

Excellent Integrated System Limited

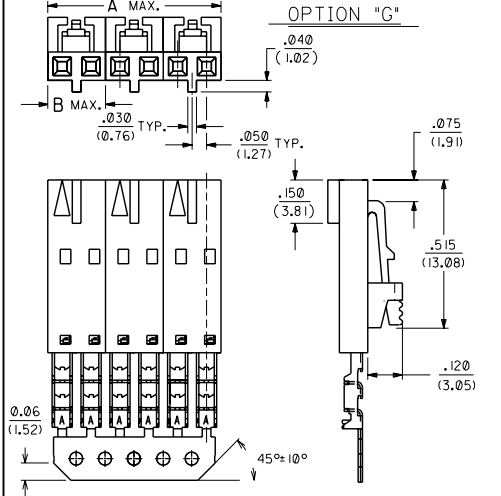
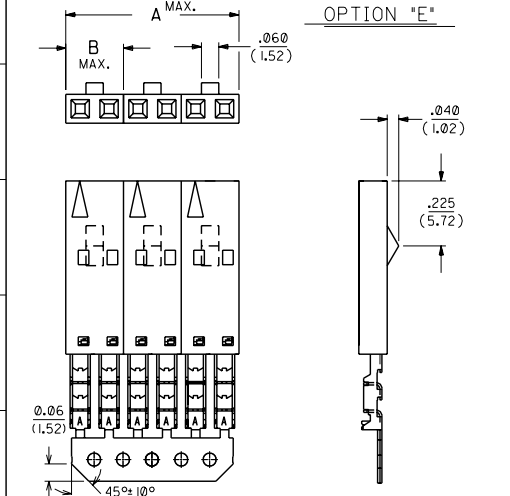
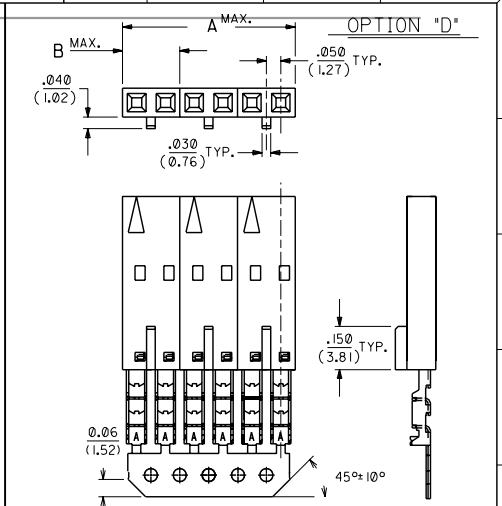
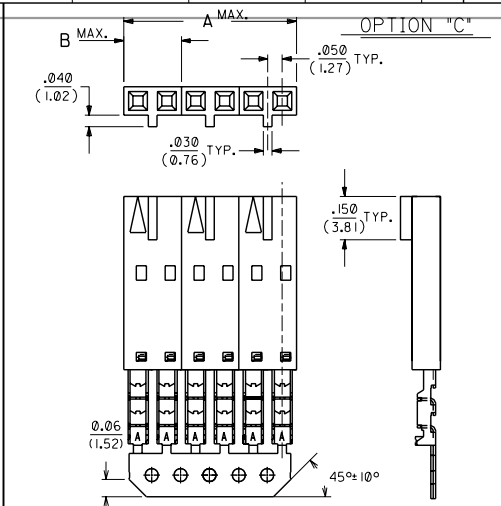
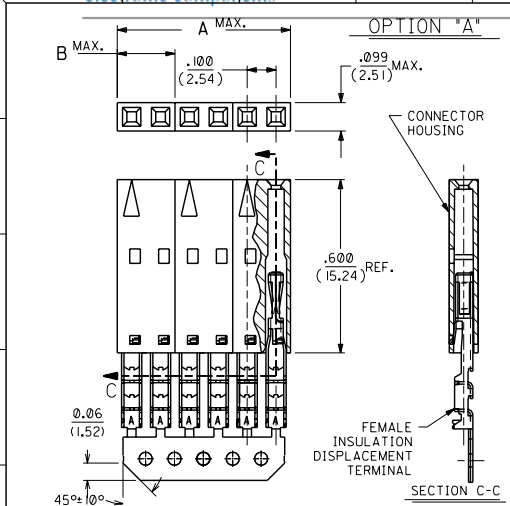
Stocking Distributor

Click to view price, real time Inventory, Delivery & Lifecycle Information:

[Molex Connector Corporation](#)
[0014625022](#)

For any questions, you can email us directly:
sales@integrated-circuit.com

13 12 11 10 9 8 7 6 5 4 3 2 1



NOTES:

- TO BE USED WITH #22-#28 AWG STRANDED WIRE WITH (.135)/.053 DIA. MAX. INSULATION.
- STANDARD PACKAGING FOR GROUPED HOUSING ASSEMBLIES PER PK-70873-0215.
- TERMINALS ARE SHOWN PRE-LOADED INTO HOUSING AND LOCKED INTO THE FIRST ROW OF WINDOWS.
- ALL DIMENSIONS ARE REFERENCE ONLY.
- SEE DWG. SD-70066-**** FOR OPTIONAL HOUSING DETAILS.
- REFER TO PRODUCT SPECIFICATION PS-70400.
- FOR ACCOUNTING PURPOSES ONLY, ONE EDP ORDER NUMBER REPRESENTS ONLY ONE HOUSING OF ANY GIVEN CHAINED COMBINATION OF CKT. SIZES.

PLATING CODES:

164 - .000150 MIN. TIN/LEAD PLATE OVER NICKEL PLATE.

571 - .000015 MIN. GOLD PLATE IN SELECTED AREA, .000075 MIN. TIN/LEAD PLATE IN SELECTED AREA, OVER NICKEL PLATE OVERALL.

574 - .000030 MIN. GOLD PLATE IN SELECTED AREA, .000075 MIN. TIN/LEAD PLATE IN SELECTED AREA, OVER NICKEL PLATE OVERALL.

P164 - .000150 MIN. TIN/LEAD PLATE OVER MIN. NICKEL PLATE. (PRE-PLATE)

PLATING CODE (STRIPE ON CARRIER STRIP)

PLATING	COLOR
164	NONE
571	YELLOW
574	RED
P164	NONE

I.D. SLOT/WIRE GAUGE CHART

SLOT I.D.	SLOT SIZE	WIRE GAUGE
A	.015 ±.002/(0.38 ±0.05)	24 AWG - STRANDED
B	.011 ±.002/(0.28 ±0.05)	26 AWG - STRANDED
C	.0075 ±.002/(0.19 ±0.05)	28 AWG - STRANDED
D	.019 ±.002/(0.48 ±0.05)	22 AWG - STRANDED

E9	ADD -7713,7723 ECR UDT2000-1190 KMS 05/30/2000	E6	ADD CARRIER CHAMF ECN *UDT1998-0280 05/20/98 LMCGRATH
E8	SHT 4, ADD P/N-0074 UDT 2000-0605 GIZOWSKI 12-29-99	E5	ADDED PARTS ECR *U7-8423 MCFARLAN 95-10-16
E7	REL-0071, 72, 73 UDT 1999-0371 SCHAFER 11-13-9	E4	ADDED ENG* -0053 ECR* U7-0283 MCFARLAN 96-9-17
LTR.	REVISIONS	LTR.	REVISIONS

UNLESS OTHERWISE SPECIFIED TOLERANCES ARE: .125"

3 PLACE ± INCH METRIC

1 PLACE ± INCH METRIC

1 PLACE ± INCH METRIC

DRWG. BY: MCB CVD. BY: MJM

APP'D. BY: MJM SCALE: 4 : 1

REVISIONS

DATE: 11/20/89

FILE NAME: SDA-70977-****

THIS DRAWING CONTAINS INFORMATION THAT IS PROPRIETARY TO MOLEX INC. AND SHALL NOT BE USED WITHOUT WRITTEN PERMISSION.

DATE: DA

SIZE: C

REV. 4 E9, 3 E, 2 E, 1 E9, MFG. SH. REV.

13 12 11 10 9 8 7 6 5 4 3 2 1

ONE EDP NUMBER REPRESENTS ONE INDIVIDUAL HOUSING (SEE NOTE 7)

EDP. NUMBER	ENG. NUMBER	DIM. "A" (MAX.)	DIM. "B" (MAX.)	OPTION	CIRCUIT SIZE	NUMBER OF HOUSINGS IN TOTAL ASSEMBLY	HOUSING NO.	TERMINAL NO.	PLATING	WIRE SIZE
014-62-5021	A-70977-0026	.599 (15.21)	.199 (5.05)	D	2	3	70066-0106	70028-0011	571	24 AWG
014-62-5025	A-70977-0027	.599 (15.21)	.199 (5.05)	D	2	3	70066-0106	70028-0013	571	26 AWG
014-62-5029	A-70977-0028	.599 (15.21)	.199 (5.05)	D	2	3	70066-0106	70028-0015	571	28 AWG
014-62-6023	A-70977-0029	.599 (15.21)	.199 (5.05)	D	2	3	70066-0106	70028-0017	574	24 AWG
014-62-6027	A-70977-0030	.599 (15.21)	.199 (5.05)	D	2	3	70066-0106	70028-0019	574	26 AWG
014-62-7021	A-70977-0031	.599 (15.21)	.199 (5.05)	D	2	3	70066-0106	70028-0021	574	28 AWG
014-60-4020	A-70977-0032	.599 (15.21)	.199 (5.05)	G	2	3	70066-0176	70028-0005	164	24 AWG
014-60-4024	A-70977-0033	.599 (15.21)	.199 (5.05)	G	2	3	70066-0176	70028-0007	164	26 AWG
014-60-4028	A-70977-0034	.599 (15.21)	.199 (5.05)	G	2	3	70066-0176	70028-0009	164	28 AWG
014-62-5022	A-70977-0035	.599 (15.21)	.199 (5.05)	G	2	3	70066-0176	70028-0011	571	24 AWG
014-62-5026	A-70977-0036	.599 (15.21)	.199 (5.05)	G	2	3	70066-0176	70028-0013	571	26 AWG
014-62-6020	A-70977-0037	.599 (15.21)	.199 (5.05)	G	2	3	70066-0176	70028-0015	571	28 AWG
014-62-6024	A-70977-0038	.599 (15.21)	.199 (5.05)	G	2	3	70066-0176	70028-0017	574	24 AWG
014-62-6028	A-70977-0039	.599 (15.21)	.199 (5.05)	G	2	3	70066-0176	70028-0019	574	26 AWG
014-62-7022	A-70977-0040	.599 (15.21)	.199 (5.05)	G	2	3	70066-0176	70028-0021	574	28 AWG
014-60-4038	A-70977-0041	.599 (15.21)	.299 (7.59)	A	3	2	70066-0037	70028-0017	574	24 AWG
014-60-3039	A-70977-0042	.599 (15.21)	.299 (7.59)	D	3	2	70066-0107	70028-0005	164	24 AWG
014-60-4034	A-70977-0043	.599 (15.21)	.299 (7.59)	D	3	2	70066-0107	70028-0011	571	24 AWG
014-60-4030	A-70977-0044	.599 (15.21)	.299 (7.59)	G	3	2	70066-0177	70028-0005	164	24 AWG
014-60-4033	A-70977-0045	.599 (15.21)	.299 (7.59)	G	3	2	70066-0177	70028-0011	571	24 AWG
014-60-4036	A-70977-0046	.599 (15.21)	.299 (7.59)	G	3	2	70066-0177	70028-0013	571	26 AWG
014-60-4037	A-70977-0047	.599 (15.21)	.299 (7.59)	G	3	2	70066-0177	70028-0015	571	28 AWG
014-60-4103	A-70977-0048	1.499 (38.07)	.499 (12.67)	G	5	3	70066-0179	70028-0005	164	24 AWG
014-60-4104	A-70977-0049	1.499 (38.07)	.499 (12.67)	G	5	3	70066-0179	70028-0007	164	26 AWG
014-60-4113	A-70977-0050	1.499 (38.07)	.499 (12.67)	G	5	3	70066-0179	70028-0013	571	26 AWG

70977

LTR.		REVISIONS		LTR.		REVISIONS	
		E SEE SHEET 1				B SEE SHEET 1	

DIMENSIONS SHOWN IN METRIC/INCH		UNLESS OTHERWISE SPECIFIED TOLERANCES ARE AS FOLLOWS	
3 PLACE ±	---	---	---
2 PLACE ±	---	---	---
1 PLACE	---	---	---

DRG. NO.	AAB	CHKD. BY	
APP'D. BY	MJM	SCALE	1:1

TITLE		REVISE ONLY ON CAD SYSTEM	
ASSEMBLY CONNECTOR BOX 1.D			
SINGLE ROW - .100 GRID			
GROUPED HOUSINGS			
MOLEX INCORPORATED	SHEET NO.	DATE	
	3	05/13/91	
SEE CHART		DRG. NO.	SDA-70977-0000

THESE DIMENSIONS CONTAIN INFORMATION THAT IS PROPRIETARY TO MOLEX INC. AND SHALL NOT BE USED WITHOUT WRITTEN PERMISSION.