

Excellent Integrated System Limited

Stocking Distributor

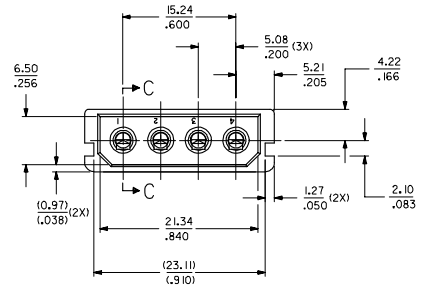
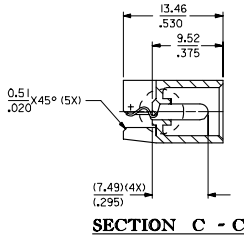
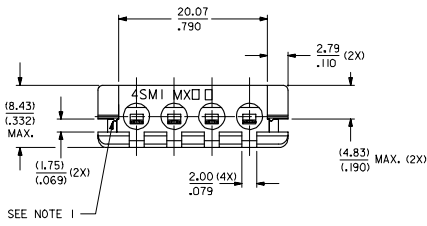
Click to view price, real time Inventory, Delivery & Lifecycle Information:

[Molex Connector Corporation](#)
[0015244455](#)

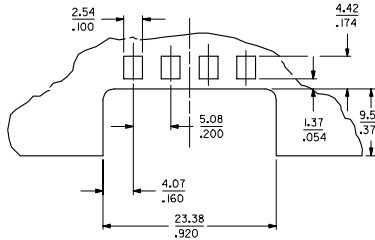
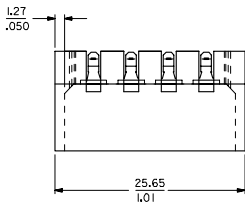
For any questions, you can email us directly:

sales@integrated-circuit.com

MAT'L NO.	ENG NO.
15-24-4455	A-8981-4SM1-LF



RECOMMENDED P.C. BOARD LAYOUT



NOTES:

- MOLDED RIBS TO PROVIDE AN INTERFERENCE FIT TO A 1.62± 0.10/(.064±.004) P.C. BOARD
- PLATING
POSTPLATE 0.00254/(.000100) MIN. TIN OVER 0.00127/(.000050) MIN. NICKEL OVERALL.
- PART INTENDED TO MATE WITH HOUSING 8981-4P2 AND TERMINAL 8980-3*.
- PRODUCT SPEC. PS-8981-4SM* APPLIES.
- MATERIAL:
HOUSING - PET, GLASS FILLED.
UL 94V-0, COLOR: BLACK
TERMINAL - PHOSPHOR BRONZE

OBS. TIN/LEAD P/N EC NO: S2006-0763 DRAWN/CHKD/APP'D D 2006/09/30 2006/09/30 2006/04/03	DESCRIPTION	QUALITY SYMBOLS	GENERAL TOLERANCES (UNLESS SPECIFIED)		DIMENSION STYLE	SCALE	DESIGN UNITS	THIRD ANGLE PROJECTION
		▽=0	mm	INCH	MM/IN	NTS	METRIC	
		▽=0	4 PLACES ± .008	± .008	DATE	DATE	TITLE	
			3 PLACES ± .010	± .010	1989/09/30	1989/09/30	POWER CONNECTOR, 4 CKTS SMT	
		2 PLACES ± 0.20	± .008	CHECKED BY	DATE			
		1 PLACE ± .010	± .010	ITAY	1989/09/30			
			ANGULAR ± 3°	APPROVED BY	DATE			
				NK	1989/09/30			
			DRAFT WHERE APPLICABLE MUST REMAIN WITHIN DIMENSIONS	MATERIAL NO.	DOCUMENT NO.			
				SEE TABLE	SDA-8981-4SM1			
				SIZE				
				A3				
				THIS DRAWING CONTAINS INFORMATION THAT IS PROPRIETARY TO MOLEX INCORPORATED AND SHOULD NOT BE USED WITHOUT WRITTEN PERMISSION				SHEET NO. 1 OF 1