

Excellent Integrated System Limited

Stocking Distributor

Click to view price, real time Inventory, Delivery & Lifecycle Information:

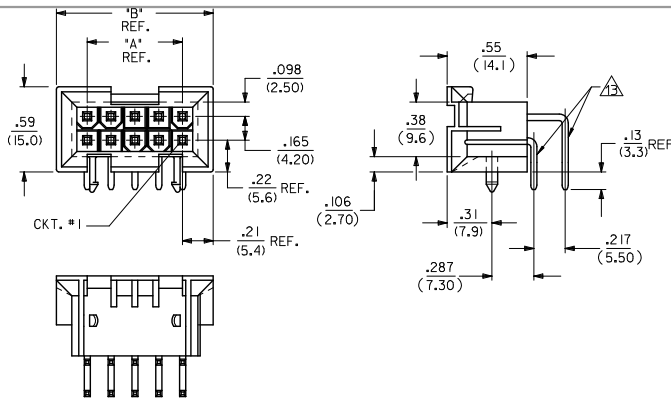
[Molex Connector Corporation](#)

[0015246183](#)

For any questions, you can email us directly:

sales@integrated-circuit.com

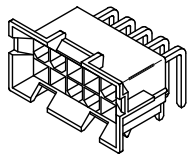
CIRCUIT SIZE	DIM. 'A'	DIM. 'B'
6	.331 (8.40)	.76 (19.2)
8	.496 (12.60)	.92 (23.4)
10	.661 (16.80)	1.09 (27.6)
12	.827 (21.00)	1.25 (31.8)
14	.992 (25.20)	1.42 (36.0)
16	1.157 (29.40)	1.58 (40.2)
18	1.323 (33.60)	1.75 (44.4)
20	1.488 (37.80)	1.91 (48.6)
22	1.654 (42.00)	2.08 (52.8)
24	1.819 (46.20)	2.24 (57.0)



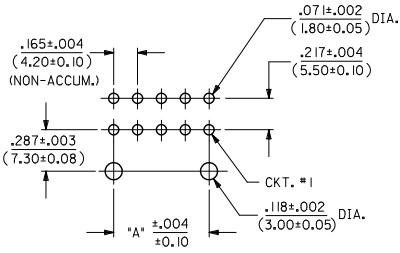
NOTES:

- 1) MATERIAL: HOUSING: 'A' = NYLON 6/6, U.L. 94V-2, COLOR: NATURAL. 'B' = NYLON 6/6, U.L. 94V-0, COLOR: NATURAL. TERMINAL: BRASS ALLOY
- 2) TERMINAL PLATING:
 - 1 = .000100/(.00254) MIN. MATTE TIN OVER .000050/(.00127) MIN. NICKEL OVERALL.
 - 5 = .000030/(.00076) MIN. SELECT GOLD AND .000100/(.00254) MIN. SELECT MATTE TIN OVER .000050/(.00127) MIN. NICKEL OVERALL.
- 3) PRODUCT SPECIFICATION: PS-5556-002
- 4) PACKAGING SPECIFICATION: PK-42404-002.
- 5) 4-24 CKT. PARTS MATE WITH MINI-FIT JR. RECEPTACLES #5557, #42385, #44516 AND #42474. 2 CKT. PART MATES WITH #42385, #44516 AND #42474 ONLY.
- 6) PART ALLOWS FOR UP TO .100/(2.54) MISALIGNMENT WITH MATING RECEPTACLE IN ANY DIRECTION. SEE MATING CONNECTOR DRAWINGS FOR SPECIFIC ALLOWANCES.
- 7) CONNECTOR ASSEMBLIES ARE NOT TO BE MATED OR UNMATED WHILE CIRCUITS ARE LIVE.
- 8) A MAXIMUM TOLERANCE OF .050/(1.27) ALLOWS FOR 2 POINTS OF ELECTRICAL CONTACT. A MAXIMUM TOLERANCE OF .020/(.51) ALLOWS FOR 4 POINTS OF CONTACT.
- 9) DISCOLORATION IN THE BANDOLIER CARRIER AREA OF THE PIN IS INHERENT TO THE PLATING PROCESS AND IS DUE TO THE MASKING EFFECT OF THE CARRIER. THIS DISCOLORATION IS IN A NON-FUNCTIONAL AREA OF THE PIN AND WILL NOT AFFECT THE PERFORMANCE OF THE HEADER ASSEMBLY.
- 10) PART IS NOT DESIGNED FOR CURRENT SHARING.
- 11) PART IS NOT INTENDED TO PROVIDE ANY ALIGNMENT OF CUSTOMER COMPONENTS OR MODULES, SUCH AS POWER SUPPLIES AND CHASSIS.
- 12) PARTS CONFORM TO CLASS 'B' REQUIREMENTS OF COSMETIC SPECIFICATION PS-45499-002.

FORMING MARKS ARE ACCEPTABLE.

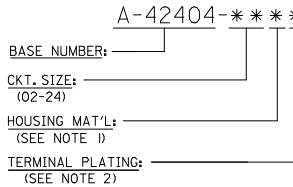


A-42404-****



RECOMMENDED HOLE LAYOUT FOR .070/(1.78) MAX. THICK P.C. BOARD VIEWED FROM COMPONENT SIDE

LEGEND:

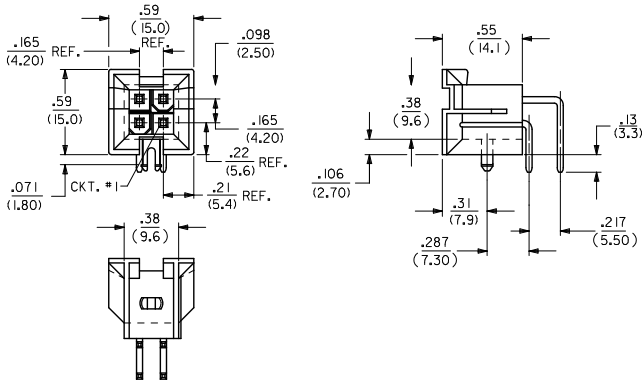


--B2, --B4	42474--21, 5556-PBGS*P	94V-0	PHOS. BRZ.	GOLD
--A2, --A4	42474--11, 5556-PBGS*P	94V-2		
--B1, --B3	42474--21, 5556-PBS*P	94V-0	PHOS. BRZ.	TIN
--A1, --A3	42474--11, 5556-PBS*P	94V-2		
--B2, --B4	42474--21, 5556-CS*P	94V-0	BRASS	GOLD
--A2, --A4	42474--11, 5556-CS*P	94V-2		
--B1, --B3	42474--21, 5556-S*P	94V-0	BRASS	TIN
--A1, --A3	42474--11, 5556-S*P	94V-2		
--B2, --B4	A-42385--D2	94V-0	PHOS. BRZ.	GOLD
--A2, --A4	A-42385--C2	94V-2		
--B1, --B3	A-42385--D1	94V-0	PHOS. BRZ.	TIN
--A1, --A3	A-42385--C1	94V-2		
--B2, --B4	A-42385--B2	94V-0	BRASS	GOLD
--A2, --A4	A-42385--A2	94V-2		
--B1, --B3	A-42385--B1	94V-0	BRASS	TIN
--A1, --A3	A-42385--A1	94V-2		

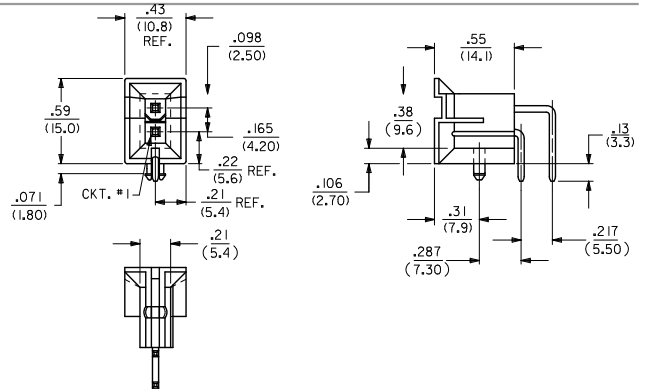
R.A. HEADER	MATING CONNECTOR	HSG. MAT'L.	TERM. MAT'L.	PLATING
A-42404				

Id. frame. C. P. AM. T
Rev. F. 2009/06/18

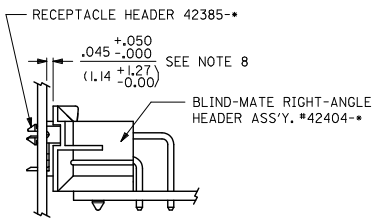
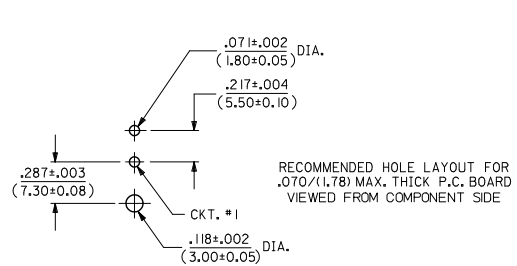
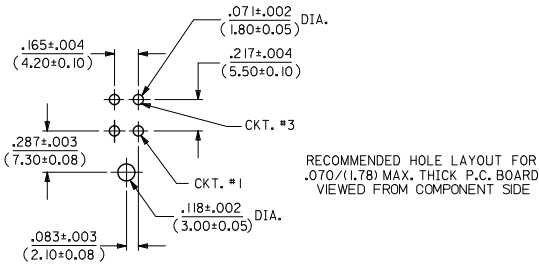
UPDATE NOTE 5	EC NO: UCP2012-2990	DRAWN BY: ZHANGJUN	CHKD: JELL	APPROVED: SMITH	DESCRIPTION	QUALITY SYMBOLS	GENERAL TOLERANCES (UNLESS SPECIFIED)		DIMENSION STYLE		SCALE	DESIGN UNITS	THIRD ANGLE PROJECTION
							mm	INCH	IN/MM	IN/MM			
T1	REV						4 PLACES ±---	±---	DRAWN BY: RJK	DATE: 2/7/89	TITLE: MINI-FIT JR. 2-24 CKT RIGHT ANGLE HEADER ASSY (BLIND MATE)	MOLEX INCORPORATED	SHEET NO. 1 OF 3
							3 PLACES ±---	±.010	CHECKED BY: RJK	DATE: 2/7/89			
							2 PLACES ±0.25	±.015	APPROVED BY: FSMITH	DATE: 2011/11/01	DOCUMENT NO. SDA-42404-****		
							1 PLACE ±0.38	±---	DRAFT WHERE APPLICABLE MUST REMAIN WITHIN DIMENSIONS				
THIS DRAWING CONTAINS INFORMATION THAT IS PROPRIETARY TO MOLEX INCORPORATED AND SHOULD NOT BE USED WITHOUT WRITTEN PERMISSION													



A-42404-04**

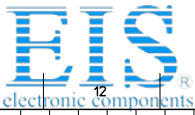


A-42404-02**



PANEL-TO-P.C.BOARD
SEE RECEPTACLE DRAWINGS FOR
ADDITIONAL MATING CONFIGURATIONS

SEE SHEET 1 EC NO: UCP2012-2990 DRAWING: 2017/03/12 CHKD: BELL APPR: SMITH 2017/05/04	QUALITY SYMBOLS □=0 ▽=0 ▽=0	GENERAL TOLERANCES (UNLESS SPECIFIED)		DIMENSION STYLE		SCALE	DESIGN UNITS	THIRD ANGLE PROJECTION	
				IN/MM		2:1	METRIC		
		4 PLACES ± --- ± ---		DRAWN BY	DATE	TITLE			
		3 PLACES ± --- ± .010		RWK	2/7/89	MINI-FIT JR. 2-24 CKT RIGHT ANGLE HEADER ASSY (BLIND MATE)			
2 PLACES ± 0.25 ± .015		CHECKED BY	DATE	MOLEX INCORPORATED SDA-42404-****					
1 PLACE ± 0.38 ± ---		RJF	2/7/89						
ANGULAR ± 1/2°		APPROVED BY	DATE	SHEET NO. 2 OF 3					
DRAFT WHERE APPLICABLE MUST REMAIN WITHIN DIMENSIONS		FSMITH	2011/11/01	MATERIAL NO.		DOCUMENT NO.			
		SEE SHEET 3		THIS DRAWING CONTAINS INFORMATION THAT IS PROPRIETARY TO MOLEX INCORPORATED AND SHOULD NOT BE USED WITHOUT WRITTEN PERMISSION					



J	I	H	G	F	E	D	C	B	A																																																																													
PLATING (NOTE 5)	CKT. HOUSING MATERIAL	ENG. NUMBER	PART NUMBER	PLATING (NOTE 2)	CKT. HOUSING MATERIAL	ENG. NUMBER	PART NUMBER	<table border="1"> <tr> <td> SEE SHEET 1 IEC NO: UCP2012-2990 DRAWING: 2017/03/12 CHKD: J.BELL APPR: S.MITH 2017/05/04 </td> <td> QUALITY SYMBOLS </td> <td> GENERAL TOLERANCES (UNLESS SPECIFIED) <table border="1"> <tr> <th></th> <th>mm</th> <th>INCH</th> </tr> <tr> <td>4 PLACES</td> <td>± 0.25</td> <td>± 0.010</td> </tr> <tr> <td>3 PLACES</td> <td>± 0.15</td> <td>± 0.005</td> </tr> <tr> <td>2 PLACES</td> <td>± 0.10</td> <td>± 0.004</td> </tr> <tr> <td>1 PLACE</td> <td>± 0.08</td> <td>± 0.003</td> </tr> </table> </td> <td> DIMENSION STYLE IN/MM </td> <td> SCALE 1:1 </td> <td> DESIGN UNITS METRIC </td> <td> THIRD ANGLE PROJECTION </td> </tr> <tr> <td> REV T1 </td> <td> DESCRIPTION MINI-FIT JR. 2-24 CKT RIGHT ANGLE HEADER ASSY (BLIND MATE) </td> <td> DRAFT WHERE APPLICABLE MUST REMAIN WITHIN DIMENSIONS </td> <td> SEE CHART SIZE C </td> <td> MATERIAL NO. SDA-42404-**** </td> <td> DOCUMENT NO. SDA-42404-**** </td> <td> SHEET NO. 3 OF 3 </td> </tr> </table>		SEE SHEET 1 IEC NO: UCP2012-2990 DRAWING: 2017/03/12 CHKD: J.BELL APPR: S.MITH 2017/05/04	QUALITY SYMBOLS 	GENERAL TOLERANCES (UNLESS SPECIFIED) <table border="1"> <tr> <th></th> <th>mm</th> <th>INCH</th> </tr> <tr> <td>4 PLACES</td> <td>± 0.25</td> <td>± 0.010</td> </tr> <tr> <td>3 PLACES</td> <td>± 0.15</td> <td>± 0.005</td> </tr> <tr> <td>2 PLACES</td> <td>± 0.10</td> <td>± 0.004</td> </tr> <tr> <td>1 PLACE</td> <td>± 0.08</td> <td>± 0.003</td> </tr> </table>		mm	INCH	4 PLACES	± 0.25	± 0.010	3 PLACES	± 0.15	± 0.005	2 PLACES	± 0.10	± 0.004	1 PLACE	± 0.08	± 0.003	DIMENSION STYLE IN/MM	SCALE 1:1	DESIGN UNITS METRIC	THIRD ANGLE PROJECTION	REV T1	DESCRIPTION MINI-FIT JR. 2-24 CKT RIGHT ANGLE HEADER ASSY (BLIND MATE)	DRAFT WHERE APPLICABLE MUST REMAIN WITHIN DIMENSIONS	SEE CHART SIZE C	MATERIAL NO. SDA-42404-****	DOCUMENT NO. SDA-42404-****	SHEET NO. 3 OF 3	NOT TOOLED A-42404-02A1 2 94V-2 MATTE TIN OVER NICKEL	15-24-6040 -04A1 4 94V-2 MATTE TIN OVER NICKEL	15-24-6060 -06A1 6 94V-2 MATTE TIN OVER NICKEL	NOT TOOLED -08A1 8 94V-2 MATTE TIN OVER NICKEL	15-24-6100 -10A1 10 94V-2 MATTE TIN OVER NICKEL	NOT TOOLED -12A1 12 94V-2 MATTE TIN OVER NICKEL	15-24-6140 -14A1 14 94V-2 MATTE TIN OVER NICKEL	NOT TOOLED -16A1 16 94V-2 MATTE TIN OVER NICKEL	15-24-6180 -18A1 18 94V-2 MATTE TIN OVER NICKEL	NOT TOOLED -20A1 20 94V-2 MATTE TIN OVER NICKEL	NOT TOOLED -22A1 22 94V-2 MATTE TIN OVER NICKEL	15-24-6240 A-42404-24A1 24 94V-2 SELECT GOLD OVER NICKEL	NOT TOOLED A-42404-02A5 02 94V-2 SELECT GOLD OVER NICKEL	15-24-9047 A-42404-04A5 04 94V-0 MATTE TIN OVER NICKEL	15-24-9067 A-42404-06A5 06 94V-0 MATTE TIN OVER NICKEL	NOT TOOLED A-42404-08A5 08 94V-0 MATTE TIN OVER NICKEL	15-24-9107 A-42404-10A5 10 94V-0 MATTE TIN OVER NICKEL	NOT TOOLED A-42404-12A5 12 94V-0 MATTE TIN OVER NICKEL	15-24-9147 A-42404-14A5 14 94V-0 MATTE TIN OVER NICKEL	NOT TOOLED A-42404-16A5 16 94V-0 MATTE TIN OVER NICKEL	15-24-9187 A-42404-18A5 18 94V-0 MATTE TIN OVER NICKEL	NOT TOOLED A-42404-20A5 20 94V-0 MATTE TIN OVER NICKEL	NOT TOOLED A-42404-22A5 22 94V-0 MATTE TIN OVER NICKEL	15-24-9247 A-42404-24A5 24 94V-0 SELECT GOLD OVER NICKEL	NOT TOOLED A-42404-02B1 2 94V-0 SELECT GOLD OVER NICKEL	15-24-9044 -04B1 4 94V-0 SELECT GOLD OVER NICKEL	15-24-9064 -06B1 6 94V-0 SELECT GOLD OVER NICKEL	NOT TOOLED -08B1 8 94V-0 SELECT GOLD OVER NICKEL	15-24-9104 -10B1 10 94V-0 SELECT GOLD OVER NICKEL	NOT TOOLED -12B1 12 94V-0 SELECT GOLD OVER NICKEL	15-24-9144 -14B1 14 94V-0 SELECT GOLD OVER NICKEL	15-24-9164 -16B1 16 94V-0 SELECT GOLD OVER NICKEL	15-24-9184 -18B1 18 94V-0 SELECT GOLD OVER NICKEL	NOT TOOLED -20B1 20 94V-0 SELECT GOLD OVER NICKEL	NOT TOOLED -22B1 22 94V-0 SELECT GOLD OVER NICKEL	15-24-9244 A-42404-24B1 24 94V-0 SELECT GOLD OVER NICKEL	NOT TOOLED A-42404-02B5 02 94V-0 SELECT GOLD OVER NICKEL	15-24-6043 A-42404-04B5 04 94V-0 SELECT GOLD OVER NICKEL	15-24-6063 A-42404-06B5 06 94V-0 SELECT GOLD OVER NICKEL	NOT TOOLED A-42404-08B5 08 94V-0 SELECT GOLD OVER NICKEL	15-24-6103 A-42404-10B5 10 94V-0 SELECT GOLD OVER NICKEL	NOT TOOLED A-42404-12B5 12 94V-0 SELECT GOLD OVER NICKEL	15-24-6143 A-42404-14B5 14 94V-0 SELECT GOLD OVER NICKEL	15-24-6163 A-42404-16B5 16 94V-0 SELECT GOLD OVER NICKEL	15-24-6183 A-42404-18B5 18 94V-0 SELECT GOLD OVER NICKEL	NOT TOOLED A-42404-20B5 20 94V-0 SELECT GOLD OVER NICKEL	NOT TOOLED A-42404-22B5 22 94V-0 SELECT GOLD OVER NICKEL	15-24-6243 A-42404-24B5 24 94V-0 SELECT GOLD OVER NICKEL
SEE SHEET 1 IEC NO: UCP2012-2990 DRAWING: 2017/03/12 CHKD: J.BELL APPR: S.MITH 2017/05/04	QUALITY SYMBOLS 	GENERAL TOLERANCES (UNLESS SPECIFIED) <table border="1"> <tr> <th></th> <th>mm</th> <th>INCH</th> </tr> <tr> <td>4 PLACES</td> <td>± 0.25</td> <td>± 0.010</td> </tr> <tr> <td>3 PLACES</td> <td>± 0.15</td> <td>± 0.005</td> </tr> <tr> <td>2 PLACES</td> <td>± 0.10</td> <td>± 0.004</td> </tr> <tr> <td>1 PLACE</td> <td>± 0.08</td> <td>± 0.003</td> </tr> </table>		mm	INCH	4 PLACES	± 0.25			± 0.010	3 PLACES	± 0.15	± 0.005	2 PLACES	± 0.10	± 0.004	1 PLACE	± 0.08	± 0.003	DIMENSION STYLE IN/MM	SCALE 1:1	DESIGN UNITS METRIC	THIRD ANGLE PROJECTION																																																															
	mm	INCH																																																																																				
4 PLACES	± 0.25	± 0.010																																																																																				
3 PLACES	± 0.15	± 0.005																																																																																				
2 PLACES	± 0.10	± 0.004																																																																																				
1 PLACE	± 0.08	± 0.003																																																																																				
REV T1	DESCRIPTION MINI-FIT JR. 2-24 CKT RIGHT ANGLE HEADER ASSY (BLIND MATE)	DRAFT WHERE APPLICABLE MUST REMAIN WITHIN DIMENSIONS	SEE CHART SIZE C	MATERIAL NO. SDA-42404-****	DOCUMENT NO. SDA-42404-****	SHEET NO. 3 OF 3																																																																																