

## Excellent Integrated System Limited

Stocking Distributor

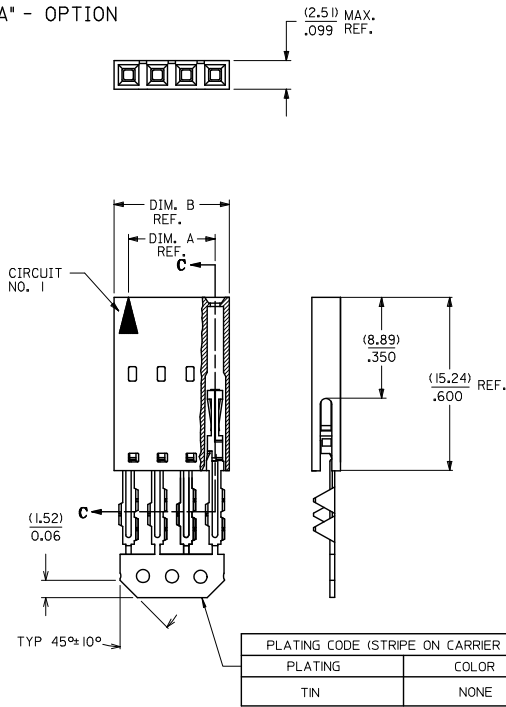
Click to view price, real time Inventory, Delivery & Lifecycle Information:

[Molex Connector Corporation](#)  
[0015388228](#)

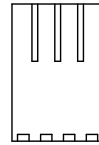
For any questions, you can email us directly:

[sales@integrated-circuit.com](mailto:sales@integrated-circuit.com)

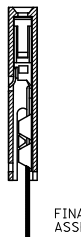
"A" - OPTION



CORE-OUT FOR HOUSING  
OPTION "A"  
CKT. SIZES 2-25  
(FOR CONTROL OF BOW)



SECTION C-C



PRE-LOAD ASSEMBLY

FINAL ASSEMBLY

FLAT FLEX CABLE (F.F.C.)  
(SEE NOTE 2.)

CKT. SIZE	EDP. NO.	ENG. NO.	A	B
2	015-38-8028	70430-0001	(2.54) 100	(5.05) 199
3	015-38-8038	70430-0002	(5.08) 200	(7.59) 299
4	015-38-8048	70430-0003	(7.62) 300	(10.13) 399
5	015-38-8058	70430-0004	(10.16) 400	(12.67) 499
6	015-38-8068	70430-0005	(12.70) 500	(15.21) 599
7	015-38-8078	70430-0006	(15.24) 600	(17.75) 699
8	015-38-8088	70430-0007	(17.78) 700	(20.29) 799
9	015-38-8098	70430-0008	(20.32) 800	(22.83) 899
10	015-38-8108	70430-0009	(22.86) 900	(25.37) 999
11	015-38-8118	70430-0010	(25.40) 1,000	(27.91) 1,099
12	015-38-8128	70430-0011	(27.94) 1,100	(30.45) 1,199
13	015-38-8138	70430-0012	(30.48) 1,200	(32.99) 1,299
14	015-38-8148	70430-0013	(33.02) 1,300	(35.53) 1,399
15	015-38-8158	70430-0014	(35.56) 1,400	(38.07) 1,499
16	015-38-8168	70430-0015	(38.10) 1,500	(40.61) 1,599
17	015-38-8178	70430-0016	(40.64) 1,600	(43.15) 1,699
18	015-38-8188	70430-0017	(43.18) 1,700	(45.69) 1,799
19	015-38-8198	70430-0018	(45.72) 1,800	(48.23) 1,899
20	015-38-8208	70430-0019	(48.26) 1,900	(50.77) 1,999
21	015-38-8218	70430-0020	(50.80) 2,000	(53.31) 2,099
22	015-38-8228	70430-0021	(53.34) 2,100	(55.85) 2,199
23	015-38-8238	70430-0022	(55.88) 2,200	(58.39) 2,299
24	015-38-8248	70430-0023	(58.42) 2,300	(60.93) 2,399
25	015-38-8258	70430-0024	(60.96) 2,400	(63.47) 2,499

- HOUSING MATERIAL: GLASS FILLED POLYESTER, UL94V-0, COLOR: BLACK.  
TERMINAL MATERIAL: PHOSPHOR BRONZE.  
PLATING TIN- 3.81 MICROMETERS/150 MICROINCHES MINIMUM TIN OVER  
1.27 MICROMETERS/50 MICROINCHES MINIMUM NICKEL PLATE.
- PRE LOADED ASSEMBLY TO BE USED WITH (0.30)/.012 MAX. THICK FLAT CABLE  
WITH (1.57)/.062 WIDE COPPER CONDUCTORS ON (2.54)/.100 CENTERS OR,  
(0.13)/.005-(0.28)/.011 THICK MYLAR WITH (1.02)/.040 - (1.65)/.065 WIDE  
SILVER INK CONDUCTORS ON (2.54)/.100 CENTERS.
- PRODUCT SPECIFICATION: PS-70430.
- STANDARD PACKING PER PK70873-0001 SHALL BE USED.
- SEE CHART FOR CIRCUIT SIZES, "A" AND "B" DIMENSIONS.
- TWO (2) CIRCUIT ASSEMBLIES SUPPLIED AS GROUPED PAIRS.
- PART MATES WITH (0.64)/.025 SQ. PINS, (8.13)/.320 TO (5.08)/.200  
LONG ON (2.54)/.100 CENTERS.
- PARTS CONFORM TO CLASS B COSMETIC SPECIFICATION PS-45499-002.

THE PRIMARY CARTON WITH A LABEL STATING  
"ELV AND RoHS COMPLIANT" IS LEAD FREE.  
CARTONS WITHOUT THIS LABEL MAY CONTAIN LEAD.

STANDARDIZE EC NO: UCP2013-2/52 DRAWN BY: PIPPLE 2012/12/14 CHKD BY: MORGAN 2012/12/14 APPR: MILLER 2013/01/31	QUALITY SYMBOLS ▽=0 ▽=0 ▽=0	GENERAL TOLERANCES (UNLESS SPECIFIED)		DIMENSION STYLE		SCALE	DESIGN UNITS	THIRD ANGLE PROJECTION
		mm	INCH	MM/IN	DATE	INCH	INCH	PROJECTION
		4 PLACES ± .005	± .005	RAS	1986/07/21			
		3 PLACES ± .010	± .010	CHECKED BY	DATE			
		2 PLACES ± 0.25	± .015	MJM	1986/07/21			
		1 PLACE ± 0.38	± .015	APPROVED BY	DATE			
		0 PLACE ± .005	± .015	MILLER	2013/01/31			
		ANGULAR ± 1/2°		MATERIAL NO.	DOCUMENT NO.			
		DRAFT WHERE APPLICABLE MUST REMAIN WITHIN DIMENSIONS		SEE TABLE	SDA-70430-0001-0024			
				SIZE C	THIS DRAWING CONTAINS INFORMATION THAT IS PROPRIETARY TO MOLEX INCORPORATED AND SHOULD NOT BE USED WITHOUT WRITTEN PERMISSION			SHEET NO. 1 OF 1