



**Distributor of Molex Connector Corporation: Excellent Integrated System Limited**  
Datasheet of 0015453410 - Connector Receptacle 10 Position 0.100" (2.54mm) Tin Surface  
Mount

Contact us: [sales@integrated-circuit.com](mailto:sales@integrated-circuit.com) Website: [www.integrated-circuit.com](http://www.integrated-circuit.com)

---

## **Excellent Integrated System Limited**

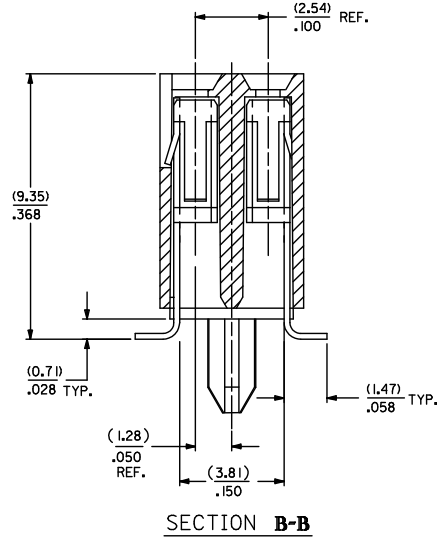
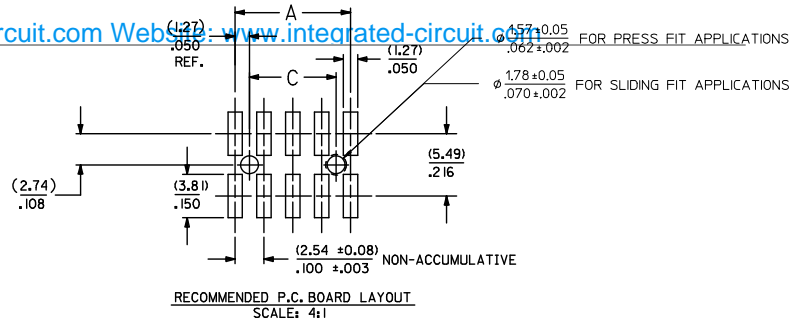
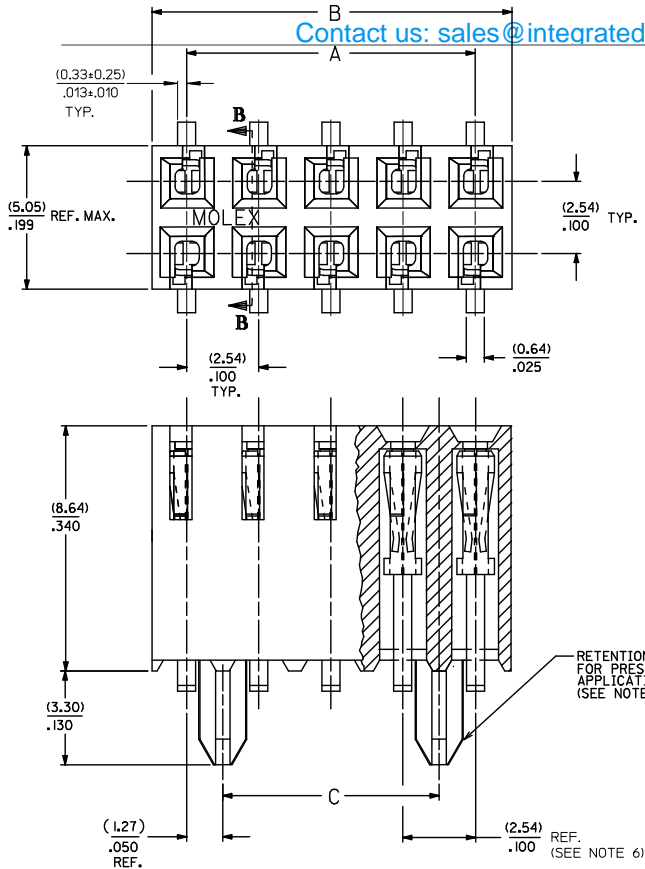
Stocking Distributor

Click to view price, real time Inventory, Delivery & Lifecycle Information:

[Molex Connector Corporation](#)  
[0015453410](#)

For any questions, you can email us directly:  
[sales@integrated-circuit.com](mailto:sales@integrated-circuit.com)

Contact us: sales@integrated-circuit.com Website: www.integrated-circuit.com



- NOTES:
- 1 - HOUSING MATERIAL: GLASS FILLED LIQUID CRYSTAL POLYMER; UL94-V0; COLOR: BLACK.
  - 2 - TERMINAL MATERIAL: PHOSPHOR BRONZE.
  - 3 - SEE SHEET 2 FOR CIRCUIT SIZES AND OVERALL DIMENSIONS.
  - 4 - SEE PRODUCT SPECIFICATION PS-71395 FOR PERFORMANCE CRITERIA.
  - 5 - STANDARD PACKAGING PER PK70873-0662 (TRAY PACK).
  - 6 - THE DESIGN OF THIS CONNECTOR ALLOWS THE TERMINAL SMT TAIL TO FLOAT (MOVE). BECAUSE OF THIS, THE (2.54)/.100 DIMENSION SHALL BE FOR REFERENCE ONLY.

- VERSION WITH PCB RETENTION PEGS -

ADD SLIDING FIT DIM. EC NO: UCP2019-5567 DRAWN BY: DMORGAN 2013/07/23 CHECKED BY: CHKOBCAIN 2013/07/23 APPROVED BY: APPRSMILLER 2016/03/17	QUALITY SYMBOLS ▽=0 ▽=0 ▽=0	GENERAL TOLERANCES (UNLESS SPECIFIED)		DIMENSION STYLE		SCALE	DESIGN UNITS	THIRD ANGLE PROJECTION	
		mm	INCH	MM/IN		10:1	INCH	☉	
		4 PLACES ±	---	DRAWN BY	DATE	TITLE			
		3 PLACES ±	±.010	DMORGAN	2013/07/23	CONNECTOR DUAL ROW VERTICAL SURFACE MOUNT TOP ENTRY ON .100 GRID			
		2 PLACES ±	±0.25 ±.014	CHECKED BY	DATE	molex			
		1 PLACE ±	±0.35 ±---	RB	12/03/1985				SDA-71395-0***
		0 PLACE ±	±---	APPROVED BY	DATE	SHEET NO.			
				SMILLER	2016/03/17	1 OF 2			
		ANGULAR ±1/2°		MATERIAL NO.	DOCUMENT NO.	THIS DRAWING CONTAINS INFORMATION THAT IS PROPRIETARY TO MOLEX INCORPORATED AND SHOULD NOT BE USED WITHOUT WRITTEN PERMISSION			
		DRAFT WHERE APPLICABLE MUST REMAIN WITHIN DIMENSIONS		SIZE	SEE TABLE				

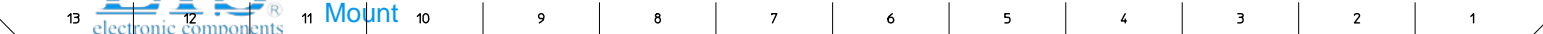
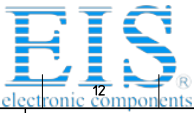


Table with columns: NO. OF CKTS., TIN PLATING, 15 GOLD PLATING, 30 GOLD PLATING. Includes sub-columns for E.D.P. NO., ENG. NO., and STANDARD PACKAGING. Rows 1-40 list various part numbers and dimensions.

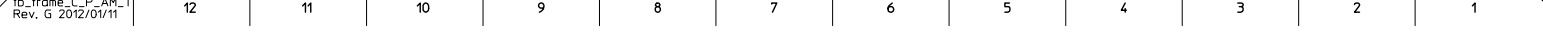
Contact: sales@integrated-circuit.com Website: www.integrated-circuit.com

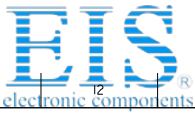
PLATING:
TIN (3.75 MICROMETER)/150 MICROINCH MINIMUM TIN OVER (.125 MICROMETER)/50 MICROINCH MINIMUM NICKEL OVERALL.
15 GOLD (0.37 MICROMETER)/15 MICROINCH MINIMUM SELECTIVE GOLD IN THE CONTACT AREA; (1.88 MICROMETER)/75 MICROINCH MINIMUM SELECTIVE TIN IN THE PC TAIL AREA OVER (.125 MICROMETER)/50 MICROINCH MINIMUM NICKEL OVERALL.
30 GOLD (0.75 MICROMETER)/30 MICROINCH MINIMUM SELECTIVE GOLD IN THE CONTACT AREA; (1.88 MICROMETER)/75 MICROINCH MINIMUM SELECTIVE TIN IN THE PC TAIL AREA OVER (.125 MICROMETER)/50 MICROINCH MINIMUM NICKEL OVERALL.

\*THE PRIMARY SHIPPING CARTON WILL BE LABELED \*COMPLIANT TO RoHS DIRECTIVE 2002/95/EC AND ELV ANNEX II OF DIRECTIVE 2000/53/EC. CARTONS WITHOUT THIS LABEL MAY CONTAIN PRODUCT WITH LEAD.

- VERSION WITH PCB RETENTION PEGS -

Engineering drawing block containing: SEE SHEET 1, QUALITY SYMBOLS, GENERAL TOLERANCES (UNLESS SPECIFIED), DIMENSION STYLE MM/IN, SCALE 1:1, DESIGN UNITS INCH, THIRD ANGLE PROJECTION, DRAWN BY DMORGAN DATE 2013/07/23, CHECKED BY RB DATE 12/03/1985, APPROVED BY SMILLER DATE 2016/03/17, MATERIAL NO., DOCUMENT NO., SHEET NO. 2 OF 2, DRAFT WHERE APPLICABLE MUST REMAIN WITHIN DIMENSIONS, SEE TABLE, SDA-71395-0\*\*\*, THIS DRAWING CONTAINS INFORMATION THAT IS PROPRIETARY TO MOLEX INCORPORATED AND SHOULD NOT BE USED WITHOUT WRITTEN PERMISSION.





Distributor of Molex Connector Corporation: Excellent Integrated System Limited

Datasheet of 0015453410 - Connector Receptacle 10 Position 0.100" (2.54mm) Tin Surface Mount

Mount

Contact us: sales@integrated-circuit.com Website: www.integrated-circuit.com

Main table with columns: NO. OF KCTS., TIN PLATING (E.D.P. NO., ENG. NO., STANDARD PACKAGING), 15 GOLD PLATING (E.D.P. NO., ENG. NO., STANDARD PACKAGING), 30 GOLD PLATING (E.D.P. NO., ENG. NO., STANDARD PACKAGING), DIM. "A" INCH/MM, DIM. "B" INCH/MM, DIM. "C" INCH/MM. Rows 4-40.

PLATING:
TIN (3.75 MICROMETER)/50 MICROINCH MINIMUM TIN OVER (1.25 MICROMETER)/50 MICROINCH MINIMUM NICKEL OVERALL.
15 GOLD (0.37 MICROMETER)/15 MICROINCH MINIMUM SELECTIVE GOLD IN THE CONTACT AREA; (1.88 MICROMETER)/75 MICROINCH MINIMUM SELECTIVE TIN IN THE PC TAIL AREA OVER (1.25 MICROMETER)/50 MICROINCH MINIMUM NICKEL OVERALL.
30 GOLD (0.75 MICROMETER)/30 MICROINCH MINIMUM SELECTIVE GOLD IN THE CONTACT AREA; (1.88 MICROMETER)/75 MICROINCH MINIMUM SELECTIVE TIN IN THE PC TAIL AREA OVER (1.25 MICROMETER)/50 MICROINCH MINIMUM NICKEL OVERALL.

\*THE PRIMARY SHIPPING CARTON WILL BE LABELED "COMPLIANT TO RoHS DIRECTIVE 2002/95/EC AND ELV ANNEX II OF DIRECTIVE 2000/53/EC". CARTONS WITHOUT THIS LABEL MAY CONTAIN PRODUCT WITH LEAD.

- VERSION WITH PCB RETENTION PEGS -

Technical drawing area including revision table, dimensions (INCH/METRIC), and title block with connector details: DUAL ROW VERTICAL SURFACE MOUNT TOP ENTRY ON .100 GRID. Includes Molex logo and sheet number 2 of 2.

Bottom row of the main table, columns 13 to 1.