

Excellent Integrated System Limited

Stocking Distributor

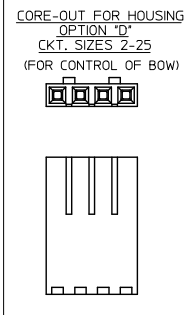
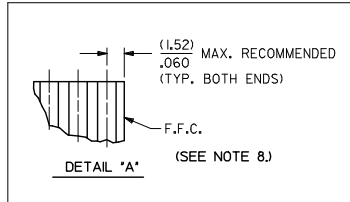
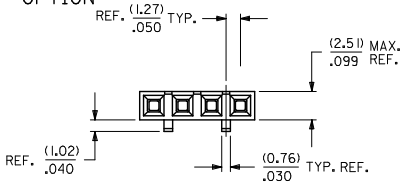
Click to view price, real time Inventory, Delivery & Lifecycle Information:

[Molex Connector Corporation](#)
[0015474022](#)

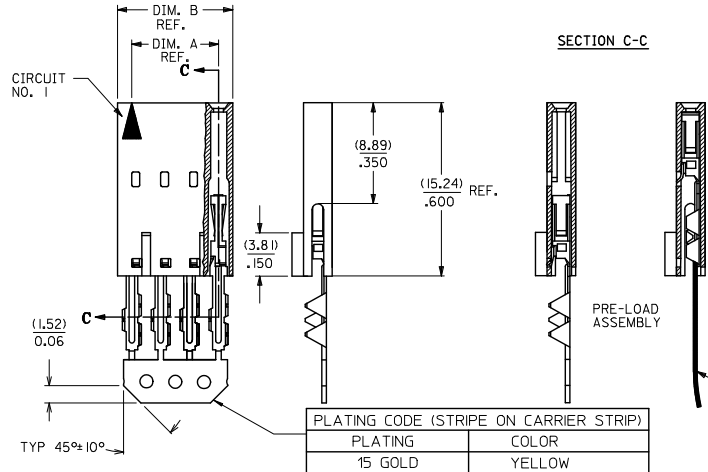
For any questions, you can email us directly:

sales@integrated-circuit.com

"D" - OPTION



| CKT. SIZE | EDP. NO. | ENG. NO. | A | B |
|-----------|-------------|------------|---------------|---------------|
| 2 | 015-47-4022 | 70430-0246 | (2.54) .100 | (5.05) .199 |
| 3 | 015-47-4032 | 70430-0247 | (5.08) .200 | (7.59) .299 |
| 4 | 015-47-4042 | 70430-0248 | (7.62) .300 | (10.13) .399 |
| 5 | 015-47-4052 | 70430-0249 | (10.16) .400 | (12.67) .499 |
| 6 | 015-47-4062 | 70430-0250 | (12.70) .500 | (15.21) .599 |
| 7 | 015-47-4072 | 70430-0251 | (15.24) .600 | (17.75) .699 |
| 8 | 015-47-4082 | 70430-0252 | (17.78) .700 | (20.29) .799 |
| 9 | 015-47-4092 | 70430-0253 | (20.32) .800 | (22.83) .899 |
| 10 | 015-47-4102 | 70430-0254 | (22.86) .900 | (25.37) .999 |
| 11 | 015-47-4112 | 70430-0255 | (25.40) 1.000 | (27.91) 1.099 |
| 12 | 015-47-4122 | 70430-0256 | (27.94) 1.100 | (30.45) 1.199 |
| 13 | 015-47-4132 | 70430-0257 | (30.48) 1.200 | (32.99) 1.299 |
| 14 | 015-47-4142 | 70430-0258 | (33.02) 1.300 | (35.53) 1.399 |
| 15 | 015-47-4152 | 70430-0259 | (35.56) 1.400 | (38.07) 1.499 |
| 16 | 015-47-4162 | 70430-0260 | (38.10) 1.500 | (40.61) 1.599 |
| 17 | 015-47-4172 | 70430-0261 | (40.64) 1.600 | (43.15) 1.699 |
| 18 | 015-47-4182 | 70430-0262 | (43.18) 1.700 | (45.69) 1.799 |
| 19 | 015-47-4192 | 70430-0263 | (45.72) 1.800 | (48.23) 1.899 |
| 20 | 015-47-4202 | 70430-0264 | (48.26) 1.900 | (50.77) 1.999 |
| 21 | 015-47-4212 | 70430-0265 | (50.80) 2.000 | (53.31) 2.099 |
| 22 | 015-47-4222 | 70430-0266 | (53.34) 2.100 | (55.85) 2.199 |
| 23 | 015-47-4232 | 70430-0267 | (55.88) 2.200 | (58.39) 2.299 |
| 24 | 015-47-4242 | 70430-0268 | (58.42) 2.300 | (60.93) 2.399 |
| 25 | 015-47-4252 | 70430-0269 | (60.96) 2.400 | (63.47) 2.499 |



| PLATING CODE (STRIPE ON CARRIER STRIP) | |
|--|--------|
| PLATING | COLOR |
| 15 GOLD | YELLOW |

- HOUSING MATERIAL: GLASS FILLED POLYESTER, UL94V-0, COLOR: BLACK.
TERMINAL MATERIAL: PHOSPHOR BRONZE.
PLATING 15 GOLD - 0.38 MICROMETERS/15 MICROINCHES MINIMUM GOLD PLATE IN SELECT AREA
1.90 MICROMETERS/75 MICROINCHES MINIMUM TIN PLATE IN SELECT AREA
1.27 MICROMETERS/50 MICROINCHES MINIMUM NICKEL PLATE OVERALL.
- PRE LOADED ASSEMBLY TO BE USED WITH (0.30)/.012 MAX. THICK FLAT CABLE WITH (1.57)/.062 WIDE COPPER CONDUCTORS ON (2.54)/.100 CENTERS OR, (0.13)/.005-(0.28)/.011 THICK MYLAR WITH (1.02)/.040 - (1.65)/.065 WIDE SILVER INK CONDUCTORS ON (2.54)/.100 CENTERS.
- PRODUCT SPECIFICATION: PS-70430.
- STANDARD PACKING PER PK70873-0001 SHALL BE USED.
- SEE CHART FOR CIRCUIT SIZES, "A" AND "B" DIMENSIONS.
- TWO (2) CIRCUIT ASSEMBLIES SUPPLIED AS GROUPED PAIRS.
- PART MATES WITH (0.64)/.025 SQ. PINS, (8.13)/.320 TO (5.08)/.200 LONG ON (2.54)/.100 CENTERS.
- RECOMMENDED F.F.C. CONFIGURATION FOR OPTION "D" ONLY: WHEN USED WITH INTERM CLIPS, (SEE DATEAIL A).
- PARTS CONFORM TO CLASS B COSMETIC SPECIFICATION PS-45499-00

THE PRIMARY CARTON WITH A LABEL STATING "ELV AND RoHS COMPLIANT" IS LEAD FREE. CARTONS WITHOUT THIS LABEL MAY CONTAIN LEAD.

| | | | | | | | | | |
|---|--------------------------------------|---------------------------------------|--|--|--|------------------|--------------|---|--|
| STANDARDIZE EC NO: UCP2015-2452 2017/12/18 DRAWN BY: CHKBDJORGAN 2017/12/18 APPROVED BY: SMILLER 2013/01/31 | QUALITY SYMBOLS ▽=0 ▽=0 ▽=0 | GENERAL TOLERANCES (UNLESS SPECIFIED) | | DIMENSION STYLE | | SCALE | DESIGN UNITS | THIRD ANGLE PROJECTION | |
| | | | | MM/IN | | | INCH | | |
| | | 4 PLACES ± --- ± --- | | DRAWN BY: RAS | | DATE: 1986/07/21 | | ASSEMBLY, CONNECTOR FFC FEMALE SINGLE ROW (2.54)/.100 GRID molex | |
| | | 3 PLACES ± --- ± 0.10 | | CHECKED BY: MJM | | DATE: 1986/07/21 | | | |
| 2 PLACES ± 0.25 ± 0.15 | | APPROVED BY: SMILLER | | DATE: 2013/01/31 | | | | | |
| 1 PLACE ± 0.38 ± --- | | MATERIAL NO. SDA-70430-0246-0269 | | DOCUMENT NO. 1 OF 1 | | | | | |
| 0 PLACE ± --- ± --- | | ANGULAR ±1/2° | | DRAFT WHERE APPLICABLE MUST REMAIN WITHIN DIMENSIONS | | SEE TABLE | | THIS DRAWING CONTAINS INFORMATION THAT IS PROPRIETARY TO MOLEX INCORPORATED AND SHOULD NOT BE USED WITHOUT WRITTEN PERMISSION | |