

## Excellent Integrated System Limited

Stocking Distributor

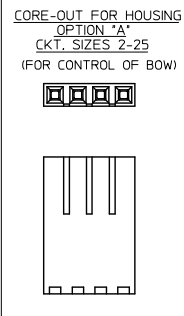
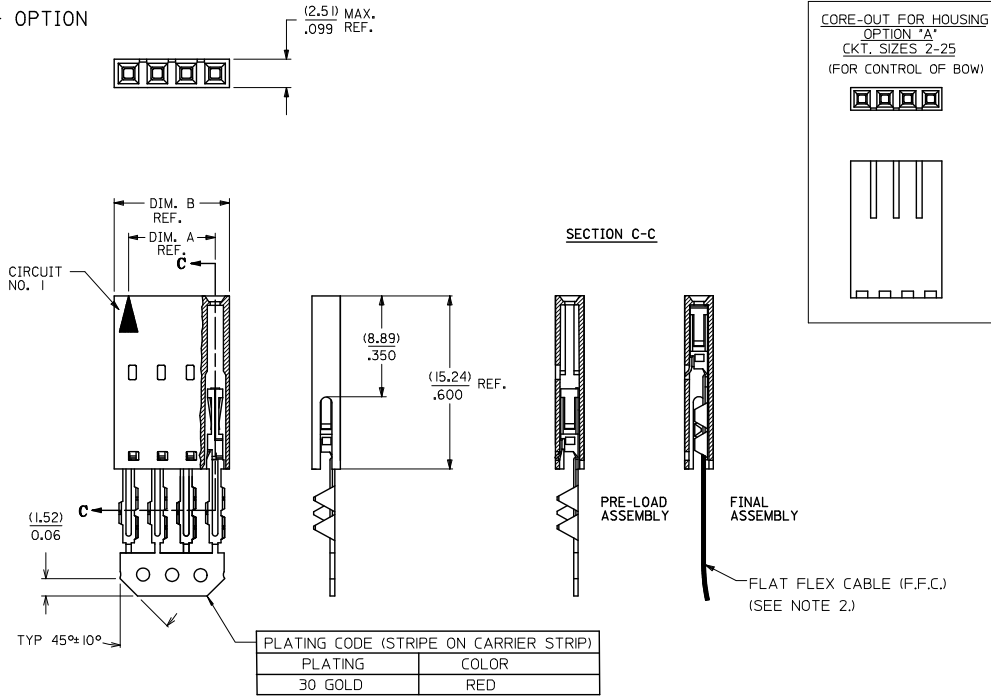
Click to view price, real time Inventory, Delivery & Lifecycle Information:

[Molex Connector Corporation](#)  
[0015474114](#)

For any questions, you can email us directly:

[sales@integrated-circuit.com](mailto:sales@integrated-circuit.com)

"A" - OPTION



CKT. SIZE	EDP. NO.	ENG. NO.	A	B
2	015-47-4024	70430-0351	(2.54) 100	(5.05) 199
3	015-47-4034	70430-0352	(5.08) 200	(7.59) 299
4	015-47-4044	70430-0353	(7.62) 300	(10.13) 399
5	015-47-4054	70430-0354	(10.16) 400	(12.67) 499
6	015-47-4064	70430-0355	(12.70) 500	(15.21) 599
7	015-47-4074	70430-0356	(15.24) 600	(17.75) 699
8	015-47-4084	70430-0357	(17.78) 700	(20.29) 799
9	015-47-4094	70430-0358	(20.32) 800	(22.83) 899
10	015-47-4104	70430-0359	(22.86) 900	(25.37) 999
11	015-47-4114	70430-0360	(25.40) 1,000	(27.91) 1,099
12	015-47-4124	70430-0361	(27.94) 1,100	(30.45) 1,199
13	015-47-4134	70430-0362	(30.48) 1,200	(32.99) 1,299
14	015-47-4144	70430-0363	(33.02) 1,300	(35.53) 1,399
15	015-47-4154	70430-0364	(35.56) 1,400	(38.07) 1,499
16	015-47-4164	70430-0365	(38.10) 1,500	(40.61) 1,599
17	015-47-4174	70430-0366	(40.64) 1,600	(43.15) 1,699
18	015-47-4184	70430-0367	(43.18) 1,700	(45.69) 1,799
19	015-47-4194	70430-0368	(45.72) 1,800	(48.23) 1,899
20	015-47-4204	70430-0369	(48.26) 1,900	(50.77) 1,999
21	015-47-4214	70430-0370	(50.80) 2,000	(53.31) 2,099
22	015-47-4224	70430-0371	(53.34) 2,100	(55.85) 2,199
23	015-47-4234	70430-0372	(55.88) 2,200	(58.39) 2,299
24	015-47-4244	70430-0373	(58.42) 2,300	(60.93) 2,399
25	015-47-4254	70430-0374	(60.96) 2,400	(63.47) 2,499

- HOUSING MATERIAL: GLASS FILLED POLYESTER, UL94V-0, COLOR: BLACK.  
TERMINAL MATERIAL: PHOSPHOR BRONZE.  
PLATING 30 GOLD -0.76 MICROMETERS/30 MICROINCHES MINIMUM GOLD PLATE IN SELECT AREA  
1.90 MICROMETERS/75 MICROINCHES MINIMUM TIN PLATE IN SELECT AREA  
1.27 MICROMETERS/50 MICROINCHES MINIMUM NICKEL PLATE OVERALL.
- PRE LOADED ASSEMBLY TO BE USED WITH (0.30)/.012 MAX. THICK FLAT CABLE WITH (1.57)/.062 WIDE COPPER CONDUCTORS ON (2.54)/.100 CENTERS OR, (0.13)/.005-(0.28)/.011 THICK MYLAR WITH (1.02)/.040 - (1.65)/.065 WIDE SILVER INK CONDUCTORS ON (2.54)/.100 CENTERS.
- PRODUCT SPECIFICATION: PS-70430.
- STANDARD PACKING PER PK70873-0001 SHALL BE USED.
- SEE CHART FOR CIRCUIT SIZES, "A" AND "B" DIMENSIONS.
- TWO (2) CIRCUIT ASSEMBLIES SUPPLIED AS GROUPED PAIRS.
- PART MATES WITH (0.64)/.025 SQ. PINS, (8.13)/.320 TO (5.08)/.200 LONG ON (2.54)/.100 CENTERS.
- PARTS CONFORM TO CLASS B COSMETIC SPECIFICATION PS-45499-002.

THE PRIMARY CARTON WITH A LABEL STATING "ELV AND RoHS COMPLIANT" IS LEAD FREE. CARTONS WITHOUT THIS LABEL MAY CONTAIN LEAD.

STANDARDIZE EC NO: UCP2015-2452 DRAWN BY: CHIKOJORGAN CHECKED BY: SMILLER APPROVED BY: SMILLER DATE: 2013/01/31	QUALITY SYMBOLS ▽=0 ▽=0 ▽=0	GENERAL TOLERANCES (UNLESS SPECIFIED) mm INCH 4 PLACES ± --- ± --- 3 PLACES ± --- ± .010 2 PLACES ± 0.25 ± .015 1 PLACE ± 0.38 ± --- 0 PLACE ± --- ± ---	DIMENSION STYLE MM/IN	SCALE INCH	DESIGN UNITS INCH	THIRD ANGLE PROJECTION	DRAWN BY: RAS DATE: 1986/07/21	CHECKED BY: MJM DATE: 1986/07/21	APPROVED BY: SMILLER DATE: 2013/01/31	MATERIAL NO.	DOCUMENT NO. SDA-70430-0351-0374	SHEET NO. 1 OF 1
DRAFT WHERE APPLICABLE MUST REMAIN WITHIN DIMENSIONS												
SIZE C THIS DRAWING CONTAINS INFORMATION THAT IS PROPRIETARY TO MOLEX INCORPORATED AND SHOULD NOT BE USED WITHOUT WRITTEN PERMISSION												