

Excellent Integrated System Limited

Stocking Distributor

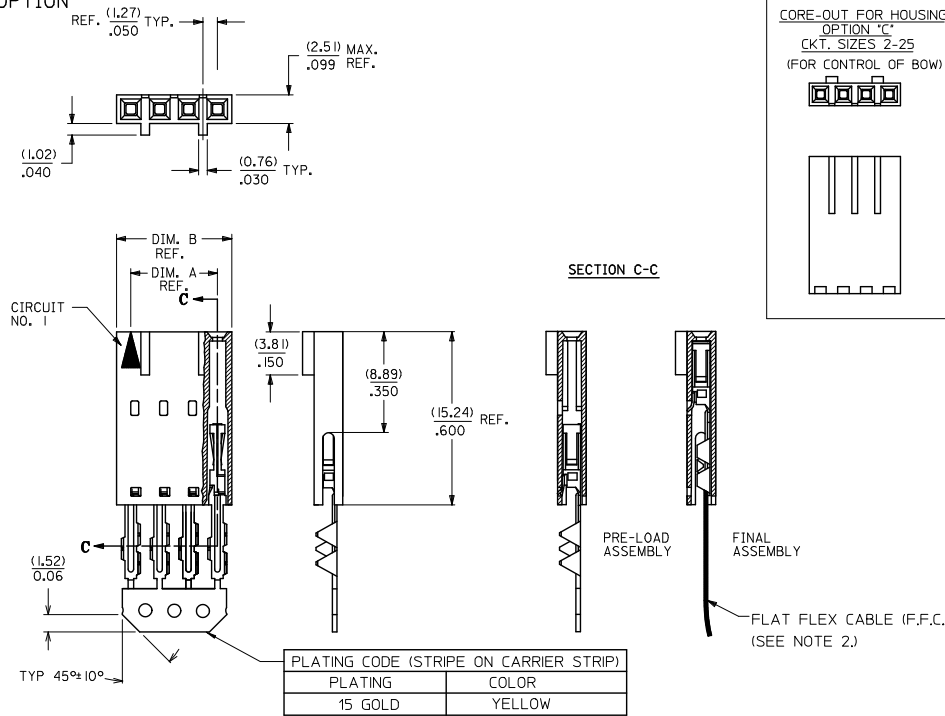
Click to view price, real time Inventory, Delivery & Lifecycle Information:

[Molex Connector Corporation](#)
[0015474151](#)

For any questions, you can email us directly:

sales@integrated-circuit.com

"C" - OPTION



CKT. SIZE	EDP. NO.	ENG. NO.	A	B
2	015-47-4021	70430-0211	(2.54) .100	(5.05) .199
3	015-47-4031	70430-0212	(5.08) .200	(7.59) .299
4	015-47-4041	70430-0213	(7.52) .300	(10.13) .399
5	015-47-4051	70430-0214	(10.16) .400	(12.67) .499
6	015-47-4061	70430-0215	(12.70) .500	(15.21) .599
7	015-47-4071	70430-0216	(15.24) .600	(17.75) .699
8	015-47-4081	70430-0217	(17.78) .700	(20.29) .799
9	015-47-4091	70430-0218	(20.32) .800	(22.83) .899
10	015-47-4101	70430-0219	(22.86) .900	(25.37) .999
11	015-47-4111	70430-0220	(25.40) 1.000	(27.91) 1.099
12	015-47-4121	70430-0221	(27.94) 1.100	(30.45) 1.199
13	015-47-4131	70430-0222	(30.48) 1.200	(32.99) 1.299
14	015-47-4141	70430-0223	(33.02) 1.300	(35.53) 1.399
15	015-47-4151	70430-0224	(35.56) 1.400	(38.07) 1.499
16	015-47-4161	70430-0225	(38.10) 1.500	(40.61) 1.599
17	015-47-4171	70430-0226	(40.64) 1.600	(43.15) 1.699
18	015-47-4181	70430-0227	(43.18) 1.700	(45.69) 1.799
19	015-47-4191	70430-0228	(45.72) 1.800	(48.23) 1.899
20	015-47-4201	70430-0229	(48.26) 1.900	(50.77) 1.999
21	015-47-4211	70430-0230	(50.80) 2.000	(53.31) 2.099
22	015-47-4221	70430-0231	(53.34) 2.100	(55.85) 2.199
23	015-47-4231	70430-0232	(55.88) 2.200	(58.39) 2.299
24	015-47-4241	70430-0233	(58.42) 2.300	(60.93) 2.399
25	015-47-4251	70430-0234	(60.96) 2.400	(63.47) 2.499

- HOUSING MATERIAL: GLASS FILLED POLYESTER, UL94V-0, COLOR: BLACK. TERMINAL MATERIAL: PHOSPHOR BRONZE. PLATING 15 GOLD - 0.38 MICROMETERS/15 MICROINCHES MINIMUM GOLD PLATE IN SELECT AREA 1.90 MICROMETERS/75 MICROINCHES MINIMUM TIN PLATE IN SELECT AREA 1.27 MICROMETERS/50 MICROINCHES MINIMUM NICKEL PLATE OVERALL.
- PRE LOADED ASSEMBLY TO BE USED WITH (0.30)/.012 MAX. THICK FLAT CABLE WITH (1.57)/.062 WIDE COPPER CONDUCTORS ON (2.54)/.100 CENTERS OR, (0.13)/.005-(0.28)/.011 THICK MYLAR WITH (1.02)/.040 - (1.65)/.065 WIDE SILVER INK CONDUCTORS ON (2.54)/.100 CENTERS.
- PRODUCT SPECIFICATION: PS-70430.
- STANDARD PACKING PER PK70873-0001 SHALL BE USED.
- SEE CHART FOR CIRCUIT SIZES, "A" AND "B" DIMENSIONS.
- TWO (2) CIRCUIT ASSEMBLIES SUPPLIED AS GROUPED PAIRS.
- PART MATES WITH (0.64)/.025 SQ. PINS, (8.13)/.320 TO (5.08)/.200 LONG ON (2.54)/.100 CENTERS.
- PARTS CONFORM TO CLASS B COSMETIC SPECIFICATION PS-45499-002.

THE PRIMARY CARTON WITH A LABEL STATING "ELV AND RoHS COMPLIANT" IS LEAD FREE. CARTONS WITHOUT THIS LABEL MAY CONTAIN LEAD.

STANDARDIZE	REV	QUALITY SYMBOLS	GENERAL TOLERANCES (UNLESS SPECIFIED)		DIMENSION STYLE		SCALE	DESIGN UNITS	THIRD ANGLE PROJECTION	
			mm	INCH	MM/IN	DATE				
EC NO: UCP2015-2452	2012/12/17	∇=0	4 PLACES ±---	±---	RAS	1986/07/21	INCH	ASSEMBLY, CONNECTOR FFC FEMALE SINGLE ROW (2.54)/.100	SHEET NO. 1 OF 1	
DRW:WHIPPLE	2012/12/17	∇=0.10	3 PLACES ±---	±0.10	CHECKED BY	DATE				
CHK:BJORDAN	2012/12/17	∇=0.15	2 PLACES ±0.25	±0.15	MJM	1986/07/21				
APPR:SMILLER	2013/01/31	∇=0.38	1 PLACE ±0.38	±---	APPROVED BY	DATE				
		∇=0	0 PLACE ±---	±---	SMILLER	2013/01/31				
			ANGULAR ±1/2°		MATERIAL NO.	DOCUMENT NO.				
			DRAFT WHERE APPLICABLE MUST REMAIN WITHIN DIMENSIONS		SEE TABLE	SDA-70430-0211-0234				
			THIS DRAWING CONTAINS INFORMATION THAT IS PROPRIETARY TO MOLEX INCORPORATED AND SHOULD NOT BE USED WITHOUT WRITTEN PERMISSION							