

Excellent Integrated System Limited

Stocking Distributor

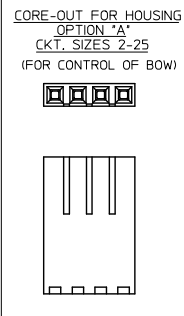
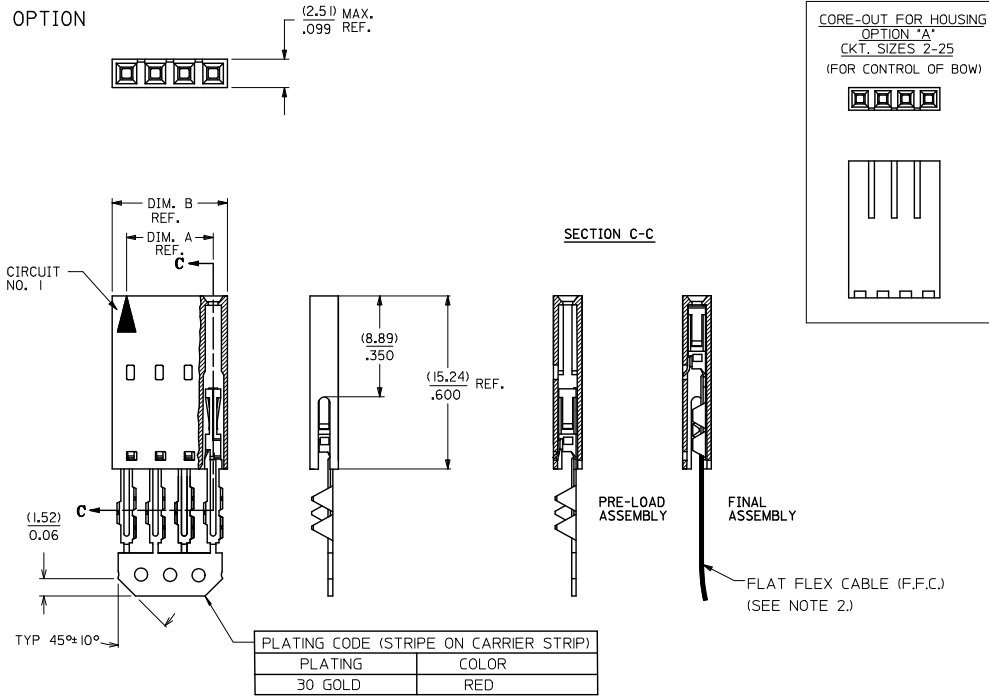
Click to view price, real time Inventory, Delivery & Lifecycle Information:

[Molex Connector Corporation](#)
[0015474214](#)

For any questions, you can email us directly:

sales@integrated-circuit.com

"A" - OPTION



CKT. SIZE	EDP. NO.	ENG. NO.	A	B
2	015-47-4024	70430-0351	(2.54) 100	(5.05) 199
3	015-47-4034	70430-0352	(5.08) 200	(7.59) 299
4	015-47-4044	70430-0353	(7.62) 300	(10.13) 399
5	015-47-4054	70430-0354	(10.16) 400	(12.67) 499
6	015-47-4064	70430-0355	(12.70) 500	(15.21) 599
7	015-47-4074	70430-0356	(15.24) 600	(17.75) 699
8	015-47-4084	70430-0357	(17.78) 700	(20.29) 799
9	015-47-4094	70430-0358	(20.32) 800	(22.83) 899
10	015-47-4104	70430-0359	(22.86) 900	(25.37) 999
11	015-47-4114	70430-0360	(25.40) 1,000	(27.91) 1,099
12	015-47-4124	70430-0361	(27.94) 1,100	(30.45) 1,199
13	015-47-4134	70430-0362	(30.48) 1,200	(32.99) 1,299
14	015-47-4144	70430-0363	(33.02) 1,300	(35.53) 1,399
15	015-47-4154	70430-0364	(35.56) 1,400	(38.07) 1,499
16	015-47-4164	70430-0365	(38.10) 1,500	(40.61) 1,599
17	015-47-4174	70430-0366	(40.64) 1,600	(43.15) 1,699
18	015-47-4184	70430-0367	(43.18) 1,700	(45.69) 1,799
19	015-47-4194	70430-0368	(45.72) 1,800	(48.23) 1,899
20	015-47-4204	70430-0369	(48.26) 1,900	(50.77) 1,999
21	015-47-4214	70430-0370	(50.80) 2,000	(53.31) 2,099
22	015-47-4224	70430-0371	(53.34) 2,100	(55.85) 2,199
23	015-47-4234	70430-0372	(55.88) 2,200	(58.39) 2,299
24	015-47-4244	70430-0373	(58.42) 2,300	(60.93) 2,399
25	015-47-4254	70430-0374	(60.96) 2,400	(63.47) 2,499

- HOUSING MATERIAL: GLASS FILLED POLYESTER, UL94V-0. COLOR: BLACK.
TERMINAL MATERIAL: PHOSPHOR BRONZE.
PLATING 30 GOLD -0.76 MICROMETERS/30 MICROINCHES MINIMUM GOLD PLATE IN SELECT AREA
1.90 MICROMETERS/75 MICROINCHES MINIMUM TIN PLATE IN SELECT AREA
1.27 MICROMETERS/50 MICROINCHES MINIMUM NICKEL PLATE OVERALL.
- PRE LOADED ASSEMBLY TO BE USED WITH (0.30)/.012 MAX. THICK FLAT CABLE WITH (1.57)/.062 WIDE COPPER CONDUCTORS ON (2.54)/.100 CENTERS OR, (0.13)/.005-(0.28)/.011 THICK MYLAR WITH (1.02)/.040 - (1.65)/.065 WIDE SILVER INK CONDUCTORS ON (2.54)/.100 CENTERS.
- PRODUCT SPECIFICATION: PS-70430.
- STANDARD PACKING PER PK70873-0001 SHALL BE USED.
- SEE CHART FOR CIRCUIT SIZES, "A" AND "B" DIMENSIONS.
- TWO (2) CIRCUIT ASSEMBLIES SUPPLIED AS GROUPED PAIRS.
- PART MATES WITH (0.64)/.025 SQ. PINS, (8.13)/.320 TO (5.08)/.200 LONG ON (2.54)/.100 CENTERS.
- PARTS CONFORM TO CLASS B COSMETIC SPECIFICATION PS-45499-002.

THE PRIMARY CARTON WITH A LABEL STATING "ELV AND RoHS COMPLIANT" IS LEAD FREE. CARTONS WITHOUT THIS LABEL MAY CONTAIN LEAD.

STANDARDIZE	DESCRIPTION	QUALITY SYMBOLS	GENERAL TOLERANCES (UNLESS SPECIFIED)		DIMENSION STYLE		SCALE	DESIGN UNITS	THIRD ANGLE PROJECTION
			mm	INCH	MM/IN	DATE			
EC NO: UCP2015-2452	2012/12/17	▽=0	4 PLACES ±---	±---	RAS	1986/07/21	INCH	ASSEMBLY, CONNECTOR FFC FEMALE SINGLE ROW (2.54)/.100	
DRW:WHIPPLE	2012/12/17	▽=0.10	3 PLACES ±---	±.010	CHECKED BY	DATE			
CHK:KJORGAN	2013/01/31	▽=0.25	2 PLACES ±0.25	±.015	MJM	1986/07/21			
APPR:SMILLER	2013/01/31	▽=0.38	1 PLACE ±0.38	±---	APPROVED BY	DATE			
		▽=0	0 PLACE ±---	±---	SMILLER	2013/01/31			
			ANGULAR ±1/2°		MATERIAL NO.		DOCUMENT NO.		SHEET NO.
			DRAFT WHERE APPLICABLE MUST REMAIN WITHIN DIMENSIONS		SEE TABLE		SDA-70430-0351-0374		1 OF 1
THIS DRAWING CONTAINS INFORMATION THAT IS PROPRIETARY TO MOLEX INCORPORATED AND SHOULD NOT BE USED WITHOUT WRITTEN PERMISSION									