

Excellent Integrated System Limited

Stocking Distributor

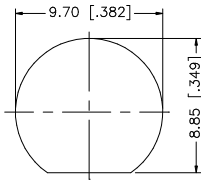
Click to view price, real time Inventory, Delivery & Lifecycle Information:

[Amphenol RF](#)
[112427](#)

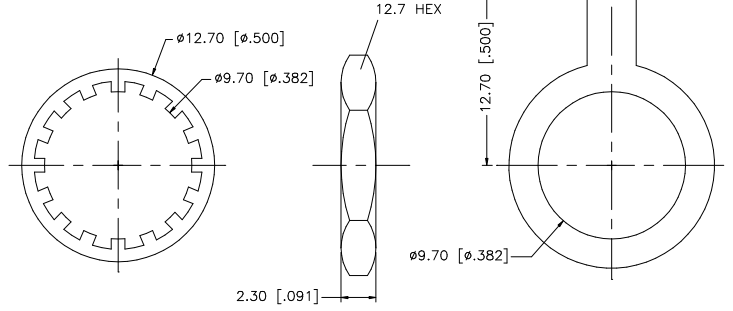
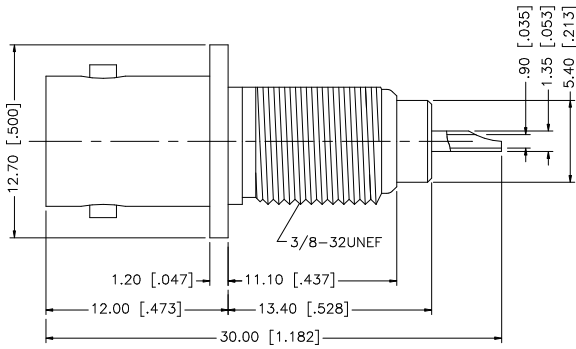
For any questions, you can email us directly:

sales@integrated-circuit.com

REV.	DATE	DESCRIPTION
NC	03/20/07	INITIAL RELEASE



RECOMMENDED MOUNTING HOLE



DESCRIPTION	MATERIAL	FINISH	QTY	UNLESS OTHERWISE SPECIFIED DIMENSIONS ARE IN MILLIMETERS. DIMENSIONS IN [] ARE IN INCHES AND FOR CUSTOMER REFERENCE ONLY.	APPROVALS	DATE	<h1 style="color: blue; margin: 0;">Amphenol Connex</h1>		
8				UNLESS OTHERWISE SPECIFIED TOLERANCES FOR MILLIMETERS ARE: 0.5 - 8mm ± 0.20mm 8 - 30mm ± 0.40mm 30 - 120mm ± 0.50mm UNLESS OTHERWISE SPECIFIED TOLERANCES FOR INCHES ARE: .020 - .315 = ± 0.007" .315 - 1.180 = ± 0.015" 1.180 - 4.724 = ± 0.020" DO NOT SCALE DRAWING	DRAWN	G.R.S.		03/20/07	BNC BULKHEAD RECEPTACLE JACK -
7					CHECKED			112427	
6	SOLDER TAB	BRASS	NICKEL		1	ISSUED			
5	HEX NUT	BRASS	NICKEL		1	SHEET	1 OF 1		
4	LOCK WASHER	BRASS	NICKEL		1	CAD FILE			DWG. NO. 112427.DWG
3	CONTACT PIN	PHOS. BRONZE	GOLD		1	C:/112/112427.DWG			REV. NC
2	INSULATOR	DELRIN	NATURAL		1				SIZE A
1	BODY	BRASS	NICKEL		1				SCALE NA