

## **Excellent Integrated System Limited**

Stocking Distributor

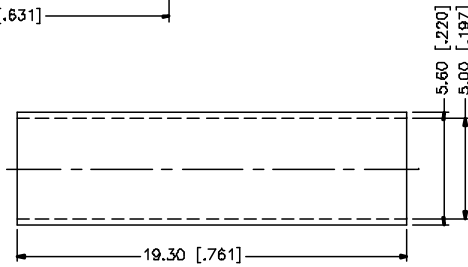
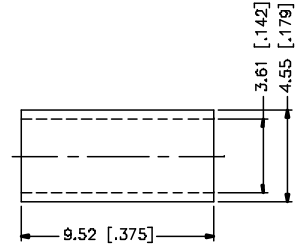
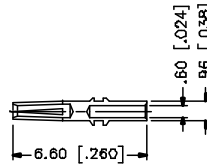
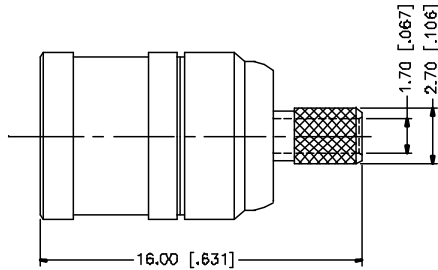
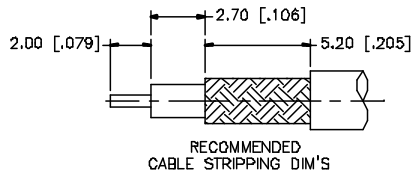
Click to view price, real time Inventory, Delivery & Lifecycle Information:

[Amphenol RF](#)  
[142183](#)

For any questions, you can email us directly:

[sales@integrated-circuit.com](mailto:sales@integrated-circuit.com)

REV.	DATE	DESCRIPTION
D	05/01/04	REFORMAT DRAWING



NOTE:

1. CRIMPED FERRULE  
HEX CRIMP SIZE .151"
2. CONTACT PIN TO SOLDER

REV.	DATE	DESCRIPTION	APPROVALS	DATE	PART DESCRIPTION
B			DRAWN G.R.S.	05/01/04	
7			CHECKED		
6			ISSUED		PART NO. 142183
5			SHEET 1 OF 1		
4	FERRULE	BRASS	NICKEL	1	DWC NO. 142183.DWC REV D BEE A SCALE NA
3	CONTACT PIN	PHOS. BRONZE	GOLD	1	
2	INSULATOR	TEFLON	NATURAL	1	
1	HOUSING/BODY	BRASS	NICKEL	1	
DESCRIPTION MATERIAL FINISH QTY				DO NOT SCALE DRAWING	
				C:/142/142183.DWG	

UNLESS OTHERWISE SPECIFIED DIMENSIONS ARE  
IN MILLIMETERS DIMENSIONS IN ( ) ARE IN  
INCHES AND FOR CUSTOMER REFERENCE ONLY.

UNLESS OTHERWISE SPECIFIED  
TOLERANCES FOR MILLIMETERS ARE:  
0.5 - 8mm ± 0.20mm  
8 - 30mm ± 0.40mm  
30 - 120mm ± 0.50mm

UNLESS OTHERWISE SPECIFIED  
TOLERANCES FOR INCHES ARE:  
.020 - .315 = ± 0.007"  
.315 - 1.180 = ± 0.015"  
1.180 - 4.724 = ± 0.020"

**Amphenol Connex**