

## Excellent Integrated System Limited

Stocking Distributor

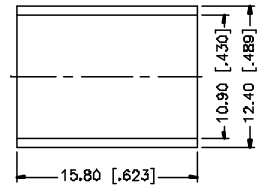
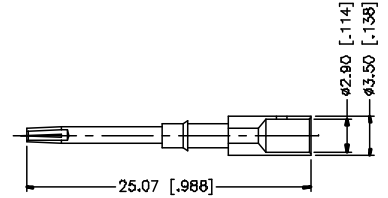
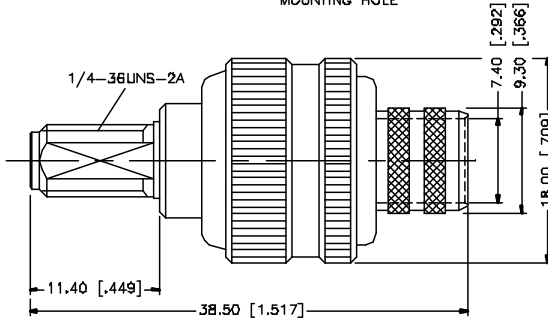
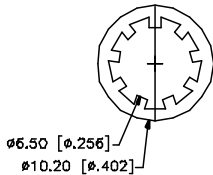
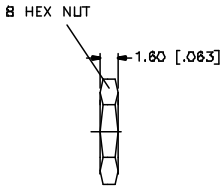
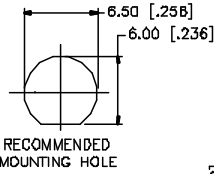
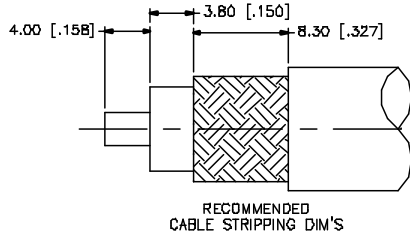
Click to view price, real time Inventory, Delivery & Lifecycle Information:

[Amphenol RF](#)  
[132333](#)

For any questions, you can email us directly:

[sales@integrated-circuit.com](mailto:sales@integrated-circuit.com)

REV.	DATE	DESCRIPTION
NC	07/16/01	INITIAL RELEASE
A	05/17/05	UPDATE DRAWING FORMAT



- CRIMP NOTES:
1. CRIMPED FERRULE  
HEX CRIMP SIZE .429"
  2. CRIMPED CONTACT PIN  
HEX CRIMP SIZE .118"
  3. MAX. PANEL THICKNESS = 3.2mm

DESCRIPTION	MATERIAL	FINISH	QTY	UNLESS OTHERWISE SPECIFIED DIMENSIONS ARE IN MILLIMETERS DIMENSIONS IN [ ] ARE IN INCHES AND FOR CUSTOMER REFERENCE ONLY.	APPROVALS	DATE	Amphenol Connex					
8					DRAWN	G.R.S.	05/17/05	PART DESCRIPTION <b>SMA BULKHEAD CRIMP JACK (FOR BELDEN 9913, 9914, LMR-400)</b>				
7					CHECKED							
6	FERRULE	COPPER	GOLD	1	ISSUED			PART NO. <b>132333</b>				
5	HEX NUT	BRASS	GOLD	1	SHEET	1 OF 1						
4	LOCK WASHER	BRASS	GOLD	1	CAD FILE	C:/132/132333.DWG		DWG. NO.	132333.DWG	REV. A	SIZE A	SCALE NA
3	CONTACT PIN	BRASS	GOLD	1								
2	INSULATOR	TEFLON	NATURAL	1								
1	BODY	BRASS	GOLD	1								
				UNLESS OTHERWISE SPECIFIED TOLERANCES FOR MILLIMETERS ARE: 0.5 - 8mm ± 0.20mm 8 - 30mm ± 0.40mm 30 - 120mm ± 0.50mm UNLESS OTHERWISE SPECIFIED TOLERANCES FOR INCHES ARE: .020 - .315 ± ± 0.007" .315 - 1.180 ± ± 0.015" 1.180 - 4.724 ± ± 0.020" DO NOT SCALE DRAWING								