

Excellent Integrated System Limited

Stocking Distributor

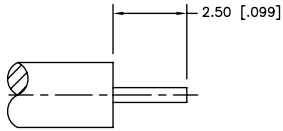
Click to view price, real time Inventory, Delivery & Lifecycle Information:

[Amphenol RF](#)
[132103RP](#)

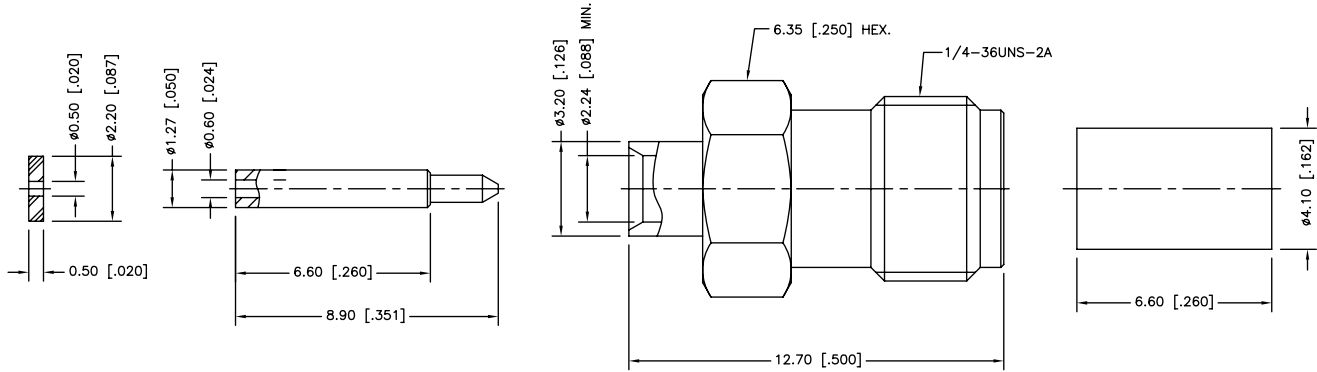
For any questions, you can email us directly:

sales@integrated-circuit.com

REV.	DATE	ECR NO.	DESCRIPTION
NC	04/12/12	XXXXXX	INITIAL RELEASE



RECOMMENDED
CABLE STRIPPING DIM'S



1. CONTACT PIN TO SOLDER

UNLESS OTHERWISE SPECIFIED DIMENSIONS ARE IN MILLIMETERS. DIMENSIONS IN [] ARE IN INCHES AND FOR CUSTOMER REFERENCE ONLY.				APPROVALS	DATE	<h1 style="color: blue;">Amphenol Connex</h1>			
4	INSULATOR	PTFE	NATURAL	1	DRAWN		M.ZHANG	04/12/12	SMA REVERSE POLARITY DIRECT SOLDER JACK (FOR .085", .086" SEMI-RIGID CABLE)
3	CONTACT PIN	BRASS	GOLD	1	CHECKED				
2	INSULATOR	PTFE	NATURAL	1	ISSUED				
1	BODY	BRASS	GOLD	1	SHEET	1 OF 1			
<small>UNLESS OTHERWISE SPECIFIED TOLERANCES FOR MILLIMETERS ARE: 0.5 - 8mm ± 0.20mm 8 - 30mm ± 0.40mm 30 - 120mm ± 0.50mm UNLESS OTHERWISE SPECIFIED TOLERANCES FOR INCHES ARE: .020 - .315 = ± 0.007" .315 - 1.180 = ± 0.015" 1.180 - 4.724 = ± 0.020"</small>				<small>DO NOT SCALE DRAWING</small>		CAD FILE C:/CONNEX/132103RP.DWG		PART NO. 132103RP	
				DWG. NO. 132103RP.DWG		REV. NC	SIZE A	SCALE NA	