



## Excellent Integrated System Limited

Stocking Distributor

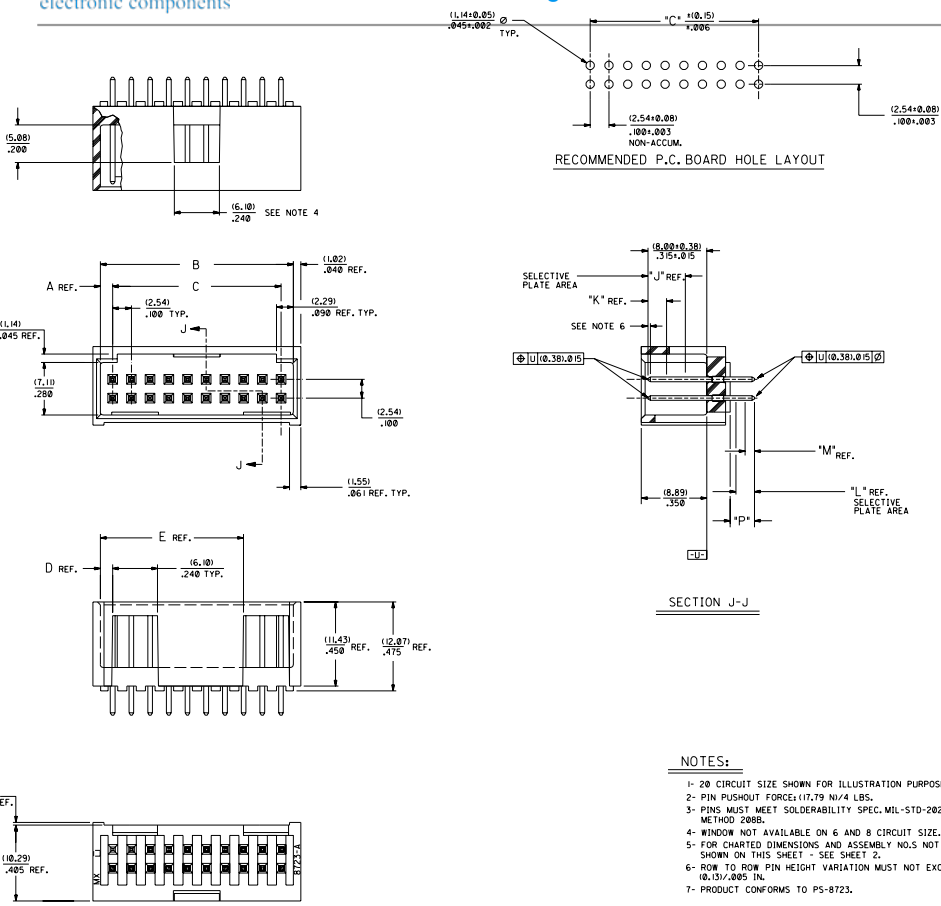
Click to view price, real time Inventory, Delivery & Lifecycle Information:

[Molex Connector Corporation](#)

[15-41-7060](#)

For any questions, you can email us directly:

[sales@integrated-circuit.com](mailto:sales@integrated-circuit.com)



- NOTES:**
- 20 CIRCUIT SIZE SHOWN FOR ILLUSTRATION PURPOSES.
  - PIN PUSHOUT FORCE: (17.79 N)/4 LBS.
  - PINS MUST MEET SOLDERABILITY SPEC. MIL-STD-202 METHOD 208B.
  - WINDOW NOT AVAILABLE ON 6 AND 8 CIRCUIT SIZE.
  - FOR CHARTED DIMENSIONS AND ASSEMBLY NOLS NOT SHOWN ON THIS SHEET - SEE SHEET 2.
  - ROW TO ROW PIN HEIGHT VARIATION MUST NOT EXCEED (0.15)/.005 IN.
  - PRODUCT CONFORMS TO PS-8723.

| CKT. | DIM. "A" | DIM. "B" | DIM. "C" | DIM. "D" | DIM. "E" |  |  |  |  |  |  |  |  |  |  |
|------|----------|----------|----------|----------|----------|--|--|--|--|--|--|--|--|--|--|
| 06   | (1.68)   | (8.43)   | (5.83)   | (1.68)   |          |  |  |  |  |  |  |  |  |  |  |
| 08   | (1.68)   | (10.37)  | (7.62)   | (1.68)   |          |  |  |  |  |  |  |  |  |  |  |
| 10   | (1.68)   | (12.31)  | (9.52)   | (1.68)   |          |  |  |  |  |  |  |  |  |  |  |
| 12   | (1.68)   | (14.25)  | (11.43)  | (1.68)   |          |  |  |  |  |  |  |  |  |  |  |
| 14   | (1.68)   | (16.19)  | (13.37)  | (1.68)   |          |  |  |  |  |  |  |  |  |  |  |
| 16   | (1.68)   | (18.13)  | (15.31)  | (1.68)   |          |  |  |  |  |  |  |  |  |  |  |
| 18   | (1.68)   | (20.07)  | (17.25)  | (1.68)   |          |  |  |  |  |  |  |  |  |  |  |
| 20   | (1.68)   | (22.01)  | (19.19)  | (1.68)   | (19.45)  |  |  |  |  |  |  |  |  |  |  |
| 22   | (1.68)   | (23.95)  | (21.13)  | (1.68)   | (21.39)  |  |  |  |  |  |  |  |  |  |  |
| 24   | (1.68)   | (25.89)  | (23.07)  | (1.68)   | (23.33)  |  |  |  |  |  |  |  |  |  |  |
| 26   | (1.68)   | (27.83)  | (25.01)  | (1.68)   | (25.27)  |  |  |  |  |  |  |  |  |  |  |
| 28   | (1.68)   | (29.77)  | (26.95)  | (1.68)   | (27.21)  |  |  |  |  |  |  |  |  |  |  |
| 30   | (1.68)   | (31.71)  | (28.89)  | (1.68)   | (29.15)  |  |  |  |  |  |  |  |  |  |  |
| 32   | (1.68)   | (33.65)  | (30.83)  | (1.68)   | (31.09)  |  |  |  |  |  |  |  |  |  |  |
| 34   | (1.68)   | (35.59)  | (32.77)  | (1.68)   | (33.03)  |  |  |  |  |  |  |  |  |  |  |
| 36   | (1.68)   | (37.53)  | (34.71)  | (1.68)   | (34.97)  |  |  |  |  |  |  |  |  |  |  |
| 38   | (1.68)   | (39.47)  | (36.65)  | (1.68)   | (36.91)  |  |  |  |  |  |  |  |  |  |  |
| 40   | (1.68)   | (41.41)  | (38.59)  | (1.68)   | (38.85)  |  |  |  |  |  |  |  |  |  |  |
| 42   | (1.68)   | (43.35)  | (40.53)  | (1.68)   | (40.79)  |  |  |  |  |  |  |  |  |  |  |
| 44   | (1.68)   | (45.29)  | (42.47)  | (1.68)   | (42.73)  |  |  |  |  |  |  |  |  |  |  |
| 46   | (1.68)   | (47.23)  | (44.41)  | (1.68)   | (44.67)  |  |  |  |  |  |  |  |  |  |  |
| 48   | (1.68)   | (49.17)  | (46.35)  | (1.68)   | (46.61)  |  |  |  |  |  |  |  |  |  |  |
| 50   | (1.68)   | (51.11)  | (48.29)  | (1.68)   | (48.55)  |  |  |  |  |  |  |  |  |  |  |
| 52   | (1.68)   | (53.05)  | (50.23)  | (1.68)   | (50.49)  |  |  |  |  |  |  |  |  |  |  |
| 54   | (1.68)   | (54.99)  | (52.17)  | (1.68)   | (52.43)  |  |  |  |  |  |  |  |  |  |  |
| 56   | (1.68)   | (56.93)  | (54.11)  | (1.68)   | (54.37)  |  |  |  |  |  |  |  |  |  |  |
| 58   | (1.68)   | (58.87)  | (56.05)  | (1.68)   | (56.31)  |  |  |  |  |  |  |  |  |  |  |
| 60   | (1.68)   | (60.81)  | (57.99)  | (1.68)   | (58.25)  |  |  |  |  |  |  |  |  |  |  |
| 62   | (1.68)   | (62.75)  | (59.93)  | (1.68)   | (60.19)  |  |  |  |  |  |  |  |  |  |  |
| 64   | (1.68)   | (64.69)  | (61.87)  | (1.68)   | (62.13)  |  |  |  |  |  |  |  |  |  |  |
| 66   | (1.68)   | (66.63)  | (63.81)  | (1.68)   | (64.07)  |  |  |  |  |  |  |  |  |  |  |
| 68   | (1.68)   | (68.57)  | (65.75)  | (1.68)   | (66.01)  |  |  |  |  |  |  |  |  |  |  |
| 70   | (1.68)   | (70.51)  | (67.69)  | (1.68)   | (67.95)  |  |  |  |  |  |  |  |  |  |  |
| 72   | (1.68)   | (72.45)  | (69.63)  | (1.68)   | (69.89)  |  |  |  |  |  |  |  |  |  |  |

**MATERIAL:**  
SHROUDED WAFER: GLASS FILLED POLYESTER, 94V-0; COLOR: BLACK.  
PINS: PHOSPHOR BRONZE. SEE SHEET 2 FOR FINISHES.

**ASSEMBLY STYLE "A" AND "B"**

REVISE ONLY ON CAD SYSTEM  
 WAIVER - STRAIGHT MT. FULLY SHROUDED  
 .100 GRID-POR. USE #1/.005 SQ. PINS  
 WITH .066 END WALLS  
 MOLEX INCORPORATED  
 SEE CHART SDA-8723-\*\*\*\*\*  
 REV. 4 / 1



**Distributor of Molex Connector Corporation: Excellent Integrated System Limited**  
 Datasheet of 15-41-7060 - CONN HEADER 60POS .100 VERT GOLD  
 Contact us: sales@integrated-circuit.com Website: www.integrated-circuit.com

| NO. OF CKTS | TIN        |               | TIN        |               | 15 GOLD    |               | 15 GOLD    |               | 30 GOLD    |               | 30 GOLD    |               | 50 GOLD       |               | 50 GOLD    |            |
|-------------|------------|---------------|------------|---------------|------------|---------------|------------|---------------|------------|---------------|------------|---------------|---------------|---------------|------------|------------|
|             | EDP NUMBER | ENG NUMBER    | EDP NUMBER | ENG NUMBER    | EDP NUMBER | ENG NUMBER    | EDP NUMBER | ENG NUMBER    | EDP NUMBER | ENG NUMBER    | EDP NUMBER | ENG NUMBER    | EDP NUMBER    | ENG NUMBER    | EDP NUMBER | ENG NUMBER |
| 06          | 15-42-6006 | A-8723-06A164 | 15-42-6106 | A-8723-06B164 | 15-29-6006 | A-8723-06A571 | 15-29-6106 | A-8723-06B571 | 15-41-7006 | A-8723-06A574 | 15-41-7106 | A-8723-06B574 | A-8723-06A596 | A-8723-06B596 |            |            |
| 08          | 15-42-6008 | A-8723-08A164 | 15-42-6108 | A-8723-08B164 | 15-29-6008 | A-8723-08A571 | 15-29-6108 | A-8723-08B571 | 15-41-7008 | A-8723-08A574 | 15-41-7108 | A-8723-08B574 | A-8723-08A596 | A-8723-08B596 |            |            |
| 10          | 15-42-6010 | A-8723-10A164 | 15-42-6110 | A-8723-10B164 | 15-29-6010 | A-8723-10A571 | 15-29-6110 | A-8723-10B571 | 15-41-7010 | A-8723-10A574 | 15-41-7110 | A-8723-10B574 | A-8723-10A596 | A-8723-10B596 |            |            |
| 12          | 15-42-6012 | A-8723-12A164 | 15-42-6112 | A-8723-12B164 | 15-29-6012 | A-8723-12A571 | 15-29-6112 | A-8723-12B571 | 15-41-7012 | A-8723-12A574 | 15-41-7112 | A-8723-12B574 | A-8723-12A596 | A-8723-12B596 |            |            |
| 14          | 15-42-6014 | A-8723-14A164 | 15-42-6114 | A-8723-14B164 | 15-29-6014 | A-8723-14A571 | 15-29-6114 | A-8723-14B571 | 15-41-7014 | A-8723-14A574 | 15-41-7114 | A-8723-14B574 | A-8723-14A596 | A-8723-14B596 |            |            |
| 16          | 15-42-6016 | A-8723-16A164 | 15-42-6116 | A-8723-16B164 | 15-29-6016 | A-8723-16A571 | 15-29-6116 | A-8723-16B571 | 15-41-7016 | A-8723-16A574 | 15-41-7116 | A-8723-16B574 | A-8723-16A596 | A-8723-16B596 |            |            |
| 18          | 15-42-6018 | A-8723-18A164 | 15-42-6118 | A-8723-18B164 | 15-29-6018 | A-8723-18A571 | 15-29-6118 | A-8723-18B571 | 15-41-7018 | A-8723-18A574 | 15-41-7118 | A-8723-18B574 | A-8723-18A596 | A-8723-18B596 |            |            |
| 20          | 15-42-6020 | A-8723-20A164 | 15-42-6120 | A-8723-20B164 | 15-29-6020 | A-8723-20A571 | 15-29-6120 | A-8723-20B571 | 15-41-7020 | A-8723-20A574 | 15-41-7120 | A-8723-20B574 | A-8723-20A596 | A-8723-20B596 |            |            |
| 22          | 15-42-6022 | A-8723-22A164 | 15-42-6122 | A-8723-22B164 | 15-29-6022 | A-8723-22A571 | 15-29-6122 | A-8723-22B571 | 15-41-7022 | A-8723-22A574 | 15-41-7122 | A-8723-22B574 | A-8723-22A596 | A-8723-22B596 |            |            |
| 24          | 15-42-6024 | A-8723-24A164 | 15-42-6124 | A-8723-24B164 | 15-29-6024 | A-8723-24A571 | 15-29-6124 | A-8723-24B571 | 15-41-7024 | A-8723-24A574 | 15-41-7124 | A-8723-24B574 | A-8723-24A596 | A-8723-24B596 |            |            |
| 26          | 15-42-6026 | A-8723-26A164 | 15-42-6126 | A-8723-26B164 | 15-29-6026 | A-8723-26A571 | 15-29-6126 | A-8723-26B571 | 15-41-7026 | A-8723-26A574 | 15-41-7126 | A-8723-26B574 | A-8723-26A596 | A-8723-26B596 |            |            |
| 28          | 15-42-6028 | A-8723-28A164 | 15-42-6128 | A-8723-28B164 | 15-29-6028 | A-8723-28A571 | 15-29-6128 | A-8723-28B571 | 15-41-7028 | A-8723-28A574 | 15-41-7128 | A-8723-28B574 | A-8723-28A596 | A-8723-28B596 |            |            |
| 30          | 15-42-6030 | A-8723-30A164 | 15-42-6130 | A-8723-30B164 | 15-29-6030 | A-8723-30A571 | 15-29-6130 | A-8723-30B571 | 15-41-7030 | A-8723-30A574 | 15-41-7130 | A-8723-30B574 | A-8723-30A596 | A-8723-30B596 |            |            |
| 32          | 15-42-6032 | A-8723-32A164 | 15-42-6132 | A-8723-32B164 | 15-29-6032 | A-8723-32A571 | 15-29-6132 | A-8723-32B571 | 15-41-7032 | A-8723-32A574 | 15-41-7132 | A-8723-32B574 | A-8723-32A596 | A-8723-32B596 |            |            |
| 34          | 15-42-6034 | A-8723-34A164 | 15-42-6134 | A-8723-34B164 | 15-29-6034 | A-8723-34A571 | 15-29-6134 | A-8723-34B571 | 15-41-7034 | A-8723-34A574 | 15-41-7134 | A-8723-34B574 | A-8723-34A596 | A-8723-34B596 |            |            |
| 36          | 15-42-6036 | A-8723-36A164 | 15-42-6136 | A-8723-36B164 | 15-29-6036 | A-8723-36A571 | 15-29-6136 | A-8723-36B571 | 15-41-7036 | A-8723-36A574 | 15-41-7136 | A-8723-36B574 | A-8723-36A596 | A-8723-36B596 |            |            |
| 38          | 15-42-6038 | A-8723-38A164 | 15-42-6138 | A-8723-38B164 | 15-29-6038 | A-8723-38A571 | 15-29-6138 | A-8723-38B571 | 15-41-7038 | A-8723-38A574 | 15-41-7138 | A-8723-38B574 | A-8723-38A596 | A-8723-38B596 |            |            |
| 40          | 15-42-6040 | A-8723-40A164 | 15-42-6140 | A-8723-40B164 | 15-29-6040 | A-8723-40A571 | 15-29-6140 | A-8723-40B571 | 15-41-7040 | A-8723-40A574 | 15-41-7140 | A-8723-40B574 | A-8723-40A596 | A-8723-40B596 |            |            |
| 42          | 15-42-6042 | A-8723-42A164 | 15-42-6142 | A-8723-42B164 | 15-29-6042 | A-8723-42A571 | 15-29-6142 | A-8723-42B571 | 15-41-7042 | A-8723-42A574 | 15-41-7142 | A-8723-42B574 | A-8723-42A596 | A-8723-42B596 |            |            |
| 44          | 15-42-6044 | A-8723-44A164 | 15-42-6144 | A-8723-44B164 | 15-29-6044 | A-8723-44A571 | 15-29-6144 | A-8723-44B571 | 15-41-7044 | A-8723-44A574 | 15-41-7144 | A-8723-44B574 | A-8723-44A596 | A-8723-44B596 |            |            |
| 46          | 15-42-6046 | A-8723-46A164 | 15-42-6146 | A-8723-46B164 | 15-29-6046 | A-8723-46A571 | 15-29-6146 | A-8723-46B571 | 15-41-7046 | A-8723-46A574 | 15-41-7146 | A-8723-46B574 | A-8723-46A596 | A-8723-46B596 |            |            |
| 48          | 15-42-6048 | A-8723-48A164 | 15-42-6148 | A-8723-48B164 | 15-29-6048 | A-8723-48A571 | 15-29-6148 | A-8723-48B571 | 15-41-7048 | A-8723-48A574 | 15-41-7148 | A-8723-48B574 | A-8723-48A596 | A-8723-48B596 |            |            |
| 50          | 15-42-6050 | A-8723-50A164 | 15-42-6150 | A-8723-50B164 | 15-29-6050 | A-8723-50A571 | 15-29-6150 | A-8723-50B571 | 15-41-7050 | A-8723-50A574 | 15-41-7150 | A-8723-50B574 | A-8723-50A596 | A-8723-50B596 |            |            |
| 52          | 15-42-6052 | A-8723-52A164 | 15-42-6152 | A-8723-52B164 | 15-29-6052 | A-8723-52A571 | 15-29-6152 | A-8723-52B571 | 15-41-7052 | A-8723-52A574 | 15-41-7152 | A-8723-52B574 | A-8723-52A596 | A-8723-52B596 |            |            |
| 54          | 15-42-6054 | A-8723-54A164 | 15-42-6154 | A-8723-54B164 | 15-29-6054 | A-8723-54A571 | 15-29-6154 | A-8723-54B571 | 15-41-7054 | A-8723-54A574 | 15-41-7154 | A-8723-54B574 | A-8723-54A596 | A-8723-54B596 |            |            |
| 56          | 15-42-6056 | A-8723-56A164 | 15-42-6156 | A-8723-56B164 | 15-29-6056 | A-8723-56A571 | 15-29-6156 | A-8723-56B571 | 15-41-7056 | A-8723-56A574 | 15-41-7156 | A-8723-56B574 | A-8723-56A596 | A-8723-56B596 |            |            |
| 58          | 15-42-6058 | A-8723-58A164 | 15-42-6158 | A-8723-58B164 | 15-29-6058 | A-8723-58A571 | 15-29-6158 | A-8723-58B571 | 15-41-7058 | A-8723-58A574 | 15-41-7158 | A-8723-58B574 | A-8723-58A596 | A-8723-58B596 |            |            |
| 60          | 15-42-6060 | A-8723-60A164 | 15-42-6160 | A-8723-60B164 | 15-29-6060 | A-8723-60A571 | 15-29-6160 | A-8723-60B571 | 15-41-7060 | A-8723-60A574 | 15-41-7160 | A-8723-60B574 | A-8723-60A596 | A-8723-60B596 |            |            |
| 62          | 15-42-6062 | A-8723-62A164 | 15-42-6162 | A-8723-62B164 | 15-29-6062 | A-8723-62A571 | 15-29-6162 | A-8723-62B571 | 15-41-7062 | A-8723-62A574 | 15-41-7162 | A-8723-62B574 | A-8723-62A596 | A-8723-62B596 |            |            |
| 64          | 15-42-6064 | A-8723-64A164 | 15-42-6164 | A-8723-64B164 | 15-29-6064 | A-8723-64A571 | 15-29-6164 | A-8723-64B571 | 15-41-7064 | A-8723-64A574 | 15-41-7164 | A-8723-64B574 | A-8723-64A596 | A-8723-64B596 |            |            |
| 66          | 15-42-6066 | A-8723-66A164 | 15-42-6166 | A-8723-66B164 | 15-29-6066 | A-8723-66A571 | 15-29-6166 | A-8723-66B571 | 15-41-7066 | A-8723-66A574 | 15-41-7166 | A-8723-66B574 | A-8723-66A596 | A-8723-66B596 |            |            |
| 68          | 15-42-6068 | A-8723-68A164 | 15-42-6168 | A-8723-68B164 | 15-29-6068 | A-8723-68A571 | 15-29-6168 | A-8723-68B571 | 15-41-7068 | A-8723-68A574 | 15-41-7168 | A-8723-68B574 | A-8723-68A596 | A-8723-68B596 |            |            |
| 70          | 15-42-6070 | A-8723-70A164 | 15-42-6170 | A-8723-70B164 | 15-29-6070 | A-8723-70A571 | 15-29-6170 | A-8723-70B571 | 15-41-7070 | A-8723-70A574 | 15-41-7170 | A-8723-70B574 | A-8723-70A596 | A-8723-70B596 |            |            |
| 72          | 15-42-6072 | A-8723-72A164 | 15-42-6172 | A-8723-72B164 | 15-29-6072 | A-8723-72A571 | 15-29-6172 | A-8723-72B571 | 15-41-7072 | A-8723-72A574 | 15-41-7172 | A-8723-72B574 | A-8723-72A596 | A-8723-72B596 |            |            |

REVISIONS

| NO. | DESCRIPTION     | DATE     |
|-----|-----------------|----------|
| 1   | INITIAL RELEASE | 12/07/17 |
| 2   | REVISION        | 12/07/17 |

SALES ASSEMBLY  
 WAFER-STRAIGHT MET FULLY SHROUNDED  
 .100 GRID-FOR USE W/ .025 SQ. PINS  
 WITH .866 END WALLS

MOLEX INCORPORATED  
 1500 S. CALIFORNIA AVE  
 BERKELEY, CA 94702

SEE CHART SDA-8723-\*\*\*\*\*