



Excellent Integrated System Limited

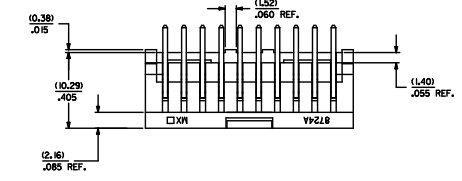
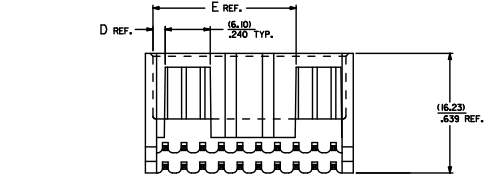
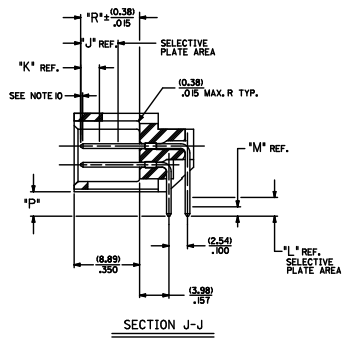
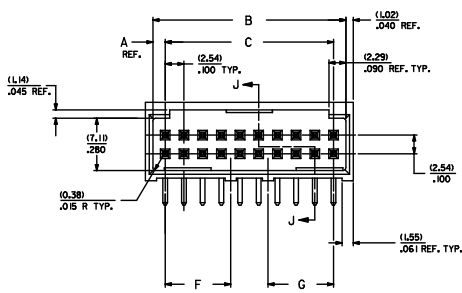
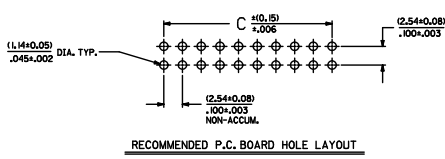
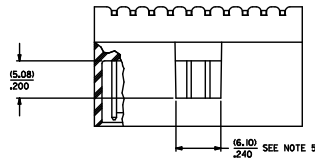
Stocking Distributor

Click to view price, real time Inventory, Delivery & Lifecycle Information:

[Molex Connector Corporation](#)
[15-41-8044](#)

For any questions, you can email us directly:
sales@integrated-circuit.com

20 19 18 17 16 15 14 13 12 11 10 9 8 7 6 5 4 3 2 1



- NOTES:**
1. MATERIAL: SHROUDED WAFER, GLASS FILLED NYLON, COLOR: BLACK, UL94V-0 PINS: PHOSPHOR BRONZE
 2. FINISH: SEE CHARTS
 3. PRODUCT SPECIFICATION: PS-8723
 4. PACKAGING INFORMATION: SEE CHARTS
 5. WINDOW NOT AVAILABLE ON 8 DKT.
 6. FOR CHARTED DIMENSIONS AND ASSEMBLY N.O.S NOT SHOWN ON THIS SHEET - SEE SHEET 2.
 7. 20 CIRCUIT SIZE SHOWN FOR ILLUSTRATION PURPOSES.
 8. FN PUSH-OUT FORCE: (17.78 N) 4 LBS.
 9. PINS MUST MEET SOLDERABILITY SPEC. MIL-STD-202 METHOD 208B.
 10. ROW TO ROW PIN HEIGHT VARIATION MUST NOT EXCEED (0.025/0.10) IN.
 11. THIS PART CONFORMS TO CLASS B REQUIREMENTS OF COSMETIC SPECIFICATION PS-45499-002.

DKT.	DIM. "A"	DIM. "B"	DIM. "C"	DIM. "D"	DIM. "E"	DIM. "F"	DIM. "G"
06	(.68) .066	(5.43) .032	(5.08) .066	(.68) .066			
08	(.68) .066	(4.93) .032	(4.58) .066	(.68) .066			
10	(.68) .066	(4.43) .032	(4.08) .066	(.68) .066			
12	(.68) .066	(3.93) .032	(3.58) .066	(.68) .066			
14	(.68) .066	(3.43) .032	(3.08) .066	(.68) .066			
16	(.68) .066	(2.93) .032	(2.58) .066	(.68) .066			
18	(.68) .066	(2.43) .032	(2.08) .066	(.68) .066			
20	(.68) .066	(1.93) .032	(1.58) .066	(.68) .066			
22	(.68) .066	(1.43) .032	(1.08) .066	(.68) .066			
24	(.68) .066	(.93) .032	(.58) .066	(.68) .066			
26	(.68) .066	(.43) .032	(.08) .066	(.68) .066			
28	(.68) .066	(.13) .032	(.22) .066	(.68) .066			
30	(.68) .066	(.13) .032	(.22) .066	(.68) .066			
32	(.68) .066	(.13) .032	(.22) .066	(.68) .066			
34	(.68) .066	(.13) .032	(.22) .066	(.68) .066			
36	(.68) .066	(.13) .032	(.22) .066	(.68) .066			
38	(.68) .066	(.13) .032	(.22) .066	(.68) .066			
40	(.68) .066	(.13) .032	(.22) .066	(.68) .066			
42	(.68) .066	(.13) .032	(.22) .066	(.68) .066			
44	(.68) .066	(.13) .032	(.22) .066	(.68) .066			
46	(.68) .066	(.13) .032	(.22) .066	(.68) .066			
48	(.68) .066	(.13) .032	(.22) .066	(.68) .066			
50	(.68) .066	(.13) .032	(.22) .066	(.68) .066			
52	(.68) .066	(.13) .032	(.22) .066	(.68) .066			
54	(.68) .066	(.13) .032	(.22) .066	(.68) .066			
56	(.68) .066	(.13) .032	(.22) .066	(.68) .066			
58	(.68) .066	(.13) .032	(.22) .066	(.68) .066			
60	(.68) .066	(.13) .032	(.22) .066	(.68) .066			
62	(.68) .066	(.13) .032	(.22) .066	(.68) .066			
64	(.68) .066	(.13) .032	(.22) .066	(.68) .066			
66	(.68) .066	(.13) .032	(.22) .066	(.68) .066			
68	(.68) .066	(.13) .032	(.22) .066	(.68) .066			
70	(.68) .066	(.13) .032	(.22) .066	(.68) .066			
72	(.68) .066	(.13) .032	(.22) .066	(.68) .066			

ASSEMBLY STYLES "A", "B", AND "G"

ADD NOTES EC NO. UZF2008-539 DRAWN BY: 2008/07/26 CHECKED BY: 2008/07/26 APPROVED BY: 2008/07/26 REV.	QUALITY SYMBOLS 4 PLACES +---+ 3 PLACES +---+ 2 PLACES +---+ 1 PLACE +---+ ANGULAR ±1/2°	GENERAL TOLERANCES (UNLESS SPECIFIED) mm INCH ±.010 ±.010 ±0.25 ±.014 ±0.36 ±.014		DIMENSION STYLE M/M IN 4:1		SCALE DESIGN UNITS INCH 4:1		THIRD ANGLE PROJECTION 3RD ANGLE		
		DRAWN BY JL DATE 1986/06/26 CHECKED BY RB DATE 1986/06/26 APPROVED BY MAZ DATE 1986/06/26		SALES ASSEMBLY WAFER RIGHT ANGLE FULLY SHROUDED .100 GRID		MOLEX INCORPORATED		SDA-8724-*****		SHEET NO. 1 OF 8
		DRAFT WHERE APPLICABLE MUST REMAIN WITHIN DIMENSIONS		SEE CHART		INCORPORATED		AND SHOULD NOT BE USED WITHOUT WRITTEN PERMISSION		
		THIS DRAWING CONTAINS INFORMATION THAT IS PROPRIETARY TO MOLEX INCORPORATED AND SHOULD NOT BE USED WITHOUT WRITTEN PERMISSION								

15-Frame_0_P_Rev. E 2008/07/26



Distributor of Molex Connector Corporation: Excellent Integrated System Limited

Datasheet of 15-41-8044 - CONN HEADER 44POS .100 R/A GOLD

Contact us: sales@integrated-circuit.com Website: www.integrated-circuit.com

Table with columns: ENGINEERING PART NUMBER, RELEASE FOR MANUFACTURE, P REF., PLATING (SEE NOTES ON THIS SHEET), CONNECTOR END PLATING (TYPE, J LENGTH, K MEAS., R ± (.03) .015), P.C. BOARD END PLATING (TYPE, L LENGTH, M MEAS.), PACKAGING INFORMATION, and PLATING FINISHES (TIN, 15 GOLD, 30 GOLD).

Table with columns: NO. OF CKTS, TIN, 15 GOLD, 30 GOLD, TIN, and multiple columns for EDP NUMBER and ENG NUMBER.

QUALITY SYMBOLS, GENERAL TOLERANCES (UNLESS SPECIFIED), DIMENSION STYLE (MM/INCH), SCALE, DESIGN UNITS (INCH), THIRD ANGLE PROJECTION, DRAWN BY, CHECKED BY, APPROVED BY, MATERIAL NO., SEE CHART, DOCUMENT NO., SALES ASSEMBLY WAFER RIGHT ANGLE FULLY SHROUDED .100 GRID, MOLEX INCORPORATED, SDA-8724-*****