



Excellent Integrated System Limited

Stocking Distributor

Click to view price, real time Inventory, Delivery & Lifecycle Information:

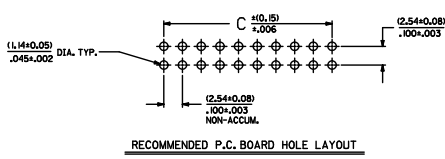
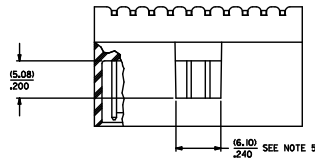
[Molex Connector Corporation](#)

[15-41-8062](#)

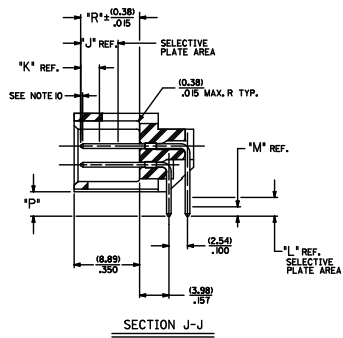
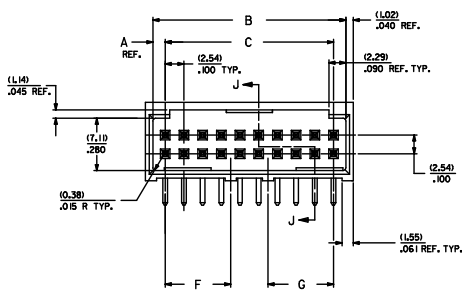
For any questions, you can email us directly:

sales@integrated-circuit.com

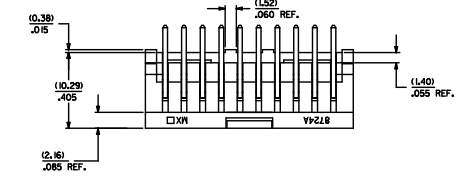
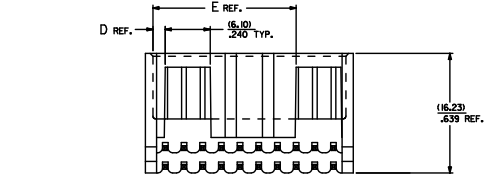
20 19 18 17 16 15 14 13 12 11 10 9 8 7 6 5 4 3 2 1



RECOMMENDED P.C. BOARD HOLE LAYOUT



SECTION J-J



- NOTES:**
1. MATERIAL: SHROUDED WAFER, GLASS FILLED NYLON, COLOR: BLACK, UL94V-0 PINS: PHOSPHOR BRONZE
 2. FINISH: SEE CHARTS
 3. PRODUCT SPECIFICATION: PS-8723
 4. PACKAGING INFORMATION: SEE CHARTS
 5. WINDOW NOT AVAILABLE ON 8 DKT.
 6. FOR CHARTED DIMENSIONS AND ASSEMBLY N.O.S NOT SHOWN ON THIS SHEET - SEE SHEET 2.
 7. 20 CIRCUIT SIZE SHOWN FOR ILLUSTRATION PURPOSES.
 8. PIN PUSHOUT FORCE: (17.78 N) 4 LBS.
 9. PINS MUST MEET SOLDERABILITY SPEC. MIL-STD-202 METHOD 208B.
 10. ROW TO ROW PIN HEIGHT VARIATION MUST NOT EXCEED (0.25/0.10) IN.
 11. THIS PART CONFORMS TO CLASS B REQUIREMENTS OF COSMETIC SPECIFICATION PS-45499-002.

DKT.	DIM. "A"	DIM. "B"	DIM. "C"	DIM. "D"	DIM. "E"	DIM. "F"	DIM. "G"
06	(1.68) ± .066	(5.43) ± .032	(5.08) ± .066	(1.68) ± .066			
08	(1.68) ± .066	(10.87) ± .066	(7.62) ± .066	(1.68) ± .066			
10	(1.68) ± .066	(16.51) ± .066	(10.87) ± .066	(1.68) ± .066			
12	(1.68) ± .066	(16.51) ± .066	(16.70) ± .066	(1.68) ± .066			
14	(1.68) ± .066	(16.51) ± .066	(16.24) ± .066	(1.68) ± .066			
16	(1.68) ± .066	(7.62) ± .066	(10.87) ± .066	(1.68) ± .066			
18	(1.68) ± .066	(23.67) ± .066	(20.32) ± .066	(1.68) ± .066			
20	(1.68) ± .066	(23.67) ± .066	(23.67) ± .066	(1.68) ± .066			
22	(1.68) ± .066	(23.67) ± .066	(25.40) ± .066	(1.68) ± .066			
24	(1.68) ± .066	(23.67) ± .066	(27.54) ± .066	(1.68) ± .066			
26	(1.68) ± .066	(33.83) ± .066	(30.48) ± .066	(1.68) ± .066			
28	(1.68) ± .066	(36.37) ± .066	(33.02) ± .066	(1.68) ± .066			
30	(1.68) ± .066	(36.37) ± .066	(36.50) ± .066	(1.68) ± .066			
32	(1.68) ± .066	(41.43) ± .066	(38.10) ± .066	(1.68) ± .066			
34	(1.68) ± .066	(43.98) ± .066	(40.64) ± .066	(1.68) ± .066			
36	(1.68) ± .066	(46.53) ± .066	(43.18) ± .066	(1.68) ± .066			
38	(1.68) ± .066	(49.07) ± .066	(45.72) ± .066	(1.68) ± .066			
40	(1.68) ± .066	(51.62) ± .066	(48.26) ± .066	(1.68) ± .066			
42	(1.68) ± .066	(54.17) ± .066	(50.80) ± .066	(1.68) ± .066			
44	(1.68) ± .066	(56.72) ± .066	(53.34) ± .066	(1.68) ± .066			
46	(1.68) ± .066	(59.27) ± .066	(55.88) ± .066	(1.68) ± .066			
48	(1.68) ± .066	(61.82) ± .066	(58.42) ± .066	(1.68) ± .066			
50	(1.68) ± .066	(64.37) ± .066	(60.96) ± .066	(1.68) ± .066			
52	(1.68) ± .066	(66.92) ± .066	(63.50) ± .066	(1.68) ± .066			
54	(1.68) ± .066	(69.47) ± .066	(66.04) ± .066	(1.68) ± .066			
56	(1.68) ± .066	(72.02) ± .066	(68.58) ± .066	(1.68) ± .066			
58	(1.68) ± .066	(74.57) ± .066	(71.12) ± .066	(1.68) ± .066			
60	(1.68) ± .066	(77.12) ± .066	(73.66) ± .066	(1.68) ± .066			
62	(1.68) ± .066	(79.67) ± .066	(76.20) ± .066	(1.68) ± .066			
64	(1.68) ± .066	(82.22) ± .066	(78.74) ± .066	(1.68) ± .066			
66	(1.68) ± .066	(84.77) ± .066	(81.28) ± .066	(1.68) ± .066			
68	(1.68) ± .066	(87.32) ± .066	(83.82) ± .066	(1.68) ± .066			
70	(1.68) ± .066	(89.87) ± .066	(86.36) ± .066	(1.68) ± .066			
72	(1.68) ± .066	(92.42) ± .066	(88.90) ± .066	(1.68) ± .066			

ASSEMBLY STYLES "A", "B", AND "G"

ADD NOTES: EC NO. 15-41-8062-539 DRAWN BY: 2006/07/26 CHECKED BY: 2006/07/26 APPROVED BY: 2006/07/26	QUALITY SYMBOLS: 4 PLACES ± .010 3 PLACES ± .010 2 PLACES ± 0.25 ± .014 1 PLACE ± 0.36 ± .014 ANGULAR ± 1/2°	GENERAL TOLERANCES (UNLESS SPECIFIED): DIMENSION STYLE: MM/INCH SCALE: 4:1 DESIGN UNITS: INCH THIRD ANGLE PROJECTION	DRAWN BY: JL DATE: 1986/06/16 CHECKED BY: RB DATE: 1986/06/16 APPROVED BY: MAZ DATE: 1986/06/16	TITLE: SALES ASSEMBLY WAFER RIGHT ANGLE FULLY SHROUDED .100 GRID MOLEX INCORPORATED SDA-8724-***** 1 OF 8	
		DRAFT WHERE APPLICABLE WITHIN DIMENSIONS	SEE CHART	DOCUMENT NO.	SHEET NO.
		THIS DRAWING CONTAINS INFORMATION THAT IS PROPRIETARY TO MOLEX INCORPORATED AND SHOULD NOT BE USED WITHOUT WRITTEN PERMISSION	INCORPORATED	MOLEX	1 OF 8
		INCORPORATED	MOLEX	MOLEX	1 OF 8

15-Frame_0_P_Rev. E 2006/07/26

Table with columns: ENGINEERING PART NUMBER, RELEASE FOR MANUFACTURE, P REF., PLATING (SEE NOTES ON THIS SHEET), CONNECTOR END PLATING (TYPE, J LENGTH, K MEAS., R +/- .035) .015), P.C. BOARD END PLATING (TYPE, L LENGTH, M MEAS.), PACKAGING INFORMATION, PLATING FINISHES (TIN, 15 GOLD, 30 GOLD), and a note about shipping cartons.

Table with columns: NO. OF CKTS, TIN, 15 GOLD, 30 GOLD, and various EDG NUMBER columns.

Technical drawing area including a title block with 'UPDATE TITLE BLOCK', 'GENERAL TOLERANCES UNLESS SPECIFIED', 'DIMENSION STYLE M/M/IN', 'SCALE', 'DESIGN UNITS INCH', 'THIRD ANGLE PROJECTION', 'DRAWN BY', 'CHECKED BY', 'DATE', 'APPROVED BY', 'MATERIAL NO.', 'DOCUMENT NO.', 'DRAFT WHERE APPLICABLE MUST REMAIN WITHIN DIMENSIONS', 'SEE CHART', and 'THIS DRAWING CONTAINS INFORMATION THAT IS PROPRIETARY TO MOLEX INCORPORATED AND SHOULD NOT BE USED WITHOUT WRITTEN PERMISSION'.