

Excellent Integrated System Limited

Stocking Distributor

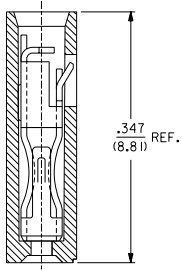
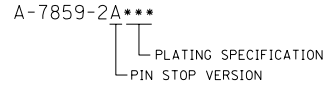
Click to view price, real time Inventory, Delivery & Lifecycle Information:

[Molex Connector Corporation](#)
[15-29-1027](#)

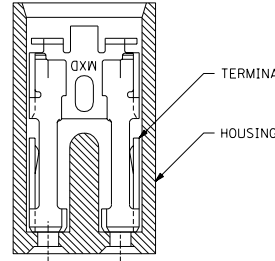
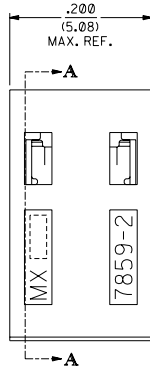
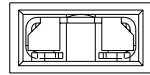
For any questions, you can email us directly:
sales@integrated-circuit.com

EDP NO.	ENG NO.	FINISH
15-38-1026	A-7859-2A164	TIN OVERALL
15-29-1025	A-7859-2A554	15 GOLD
15-29-1027	A-7859-2A561	30 GOLD

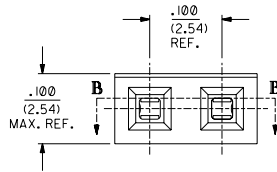
PART IDENTIFICATION:



SECTION A-A



SECTION B-B



NOTES:

- MATERIAL:
HOUSING: GLASS FILLED POLYESTER; 94V-0; COLOR: BLACK
TERMINAL: PHOSPHOR BRONZE ALLOY.
- THIS PRODUCT CONFORMS TO MOLEX PRODUCT SPEC. PS-7859.
- TO BE USED WITH .025/(0.64) SQUARE PINS.
- MINIMUM MATING PIN LENGTH: .200/(5.08)
MAXIMUM MATING PIN LENGTH: .270/(6.86)
- PRODUCT IS PACKAGED IN BOXES PER PK-70873-0815.

FINISH SPECIFICATION

- TIN OVERALL - .000150 MINIMUM TIN PLATE OVER
.000050 MINIMUM NICKEL UNDERPLATE.
- 15 GOLD - .000015 MINIMUM GOLD PLATE IN SELECT AREA OVER
.000050 MINIMUM NICKEL UNDERPLATE OVERALL.
- 30 GOLD - .000030 MINIMUM GOLD PLATE IN SELECT AREA OVER
.000050 MINIMUM NICKEL UNDERPLATE OVERALL.

NOTE FOR LEAD FREE CONVERSION:

THE PRIMARY SHIPPING CARTON WILL BE LABELED *COMPLIANT TO ROHS DIRECTIVE 2002/95/EC AND ELV ANNEX II OF DIRECTIVE 2000/53/EC*. CARTONS WITHOUT THIS LABEL MAY CONTAIN PRODUCT WITH LEAD.

REV.	DESCRIPTION
D	LEAD FREE CONV. PER ECN LCP2004-2133 RR:ADAMS 04/04/21
C1	ADDED PNG SPEC. PER ECN U70786 WHEATSTON 97/277
C	CHANGED MATERIAL PER ECN #U5214 95/06/02 CAC
B	REVISED ENG. NOS. PER ECN # U31581 10/26/93 RECD
A	RELEASED PER ECN # U30372 03/11/93 RECD
3	REVISE GOLD PLT. PER ECN # U12055 10/18/91 AAB
2	REVISE TERM. PLT. PER ECN # U11095 06/18/91 AAB
1	"X" RELEASE PER ECN # U10445 02/07/91 AAB

DIMENSIONS SHOWN (METRIC) INCH UNLESS OTHERWISE SPECIFIED TOLERANCES: ANGULAR ± 1/2°		MFG. SH. REV. LTR. REVISIONS																															
<table border="1"> <thead> <tr> <th>PLATE</th> <th>INCH</th> <th>METRIC</th> </tr> </thead> <tbody> <tr> <td>1 PLATE</td> <td>± .005</td> <td>---</td> </tr> <tr> <td>2 PLATE</td> <td>± .01</td> <td>± 0.13</td> </tr> <tr> <td>3 PLATE</td> <td>---</td> <td>± 0.25</td> </tr> </tbody> </table>		PLATE	INCH	METRIC	1 PLATE	± .005	---	2 PLATE	± .01	± 0.13	3 PLATE	---	± 0.25	<table border="1"> <tr> <td>□ = 0</td> <td>▽ = 0</td> <td>REVISE ONLY ON CAD SYSTEM</td> </tr> <tr> <td colspan="3">TITLE: SALES ASSY - SHUNT 2-CIRCUIT TERMINAL W/PIN STOP</td> </tr> <tr> <td colspan="2">MOLEX INCORPORATED</td> <td>SHEET NO. DATE</td> </tr> <tr> <td colspan="2">SEE CHART</td> <td>1 OF 1 02/07/91</td> </tr> <tr> <td colspan="2">PART NO. SDA-7859-2A***N</td> <td>FILE NAME</td> </tr> <tr> <td colspan="2">57859X1A</td> <td>THIS DRAWING CONTAINS INFORMATION THAT IS PROPRIETARY TO MOLEX. IT IS NOT TO BE USED WITHOUT WRITTEN PERMISSION. DA</td> </tr> </table>		□ = 0	▽ = 0	REVISE ONLY ON CAD SYSTEM	TITLE: SALES ASSY - SHUNT 2-CIRCUIT TERMINAL W/PIN STOP			MOLEX INCORPORATED		SHEET NO. DATE	SEE CHART		1 OF 1 02/07/91	PART NO. SDA-7859-2A***N		FILE NAME	57859X1A		THIS DRAWING CONTAINS INFORMATION THAT IS PROPRIETARY TO MOLEX. IT IS NOT TO BE USED WITHOUT WRITTEN PERMISSION. DA
PLATE	INCH	METRIC																															
1 PLATE	± .005	---																															
2 PLATE	± .01	± 0.13																															
3 PLATE	---	± 0.25																															
□ = 0	▽ = 0	REVISE ONLY ON CAD SYSTEM																															
TITLE: SALES ASSY - SHUNT 2-CIRCUIT TERMINAL W/PIN STOP																																	
MOLEX INCORPORATED		SHEET NO. DATE																															
SEE CHART		1 OF 1 02/07/91																															
PART NO. SDA-7859-2A***N		FILE NAME																															
57859X1A		THIS DRAWING CONTAINS INFORMATION THAT IS PROPRIETARY TO MOLEX. IT IS NOT TO BE USED WITHOUT WRITTEN PERMISSION. DA																															