

Excellent Integrated System Limited

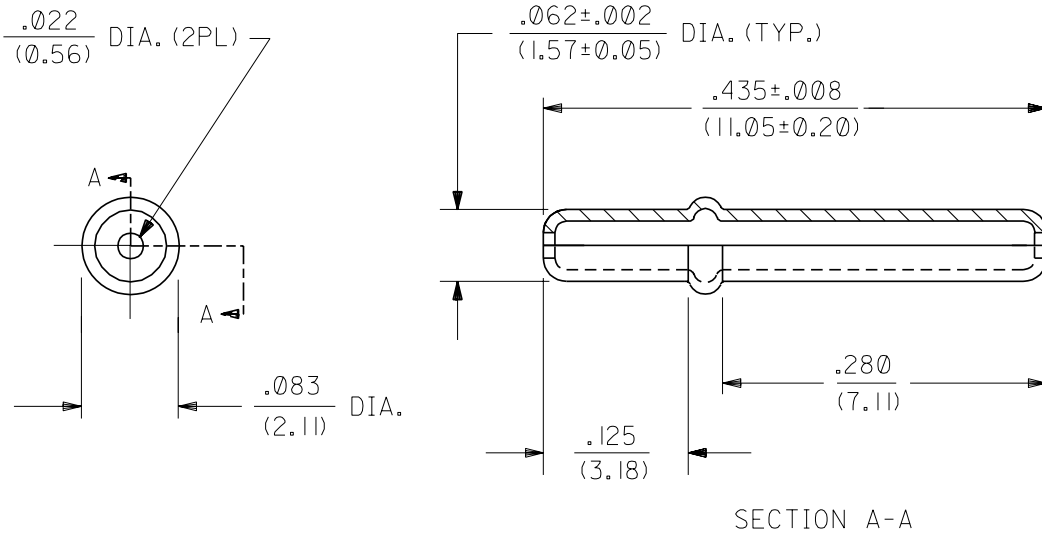
Stocking Distributor

Click to view price, real time Inventory, Delivery & Lifecycle Information:

[Molex Connector Corporation](#)
[0016060038](#)

For any questions, you can email us directly:

sales@integrated-circuit.com



NOTES:

1. MATERIAL: CARTRIDGE BRASS, ALLOY #C26000.
2. FINISH: .000200/(0.00508) MIN. ELECTRO TIN PLATE.

A	FINAL RELEASE ECN # U10748 4-4-91 RW

MFG.	SH.	REV.	LTR.	REVISIONS
------	-----	------	------	-----------

DIMENSIONS SHOWN (METRIC) INCH		▽ =		▼ =		REVISE ONLY ON CAD SYSTEM	
UNLESS OTHERWISE SPECIFIED TOLERANCES: ANGULAR ± 1/2°		TITLE					
		.062/(1.57) DIA. PIN FOR P.C. BOARD MOUNTING					
INCH METRIC		molex		MOLEX INCORPORATED		SHEET NO.	DATE
3 PLACE	± .005	LISLE,ILL. 60532 U.S.A.		1 OF 1		04/05/91	
2 PLACE	± .01	PART NO.		16-06-0038		DRWG. NO.	
1 PLACE	--- ± 0.25	DRAWING INFORMATION		THIS DRAWING CONTAINS INFORMATION THAT IS PROPRIETARY TO MOLEX INC. AND SHOULD NOT BE USED WITHOUT WRITTEN PERMISSION.		DIV.	SIZE
DRAFT WHERE APPLICABLE MUST REMAIN WITHIN DIMENSIONS		FILE NAME		SD603X1 DGN		CP	A
DRWG. BY	RW	CHK'D. BY	RW	NO P.S. 1			
APP'D. BY	GWF	SCALE	8: 1				

6 5 4 3 2 NO P.S. 1