

Excellent Integrated System Limited

Stocking Distributor

Click to view price, real time Inventory, Delivery & Lifecycle Information:

[Molex Connector Corporation](#)
[0018092803](#)

For any questions, you can email us directly:

sales@integrated-circuit.com

PART NO.	ENG. NO.	DIM. "A" Δ
18-09-2803	2282-(P90)I	
18-09-2804	2282-(P90)IIL	.161±.004/(4.09±0.10)
18-09-2807	2282-(P90)ILI	.215±.005/(5.46±0.13)
-	-	-
-	-	-

LEGEND

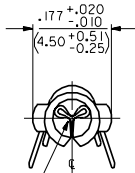
2282-(****)**

P=PREPLATE
BLANK=POSTPLATE

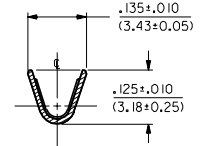
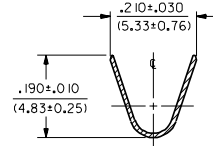
CARRIER CUTOFF WIDTH
(ONLY APPLIES TO FORM "L")
BLANK=.161±.004
I=.215±.005

FINISH CODE

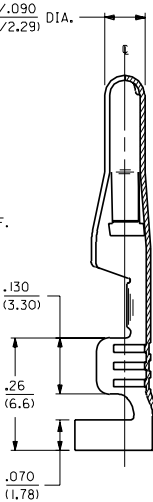
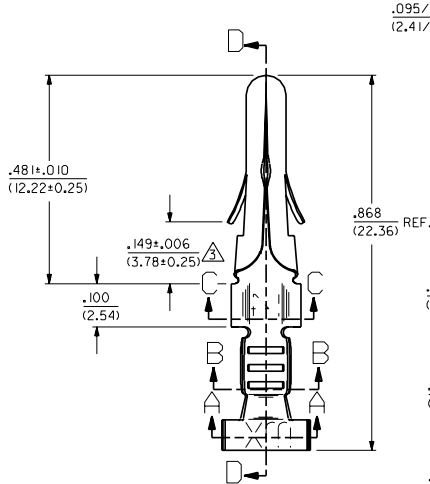
FORM
BLANK=CHAIN
L=LOOSE



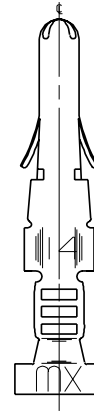
MAXIMUM DIA. OF .025/(0.64)
MUST NOT ENTER



SECTION A-A SECTION B-B



SECTION D-D

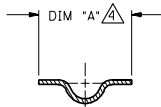


- NOTES:
- TERMINAL WILL ACCEPT 14 - 18 AWG WIRE.
 - TERMINAL FOR CHRYSLER CORP. USE ONLY.
- Δ WHERE DENOTED, THIS DIMENSION TO BE .140-.145/(3.56-3.68) WHEN LOCK TABS ARE COMPRESSED TO .136-.142/(3.92-4.10).
- Δ USE CRIMP DIE CD2052-C TO PRODUCE .161 CUT OFF AND CD2052-E TO PRODUCE .215 CUT OFF.

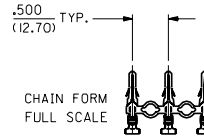
MATERIAL NOTES:

1. RED BRASS, ALLOY *C23000;
.010/(0.25) THICK, EXTRA SPRING TEMPER.

FINISH CODES:
901 HOT TIN DIP .000020/(0.0005) MIN.



SECTION C-C



CHAIN FORM
FULL SCALE

DIMENSIONS SHOWN METRIC INCH		UNLESS OTHERWISE SPECIFIED TOLERANCES APPLY IN INCH		MFG. SH.	REV.	L.T.R.	REVISIONS
3 PLACE	± .010	---	---	0	0		REVISE ONLY ON CAD SYSTEM
2 PLACE	± .014	± 0.25	---				
1 PLACE	---	± 0.36	---				
DRAFT WHEN APPLICABLE MUST REMAIN WITHIN DIMENSIONS							
TITLE CRIMP TERMINAL, MALE, .093/(2.36) DIA. FOR 14 THRU 18 AWG WIRE				REV'D. AND REDRAW EGR 11/10/97 CIC 10/13/92 RW			
MOLEX INCORPORATED				SHEET NO. DATE 1 of 1 10/13/92			
SEE CHART				PART NO. DRWG. NO. SD-2282-*			
DRG. BY: GWF				FILE NAME: SD2282X1			
DRG. CHKD. BY: RW				SCALE: 6:1			
APP'D. GWF				THIS DRAWING CONTAINS INFORMATION THAT IS PROPRIETARY TO MOLEX INC. AND SHOULD NOT BE USED WITHOUT WRITTEN PERMISSION. CP			