

Excellent Integrated System Limited

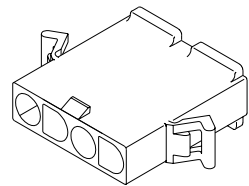
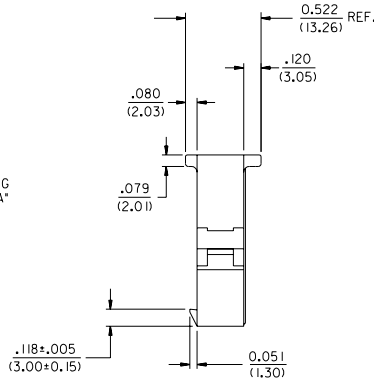
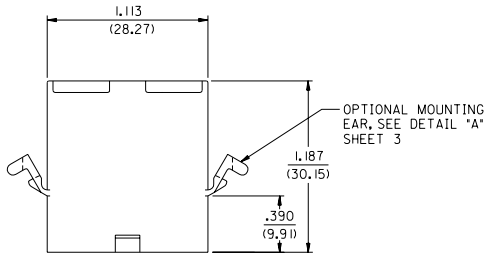
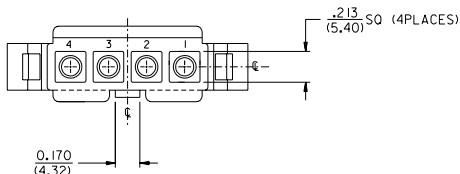
Stocking Distributor

Click to view price, real time Inventory, Delivery & Lifecycle Information:

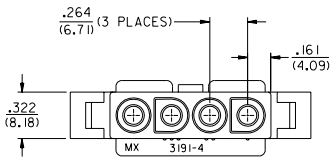
[Molex Connector Corporation](#)
[0019092046](#)

For any questions, you can email us directly:

sales@integrated-circuit.com



PLUG HOUSING



3	J3
2	J3
1	J3
SHT	REV
REVISE ON CAD ONLY	

REDRAWN ON CAD EC NO. UCR198-0254 DRAWN BY J. WANG 00/06/07 CHK. WIRKUS 00/06/07 APPR. REDCLEY 00/06/07	QUALITY SYMBOLS MAJOR $\nabla=0$ CRITICAL $\nabla=0$	GENERAL TOLERANCES: (UNLESS SPECIFIED) DIM INCH DIM M/M	SCALE 2:1 DESIGN UNITS <input type="checkbox"/> MM <input checked="" type="checkbox"/> INCH	THIRD ANGLE PROJECTION	DIMENSIONS: <input type="checkbox"/> MM <input checked="" type="checkbox"/> INCH <input type="checkbox"/> M/M ONLY	SHT REV REVISE ON CAD ONLY	
	DRAWN BY & DATE J. WANG 98/08/24	CHECKED BY & DATE WIRKUS 98/08/24	APPROVED BY & DATE R. EDGLEY 98/08/24	TITLE: .093/(2.36) HOUSINGS PLUG AND RECEPTACLE 4-CKTS, .264/(6.70) CTRS	MOLEX INCORPORATED	MATERIAL NO. SEE SHT. 3	DRAWING NO. SD -3191 -4*
	CAD FILENAME S319140.LDGN	ANGULAR $\neq 1^\circ$	DRAFT WHERE APPLICABLE MUST REMAIN WITHIN DIMENSIONS	THIS DRAWING CONTAINS INFORMATION THAT IS PROPRIETARY TO MOLEX INCORPORATED AND SHOULD NOT BE USED WITHOUT WRITTEN PERMISSION.	SHEET NO. 1 OF 3	SIZE C	
	J3	REV					

-PLUG	
PART NO.	ENG. NO.
19-09-2048	3191-4P
19-09-2049	3191-4P1
19-09-2047	3191-4P-A
19-09-2046	3191-4P1-A

RECEPTACLE	
PART NO.	ENG. NO.
19-09-1049	3191-4R1
19-09-1046	3191-4R1-A

LEGEND

3191-4****-*

CIRCUIT SIZE

P = PLUG
R = RECEPTACLE

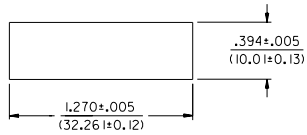
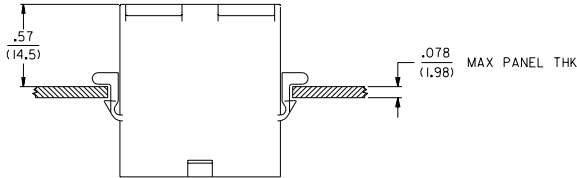
EARS: BLANK = WITH PREBENT EARS (PLUG ONLY)
I = WITHOUT EARS

COLOR: BLANK = NATURAL COLOR

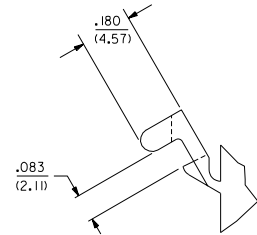
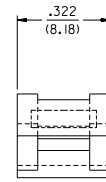
AM=AMBER BK=BLACK BU=BLUE
BN=BROWN GY=GRAY GN=GREEN
OR=ORANGE RD=RED YW=YELLOW

COLORS AVAILABLE ONLY IN 94V-2 MATERIAL

MATERIAL: BLANK=NYLON TYPE 6/6, 94V-2 COLOR:NATURAL
A=NYLON TYPE 6/6, 94V-0 COLOR:WHITE



RECOMMENDED HOLE CUTOUT



DETAIL "A"
.093/(2.36) PREBENT MOUNTING EAR
(SCALE 4:1)

EC NO. UCR1988-0254 DRAWN BY J.WANG 00/06/07 CHK. B.WIRKJUS 00/06/07 APPR. R.EDGLEY 00/06/07	QUALITY SYMBOLS MAJOR ∇=0 CRITICAL ∇=0	GENERAL TOLERANCES: (UNLESS SPECIFIED) 4 PLACES ±0.--- ±.--- 3 PLACES ±0.--- ±.010 2 PLACES ±0.25 ±.015 1 PLACE ±0.38 ±.--- ANGULAR: ±1 °	SCALE 2 : 1 DESIGN UNITS <input type="checkbox"/> mm <input checked="" type="checkbox"/> INCH	DRAWN BY & DATE J.WANG 98/08/18 CHECKED BY & DATE B.WIRKJUS 98/08/18 APPROVED BY & DATE R.EDGLEY 98/08/18	DIMENSIONS: <input type="checkbox"/> mm <input checked="" type="checkbox"/> INCH <input type="checkbox"/> mm ONLY	SHT 3 REV REVISE ON CAD ONLY	
	TITLE: .093/(2.36) HOUSINGS PLUG AND RECEPTACLE 4-CKTS, .264/(6.70) CTRS	MOLEX INCORPORATED		CAD FILENAME S3191403.DGN	MATERIAL NO. SEE SHT.3	DRAWING NO. SD -3191-4*	SHEET NO. 3
	DRAFT WHERE APPLICABLE MUST REMAIN WITHIN DIMENSIONS	THIS DRAWING CONTAINS INFORMATION THAT IS PROPRIETARY TO MOLEX INCORPORATED AND SHOULD NOT BE USED WITHOUT WRITTEN PERMISSION.		SIZE C		REV 3	