

Excellent Integrated System Limited

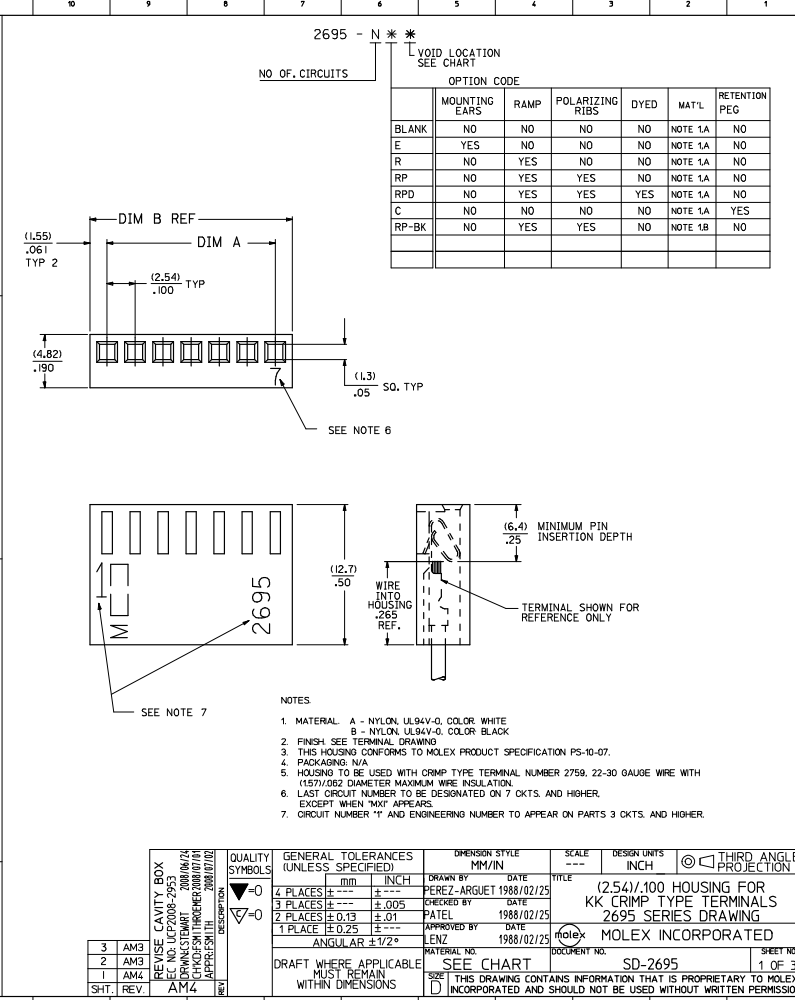
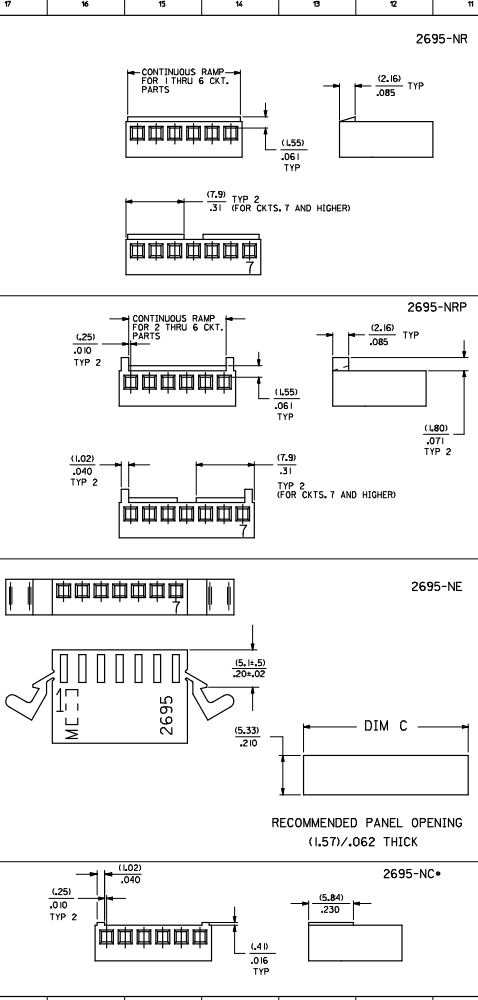
Stocking Distributor

Click to view price, real time Inventory, Delivery & Lifecycle Information:

[Molex Connector Corporation](#)
[0022012022](#)

For any questions, you can email us directly:
sales@integrated-circuit.com

NO. OF CKT'S.	DIM. A	DIM. B	DIM. C
1	N/A	(3.10)	(7.16)
2	(2.54+.05)	(5.64)	(9.70)
3	(5.08+.05)	(8.18)	(12.24)
4	(7.62+.05)	(10.72)	(14.78)
5	(10.16+.05)	(13.26)	(17.32)
6	(12.70+.05)	(15.80)	(19.86)
7	(15.24+.08)	(18.34)	(22.40)
8	(17.78+.08)	(20.88)	(24.94)
9	(20.32+.10)	(23.42)	(27.48)
10	(22.86+.10)	(25.96)	(30.02)
11	(25.40+.10)	(28.50)	(32.56)
12	(27.94+.13)	(31.04)	(35.10)
13	(30.48+.13)	(33.58)	(37.64)
14	(33.02+.13)	(36.12)	(40.18)
15	(35.56+.13)	(38.66)	(42.72)
16	(38.10+.15)	(41.20)	(45.26)
17	(40.64+.15)	(43.74)	(47.80)
18	(43.18+.15)	(46.28)	(50.34)
19	(45.72+.15)	(48.82)	(52.88)
20	(48.26+.15)	(51.36)	(55.42)
21	(50.80+.15)	(53.90)	(57.96)
22	(53.34+.18)	(56.44)	(60.50)
23	(55.88+.18)	(58.98)	(63.04)
24	(58.42+.18)	(61.52)	(65.58)
25	(60.96+.20)	(64.06)	(68.12)
26	(63.50+.20)	(66.60)	(70.66)
27	(66.04+.20)	(69.14)	(73.20)
28	(68.58+.20)	(71.68)	(75.74)
29	(71.12+.23)	(74.22)	(78.28)
30	(73.66+.23)	(76.76)	(80.82)
31	(76.20+.23)	(79.30)	(83.36)
32	(78.74+.23)	(81.84)	(85.90)
33	(81.28+.25)	(84.38)	(88.44)
34	(83.82+.25)	(86.92)	(90.98)
35	(86.36+.25)	(89.46)	(93.52)
36	(88.90+.25)	(92.00)	(96.06)
37	(91.44+.28)	(94.54)	(98.60)
38	(93.98+.28)	(97.08)	(101.14)
39	(96.52+.28)	(99.62)	(103.68)
40	(99.06+.28)	(102.16)	(106.22)
41	(3.90+.011)	4.022	4.82



	MOUNTING EARS	RAMP	POLARIZING RIBS	DYED	MAT'L	RETENTION PEG
BLANK	NO	NO	NO	NO	NOTE 1A	NO
E	YES	NO	NO	NO	NOTE 1A	NO
R	NO	YES	NO	NO	NOTE 1A	NO
RP	NO	YES	YES	NO	NOTE 1A	NO
RPD	NO	YES	YES	YES	NOTE 1A	NO
C	NO	NO	NO	NO	NOTE 1A	YES
RP-BK	NO	YES	YES	NO	NOTE 1B	NO

NOTES

- MATERIAL: A - NYLON UL94V-0, COLOR WHITE; B - NYLON UL94V-0, COLOR BLACK
- FINISH: SEE TERMINAL DRAWING
- THIS HOUSING CONFORMS TO MOLEX PRODUCT SPECIFICATION PS-10-07.
- PACKAGING: N/A
- HOUSING TO BE USED WITH CRIMP TYPE TERMINAL NUMBER 2759, 22-30 GAUGE WIRE WITH (157)/.062 DIAMETER MAXIMUM WIRE INSULATION
- LAST CIRCUIT NUMBER TO BE DESIGNATED ON 7 CKTS. AND HIGHER. EXCEPT WHEN "MKT" APPEARS.
- CIRCUIT NUMBER "Y" AND ENGINEERING NUMBER TO APPEAR ON PARTS 3 CKTS. AND HIGHER.

QUALITY SYMBOLS	GENERAL TOLERANCES (UNLESS SPECIFIED)	DIMENSION STYLE	SCALE	DESIGN UNITS	THIRD ANGLE PROJECTION
4 PLACES ±.10	mm	MM/IN	---	INCH	
3 PLACES ±.05	INCH				
2 PLACES ±0.13 ±.01					
1 PLACE ±0.25 ±.01					
	ANGULAR ±1/2°				

REV	DATE	BY	CHKD	APP'D	DESCRIPTION
3	AM3				REVERSE CAVITY BOX
2	AM3				REV. NO. LEP(2009-295)
1	AM4				DOWNALSTEWART 2008/06/24
					CHICKENSHIRKER 2008/07/04
					ALPHESS 2008/07/06

DRAWN BY	DATE	TITLE
PEREZ-ARGUET	1988/02/25	(2.54)/.100 HOUSING FOR KK CRIMP TYPE TERMINALS 2695 SERIES DRAWING
CHECKED BY	DATE	
PATEL	1988/02/25	
APPROVED BY	DATE	
LENZ	1988/02/25	

DRAFT WHERE APPLICABLE MUST REMAIN WITHIN DIMENSIONS	SEE CHART	INCORPORATED AND SHOULD NOT BE USED WITHOUT WRITTEN PERMISSION

MATERIAL NO.	DRAWING NO.	DOCUMENT NO.	SHEET NO.
	SD-2695		1 OF 3

By: James, D. P. Rev. E 2006/04/15

	2695-N			2695-NE			2695-NR			2695-NRP			2695-NRPD			2695-NRP-BK		
	PART NO.	ENG NO.	VOID	PART NO.	ENG NO.	VOID	PART NO.	ENG NO.	VOID	PART NO.	ENG NO.	VOID	PART NO.	ENG NO.	VOID	PART NO.	ENG NO.	VOID
H	22-01-2011	2695-1		22-01-2022	2695-2E		22-01-2027	2695-2R		22-01-3027	2695-2RP		N/A	2695-2RPD		50-29-1557	2695-2RP-BK	
	22-01-2021	2695-2		22-01-2032	2695-3E		22-01-2037	2695-3R		22-01-3037	2695-3RP			2695-3RPD		50-29-1558	2695-3RP-BK	
	22-01-2031	2695-3														50-29-1559	2695-4RP-BK	
	22-01-2041	2695-4														50-29-1560	2695-5RP-BK	
L	22-01-2051	2695-5											22-32-2051	2695-5RPD		50-29-1561	2695-6RP-BK	
	22-01-2061	2695-6														50-29-1562	2695-7RP-BK	
	22-01-2071	2695-7		22-01-2072	2695-7E		22-01-2077	2695-7R		22-01-3077	2695-7RP			2695-7RPD		50-29-1563	2695-8RP-BK	
	22-01-2081	2695-8														50-29-1564	2695-9RP-BK	
	22-01-2091	2695-9														50-29-1565	2695-10RP-BK	
	22-01-2101	2695-10											22-32-2101	2695-10RPD		50-29-1566	2695-11RP-BK	
	22-01-2111	2695-11														50-29-1567	2695-12RP-BK	
K	22-01-2121	2695-12														50-29-1568	2695-13RP-BK	
	22-01-2131	2695-13														50-29-1569	2695-14RP-BK	
	22-01-2141	2695-14														50-29-1570	2695-15RP-BK	
	22-01-2151	2695-15														50-29-1571	2695-16RP-BK	
	22-01-2161	2695-16														50-29-1572	2695-17RP-BK	
	22-01-2171	2695-17														50-29-1573	2695-18RP-BK	
	22-01-2181	2695-18														50-29-1574	2695-19RP-BK	
	22-01-2191	2695-19														50-29-1575	2695-20RP-BK	
J	22-01-2201	2695-20														50-29-1576	2695-21RP-BK	
	22-01-2211	2695-21														50-29-1577	2695-22RP-BK	
	22-01-2221	2695-22														50-29-1578	2695-23RP-BK	
	22-01-2231	2695-23														50-29-1579	2695-24RP-BK	
	22-01-2241	2695-24														50-29-1580	2695-25RP-BK	
	22-01-2251	2695-25														50-29-1581	2695-26RP-BK	
I	22-01-2261	2695-26														50-29-1582	2695-27RP-BK	
	22-01-2271	2695-27														50-29-1583	2695-28RP-BK	
	22-01-2281	2695-28																
	22-01-2291	2695-29																
	22-01-2301	2695-30																
	22-01-2311	2695-31																
H	22-01-2331	2695-32					22-01-2337	2695-32R										
		2695-33						2695-33R										
		2695-34						2695-34R										
		2695-35						2695-35R										
		2695-36						2695-36R										
		2695-37						2695-37R										
		2695-38						2695-38R										
		2695-39						2695-39R										
		2695-40						2695-40R										
							22-01-2062	2695-06R-5	5				22-01-5102	2695-10RP-2	2			
													22-01-5044	2695-4RP-3	3			
													22-01-5103	2695-10RP-3	3			
													22-01-5111	2695-11RP-5	5			
													22-01-5104	2695-10RP-3	3			

ADD N/A 22-01-2032 2006/11/04 APPROVED BY DATE 2006/11/04 DESCRIPTION AM3	QUALITY SYMBOLS	GENERAL TOLERANCES (UNLESS SPECIFIED)	DIMENSION STYLE	SCALE	DESIGN UNITS	THIRD ANGLE PROJECTION
	4 PLACES ± --- ± --- 3 PLACES ± --- ± --- 2 PLACES ± --- ± --- 1 PLACE ± --- ± --- ANGULAR ±1/2°	MILL INCH PEREZ-ARGUET 1988/02/25 DATE PATEL 1988/02/25 DATE APPROVED BY DATE 1988/02/25 MOLEX	(2.54)/.100 HOUSING FOR KK CRIMP TYPE TERMINALS 2695 SERIES DRAWING MOLEX INCORPORATED	MM/IN	---	INCH
DRAFT WHERE APPLICABLE MUST REMAIN WITH DIMENSIONS		SEE CHART		DOCUMENT NO. SD-2695		SHEET NO. 2 OF 3
THIS DRAWING CONTAINS INFORMATION THAT IS PROPRIETARY TO MOLEX INCORPORATED AND SHOULD NOT BE USED WITHOUT WRITTEN PERMISSION						

2695-NC*																			
PART NO.	ENG. NO.	VOIDS		PART NO.	ENG. NO.	VOIDS		PART NO.	ENG. NO.	VOIDS		PART NO.	ENG. NO.	VOIDS		PART NO.	ENG. NO.	VOIDS	
N/A	2695-1C																		
	2695-2C																		
	2695-3C																		
	2695-4C																		
	2695-5C																		
	2695-6C																		
	2695-7C																		
	2695-8C																		
	2695-9C																		
	2695-10C																		
	2695-11C																		
	2695-12C																		
	2695-13C																		
	2695-14C																		
	2695-15C																		
	2695-16C																		
	2695-17C																		
	2695-18C																		
	2695-19C																		
	2695-20C																		
	2695-21C																		
	2695-22C																		
	2695-23C																		
	2695-24C																		
	2695-25C																		
	2695-26C																		
	2695-27C																		
	2695-28C																		
	2695-29C																		
	2695-30C																		
	2695-31C																		
	2695-32C																		
	2695-33C																		
	2695-34C																		
	2695-35C																		
	2695-36C																		
	2695-37C																		
	2695-38C																		
	2695-39C																		
	2695-40C																		

UPDATE TITLE BLOCK EIC NO. UCF2006-1024 DRAWN BY: AM3 CHECKED BY: AM3 APPROVED BY: AM3 DATE: 2006/11/02	QUALITY SYMBOLS 	GENERAL TOLERANCES (UNLESS SPECIFIED)		DIMENSION STYLE MM/IN	SCALE ---	DESIGN UNITS INCH	THIRD ANGLE PROJECTION
		4 PLACES ± --- ± --- 3 PLACES ± --- ± --- 2 PLACES ± --- ± --- 1 PLACE ± --- ± ---	TITL INCH INCH	DRAWN BY: SAM IEC DATE: 1989/10/30 CHECKED BY: DAYE DATE: 1989/10/30 APPROVED BY: DAYE DATE: 1989/10/30	TITLE (2.54)/.100 HOUSING FOR KK CRIMP TYPE TERMINALS 2695 SERIES DRAWING		
		ANGULAR ±1/2°	MATERIAL NO. SEE CHART	DOCUMENT NO. SD-2695	SHEET NO. 3 OF 3		
		DRAFT WHERE APPLICABLE MUST REMAIN WITHIN DIMENSIONS	SEE THIS DRAWING CONTAINS INFORMATION THAT IS PROPRIETARY TO MOLEX INCORPORATED AND SHOULD NOT BE USED WITHOUT WRITTEN PERMISSION				