

Excellent Integrated System Limited

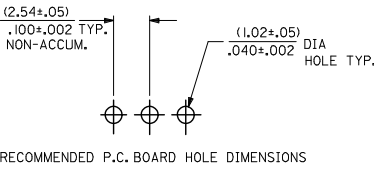
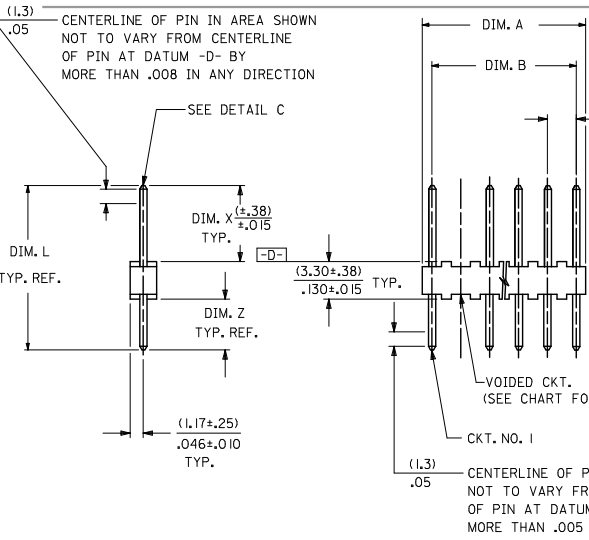
Stocking Distributor

Click to view price, real time Inventory, Delivery & Lifecycle Information:

[Molex Connector Corporation](#)
[0022042041](#)

For any questions, you can email us directly:

sales@integrated-circuit.com



LEGEND

A-4380-N * * * * *

NO. OF CKTS. * * * * *

VOID LOCATION

NO VOID = SEE 4030 SERIES DWG. WITH VOIDS = NO. CORRESPONDS TO CKT. NO. VOIDED. MULT. VOIDS = START WITH 51 AND ARE ASSIGNED CONSECUTIVELY.

SECONDARY OPERATIONS	
CODE	PACKAGE
BLANK	BULK
	PER PK-4030-001

VERSION LETTER CHANGES WHEN PIN NO. OR PRESS DIM. CHANGES.

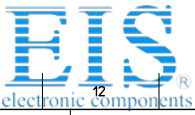
PLATING CODE PER SDES-88.

- NOTES:
- MATERIAL: NYLON, UL 94V-0, COLOR: WHITE
 - FINISH:
 - (197) OVERALL REFLOWED MATTE TIN: 0.00152/.000060 MIN. OVER 0.00127/.000050 MIN. NICKEL OVERALL.
 - (241) SELECT GOLD: 0.00051/.000020 MIN. SELECT TIN: 0.00254/.000100 MIN. OVERALL NICKEL UNDERPLATE: 0.00127/.000050 MIN.
 - PARTS CONFORM TO PRODUCT SPECIFICATION PS-10-07.
 - PACKAGING: SEE LEGEND
 - PINS MUST CONFORM TO SOLDERABILITY SPEC. SMES-152.
 - PIN PUSH OUT FORCE: 2 LBS. MIN.
 - PARTS ARE STACKABLE END TO END AND SIDE TO SIDE ON (2.54)/.100 CENTERS.
 - THIS PART CONFORMS TO CLASS B REQUIREMENTS OF COSMETIC SPECIFICATION PS-45499-002.

CKTS. NO. OF	DIM. B	DIM. A
2	(2.54 ± .05)	(4.83 ± .20)
	.100 ± .002	.190 ± .008
3	(5.08 ± .15)	(7.37 ± .20)
	.200 ± .005	.290 ± .008
4	(7.62 ± .15)	(9.91 ± .20)
	.300 ± .005	.390 ± .008
5	(10.16 ± .15)	(12.45 ± .20)
	.400 ± .005	.490 ± .008
6	(12.70 ± .15)	(14.99 ± .23)
	.500 ± .006	.590 ± .009
7	(15.24 ± .15)	(17.53 ± .23)
	.600 ± .006	.690 ± .009
8	(17.78 ± .15)	(20.07 ± .23)
	.700 ± .006	.790 ± .009
9	(20.32 ± .18)	(22.61 ± .25)
	.800 ± .007	.890 ± .010
10	(22.86 ± .18)	(25.15 ± .25)
	.900 ± .007	.990 ± .010
11	(25.40 ± .18)	(27.69 ± .25)
	1.000 ± .007	1.090 ± .010
12	(27.94 ± .20)	(30.23 ± .28)
	1.100 ± .008	1.190 ± .011
13	(30.48 ± .20)	(32.77 ± .28)
	1.200 ± .008	1.290 ± .011
14	(33.02 ± .20)	(35.31 ± .28)
	1.300 ± .008	1.390 ± .011
15	(35.56 ± .20)	(37.85 ± .28)
	1.400 ± .008	1.490 ± .011
16	(38.10 ± .20)	(40.39 ± .28)
	1.500 ± .008	1.590 ± .011

REINSTATE 22112071	QUALITY SYMBOLS
REC NO: UCP2015-3608	▽=0
DRW:KTP/PER 2015/03/04	▽=0
CHK:KONG/VEN 2015/03/04	▽=0
APP:CSM/TH 2015/03/10	
ZAS	REV

GENERAL TOLERANCES (UNLESS SPECIFIED)		DIMENSION STYLE		SCALE	DESIGN UNITS	THIRD ANGLE PROJECTION
mm	INCH	MM/IN	DATE	---	INCH	☉
4 PLACES ± ---	± ---	DRAWN BY	1984/09/07	TITLE		
3 PLACES ± ---	± .010	CHECKED BY	DATE	KK HEADER (2.54)/.100 CENTERS 4030 WITH VOIDS		
2 PLACES ± 0.25	± .014	DS	1984/09/07			
1 PLACE ± 0.36	± ---	APPROVED BY	DATE	molex		
0 PLACE ±	±	KJA	1984/09/07			
ANGULAR ± 1/2°		MATERIAL NO.	DOCUMENT NO.	SHEET NO.		
DRAFT WHERE APPLICABLE MUST REMAIN WITHIN DIMENSIONS		SEE CHART	SDA-4380	1 OF 3		
THIS DRAWING CONTAINS INFORMATION THAT IS PROPRIETARY TO MOLEX INCORPORATED AND SHOULD NOT BE USED WITHOUT WRITTEN PERMISSION						



ENG. NO.	PIN NO.	DIM. L	DIM. X	DIM. Z	DIM. G	DIM. T
A-4380-NA197-*	42663-0302	(14.22) .560	(7.49) .295	(3.43) .135	N/A	OVERALL
A-4380-NA241-*	42663-0305	(14.22) .560	(7.49) .295	(3.43) .135	(3.56) .140	(3.43) .135
A-4380-NC197-*	42663-0562	(17.53) .690	(11.13) .438	(3.10) .122	N/A	OVERALL

CHANGE PIN EC NO: UCP2072-1621 DRAWN BY: CHRODRIKER APPROVED BY: APPRENTICE DATE: 2017/01/23 DATE: 2017/01/23 DATE: 2017/02/02 Z A REV	QUALITY SYMBOLS	GENERAL TOLERANCES (UNLESS SPECIFIED)	DIMENSION STYLE	SCALE	DESIGN UNITS	THIRD ANGLE PROJECTION
	▽=0	mm INCH	MM/IN	---	INCH	
	▽=0	4 PLACES ± --- ± ---	DRAWN BY DATE			TITLE
	▽=0	3 PLACES ± --- ± ---	SAMIEC 1984/09/07			KK HEADER (2.54)/.100 CENTERS 4030 WITH VOIDS
	2 PLACES ± --- ± ---	CHECKED BY DATE				
	1 PLACE ± --- ± ---	DS 1984/09/07				
	ANGULAR ± 1/2°	APPROVED BY DATE				
		KJA 1984/09/07				
	DRAFT WHERE APPLICABLE MUST REMAIN WITHIN DIMENSIONS	MATERIAL NO.				
		SEE CHART				
		SIZE C				
		THIS DRAWING CONTAINS INFORMATION THAT IS PROPRIETARY TO MOLEX INCORPORATED AND SHOULD NOT BE USED WITHOUT WRITTEN PERMISSION				
					DOCUMENT NO.	SHEET NO.
					MOLEX MOLEX INCORPORATED	2 OF 3
					SDA-4380	



A-4380-NA197-*		
PART NO.	ENG. NO.	VOID CKT.
22-04-2038	A-4380-3A197-2	2
22-04-2041	A-4380-4A197-2	2
22-04-2161	A-4380-16A197-2	2

A-4380-NA241-*		
PART NO.	ENG. NO.	VOID CKT.
22-11-2031	A-4380-3A241-1	1
22-11-2061	A-4380-6A241-2	2
22-11-2071	A-4380-7A241-2	2
22-11-2081	A-4380-8A241-2	2

A-4380-NC197-*		
PART NO.	ENG. NO.	VOID CKT.
22-04-2063	A-4380-6C197-2	2
22-04-2073	A-4380-7C197-2	2

SEE SHEET 1 REC NO: UCP2015-3608 DRAWN BY: 2015/03/04 CHK'D BY: 2015/03/04 APPROVED BY: 2015/03/10 ZAS REV	QUALITY SYMBOLS	GENERAL TOLERANCES (UNLESS SPECIFIED)	DIMENSION STYLE	SCALE	DESIGN UNITS	THIRD ANGLE PROJECTION
	▽=0	mm INCH	IN/MM	---	INCH	☉
	▽=0	4 PLACES ± --- ± ---	DRAWN BY DATE	---	---	---
	▽=0	3 PLACES ± --- ± ---	KKS 1984/09/07	---	---	---
	2 PLACES ± --- ± ---	CHECKED BY DATE	---	---	---	KK HEADER (2.54)/.100 CENTERS 4030 WITH VOIDS molex
	1 PLACE ± --- ± ---	DS 1984/09/07	---	---	---	
	0 PLACE ± --- ± ---	APPROVED BY DATE	---	---	---	MATERIAL NO. DOCUMENT NO. SHEET NO. SEE CHART SDA-4380 3 OF 3
	ANGULAR ±1/2°	DRAFT WHERE APPLICABLE MUST REMAIN WITHIN DIMENSIONS				
	SIZE C	THIS DRAWING CONTAINS INFORMATION THAT IS PROPRIETARY TO MOLEX INCORPORATED AND SHOULD NOT BE USED WITHOUT WRITTEN PERMISSION				