

Excellent Integrated System Limited

Stocking Distributor

Click to view price, real time Inventory, Delivery & Lifecycle Information:

[Molex Connector Corporation](#)
[0022233044](#)

For any questions, you can email us directly:

sales@integrated-circuit.com

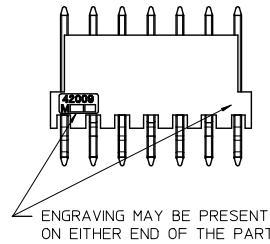
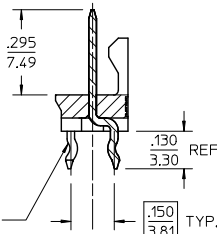
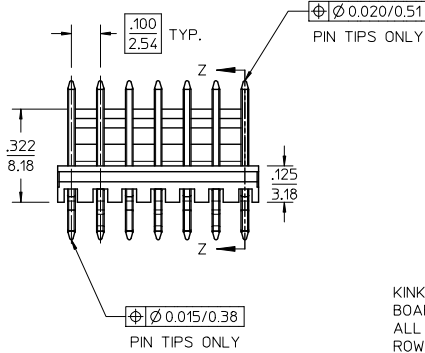
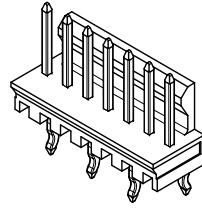
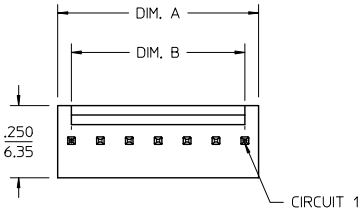
NOTES

- MATERIAL: WAFER - GLASS FILLED POLYESTER, UL94 V-0, COLOR: NATURAL (WHITE)
PIN - BRASS
- FINISH: OVERALL REFLOWED MATTE TIN: .000060/0.00152 MIN. OVER .000050/0.00127 MIN. NICKEL
- PRODUCT SPECIFICATION: PS-10-07
- BULK PACK PER PK-43009-001
- THIS PART CONFORMS TO CLASS B REQUIREMENTS OF COSMETIC SPECIFICATION PS-45499-002.
- ENGRAVING LOCATION IS DETERMINED BY TOOLING AND WILL BE PRESENT AT EITHER LOCATION SHOWN.

ENG. NO. DESIGNATION:

A-42009- N - **
CKT. SIZE

VOID PIN DESIGNATION
A= #1 PIN
B= #2 PIN
C= #3 PIN
ECT.



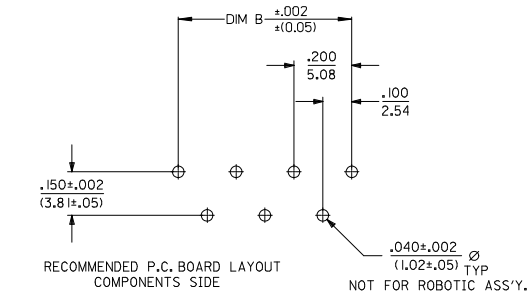
KINKED PINS FOR P.C. BOARD RETENTION- ALL PINS KINKED, TWO ROWS OPPOSING EACH OTHER

SECTION Z-Z



ALTERNATE ENGRAVING LOCATION
SEE NOTE 6

10	.995/(25.27)	.900/(22.86)
9	.895/(22.73)	.800/(20.32)
8	.795/(20.19)	.700/(17.78)
7	.695/(17.65)	.600/(15.24)
6	.595/(15.11)	.500/(12.70)
5	.495/(12.57)	.400/(10.16)
4	.395/(10.03)	.300/(7.62)
3	.295/(7.49)	.200/(5.08)
2	.195/(4.95)	.100/(2.54)
CKT. SIZE	DIM A	DIM B



REDRAWN ENGRAVING EC NO: UCPE2015-3460 DRAWN BY: 2013/04/11 CHKD/ANP/PERSON: 2013/04/11 APPROVE/SMITH: 2014/01/13	QUALITY SYMBOLS ✓=0 △=0 ▽=0	GENERAL TOLERANCES (UNLESS SPECIFIED)		DIMENSION STYLE IN/MM		SCALE 4:1	DESIGN UNITS INCH	THIRD ANGLE PROJECTION	
		4 PLACES ± ---	± ---	DRAWN BY EDGLEY	DATE 1986/11/29	TITLE			
		3 PLACES ± ---	± .010	CHECKED BY EDGLEY	DATE 1986/11/29	WAFER, FRICTION LOCK ASSEMBLY			
		2 PLACES ± 0.25	± .014	APPROVED BY F SMITH	DATE 2014/01/13				
1 PLACE ± 0.36	± ---	ANGULAR ± 1/2°		MATERIAL NO.	DOCUMENT NO.	SHEET NO.			
0 PLACE ± ---	± ---	DRAFT WHERE APPLICABLE MUST REMAIN WITHIN DIMENSIONS		SIZE C	THIS DRAWING CONTAINS INFORMATION THAT IS PROPRIETARY TO MOLEX INCORPORATED AND SHOULD NOT BE USED WITHOUT WRITTEN PERMISSION			1 OF 2	

