

Excellent Integrated System Limited

Stocking Distributor

Click to view price, real time Inventory, Delivery & Lifecycle Information:

[Molex Connector Corporation](#)
[0022233104](#)

For any questions, you can email us directly:

sales@integrated-circuit.com

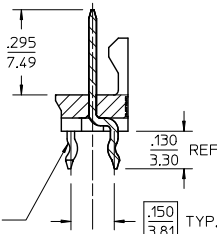
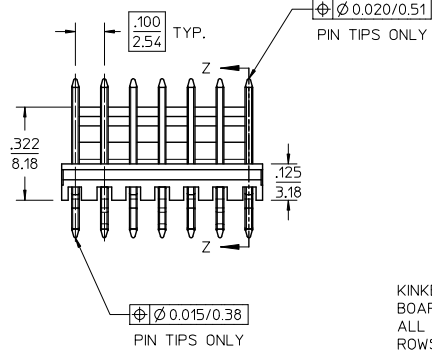
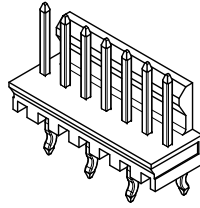
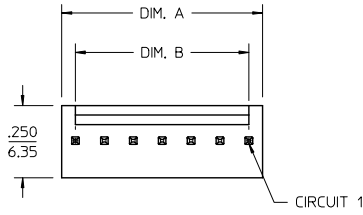
NOTES

1. MATERIAL: WAFER - GLASS FILLED POLYESTER, UL94 V-0, COLOR: NATURAL (WHITE)
PIN - BRASS
2. FINISH: OVERALL REFLOWED MATTE TIN: .000060/0.00152 MIN. OVER .000050/0.00127 MIN. NICKEL
3. PRODUCT SPECIFICATION: PS-10-07
4. BULK PACK PER PK-43009-001
5. THIS PART CONFORMS TO CLASS B REQUIREMENTS OF COSMETIC SPECIFICATION PS-45499-002.
6. ENGRAVING LOCATION IS DETERMINED BY TOOLING AND WILL BE PRESENT AT EITHER LOCATION SHOWN.

ENG. NO. DESIGNATION:

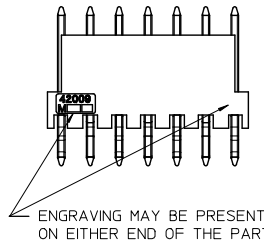
A-42009- N - **
CKT. SIZE

VOID PIN DESIGNATION
A= #1 PIN
B= #2 PIN
C= #3 PIN
ECT.

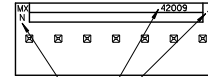
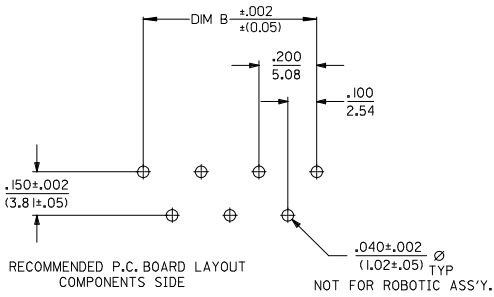
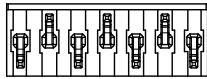


KINKED PINS FOR P.C. BOARD RETENTION- ALL PINS KINKED, TWO ROWS OPPOSING EACH OTHER

SECTION Z-Z



ENGRAVING MAY BE PRESENT ON EITHER END OF THE PART



ALTERNATE ENGRAVING LOCATION SEE NOTE 6


10	.995/(25.27)	.900/(22.86)
9	.895/(22.73)	.800/(20.32)
8	.795/(20.19)	.700/(17.78)
7	.695/(17.65)	.600/(15.24)
6	.595/(15.11)	.500/(12.70)
5	.495/(12.57)	.400/(10.16)
4	.395/(10.03)	.300/(7.62)
3	.295/(7.49)	.200/(5.08)
2	.195/(4.95)	.100/(2.54)
CKT. SIZE	DIM A	DIM B

REDRAWN ENGRAVING EC NO: UCPE2015-3460 DRAWN BY: 2013/04/11 CHKD BY: 2013/04/11 APPROVED BY: 2014/01/13	QUALITY SYMBOLS ✓=0 △=0 ▽=0	GENERAL TOLERANCES (UNLESS SPECIFIED)		DIMENSION STYLE IN/MM		SCALE 4:1	DESIGN UNITS INCH	THIRD ANGLE PROJECTION		
		4 PLACES ± --- ± --- 3 PLACES ± --- ± .010 2 PLACES ± 0.25 ± .014 1 PLACE ± 0.36 ± --- 0 PLACE ± --- ± ---		DRAWN BY: EDGLEY DATE: 1986/11/29		CHECKED BY: EDGLEY DATE: 1986/11/29		TITLE: WAFER, FRICTION LOCK ASSEMBLY		
		ANGULAR ± 1/2° DRAFT WHERE APPLICABLE MUST REMAIN WITHIN DIMENSIONS		APPROVED BY: F SMITH DATE: 2014/01/13		MATERIAL NO. SEE CHART		DOCUMENT NO. SDA-42009-*		SHEET NO. 1 OF 2
		THIS DRAWING CONTAINS INFORMATION THAT IS PROPRIETARY TO MOLEX INCORPORATED AND SHOULD NOT BE USED WITHOUT WRITTEN PERMISSION								

A-42009-N

PART NO.	ENG. NO	VOID CKT.
22-23-3024	A-42009-2	NONE
22-23-3034	A-42009-3	NONE
22-23-3044	A-42009-4	NONE
22-23-3054	A-42009-5	NONE
22-23-3064	A-42009-6	NONE
22-23-3074	A-42009-7	NONE
22-23-3084	A-42009-8	NONE
22-23-3094	A-42009-9	NONE
22-23-3104	A-42009-10	NONE
22-46-4041	A-42009-4-B	2
22-46-4042	A-42009-4-C	3
22-46-4052	A-42009-5-B	2
22-46-4053	A-42009-5-C	3
22-46-4050	A-42009-5-D	4
22-46-4051	A-42009-5-E	5
22-46-4064	A-42009-6-B	2
	A-42009-6-BC	2,3
22-46-4068	A-42009-6-D	4
22-46-4065	A-42009-6-E	5
22-46-4069	A-42009-6-F	6
22-46-4072	A-42009-7-E	5
22-46-4080	A-42009-8-D	4
22-46-4081	A-42009-8-E	5
22-46-4031	A-42009-3-C	3
22-46-4063	A-42009-6-DE	4,5
22-46-4062	A-42009-6-CF	3,6
22-46-4061	A-42009-6-BD	2,4
22-46-4030	A-42009-3-B	2
22-46-4066	A-42009-6-C	3
22-46-4071	A-42009-7-D	4
22-46-4067	A-42009-6-CE	3,5
22-46-4074	A-42009-7-C	3
22-46-4075	A-42009-7-F	6
22-46-4073	A-42009-7-B	2
22-46-4082	A-42009-8-H	8
22-46-4083	A-42009-8-F	6
22-46-4101	A-42009-10-I	9
22-46-4100	A-42009-10-B	2
22-46-4043	A-42009-4-D	4
22-46-4060	A-42009-6-BE	2,5
COLUMN NO. I	CON'T. IN COLUMN NO.	SHEET NO.

ENG. NO. DESIGNATION:
A-42009-N - **
CKT. SIZE \square J \square \square VOID PIN DESIGNATION
A = #1 PIN
B = #2 PIN
C = #3 PIN
ECT.

REDRAWN EC NO: UCP2013-3460 DRAWN/CHKDR/APPR: KIPPER / CHKOBANDERSON / APPRCSMITH DATE: 2013/04/11 / 2013/04/11 / 2014/01/13 DESCRIPTION:	QUALITY SYMBOLS $\nabla=0$ $\nabla=0$ $\nabla=0$	GENERAL TOLERANCES (UNLESS SPECIFIED)		DIMENSION STYLE IN/MM		SCALE ---	DESIGN UNITS INCH	THIRD ANGLE PROJECTION	
		4 PLACES ± --- ± ---	EDGLEY	DATE 1986/11/29		TITLE WAFER, FRICTION LOCK ASSEMBLY 			
		3 PLACES ± --- ± .010	CHECKED BY	DATE 1986/11/29					
		2 PLACES ± 0.25 ± .014	EDGLEY	DATE 1986/11/29					
		1 PLACE ± 0.36 ± ---	APPROVED BY	DATE 2014/01/13					
0 PLACE ± --- ± ---	FSMITH								
ANGULAR ±1/2°			MATERIAL NO.	DOCUMENT NO.			SHEET NO.		
DRAFT WHERE APPLICABLE MUST REMAIN WITHIN DIMENSIONS			SEE CHART		SDA-42009-*			2 OF 2	
THIS DRAWING CONTAINS INFORMATION THAT IS PROPRIETARY TO MOLEX INCORPORATED AND SHOULD NOT BE USED WITHOUT WRITTEN PERMISSION									