

## Excellent Integrated System Limited

Stocking Distributor

Click to view price, real time Inventory, Delivery & Lifecycle Information:

[Molex Connector Corporation](#)  
[0022283063](#)

For any questions, you can email us directly:

[sales@integrated-circuit.com](mailto:sales@integrated-circuit.com)

| NO. OF CKTS. | DIM. A      | DIM. B      |
|--------------|-------------|-------------|
| 2            | .400/2.54   | .200/5.08   |
| 3            | .200/5.08   | .300/7.62   |
| 4            | .300/7.62   | .400/10.16  |
| 5            | .400/10.16  | .500/12.70  |
| 6            | .500/12.70  | .600/15.24  |
| 7            | .600/15.24  | .700/17.78  |
| 8            | .700/17.78  | .800/20.32  |
| 9            | .800/20.32  | .900/22.86  |
| 10           | .900/22.86  | 1.000/25.40 |
| 11           | 1.000/25.40 | 1.100/27.94 |
| 12           | 1.100/27.94 | 1.200/30.48 |
| 13           | 1.200/30.48 | 1.300/33.02 |
| 14           | 1.300/33.02 | 1.400/35.56 |
| 15           | 1.400/35.56 | 1.500/38.10 |
| 16           | 1.500/38.10 | 1.600/40.64 |
| 17           | 1.600/40.64 | 1.700/43.18 |
| 18           | 1.700/43.18 | 1.800/45.72 |
| 19           | 1.800/45.72 | 1.900/48.26 |
| 20           | 1.900/48.26 | 2.000/50.80 |
| 21           | 2.000/50.80 | 2.100/53.34 |
| 22           | 2.100/53.34 | 2.200/55.88 |
| 23           | 2.200/55.88 | 2.300/58.42 |
| 24           | 2.300/58.42 | 2.400/60.96 |
| 25           | 2.400/60.96 | 2.500/63.50 |
| 26           | 2.500/63.50 | 2.600/66.04 |
| 27           | 2.600/66.04 | 2.700/68.58 |
| 28           | 2.700/68.58 | 2.800/71.12 |
| 29           | 2.800/71.12 | 2.900/73.66 |
| 30           | 2.900/73.66 | 3.000/76.20 |
| 31           | 3.000/76.20 | 3.100/78.74 |
| 32           | 3.100/78.74 | 3.200/81.28 |
| 33           | 3.200/81.28 | 3.300/83.82 |
| 34           | 3.300/83.82 | 3.400/86.36 |
| 35           | 3.400/86.36 | 3.500/88.90 |
| 36           | 3.500/88.90 | 3.600/91.44 |



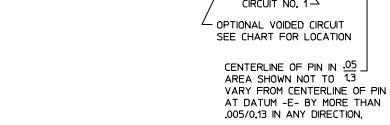
DETAIL X  
SCALE 5:1  
SEE NOTE 10



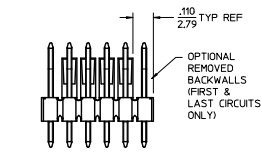
DETAIL Y  
SCALE 5:1  
SEE NOTE 10



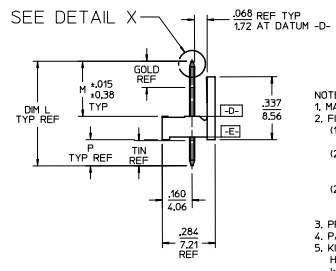
DETAIL Z  
SCALE 5:1



KINKED PIN OPTION  
SEE NOTE 5

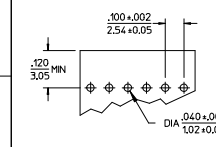


REMOVED BACKWALL OPTION  
SEE NOTE 11



- NOTES:
- MATERIAL: GLASS FILLED NYLON. 94V-0. COLOR: BLACK
  - FINISH:
    - (154) OVERALL TIN: .000100/0.00254 MIN. OVER .000050/0.00127 MIN NICKEL.
    - (208) SELECT GOLD: .000015/0.00038 MIN. SELECT TIN: .000100/0.00254 MIN. OVERALL NICKEL UNDERPLATE: .000050/0.00127 MIN.
    - (228) SELECT GOLD: .000030/0.00076 MIN. SELECT TIN: .000010/0.00254 MIN. OVERALL NICKEL UNDERPLATE: .000050/0.00127 MIN.
  - PRODUCT SPECIFICATION PS 10-07.
  - PACKAGING INFORMATION: SEE TABLES
  - KINK PIN OPTION NOT RECOMMENDED FOR 2 CIRCUIT PARTS. HOLE SIZE MAY NEED TO BE ADJUSTED ON 2 CIRCUIT PARTS WITH KINK OPTION FOR PROPER INSERTION INTO THE PCB. SEE SPES-42003 FOR ADDITIONAL INFORMATION ON KINK DIRECTION AND PLACEMENT.
  - HEADERS ARE NOT STACKABLE ON .100/2.54 CENTERS.
  - SOLDERABILITY PER SPES-162.
  - PIN PUSH OUT FORCE: 3 LBS. MIN.
  - PARTS CONFORM TO CLASS 'B' REQUIREMENTS OF COSMETIC SPECIFICATION PS-45499-002.
  - PIN TIP DIMENSIONS ARE SHOWN FOR REFERENCE ONLY. DIMENSIONS APPLY PRIOR TO PLATING OR ASSEMBLY.
  - FIRST AND LAST CIRCUIT BACKWALLS MUST BE REMOVED WHEN MATING TO A PART WITH POLARIZING RBS.

|       |     |
|-------|-----|
| 2=    | K4  |
| 1     | K5  |
| SHEET | REV |



RECOMMENDED PC BOARD LAYOUT

| ADD NOTE | DESCRIPTION  | QUALITY SYMBOLS   |
|----------|--|-------------------|
| 11       | EC NO: IJCP2014-1471<br>DRAWN BY: PBER<br>CHKD BY: ANDERSON<br>APPROV: SMITH | ▽=0<br>▽=0<br>▽=0 |

| GENERAL TOLERANCES (UNLESS SPECIFIED) |        |         |
|---------------------------------------|--------|---------|
|                                       | mm     | INCH    |
| 4 PLACES                              | ± .005 | ± .0002 |
| 3 PLACES                              | ± .010 | ± .0004 |
| 2 PLACES                              | ± .014 | ± .0005 |
| 1 PLACE                               | ± .036 | ± .0014 |
| 0 PLACE                               | ±      | ±       |

| DIMENSION STYLE |            | SCALE |      | DESIGN UNITS |  | THIRD ANGLE PROJECTION |  |
|-----------------|------------|-------|------|--------------|--|------------------------|--|
| IN/MM           | DATE       | 2:1   | INCH |              |  |                        |  |
| DRAWN BY        | DATE       |       |      |              |  |                        |  |
| JSCHAFFER       | 2004/03/20 |       |      |              |  |                        |  |
| CHECKED BY      | DATE       |       |      |              |  |                        |  |
| KSAMIEC         | 2004/03/20 |       |      |              |  |                        |  |
| APPROVED BY     | DATE       |       |      |              |  |                        |  |
| MARGULIS        | 2004/03/20 |       |      |              |  |                        |  |

TITLE: .100 POLARIZING BREAKAWAY HEADER ASSY

**molex**

MATERIAL NO. SEE CHART DOCUMENT NO. SD-42225-001 SHEET NO. 1 OF \*

THIS DRAWING CONTAINS INFORMATION THAT IS PROPRIETARY TO MOLEX INCORPORATED AND SHOULD NOT BE USED WITHOUT WRITTEN PERMISSION