

Excellent Integrated System Limited

Stocking Distributor

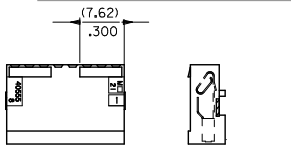
Click to view price, real time Inventory, Delivery & Lifecycle Information:

[Molex Connector Corporation](#)
[0022419145](#)

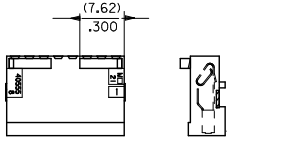
For any questions, you can email us directly:

sales@integrated-circuit.com

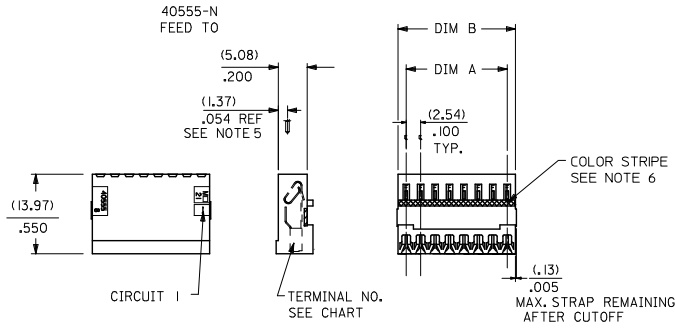
13 12 11 10 9 8 7 6 5 4 3 2 1



40555-AN
FEED TO WITH RAMP



40555-BN
FEED TO WITH RAMP
AND POLARIZING RIBS



NOTES:

- MATERIAL: HOUSING: UNFILLED NYLON UL94V-2, MOLDED NATURAL (WHITE)
TERMINAL: SEE LEGEND
- FINISH:
 - (154) OVERALL TIN: (0.00254)/.000100 MIN. OVER NICKEL: (0.00127)/.000050 MIN.
 - (208) SELECT GOLD: (0.000381)/.000015 MIN.,
SELECT TIN: (0.00254)/.000100 MIN.,
OVERALL NICKEL UNDERPLATE: (0.00127)/.000050 MIN.
 - (228) SELECT GOLD: (0.000761)/.000030 MIN.,
SELECT TIN: (0.00254)/.000100 MIN.,
OVERALL NICKEL UNDERPLATE: (0.00127)/.000050 MIN.
 - (909) OVERALL HOT TIN DIPPED, (0.00254)/.000100 MIN.
- PRODUCT SPECIFICATION: PS-7720-001
- PACKAGING: ALL PARTS ARE TO BE BULK PACKED PER PK-40555-001 UNLESS OTHERWISE SPECIFIED IN CHART.
- FOR USE WITH (0.64)/.025 SQUARE OR ROUND PINS, INSERTION DEPTH OF (6.10/7.87)/.240/.310
- COLOR STRIPE TO RUN LENGTH OF RIB AS SHOWN.
- WIRE TERMINATION SPECIFICATION: SMES-7720-0002
- THIS PART CONFORMS TO CLASS B REQUIREMENTS OF COSMETIC SPECIFICATION PS-45499-002.

NO OF CKTS	DIM A	DIM B
2	(2,54)	(5,44)
3	(5,08)	(7,98)
4	(7,62)	(10,52)
5	(10,16)	(13,06)
6	(12,70)	(15,60)
7	(15,24)	(18,14)
8	(17,78)	(20,68)
9	(20,30)	(23,22)
10	(22,86)	(25,76)
11	(25,40)	(28,30)
12	(27,94)	(30,84)
13	(30,48)	(33,38)
14	(33,02)	(35,92)
15	(35,56)	(38,46)
16	(38,10)	(41,00)
17	(40,64)	(43,54)
18	(43,18)	(46,08)
19	(45,72)	(48,62)
20	(48,26)	(51,16)
21	(50,80)	(53,70)
22	(53,34)	(56,24)
23	(55,88)	(58,78)
24	(58,42)	(61,32)
25	(60,96)	(63,86)
26	(63,50)	(66,40)
27	(66,04)	(68,94)
28	(68,58)	(71,48)

A-40555- * N * *
HOUSING OPTIONS

BLANK=40555-N
A=40555-AN
B=40555-BN

TERMINAL OPTIONS

F = 40554-F(154), BRASS
H = 40627-H(154), BRASS
HA = 40921-H(154), BRASS HUMPBACK (SEE SHEET 2)
HB = 40554-H(154), BRASS
FA = 40554-F(P909), BRASS
HE = 40554-H(P909), BRASS
HF = 41138-H(228), PHOS. BRONZE
A = 7691-A(154), BRASS
HG = 41138-H(208), PHOS. BRONZE
HK = 41138-H(154), PHOS. BRONZE

NO. OF CKTS

WIRE SPECIFICATIONS (INSULATION DIA. (1.47)/.058 MAX.)

TERMINAL OPTION	COLOR STRIPE	ACCEPTS WIRE:
-A(***)	BROWN	28 AWG. STRANDED TOPCOATED 28 AWG. STRANDED TINNED 28 AWG. SOLID TINNED 26 AWG. STRANDED TINNED 26 AWG. SOLID TINNED
-F(***)	NONE	24 AWG. STRANDED TOPCOATED
-H(***)	GREEN	24 AWG. STRANDED TOPCOATED 24 AWG. STRANDED TINNED 24 AWG. SOLID TINNED 26 AWG. STRANDED TOPCOATED

8	BK2	REV
7	BK2	REV
6	BK2	REV
5	BK2	REV
4	BL	REV
3	BK2	REV
2	BL	REV
1	BL	REV

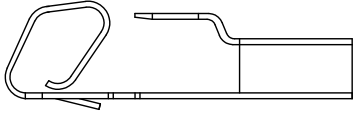
QUALITY SYMBOLS

GENERAL TOLERANCES (UNLESS SPECIFIED)	DIMENSION STYLE	SCALE	DESIGN UNITS	THIRD ANGLE PROJECTION
	MM/IN	---	INCH	
4 PLACES ±---	mm	DRAWN BY	DATE	INSULATION DISPLACEMENT CONNECTOR ASSEMBLY (2.54)/.100 CENTERS
3 PLACES ±---	INCH	RJG	1985/09/16	
2 PLACES ±---		CHECKED BY	DATE	
1 PLACE ±---		EDGLEY	1985/09/16	MOLEX INCORPORATED
ANGULAR ±1/2°		APPROVED BY	DATE	
		LENZ	1985/09/16	

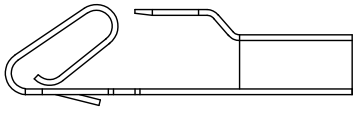
DRAFT WHERE APPLICABLE MUST REMAIN WITHIN DIMENSIONS

MATERIAL NO. SEE CHART
DOCUMENT NO. SDA-40555-*N*
SHEET NO. 1 OF 8
THIS DRAWING CONTAINS INFORMATION THAT IS PROPRIETARY TO MOLEX INCORPORATED AND SHOULD NOT BE USED WITHOUT WRITTEN PERMISSION

ENG. NO.	HOUSING NO.	TERMINAL NO.	COLOR ID	EDP ON SHT./COL.
A-40555-NHB	40555-N	40554-H(154)	GREEN	3 / 1
A-40555-ANHB	40555-AN	40554-H(154)	GREEN	3 / 2
A-40555-BNHB	40555-BN	40554-H(154)	GREEN	3 / 3
				/
				/
				/
A-40555-NHE	40555-N	40554-H(P909)	GREEN	3 / 7
A-40555-ANHE	40555-AN	40554-H(P909)	GREEN	3 / 8
A-40555-BNHE	40555-BN	40554-H(P909)	GREEN	3 / 9
				/
				/
				/
				/
				/



40921 HUMPBACK TERMINAL



40554, 40627, 41138 AND 7691 TERMINALS

SEE SHEET 1 IEC NO: UCP2011-13/4 DRAWN BY: DRINKITPPER 2011/01/04 CHKD: J.BELL APPR: SMITH 2011/03/09	QUALITY SYMBOLS □=0 □=0 □=0	GENERAL TOLERANCES (UNLESS SPECIFIED)		DIMENSION STYLE		SCALE	DESIGN UNITS	THIRD ANGLE PROJECTION	
				MM/IN		---	INCH		
		4 PLACES	± ---	± ---	DRAWN BY	DATE	TITLE INSULATION DISPLACEMENT CONNECTOR ASSEMBLY .100 CENTERS MOLEX INCORPORATED		
		3 PLACES	± ---	± ---	SAMIEC	1991/10/28			
2 PLACES	± ---	± ---	CHECKED BY	DATE					
1 PLACE	± ---	± ---	EDGLEY	1991/10/28	APPROVED BY	DATE			
		ANGULAR	± 1/2°	LENZ	1991/10/28				
DRAFT WHERE APPLICABLE MUST REMAIN WITHIN DIMENSIONS		SEE CHART		MATERIAL NO.		DOCUMENT NO.		SHEET NO.	
				SIZE		SDA-40555-*N*		2 OF 8	
				C		THIS DRAWING CONTAINS INFORMATION THAT IS PROPRIETARY TO MOLEX INCORPORATED AND SHOULD NOT BE USED WITHOUT WRITTEN PERMISSION			

A-40555-NHB		A-40555-ANHB		A-40555-BNHB									
PART NO.	ENG. NO.	PART NO.	ENG. NO.	PART NO.	ENG. NO.	PART NO.	ENG. NO.	PART NO.	ENG. NO.	PART NO.	ENG. NO.	PART NO.	ENG. NO.
	A-40555-2HB	DBSOLETE	A-40555-A2HB	22-41-8024	A-40555-B2HB								
	A-40555-3HB		A-40555-A3HB	DBSOLETE	A-40555-B3HB								
	A-40555-4HB		A-40555-A4HB	DBSOLETE	A-40555-B4HB								
	A-40555-5HB		A-40555-A5HB	DBSOLETE	A-40555-B5HB								
	A-40555-6HB		A-40555-A6HB	DBSOLETE	A-40555-B6HB								
	A-40555-7HB		A-40555-A7HB	22-41-8074	A-40555-B7HB								
	A-40555-8HB		A-40555-A8HB	22-41-8084	A-40555-B8HB								
	A-40555-9HB		A-40555-A9HB	22-41-8094	A-40555-B9HB								
	A-40555-10HB		A-40555-A10HB	DBSOLETE	A-40555-B10HB								
	A-40555-11HB		A-40555-A11HB	DBSOLETE	A-40555-B11HB								
	A-40555-12HB		A-40555-A12HB	22-41-8124	A-40555-B12HB								
	A-40555-13HB		A-40555-A13HB		A-40555-B13HB								
	A-40555-14HB		A-40555-A14HB		A-40555-B14HB								
	A-40555-15HB		A-40555-A15HB	DBSOLETE	A-40555-B15HB								
	A-40555-16HB		A-40555-A16HB	22-41-8164	A-40555-B16HB								
	A-40555-17HB		A-40555-A17HB		A-40555-B17HB								
	A-40555-18HB		A-40555-A18HB	22-41-8184	A-40555-B18HB								
	A-40555-19HB		A-40555-A19HB		A-40555-B19HB								
	A-40555-20HB		A-40555-A20HB		A-40555-B20HB								
	A-40555-21HB		A-40555-A21HB		A-40555-B21HB								
	A-40555-22HB		A-40555-A22HB		A-40555-B22HB								
	A-40555-23HB		A-40555-A23HB		A-40555-B23HB								
	A-40555-24HB		A-40555-A24HB		A-40555-B24HB								
	A-40555-25HB		A-40555-A25HB		A-40555-B25HB								
	A-40555-26HB		A-40555-A26HB		A-40555-B26HB								
	A-40555-27HB		A-40555-A27HB		A-40555-B27HB								
	A-40555-28HB		A-40555-A28HB		A-40555-B28HB								

A-40555-NHE		A-40555-ANHE		A-40555-BNHE	
PART NO.	ENG. NO.	PART NO.	ENG. NO.	PART NO.	ENG. NO.
22-41-9022	A-40555-2HE	DBSOLETE	A-40555-A2HE	22-41-9028	A-40555-B2HE
22-41-9032	A-40555-3HE	22-41-9035	A-40555-A3HE	DBSOLETE	A-40555-B3HE
22-41-9042	A-40555-4HE	22-41-9045	A-40555-A4HE	DBSOLETE	A-40555-B4HE
22-41-9052	A-40555-5HE	22-41-9055	A-40555-A5HE	DBSOLETE	A-40555-B5HE
22-41-9062	A-40555-6HE	22-41-9065	A-40555-A6HE	DBSOLETE	A-40555-B6HE
22-41-9072	A-40555-7HE	22-41-9075	A-40555-A7HE	22-41-9078	A-40555-B7HE
22-41-9082	A-40555-8HE	22-41-9085	A-40555-A8HE	22-41-9088	A-40555-B8HE
22-41-9092	A-40555-9HE	22-41-9095	A-40555-A9HE	22-41-9098	A-40555-B9HE
22-41-9102	A-40555-10HE	22-41-9105	A-40555-A10HE	DBSOLETE	A-40555-B10HE
22-41-9112	A-40555-11HE	22-41-9115	A-40555-A11HE	DBSOLETE	A-40555-B11HE
22-41-9122	A-40555-12HE	22-41-9125	A-40555-A12HE	22-41-9128	A-40555-B12HE
22-41-9132	A-40555-13HE	22-41-9135	A-40555-A13HE	22-41-9138	A-40555-B13HE
22-41-9142	A-40555-14HE	22-41-9145	A-40555-A14HE	22-41-9148	A-40555-B14HE
DBSOLETE	A-40555-15HE	22-41-9155	A-40555-A15HE	DBSOLETE	A-40555-B15HE
22-41-9162	A-40555-16HE	22-41-9165	A-40555-A16HE	22-41-9168	A-40555-B16HE
22-41-9172	A-40555-17HE	22-41-9175	A-40555-A17HE	22-41-9178	A-40555-B17HE
22-41-9182	A-40555-18HE	22-41-9185	A-40555-A18HE	22-41-9188	A-40555-B18HE
22-41-9192	A-40555-19HE	22-41-9195	A-40555-A19HE	22-41-9198	A-40555-B19HE
22-41-9202	A-40555-20HE	22-41-9205	A-40555-A20HE	22-41-9208	A-40555-B20HE
22-41-9212	A-40555-21HE	22-41-9215	A-40555-A21HE	22-41-9218	A-40555-B21HE
22-41-9222	A-40555-22HE	22-41-9225	A-40555-A22HE	22-41-9228	A-40555-B22HE
22-41-9232	A-40555-23HE	22-41-9235	A-40555-A23HE	22-41-9238	A-40555-B23HE
22-41-9242	A-40555-24HE	22-41-9245	A-40555-A24HE	22-41-9248	A-40555-B24HE
22-41-9252	A-40555-25HE	22-41-9255	A-40555-A25HE	22-41-9258	A-40555-B25HE
22-41-9262	A-40555-26HE	22-41-9265	A-40555-A26HE	22-41-9268	A-40555-B26HE
22-41-9272	A-40555-27HE	22-41-9275	A-40555-A27HE	22-41-9278	A-40555-B27HE
22-41-9282	A-40555-28HE	22-41-9285	A-40555-A28HE	22-41-9288	A-40555-B28HE

SEE SHEET 1 EC NO: UCP2010-0587 2009/10/23 DRAWN: IRBENES CHK: KAKIIPER APPR: SMITH 2009/11/11 2009/11/11	QUALITY SYMBOLS 	GENERAL TOLERANCES (UNLESS SPECIFIED)		DIMENSION STYLE MM/IN		SCALE ---	DESIGN UNITS INCH	THIRD ANGLE PROJECTION	
		4 PLACES ± --- ± --- 3 PLACES ± --- ± --- 2 PLACES ± --- ± --- 1 PLACE ± --- ± ---		DRAWN BY DATE SAMIEC 1991/10/28		TITLE INSULATION DISPLACEMENT CONNECTOR ASSEMBLY .100 CENTERS			
		ANGULAR ±1/2°		CHECKED BY DATE EGGLEY 1991/10/28		MOLEX INCORPORATED			
		DRAFT WHERE APPLICABLE MUST REMAIN WITHIN DIMENSIONS		APPROVED BY DATE LENZ 1991/10/28		MATERIAL NO. SEE CHART		DOCUMENT NO. SDA-40555-*N*	