

Excellent Integrated System Limited

Stocking Distributor

Click to view price, real time Inventory, Delivery & Lifecycle Information:

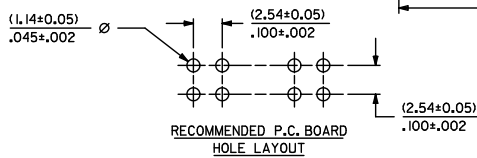
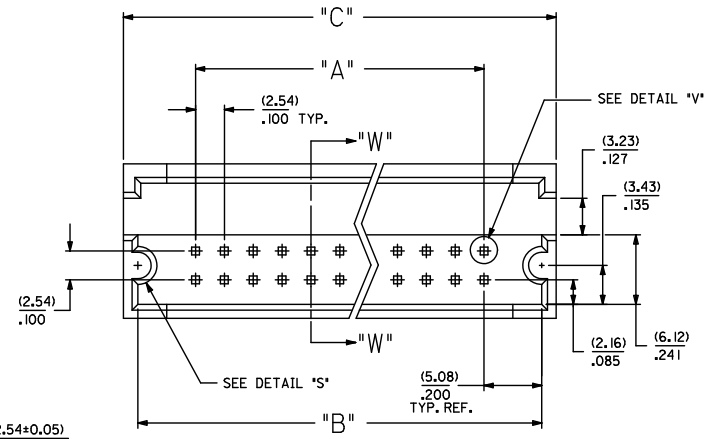
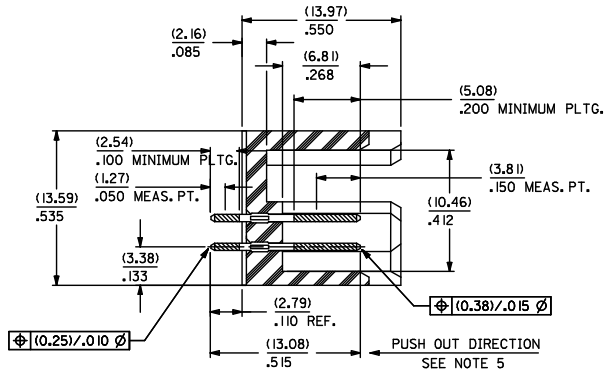
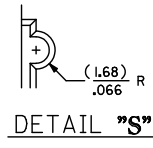
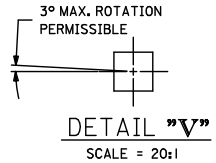
[Molex Connector Corporation](#)
[0025026036](#)

For any questions, you can email us directly:

sales@integrated-circuit.com

CKT. SIZE	PART NUMBER	ENG. NUMBER SDA-70204-	DIM. "A"		DIM. "B"		DIM. "C"	
			MM	IN.	MM	IN.	MM	IN.
08	25-02-6008	0259	7,62	.300	17,78	.700	20,32	.800
10	25-02-6010	0260	10,16	.400	20,32	.800	22,86	.900
12	25-02-6012	0261	12,70	.500	22,86	.900	25,40	1,000
14	25-02-6014	0262	15,24	.600	25,40	1,000	27,94	1,100
16	25-02-6016	0263	17,78	.700	27,94	1,100	30,48	1,200
18	25-02-6018	0264	20,32	.800	30,48	1,200	33,02	1,300
20	25-02-6020	0265	22,86	.900	33,02	1,300	35,56	1,400
22	25-02-6022	0266	25,40	1,000	35,56	1,400	38,10	1,500
24	25-02-6024	0267	27,94	1,100	38,10	1,500	40,64	1,600
26	25-02-6026	0268	30,48	1,200	40,64	1,600	43,10	1,700
28	25-02-6028	0269	33,02	1,300	43,10	1,700	45,72	1,800
30	25-02-6030	0270	35,56	1,400	45,72	1,800	48,26	1,900
32	25-02-6032	0271	38,10	1,500	48,26	1,900	50,80	2,000
34	25-02-6034	0272	40,64	1,600	50,80	2,000	53,34	2,100
36	25-02-6036	0273	43,10	1,700	53,34	2,100	55,88	2,200
38	25-02-6038	0274	45,72	1,800	55,88	2,200	58,42	2,300
40	25-02-6040	0275	48,26	1,900	58,42	2,300	60,96	2,400

CKT. SIZE	PART NUMBER	ENG. NUMBER SDA-70204-	DIM. "A"		DIM. "B"		DIM. "C"	
			MM	IN.	MM	IN.	MM	IN.
42	25-02-6042	0276	50,80	2,000	60,96	2,400	63,50	2,500
44	25-02-6044	0277	53,34	2,100	63,50	2,500	66,04	2,600
46	25-02-6046	0278	55,88	2,200	66,04	2,600	68,58	2,700
48	25-02-6048	0279	58,42	2,300	68,58	2,700	71,12	2,800
50	25-02-6050	0280	60,96	2,400	71,12	2,800	73,66	2,900
52	25-02-6052	0281	63,50	2,500	73,66	2,900	76,20	3,000
54	25-02-6054	0282	66,04	2,600	76,20	3,000	78,74	3,100
56	25-02-6056	0283	68,58	2,700	78,74	3,100	81,28	3,200
58	25-02-6058	0284	71,12	2,800	81,28	3,200	83,82	3,300
60	25-02-6060	0285	73,66	2,900	83,82	3,300	86,36	3,400
62	25-02-6062	0286	76,20	3,000	86,36	3,400	88,90	3,500
64	25-02-6064	0287	78,74	3,100	88,90	3,500	91,44	3,600
66	25-02-6066	0288	81,28	3,200	91,44	3,600	93,98	3,700
68	25-02-6068	0289	83,82	3,300	93,98	3,700	96,52	3,800
70	25-02-6070	0290	86,36	3,400	96,52	3,800	99,06	3,900
72	25-02-6072	0291	88,90	3,500	99,06	3,900	101,60	4,000



- NOTES:
1. WAFER MATERIAL: GLASS FILLED NYLON, COLOR: BLACK
 2. PIN MATERIAL: COPPER ALLOY
 3. PIN PLATING:
TIP: 15 MICRONS MINIMUM GOLD IN SELECTED AREA
TAIL: 75 MICRONS MINIMUM TIN IN SELECTED AREA
OVER NICKEL UNDERPLATE OVER-ALL
 4. PINS MUST MEET SOLDERABILITY SPEC. NO. 152
 5. PIN PUSH-OUT FORCE (1.81 KG) / 4 LBS MINIMUM
 6. REFER TO P.S. NO. 70204
 7. STANDARD PACKAGING PER: PK-70873-0070

CORRECT DIMENSION EC NO: UCP2011-3892 DRAWN BY: BARBARA 2011/06/09 CHKD: MILLER APPR: MILLER REV	QUALITY SYMBOLS ▽=0 ▽=0 ▽=0	GENERAL TOLERANCES (UNLESS SPECIFIED)	DIMENSION STYLE	SCALE	DESIGN UNITS	THIRD ANGLE PROJECTION
		mm INCH	MM/IN	4:1	INCH	☉
		4 PLACES ± --- ± ---	DRAWN BY: JAS	DATE: 1986/05/20	TITLE: SHROUDED HEADER DUAL ROW W/PCB SLOTS & GUIDE EARS .100 GRID .025 SQ PIN	
		3 PLACES ± --- ± .010	CHECKED BY: EIK	DATE: 1986/05/20	MOLEX INCORPORATED	
		2 PLACES ± .025 ± ---	APPROVED BY: MAZ	DATE: 1986/05/20	MATERIAL NO. DOCUMENT NO. SHEET NO. 1 OF 1	
		1 PLACE ± --- ± ---	DRAFT WHERE APPLICABLE MUST REMAIN WITHIN DIMENSIONS			
		ANGULAR ± 1/2°	SEE TABLE			
			THIS DRAWING CONTAINS INFORMATION THAT IS PROPRIETARY TO MOLEX INCORPORATED AND SHOULD NOT BE USED WITHOUT WRITTEN PERMISSION			