

Excellent Integrated System Limited

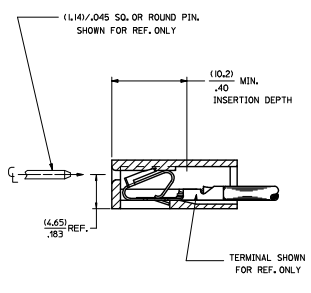
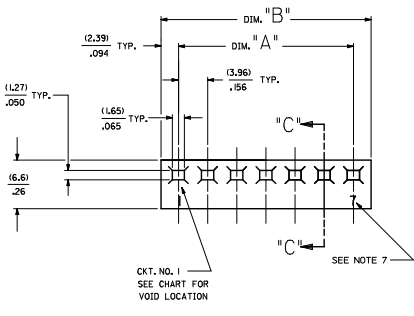
Stocking Distributor

Click to view price, real time Inventory, Delivery & Lifecycle Information:

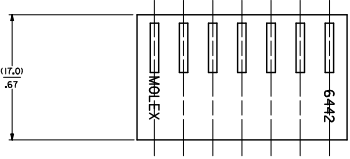
[Molex Connector Corporation](#)
[0026034032](#)

For any questions, you can email us directly:
sales@integrated-circuit.com

20 19 18 17 16 15 14 13 12 11 10 9 8 7 6 5 4 3 2 1



| NO. OF CKT'S: | DIM. A | DIM. B |
|---------------|--------------|--------------|
| 1 | ----- | (4.78±.18) |
| 2 | (3.96±.13) | (.188±.007) |
| 3 | (.56±.005) | (.344±.007) |
| 4 | (1.92±.13) | (.1270±.18) |
| 5 | (.32±.005) | (.500±.007) |
| 6 | (1.65±.13) | (.166±.18) |
| 7 | (.468±.005) | (.656±.007) |
| 8 | (5.85±.13) | (2.062±.18) |
| 9 | (.62±.005) | (.872±.007) |
| 10 | (1.98±.13) | (2.459±.18) |
| 11 | (.780±.005) | (.968±.007) |
| 12 | (23.77±.13) | (28.25±.18) |
| 13 | (.936±.005) | (1.224±.007) |
| 14 | (27.74±.25) | (32.51±.30) |
| 15 | (1.092±.010) | (1.780±.012) |
| 16 | (31.10±.25) | (35.47±.30) |
| 17 | (2.48±.010) | (1.436±.012) |
| 18 | (35.66±.25) | (40.44±.30) |
| 19 | (1.404±.010) | (1.592±.012) |
| 20 | (17.83±.25) | (44.40±.30) |
| 21 | (1.560±.010) | (1.748±.012) |
| 22 | (43.59±.25) | (48.36±.30) |
| 23 | (1.76±.010) | (1.904±.012) |
| 24 | (17.83±.25) | (52.32±.36) |
| 1 | (15.11±.36) | (56.29±.41) |
| 2 | (2.028±.014) | (2.216±.016) |
| 3 | (58.47±.36) | (60.25±.41) |
| 4 | (2.18±.014) | (2.372±.016) |
| 5 | (59.44±.36) | (64.21±.41) |
| 6 | (2.340±.014) | (2.528±.016) |
| 7 | (63.40±.36) | (68.17±.41) |
| 8 | (2.496±.014) | (2.684±.016) |
| 9 | (67.36±.36) | (72.14±.41) |
| 10 | (2.652±.014) | (2.840±.016) |
| 11 | (71.32±.36) | (76.10±.41) |
| 12 | (2.808±.014) | (2.996±.016) |
| 13 | (75.29±.46) | (80.06±.51) |
| 14 | (2.964±.018) | (3.152±.020) |
| 15 | (79.25±.46) | (84.02±.51) |
| 16 | (3.120±.018) | (3.308±.020) |
| 17 | (83.21±.46) | (87.98±.51) |
| 18 | (3.276±.018) | (3.464±.020) |
| 19 | (87.17±.46) | (91.95±.51) |
| 20 | (3.432±.018) | (3.620±.020) |
| 21 | (91.14±.46) | (95.91±.51) |
| 22 | (3.588±.018) | (3.776±.020) |



- NOTES:
1. MATERIAL A: NYLON 6/6 UL94V-2. COLOR: NATURAL
 2. FINISH: N/A
 3. THIS PART COMPLIES WITH PRODUCT SPECIFICATION PS-40-02.
 4. PACKAGING SPECIFICATIONS PK-6442-001
 5. HOUSING SHOWN ABOVE IS STANDARD HOUSING WITH NO OPTIONS.
 6. THIS HOUSING FOR USE WITH TERMINAL NO. 45570-*, 18-20 GAJ WITH (3.32)/.123 MAX. INSULATION DIA. 6838-*, 18-24 GAJ WITH (2.79)/.110 MAX. INSULATION DIA. 7258-*, (22-26 GAJ) WITH (1.65)/.065 MAX. INSULATION DIA.
 7. LAST CIRCUIT ID. NOT PRESENT ON 2-3 CIRCUIT HOUSINGS AND MAY OR MAY NOT BE PRESENT ON 4 CIRCUIT HOUSINGS AND LARGER.
 8. THIS PART CONFORMS TO CLASS B REQUIREMENTS OF COSMETIC SPECIFICATION PS-45499-002.
 9. SEE SHEET 2 FOR OPTIONS.

6442- * N - * * *

| CODE | HOOKS | SIDE HOOKS | RAMP |
|-------|-------|------------|----------|
| BLANK | NONE | NONE | NONE |
| A | NONE | YES | NONE |
| R | NONE | NONE | FRICTION |
| B | NONE | NONE | TYPE B |
| C | NONE | NONE | TYPE C |

VOLTAGE RATING OPTION
BLANK=NONE
V= *250 VAC* ON HOUSING

MAT'L. OPTION
BLANK= MATERIAL A (SEE NOTE 1)

MOLDED VOID CODE
2=NO VOIDS
A=CKT. 1 VOID,
B=CKT. 2 VOID, ETC.
5=1ST MULTIPLE VOID,
52=2ND MULTIPLE VOID, ETC.

NO. OF CKT'S.

| QUALITY SYMBOLS | GENERAL TOLERANCES (UNLESS SPECIFIED) | DIMENSION STYLE | SCALE | DESIGN UNITS | THIRD ANGLE PROJECTION |
|-----------------|---------------------------------------|-----------------|-------|--------------|------------------------|
| ▽=0 | 4 PLACES ±.010 | MM/IN | --- | INCH | THIRD ANGLE PROJECTION |
| ▽=0 | 3 PLACES ±.010 | | | | |
| ▽=0 | 2 PLACES ±0.25 ±.014 | | | | |
| ▽=0 | 1 PLACE ±0.36 ±.--- | | | | |
| ▽=0 | 0 PLACE ±.--- | | | | |

REVISION NOTE 7
EC MOL LCP2005-4588 2005/05/04
DRAWN/INSPER 2005/05/04
CHKD/QUILEN 2005/05/04
APPROVED/LENZ 2005/05/04

QUALITY SYMBOLS: 4 PLACES ±.010, 3 PLACES ±.010, 2 PLACES ±0.25 ±.014, 1 PLACE ±0.36 ±.---, 0 PLACE ±.---

GENERAL TOLERANCES (UNLESS SPECIFIED): mm, INCH

DIMENSION STYLE: MM/IN

SCALE: ---

DESIGN UNITS: INCH

THIRD ANGLE PROJECTION

DRAWN BY: POLGAR DATE: 1986/12/03

CHECKED BY: DATE: 1986/12/03

APPROVED BY: LENZ DATE: 1986/12/03

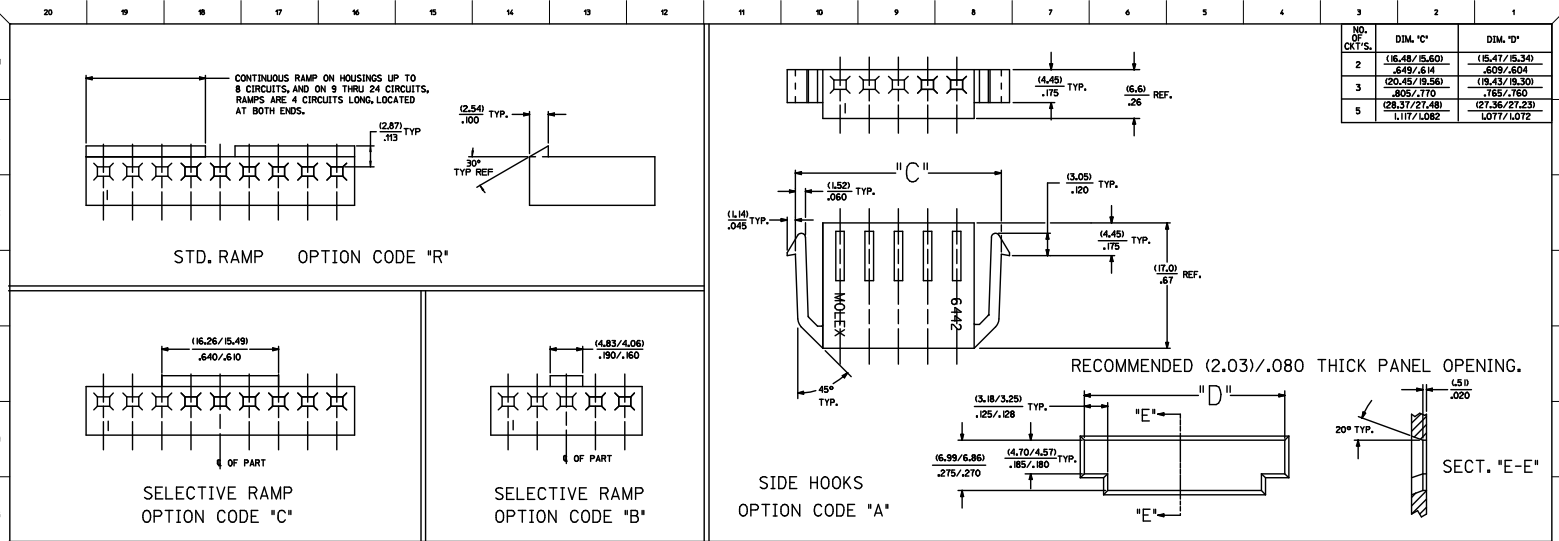
MATERIAL NO. SEE CHART

DOCUMENT NO. SD-6442

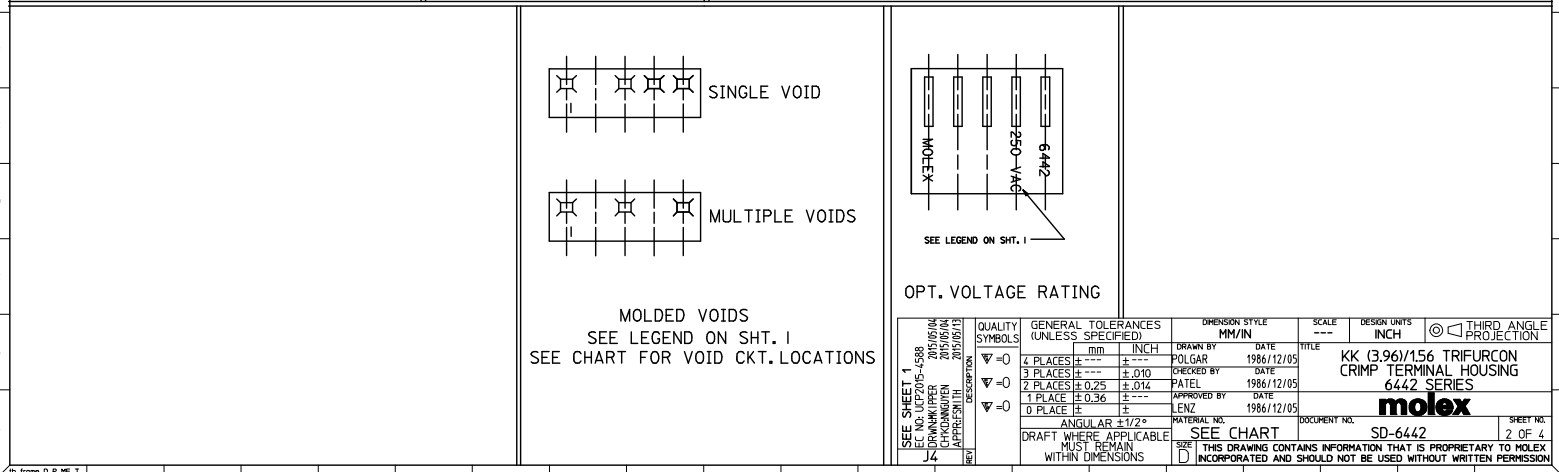
SHEET NO. 1 OF 4

INCORPORATED AND SHOULD NOT BE USED WITHOUT WRITTEN PERMISSION

18 Frame_0_P_ME_T Rev. 5 2005/05/04



| NO. OF CRT'S. | DIM. 'C' | DIM. 'D' |
|---------------|---------------|---------------|
| 2 | (16.48/15.60) | (15.47/15.34) |
| 3 | .649/.614 | .609/.604 |
| 5 | (20.45/19.56) | (19.43/19.30) |
| | .265/.170 | .165/.160 |
| | (28.37/27.48) | (27.36/27.23) |
| | 1.117/1.082 | 1.077/1.072 |



| QUALITY SYMBOLS | GENERAL TOLERANCES (UNLESS SPECIFIED) | | DIMENSION STYLE | | SCALE | DESIGN UNITS | THIRD ANGLE PROJECTION |
|-----------------|---------------------------------------|-------|-----------------|------------|---|--------------|--|
| | mm | INCH | MM/IN | INCH | | | |
| ▽=0 | 4 PLACES ±--- | ±--- | POLGAR | 1986/12/05 | --- | INCH | ◎ |
| ▽=0 | 3 PLACES ±--- | ±.010 | CHECKED BY | DATE | | | |
| ▽=0 | 2 PLACES ±0.25 | ±.014 | PATEL | 1986/12/05 | | | |
| ▽=0 | 1 PLACE ±0.36 | ±--- | APPROVED BY | DATE | | | |
| | 0 PLACE ±--- | ±--- | LENZ | 1986/12/05 | molex KK (3.96)/156 TRIFURCON CRIMP TERMINAL HOUSING 6442 SERIES SD-6442 | | SEE CHART DRAFT WHERE APPLICABLE MUST REMAIN WITHIN DIMENSIONS THIS DRAWING CONTAINS INFORMATION THAT IS PROPRIETARY TO MOLEX INCORPORATED AND SHOULD NOT BE USED WITHOUT WRITTEN PERMISSION |

| 6442-N** | | | 6442-RN** | | | 6442-RN** | | | 6442-RND** | | | 6442-BN** | | | 6442-CN** | | |
|------------|-----------|-------|------------|-------------|-------|-----------|----------|-------|------------|-------------|-------|-----------|----------|-------|-----------|----------|-------|
| PART NO. | ENG. NO. | VOIDS | PART NO. | ENG. NO. | VOIDS | PART NO. | ENG. NO. | VOIDS | PART NO. | ENG. NO. | VOIDS | PART NO. | ENG. NO. | VOIDS | PART NO. | ENG. NO. | VOIDS |
| 26-03-3011 | 6442-1-Z | | 26-03-4011 | 6442-R1-Z | | | | | 26-03-7021 | 6442-R1D-Z | | | | | | | |
| 26-03-3021 | 6442-2-Z | | 26-03-4020 | 6442-R2-Z | | | | | 26-03-7031 | 6442-R3D-Z | | | | | | | |
| 26-03-3031 | 6442-3-Z | | 26-03-4030 | 6442-R3-Z | | | | | 26-03-7041 | 6442-R4D-Z | | | | | | | |
| 26-03-3041 | 6442-4-Z | | 26-03-4041 | 6442-R4-Z | | | | | | 6442-R5D-Z | | | | | | | |
| 26-03-3051 | 6442-5-Z | | 26-03-4050 | 6442-R5-Z | | | | | | 6442-R6D-Z | | | | | | | |
| 26-03-3061 | 6442-6-Z | | 26-03-4061 | 6442-R6-Z | | | | | 26-03-7071 | 6442-R7D-Z | | | | | | | |
| 26-03-3071 | 6442-7-Z | | 26-03-4070 | 6442-R7-Z | | | | | | 6442-R8D-Z | | | | | | | |
| 26-03-3081 | 6442-8-Z | | 26-03-4081 | 6442-R8-Z | | | | | 26-03-7091 | 6442-R9D-Z | | | | | | | |
| 26-03-3091 | 6442-9-Z | | 26-03-4090 | 6442-R9-Z | | | | | | 6442-R10D-Z | | | | | | | |
| 26-03-3101 | 6442-10-Z | | 26-03-4101 | 6442-R10-Z | | | | | 26-03-7121 | 6442-R12D-Z | | | | | | | |
| 26-03-3111 | 6442-11-Z | | 26-03-4111 | 6442-R11-Z | | | | | | 6442-R13D-Z | | | | | | | |
| 26-03-3121 | 6442-12-Z | | 26-03-4121 | 6442-R12-Z | | | | | | 6442-R14D-Z | | | | | | | |
| 26-03-3131 | 6442-13-Z | | 26-03-4131 | 6442-R13-Z | | | | | | 6442-R15D-Z | | | | | | | |
| 26-03-3141 | 6442-14-Z | | 26-03-4141 | 6442-R14-Z | | | | | | 6442-R16D-Z | | | | | | | |
| 26-03-3151 | 6442-15-Z | | 26-03-4151 | 6442-R15-Z | | | | | 26-03-7171 | 6442-R17D-Z | | | | | | | |
| 26-03-3161 | 6442-16-Z | | 26-03-4161 | 6442-R16-Z | | | | | | 6442-R18D-Z | | | | | | | |
| 26-03-3171 | 6442-17-Z | | 26-03-4171 | 6442-R17-Z | | | | | | 6442-R19D-Z | | | | | | | |
| 26-03-3181 | 6442-18-Z | | 26-03-4181 | 6442-R18-Z | | | | | | 6442-R20D-Z | | | | | | | |
| 26-03-3191 | 6442-19-Z | | 26-03-4191 | 6442-R19-Z | | | | | | 6442-R21D-Z | | | | | | | |
| 26-03-3201 | 6442-20-Z | | 26-03-4201 | 6442-R20-Z | | | | | | 6442-R22D-Z | | | | | | | |
| 26-03-3211 | 6442-21-Z | | 26-03-4211 | 6442-R21-Z | | | | | | 6442-R23D-Z | | | | | | | |
| 26-03-3221 | 6442-22-Z | | 26-03-4221 | 6442-R22-Z | | | | | | 6442-R24D-Z | | | | | | | |
| 26-03-3231 | 6442-23-Z | | 26-03-4231 | 6442-R23-Z | | | | | | 6442-R25D-Z | | | | | | | |
| 26-03-3241 | 6442-24-Z | | 26-03-4241 | 6442-R24-Z | | | | | | 6442-R26D-Z | | | | | | | |
| | 6442-15-B | 2 | 26-03-4043 | 6442-R4-C | 3 | | | | 26-03-7042 | 6442-R4D-B | 2 | | | | | | |
| | 6442-9-B | 2 | 26-03-4055 | 6442-R5-E | 5 | | | | 26-03-7072 | 6442-R7D-C | 3 | | | | | | |
| | 6442-12-F | 6 | 26-03-4065 | 6442-R6-E | 5 | | | | 26-03-7092 | 6442-R9D-B | 2 | | | | | | |
| | 6442-7-51 | 1,7 | 26-03-4086 | 6442-R8-F | 6 | | | | 26-03-7093 | 6442-R9D-E | 5 | | | | | | |
| | 6442-9-51 | 1,9 | 26-03-4097 | 6442-R9-G | 7 | | | | 26-03-7122 | 6442-R12D-E | 5 | | | | | | |
| | 6442-9-52 | 2,9 | 26-03-4108 | 6442-R10-H | 8 | | | | 26-03-7172 | 6442-R17D-E | 5 | | | | | | |
| | 6442-8-B | 2 | 26-03-4120 | 6442-R12-J | 10 | | | | | | | | | | | | |
| | 6442-8-F | 6 | 26-03-4157 | 6442-R15-G | 7 | | | | | | | | | | | | |
| | 6442-10-D | 4 | 26-03-4073 | 6442-R7-C | 3 | | | | | | | | | | | | |
| | 6442-5-B | 2 | 26-03-4094 | 6442-R9-D | 4 | | | | | | | | | | | | |
| | 6442-10-B | 2 | 26-03-4096 | 6442-R9-F | 6 | | | | | | | | | | | | |
| | 6442-5-C | 3 | 26-03-4092 | 6442-R9-B | 2 | | | | | | | | | | | | |
| | 6442-13-B | 2 | 26-03-4064 | 6442-R6-D | 4 | | | | | | | | | | | | |
| | 6442-11-E | 5 | 26-03-4075 | 6442-R7-E | 5 | | | | | | | | | | | | |
| | | | 26-03-4096 | 6442-R9-E | 5 | | | | | | | | | | | | |
| | | | 26-03-4085 | 6442-R8-E | 5 | | | | | | | | | | | | |
| | | | 26-03-4072 | 6442-R7-B | 2 | | | | | | | | | | | | |
| | | | 26-03-4063 | 6442-R6-C | 3 | | | | | | | | | | | | |
| | | | 26-03-4092 | 6442-R9-B | 2 | | | | | | | | | | | | |
| | | | 26-03-4125 | 6442-R12-E | 5 | | | | | | | | | | | | |
| | | | 26-03-4123 | 6442-R12-C | 3 | | | | | | | | | | | | |
| | | | 26-03-4076 | 6442-R7-F | 6 | | | | | | | | | | | | |
| | | | 26-03-4128 | 6442-R12-J | 9 | | | | | | | | | | | | |
| | | | 26-03-4143 | 6442-R14-C | 3 | | | | | | | | | | | | |
| | | | 26-03-4093 | 6442-R9-C | 3 | | | | | | | | | | | | |
| | | | 26-03-4094 | 6442-R9-D | 4 | | | | | | | | | | | | |
| | | | 26-03-4052 | 6442-R5-B | 2 | | | | | | | | | | | | |
| | | | 26-03-4103 | 6442-R10-C | 3 | | | | | | | | | | | | |
| | | | 26-03-4042 | 6442-R4-B | 2 | | | | | | | | | | | | |
| | | | 26-03-4106 | 6442-R10-F | 6 | | | | | | | | | | | | |
| | | | | 6442-R12-F | 6 | | | | | | | | | | | | |
| | | | 26-03-4112 | 6442-R11-B | 2 | | | | | | | | | | | | |
| | | | | 6442-R13-B | 2 | | | | | | | | | | | | |
| | | | 26-03-4175 | 6442-R17-E | 5 | | | | | | | | | | | | |
| | | | 26-03-4102 | 6442-R10-B | 2 | | | | | | | | | | | | |
| | | | 26-03-4032 | 6442-R3-B | 2 | | | | | | | | | | | | |
| | | | 26-03-4082 | 6442-R8-B | 2 | | | | | | | | | | | | |
| | | | | 6442-R7-51 | 1,7 | | | | | | | | | | | | |
| | | | | 6442-R9-51 | 1,9 | | | | | | | | | | | | |
| | | | 26-03-4099 | 6442-R9-52 | 2,9 | | | | | | | | | | | | |
| | | | 26-03-4109 | 6442-R10-51 | 1,10 | | | | | | | | | | | | |
| | | | | 6442-R4-A | 14 | | | | | | | | | | | | |
| | | | 26-03-4152 | 6442-R15-N | 14 | | | | | | | | | | | | |
| | | | | 6442-R10-51 | 1,10 | | | | | | | | | | | | |
| | | | 26-03-4083 | 6442-R8-5 | 3 | | | | | | | | | | | | |

| | | | | | | | |
|--|---|---|--|--|---|--|------------------|
| UPDATE TITLE EC NO. ICP2009-348 DRAWING/PEER 2009/07/13 CHECK/ISSUER 2009/07/13 APPROVED/ISS 2009/07/02 J 0026034032 | QUALITY SYMBOLS ▽=0 ▽=0 | GENERAL TOLERANCES (UNLESS SPECIFIED) 4 PLACES +--- +--- 3 PLACES +--- +--- 2 PLACES +--- +--- 1 PLACE +--- +--- ANGULAR ±1/2° | DIMENSION STYLE MM/IN DRAWN BY POLGAR CHECKED BY PATEL APPROVED BY LENZ DATE 1986/12/02 DATE 1986/12/02 DATE 1986/12/02 | SCALE --- DESIGN UNITS INCH THIRD ANGLE PROJECTION | TITLE KK (3.96)/156 TRIFURCON CRIMP TERMINAL HOUSING 6442 SERIES | MATERIAL NO. SEE CHART DOCUMENT NO. SD-6442 | SHEET NO. 3 OF 4 |
| | DRAFT WHERE APPLICABLE MUST REMAIN WITHIN DIMENSIONS | | | | | | |
| | THIS DRAWING CONTAINS INFORMATION THAT IS PROPRIETARY TO MOLEX INCORPORATED AND SHOULD NOT BE USED WITHOUT WRITTEN PERMISSION | | | | | | |
| | MOLEX MOLEX INCORPORATED | | | | | | |