

Excellent Integrated System Limited

Stocking Distributor

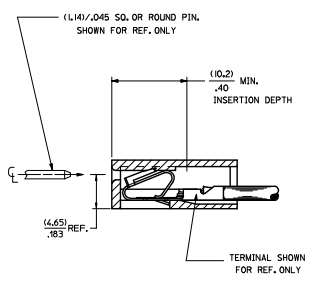
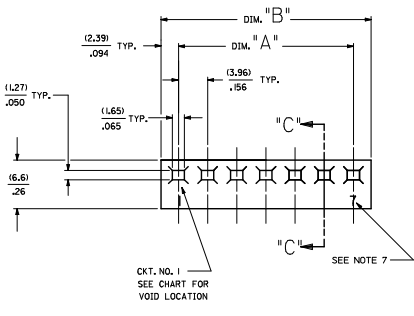
Click to view price, real time Inventory, Delivery & Lifecycle Information:

[Molex Connector Corporation](#)
[0026034211](#)

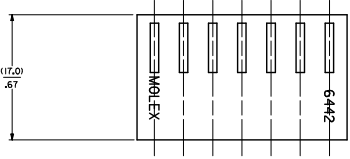
For any questions, you can email us directly:

sales@integrated-circuit.com

20 19 18 17 16 15 14 13 12 11 10 9 8 7 6 5 4 3 2 1



NO. OF CKT'S:	DIM. A	DIM. B
1	-----	(4.78±.18)
2	(3.96±.13)	(.188±.007)
3	(.56±.005)	(.344±.007)
4	(.792±.13)	(.1270±.18)
5	(.32±.005)	(.500±.007)
6	(.1189±.13)	(.1665±.18)
7	(.468±.005)	(.656±.007)
8	(.5.85±.13)	(.20.62±.18)
9	(.624±.005)	(.872±.007)
10	(.19.81±.13)	(.24.59±.18)
11	(.780±.005)	(.968±.007)
12	(.23.77±.13)	(.28.55±.18)
13	(.296±.005)	(.1.24±.007)
14	(.27.74±.25)	(.32.51±.30)
15	(.1.092±.010)	(.1.280±.012)
16	(.31.10±.25)	(.35.47±.30)
17	(.2.48±.010)	(.2.436±.012)
18	(.35.66±.25)	(.40.44±.30)
19	(.1.404±.010)	(.1.592±.012)
20	(.17.85±.30)	(.44.40±.30)
21	(.1.560±.010)	(.1.748±.012)
22	(.43.59±.25)	(.48.36±.30)
23	(.1.76±.010)	(.1.904±.012)
24	(.1.872±.012)	(.2.060±.014)
	(.15.15±.36)	(.16.29±.41)
	(.2.028±.014)	(.2.216±.016)
	(.58.17±.36)	(.60.25±.41)
	(.2.18±.014)	(.2.372±.016)
	(.59.44±.36)	(.64.21±.41)
	(.2.340±.014)	(.2.528±.016)
	(.63.40±.36)	(.68.17±.41)
	(.2.496±.014)	(.2.684±.016)
	(.67.36±.36)	(.72.14±.41)
	(.2.652±.014)	(.2.840±.016)
	(.71.32±.36)	(.76.10±.41)
	(.2.808±.014)	(.2.996±.016)
	(.75.29±.46)	(.80.06±.51)
	(.2.964±.018)	(.3.152±.020)
	(.79.25±.46)	(.84.02±.51)
	(.3.120±.018)	(.3.308±.020)
	(.83.21±.46)	(.87.99±.51)
	(.3.276±.018)	(.3.464±.020)
	(.87.17±.46)	(.91.95±.51)
	(.3.432±.018)	(.3.620±.020)
	(.91.14±.46)	(.95.91±.51)
	(.3.588±.018)	(.3.776±.020)



- NOTES:
1. MATERIAL A: NYLON 6/6 UL94V-2. COLOR: NATURAL
 2. FINISH: N/A
 3. THIS PART COMPLIES WITH PRODUCT SPECIFICATION PS-40-02.
 4. PACKAGING SPECIFICATIONS PK-6442-001
 5. HOUSING SHOWN ABOVE IS STANDARD HOUSING WITH NO OPTIONS.
 6. THIS HOUSING FOR USE WITH TERMINAL NO. 45570-*, 18-20 GAJ WITH (3.32)/.123 MAX. INSULATION DIA. 6838-*, 18-24 GAJ WITH (2.79)/.110 MAX. INSULATION DIA. 7258-*, (22-26 GAJ) WITH (1.65)/.065 MAX. INSULATION DIA.
 7. LAST CIRCUIT ID. NOT PRESENT ON 2-3 CIRCUIT HOUSINGS AND MAY OR MAY NOT BE PRESENT ON 4 CIRCUIT HOUSINGS AND LARGER.
 8. THIS PART CONFORMS TO CLASS B REQUIREMENTS OF COSMETIC SPECIFICATION PS-45499-002.
 9. SEE SHEET 2 FOR OPTIONS.

6442- * N - * * *

CODE	HOOKS	SIDE HOOKS	RAMP
BLANK	NONE	NONE	NONE
A	NONE	YES	NONE
R	NONE	NONE	FRICTION
B	NONE	NONE	TYPE B
C	NONE	NONE	TYPE C

VOLTAGE RATING OPTION
BLANK=NONE
V= *250 VAC* ON HOUSING

MAT'L. OPTION
BLANK= MATERIAL A (SEE NOTE 1)

MOLDED VOID CODE
2=NO VOIDS
A=CKT. 1 VOID,
B=CKT. 2 VOID, ETC.
5=1ST MULTIPLE VOID,
52=2ND MULTIPLE VOID, ETC.

NO. OF CKT'S.

QUALITY SYMBOLS	GENERAL TOLERANCES (UNLESS SPECIFIED)	DIMENSION STYLE	SCALE	DESIGN UNITS	THIRD ANGLE PROJECTION
▽=0	4 PLACES ±.010	MM/INCH	---	INCH	☉
▽=0	3 PLACES ±.010				
▽=0	2 PLACES ±0.25 ±.014				
▽=0	1 PLACE ±0.36				
▽=0	0 PLACE				

REVISION NOTE 7
EC MOLLEP2005-4588
DRAWN/INSPER 2005/05/04
CHKD/QUILEN 2005/06/04
APPROVED/LENZ 2005/07/03

QUALITY SYMBOLS: 4 PLACES ±.010, 3 PLACES ±.010, 2 PLACES ±0.25 ±.014, 1 PLACE ±0.36, 0 PLACE

GENERAL TOLERANCES (UNLESS SPECIFIED): mm, INCH

DIMENSION STYLE: MM/INCH

SCALE: ---

DESIGN UNITS: INCH

THIRD ANGLE PROJECTION: ☉

DRAWN BY: POLGAR DATE: 1986/12/03

CHECKED BY: PATEL DATE: 1986/12/03

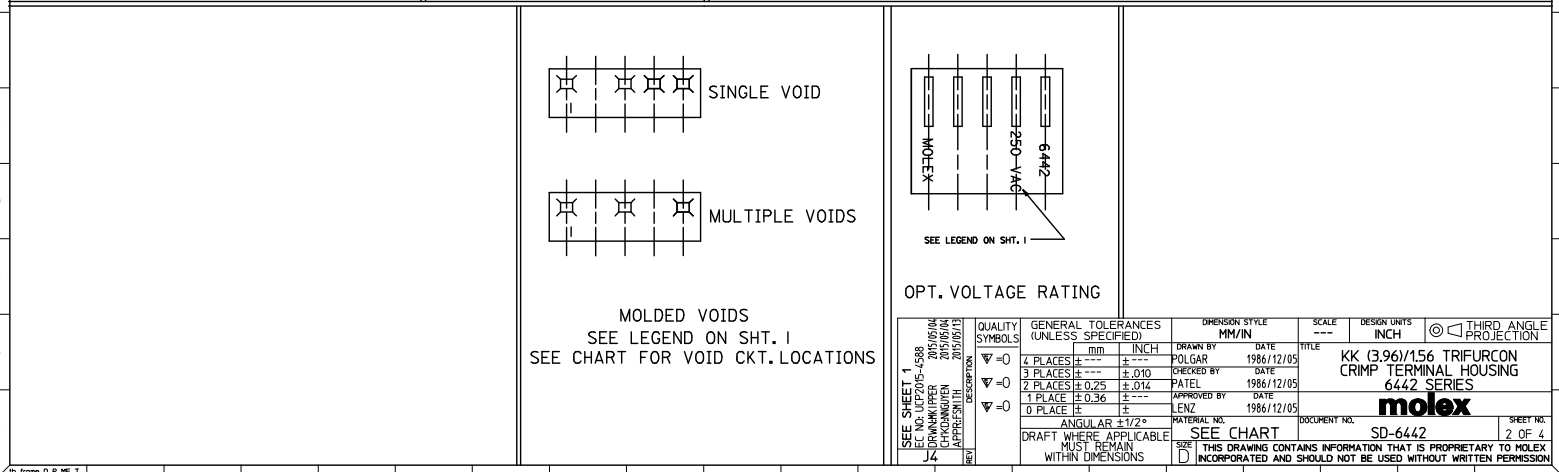
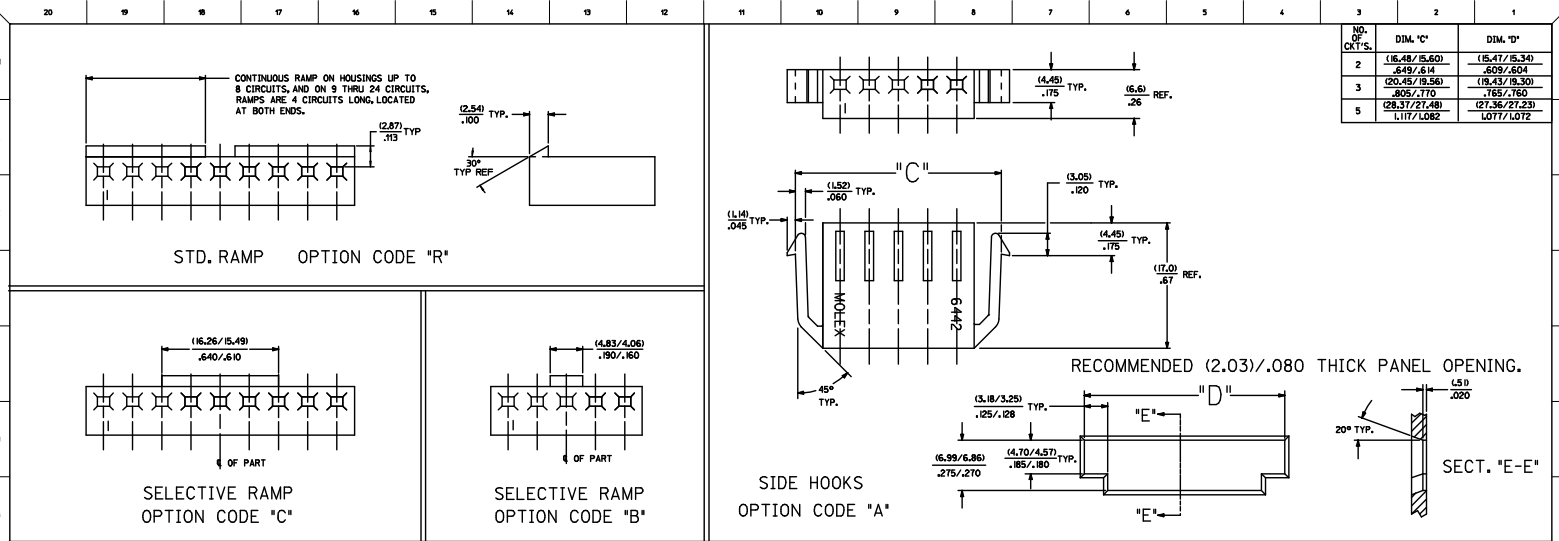
APPROVED BY: LENZ DATE: 1986/12/03

MATERIAL NO. SEE CHART

DOCUMENT NO. SD-6442

SHEET NO. 1 OF 4

INCORPORATED AND SHOULD NOT BE USED WITHOUT WRITTEN PERMISSION



molex

SD-6442

2 OF 4

