

Excellent Integrated System Limited

Stocking Distributor

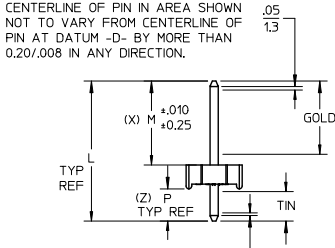
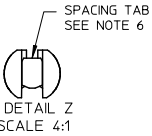
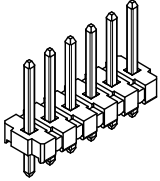
Click to view price, real time Inventory, Delivery & Lifecycle Information:

[Molex Connector Corporation](#)
[0026481190](#)

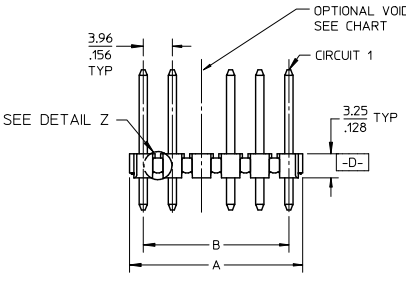
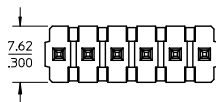
For any questions, you can email us directly:

sales@integrated-circuit.com

10 9 8 7 6 5 4 3 2 1

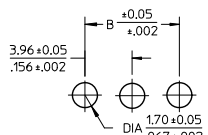


CENTERLINE OF PIN IN AREA SHOWN NOT TO VARY FROM CENTERLINE OF PIN AT DATUM -D- BY MORE THAN 0.13/005 IN ANY DIRECTION.



PACKAGING & OPTIONS
B=BRASS-BULK PACKED
NO. OF CKTS.

VOID CODE
BLANK=NO VOIDS
NO=CKT NO. VOIDED
MULT. VOIDS START WITH #51
PLATING CODE
PIN DIMENSIONS



PCB LAYOUT: COMPONENT SIDE
RECOMMENDED PCB THICKNESS:
1.57+.18/.062+.007

B	A	CKT SIZE
3.96/156	6.78-7.87 / .267-.310	2
7.92/312	10.74-11.84 / .423-.466	3
11.89/468	14.71-15.80 / .579-.622	4
15.85/624	18.67-19.76 / .735-.778	5
19.81/780	22.63-23.72 / .891-.934	6
23.77/936	26.59-27.69 / 1.047-1.090	7
27.74/1092	30.56-31.65 / 1.203-1.246	8
31.70/1248	34.52-35.61 / 1.359-1.402	9
35.66/1404	38.48-39.57 / 1.515-1.558	10
39.62/1560	42.44-43.54 / 1.671-1.714	11
43.59/1716	46.41-47.50 / 1.827-1.870	12
47.55/1872	50.37-51.46 / 1.983-2.026	13
51.51/2028	54.33-55.42 / 2.139-2.182	14
55.47/2184	58.29-59.39 / 2.295-2.338	15
59.44/2340	62.26-63.35 / 2.451-2.494	16
63.40/2496	66.22-67.31 / 2.607-2.650	17
67.36/2652	70.18-71.27 / 2.763-2.806	18
71.32/2808	74.14-75.23 / 2.919-2.962	19
75.29/2964	78.11-79.20 / 3.075-3.118	20
79.25/3120	82.07-83.16 / 3.231-3.274	21
83.21/3276	86.03-87.12 / 3.387-3.430	22
87.17/3432	89.94-91.08 / 3.541-3.586	23
91.14/3588	93.85-95.00 / 3.695-3.740	24

- NOTES:
- MATERIAL: HEADER: GLASS FILLED POLYESTER, 94V-0, MOLDED BLACK.
 - FINISH:
 - (197) OVERALL REFLOWED MATTE TIN: 0.00152/.000060 MIN OVER 0.00127/.000050 MIN. NICKEL OVERALL.
 - (222) OVERALL MATTE TIN: 0.00254/.000100 MIN OVER 0.00127/.000050 MIN NICKEL
 - (208) SELECT GOLD: 0.00038/.000015 MIN. SELECT TIN: 0.00254/.000100 MIN. OVERALL NICKEL UNDERPLATE: 0.00127/.000050 MIN.
 - (228) SELECT GOLD: 0.00076/.000030 MIN. SELECT TIN: 0.00254/.000100 MIN. OVERALL NICKEL UNDERPLATE: 0.00127/.000050 MIN.
 - (241) SELECT GOLD: 0.00051/.000020 MIN. SELECT TIN: 0.00254/.000100 MIN. OVERALL NICKEL UNDERPLATE: 0.00127/.000050 MIN.
 - THIS PART CONFORMS TO PRODUCT SPEC PS-08-50.
 - PACKAGING: SEE CHARTS.
 - SOLDERABILITY: SEE SMES 152.
 - PARTS ARE STACKABLE END TO END ON 3.96/.156 CENTERS. (SPACING TABS MUST BE REMOVED ON CIRCUIT SIZES 2 THRU 23 BEFORE PARTS ARE STACKABLE.)
 - THIS PART CONFORMS TO CLASS B REQUIREMENTS OF COSMETIC SPECIFICATION PS-45499-002.
 - PIN PUSH-OUT FORCE: PRIOR TO SOLDERING, A 3 LB MINIMUM FORCE (IN EITHER DIRECTION) SHALL BE REQUIRED TO PUSH THE PIN OUT OF THE HEADER.

DRAWING FORMAT	SHEETS	REV LEVEL
GENERAL DOCS.	2-*	BE
ANNOTATOR	1	

ADD FINISH 197 EC NO: UCP2012-0114 DRAWN BY: BRUNNENSTROH 2011/07/19 CHECKED BY: CHROKHOPPER 2011/10/21 APPROVED BY: APPREH/SJL/TH 2011/10/20	QUALITY SYMBOLS ∇=0 ∇=0 ∇=0	GENERAL TOLERANCES (UNLESS SPECIFIED)		DIMENSION STYLE		SCALE	DESIGN UNITS	THIRD ANGLE PROJECTION
		mm	INCH	MM/IN	2:1	INCH		
DRAFT WHERE APPLICABLE MUST REMAIN WITHIN DIMENSIONS	SEE CHART	4 PLACES ± .005	± .005	DRAWN BY	DATE	TITLE KK .156 HEADER ASSEMBLY FLAT BREAKAWAY 2-24 CKTS		
		3 PLACES ± .010	± .010	JSCHAFFER	2004/03/04			
		2 PLACES ± 0.25	± .014	CHECKED BY	DATE	MOLEX INCORPORATED SD-41661-001		
		1 PLACE ± 0.36	± .014	KSAMIEC	2004/03/04			
		ANGULAR ±1/2°		APPROVED BY	DATE	DOCUMENT NO. 1 OF *		
				MARGULIS	2004/03/04			
				MATERIAL NO.		THIS DRAWING CONTAINS INFORMATION THAT IS PROPRIETARY TO MOLEX INCORPORATED AND SHOULD NOT BE USED WITHOUT WRITTEN PERMISSION		
				SEE CHART				

9 8 7 6 5 4 3 2 1