

## **Excellent Integrated System Limited**

Stocking Distributor

Click to view price, real time Inventory, Delivery & Lifecycle Information:

[Molex Connector Corporation](#)  
[0026484045](#)

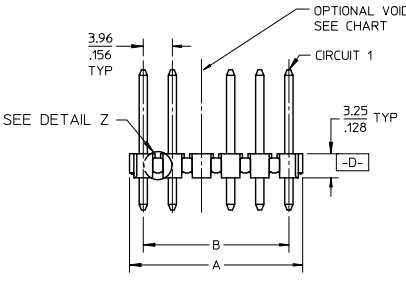
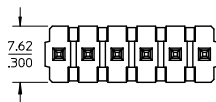
For any questions, you can email us directly:

[sales@integrated-circuit.com](mailto:sales@integrated-circuit.com)

10 9 8 7 6 5 4 3 2 1



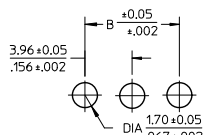
CENTERLINE OF PIN IN AREA SHOWN NOT TO VARY FROM CENTERLINE OF PIN AT DATUM -D- BY MORE THAN 0.13/005 IN ANY DIRECTION.



B	A	CKT SIZE
3.96/.156	6.78-.787 / .267-.310	2
7.92/.312	10.74-.1184 / .423-.466	3
11.89/.468	14.71-.15.80 / .579-.622	4
15.85/.624	18.67-.19.76 / .735-.778	5
19.81/.780	22.63-.23.72 / .891-.934	6
23.77/.936	26.59-.27.69 / 1.047-.1090	7
27.74/1.092	30.56-.31.65 / 1.203-1.246	8
31.70/1.248	34.52-.35.61 / 1.359-1.402	9
35.66/1.404	38.48-.39.57 / 1.515-1.558	10
39.62/1.560	42.44-.43.54 / 1.671-1.714	11
43.59/1.716	46.41-.47.50 / 1.827-1.870	12
47.55/1.872	50.37-.51.46 / 1.983-2.026	13
51.51/2.028	54.33-.55.42 / 2.139-2.182	14
55.47/2.184	58.29-.59.39 / 2.295-2.338	15
59.44/2.340	62.26-.63.35 / 2.451-2.494	16
63.40/2.496	66.22-.67.31 / 2.607-2.650	17
67.36/2.652	70.18-.71.27 / 2.763-2.806	18
71.32/2.808	74.14-.75.23 / 2.919-2.962	19
75.29/2.964	78.11-.79.20 / 3.075-3.118	20
79.25/3.120	82.07-.83.16 / 3.231-3.274	21
83.21/3.276	86.03-.87.12 / 3.387-3.430	22
87.17/3.432	89.94-.91.08 / 3.541-3.586	23
91.14/3.588	93.85-.95.00 / 3.695-3.740	24

- NOTES:
- MATERIAL: HEADER: GLASS FILLED POLYESTER, 94V-0, MOLDED BLACK.
  - FINISH:
    - (197) OVERALL REFLOWED MATTE TIN: 0.00152/.000060 MIN OVER 0.00127/.000050 MIN. NICKEL OVERALL.
    - (222) OVERALL MATTE TIN: 0.00254/.000100 MIN OVER 0.00127/.000050 MIN NICKEL
    - (208) SELECT GOLD: 0.00038/.000015 MIN. SELECT TIN: 0.00254/.000100 MIN. OVERALL NICKEL UNDERPLATE: 0.00127/.000050 MIN.
    - (228) SELECT GOLD: 0.00076/.000030 MIN. SELECT TIN: 0.00254/.000100 MIN. OVERALL NICKEL UNDERPLATE: 0.00127/.000050 MIN.
    - (241) SELECT GOLD: 0.00051/.000020 MIN. SELECT TIN: 0.00254/.000100 MIN. OVERALL NICKEL UNDERPLATE: 0.00127/.000050 MIN.
  - THIS PART CONFORMS TO PRODUCT SPEC PS-08-50.
  - PACKAGING: SEE CHARTS.
  - SOLDERABILITY: SEE SMES 152.
  - PARTS ARE STACKABLE END TO END ON 3.96/.156 CENTERS. (SPACING TABS MUST BE REMOVED ON CIRCUIT SIZES 2 THRU 23 BEFORE PARTS ARE STACKABLE.)
  - THIS PART CONFORMS TO CLASS B REQUIREMENTS OF COSMETIC SPECIFICATION PS-45499-002.
  - PIN PUSH-OUT FORCE: PRIOR TO SOLDERING, A 3 LB MINIMUM FORCE (IN EITHER DIRECTION) SHALL BE REQUIRED TO PUSH THE PIN OUT OF THE HEADER.

A-41661- \* N \* \* - \*  
 NO. OF CKTS.      [VOID CODE]      BLANK=NO VOIDS  
 NO=CKT NO. VOIDED      MULT. VOIDS START WITH #51  
 PLATING CODE



PCB LAYOUT: COMPONENT SIDE  
 RECOMMENDED PCB THICKNESS:  
 1.57+.18/.062+.007

DRAWING FORMAT	SHEETS	REV LEVEL
GENERAL DOCS.	2-*	BE
ANNOTATOR	1	

ADD FINISH 197 EC NO: UCP2012-0114 DRAWN BY: BRUNNENSTROH 2011/07/19 CHECKED BY: CHROKHOPPER 2011/10/21 APPROVED BY: APPREH/SJL/TH 2011/10/20	QUALITY SYMBOLS ∇=0 ∇=0 ∇=0	GENERAL TOLERANCES (UNLESS SPECIFIED)		DIMENSION STYLE MM/IN		SCALE 2:1	DESIGN UNITS INCH	THIRD ANGLE PROJECTION
		4 PLACES ± --- ± --- 3 PLACES ± --- ± .010 2 PLACES ± 0.25 ± .014 1 PLACE ± 0.36 ± --- ANGULAR ±1/2°	DRAWN BY JSCHAFFER 2004/03/04 CHECKED BY KSAMIEC 2004/03/04 APPROVED BY MARGULIS 2004/03/04	TITLE KK .156 HEADER ASSEMBLY FLAT BREAKAWAY 2-24 CKTS				
DRAFT WHERE APPLICABLE MUST REMAIN WITHIN DIMENSIONS		MATERIAL NO. SEE CHART		MOLEX INCORPORATED		DOCUMENT NO. SD-41661-001		SHEET NO. 1 OF *

9 8 7 6 5 4 3 2 1