

Excellent Integrated System Limited

Stocking Distributor

Click to view price, real time Inventory, Delivery & Lifecycle Information:

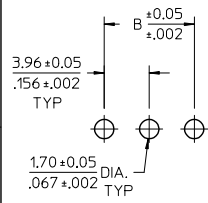
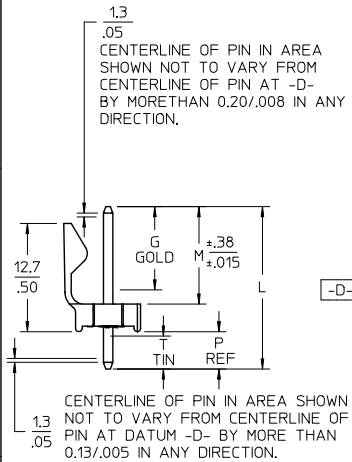
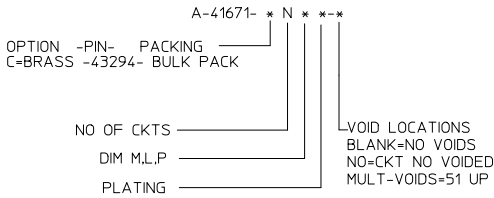
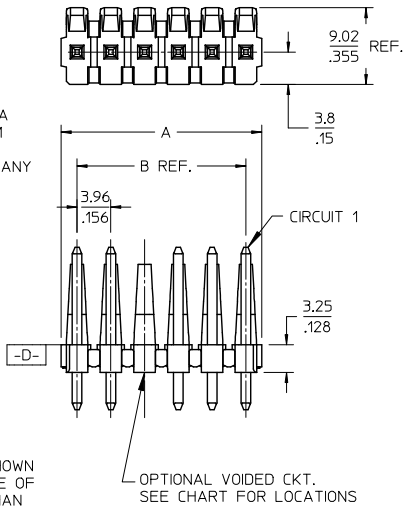
[Molex Connector Corporation](#)
[0026503087](#)

For any questions, you can email us directly:

sales@integrated-circuit.com

| CKT | B | A |
|-----|----------------|----------------------------|
| 1 | 3.96 .156 | 6.78/7.87 .267/1.310 |
| 2 | 7.92 .312 | 10.74/11.84 .423/1.466 |
| 3 | 11.89 .468 | 14.71/15.80 .579/1.622 |
| 4 | 15.85 .624 | 18.67/19.76 .735/1.778 |
| 5 | 19.81 .780 | 22.63/23.72 .891/1.934 |
| 6 | 23.77 .936 | 26.59/27.69 1.047/1.090 |
| 7 | 27.74 1.092 | 30.56/31.65 1.203/1.246 |
| 8 | 31.70 1.248 | 34.52/35.61 1.359/1.402 |
| 9 | 35.66 1.404 | 38.48/39.57 1.515/1.558 |
| 10 | 39.62 1.560 | 42.44/43.54 1.671/1.714 |
| 11 | 43.59 1.716 | 46.41/47.50 1.827/1.870 |
| 12 | 47.55 1.872 | 50.37/51.46 1.983/2.026 |
| 13 | 51.51 2.028 | 54.33/55.42 2.139/2.182 |
| 14 | 55.47 2.184 | 58.29/59.39 2.295/2.338 |
| 15 | 59.44 2.340 | 62.26/63.35 2.451/2.494 |
| 16 | 63.40 2.496 | 66.22/67.31 2.607/2.650 |
| 17 | 67.36 2.652 | 70.18/71.27 2.763/2.806 |
| 18 | 71.32 2.808 | 74.14/75.23 2.919/2.962 |
| 19 | 75.29 2.964 | 78.11/79.20 3.075/3.118 |
| 20 | 79.25 3.120 | 82.07/83.16 3.231/3.274 |
| 21 | 83.21 3.276 | 86.03/87.12 3.387/3.430 |
| 22 | 87.17 3.432 | 89.94/91.08 3.541/3.586 |
| 23 | 91.14 3.588 | 93.85/95.00 3.695/3.740 |
| 24 | | |

- NOTES:
- MATERIAL: POLYESTER, 94V-0, MOLDED BLACK
 - FINISH: PER ES-88
 - (197) OVERALL REFLOWED MATTE TIN: 0.00152/.000060 MIN. OVER 0.00127/.000050 MIN. NICKEL OVERALL
 - (222) OVERALL MATTE TIN: 0.00254/.000100 MIN OVERALL NICKEL: 0.00127/.000050 MIN.
 - (208) SELECT GOLD: 0.00038/.000015 MIN. SELECT TIN: 0.00254/.000100 MIN. OVERALL NICKEL UNDERPLATE: 0.00127/.000050 MIN.
 - (228) SELECT GOLD: 0.00076/.000030 MIN. SELECT TIN: 0.00254/.000100 MIN. OVERALL NICKEL UNDERPLATE: 0.00127/.000050 MIN.
 - (241) SELECT GOLD: 0.00051/.000020 MIN. SELECT TIN: 0.00254/.000100 MIN. OVERALL NICKEL UNDERPLATE: 0.00127/.000050 MIN.
 - PRODUCT SPECIFICATION: PS-08-50.
 - PACKAGING INFO: SEE TABLE.
 - SOLDERABILITY: PER SMES-152.
 - PIN PUSH-OUT FORCE: PRIOR TO SOLDERING, 3 LB MIN. FORCE IN EITHER DIRECTION SHALL BE REQUIRED TO PUSH THE PIN OUT OF THE HEADER.
 - PARTS ARE STACKABLE END TO END ON 3.96/.156 CENTERS. (SPACING TABS MUST BE REMOVED ON CIRCUIT SIZES 1-23 BEFORE PARTS ARE STACKABLE.
 - THIS PART CONFORMS TO CLASS B REQUIREMENTS OF COSMETIC SPECIFICATION PS-45499-002.



PCB LAYOUT: COMPONENT SIDE
RECOMMENDED PCB THICKNESS:
1.57±.18/1.062±.007

| | |
|-----|-----|
| 2-* | AK7 |
| 1 | AK7 |
| SHT | REV |

| QUALITY SYMBOLS | GENERAL TOLERANCES (UNLESS SPECIFIED) | | DIMENSION STYLE | SCALE | DESIGN UNITS | THIRD ANGLE PROJECTION |
|-----------------|--|--------|---|---------------------------|--|------------------------|
| | mm | INCH | MM/IN | 1.5:1 | INCH | |
| ▽=0 | 4 PLACES ± --- | ± --- | DRAWN BY JSCHAFFER | DATE 2004/04/05 | TITLE KK 156 HEADER ASSEMBLY FRICTION LOCK STRAIGHT BREAKAWAY molex | |
| ▽=0 | 3 PLACES ± --- | ± .010 | CHECKED BY KSAMIEC | DATE 2004/04/05 | | |
| ▽=0 | 2 PLACES ± 0.25 | ± .015 | APPROVED BY MARGULIS | DATE 2004/04/05 | | |
| ▽=0 | 1 PLACE ± 0.38 | ± --- | MATERIAL NO. SEE CHART | DOCUMENT NO. SD-41671-001 | | |
| | ANGULAR ±1/2° | | SHEET NO. 1 OF * | | | |
| | DRAFT WHERE APPLICABLE MUST REMAIN WITHIN DIMENSIONS | | THIS DRAWING CONTAINS INFORMATION THAT IS PROPRIETARY TO MOLEX INCORPORATED AND SHOULD NOT BE USED WITHOUT WRITTEN PERMISSION | | | |