

Excellent Integrated System Limited

Stocking Distributor

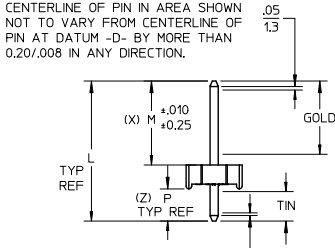
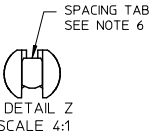
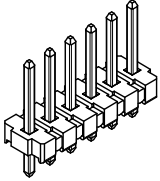
Click to view price, real time Inventory, Delivery & Lifecycle Information:

[Molex Connector Corporation](#)
[0026503089](#)

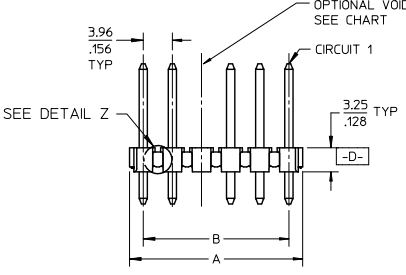
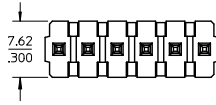
For any questions, you can email us directly:

sales@integrated-circuit.com

10 9 8 7 6 5 4 3 2 1

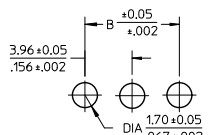


CENTERLINE OF PIN IN AREA SHOWN NOT TO VARY FROM CENTERLINE OF PIN AT DATUM -D- BY MORE THAN 0.13/005 IN ANY DIRECTION.



PACKAGING & OPTIONS
B=BRASS-BULK PACKED
NO. OF CKTS.

A-41661- * N * * - *
VOID CODE
BLANK=NO VOIDS
NO=CKT NO. VOIDED
MULT. VOIDS START WITH #51
PLATING CODE
PIN DIMENSIONS



PCB LAYOUT: COMPONENT SIDE
RECOMMENDED PCB THICKNESS:
1.57+.18/.062+.007

| B | A | CKT SIZE |
|-------------|---------------------------|----------|
| 3.96/.156 | 6.78-.787 / .267-.310 | 2 |
| 7.92/.312 | 10.74-11.84 / .423-.466 | 3 |
| 11.89/.468 | 14.71-15.80 / .579-.622 | 4 |
| 15.85/.624 | 18.67-19.76 / .735-.778 | 5 |
| 19.81/.780 | 22.63-23.72 / .891-.934 | 6 |
| 23.77/.936 | 26.59-27.69 / 1.047-1.090 | 7 |
| 27.74/1.092 | 30.56-31.65 / 1.203-1.246 | 8 |
| 31.70/1.248 | 34.52-35.61 / 1.359-1.402 | 9 |
| 35.66/1.404 | 38.48-39.57 / 1.515-1.558 | 10 |
| 39.62/1.560 | 42.44-43.54 / 1.671-1.714 | 11 |
| 43.59/1.716 | 46.41-47.50 / 1.827-1.870 | 12 |
| 47.55/1.872 | 50.37-51.46 / 1.983-2.026 | 13 |
| 51.51/2.028 | 54.33-55.42 / 2.139-2.182 | 14 |
| 55.47/2.184 | 58.29-59.39 / 2.295-2.338 | 15 |
| 59.44/2.340 | 62.26-63.35 / 2.451-2.494 | 16 |
| 63.40/2.496 | 66.22-67.31 / 2.607-2.650 | 17 |
| 67.36/2.652 | 70.18-71.27 / 2.763-2.806 | 18 |
| 71.32/2.808 | 74.14-75.23 / 2.919-2.962 | 19 |
| 75.29/2.964 | 78.11-79.20 / 3.075-3.118 | 20 |
| 79.25/3.120 | 82.07-83.16 / 3.231-3.274 | 21 |
| 83.21/3.276 | 86.03-87.12 / 3.387-3.430 | 22 |
| 87.17/3.432 | 89.94-91.08 / 3.541-3.586 | 23 |
| 91.14/3.588 | 93.85-95.00 / 3.695-3.740 | 24 |

- NOTES:
- MATERIAL: HEADER: GLASS FILLED POLYESTER, 94V-0, MOLDED BLACK.
 - FINISH:
 - (197) OVERALL REFLOWED MATTE TIN: 0.00152/.000060 MIN OVER 0.00127/.000050 MIN. NICKEL OVERALL.
 - (222) OVERALL MATTE TIN: 0.00254/.000100 MIN OVER 0.00127/.000050 MIN NICKEL
 - (208) SELECT GOLD: 0.00038/.000015 MIN. SELECT TIN: 0.00254/.000100 MIN. OVERALL NICKEL UNDERPLATE: 0.00127/.000050 MIN.
 - (228) SELECT GOLD: 0.00076/.000030 MIN. SELECT TIN: 0.00254/.000100 MIN. OVERALL NICKEL UNDERPLATE: 0.00127/.000050 MIN.
 - (241) SELECT GOLD: 0.00051/.000020 MIN. SELECT TIN: 0.00254/.000100 MIN. OVERALL NICKEL UNDERPLATE: 0.00127/.000050 MIN.
 - THIS PART CONFORMS TO PRODUCT SPEC PS-08-50.
 - PACKAGING: SEE CHARTS.
 - SOLDERABILITY: SEE SMES 152.
 - PARTS ARE STACKABLE END TO END ON 3.96/.156 CENTERS. (SPACING TABS MUST BE REMOVED ON CIRCUIT SIZES 2 THRU 23 BEFORE PARTS ARE STACKABLE.)
 - THIS PART CONFORMS TO CLASS B REQUIREMENTS OF COSMETIC SPECIFICATION PS-45499-002.
 - PIN PUSH-OUT FORCE: PRIOR TO SOLDERING, A 3 LB MINIMUM FORCE (IN EITHER DIRECTION) SHALL BE REQUIRED TO PUSH THE PIN OUT OF THE HEADER.

| | | |
|----------------|--------|-----------|
| DRAWING FORMAT | SHEETS | REV LEVEL |
| GENERAL DOCS. | 2-* | BE |
| ANNOTATOR | 1 | |

| ADD FINISH 197 EC NO: UCP2012-0114 DRAWN BY: BRUNNENSTROH 2011/07/19 CHECKED BY: CHROKHOPPER 2011/10/21 APPROVED BY: APPREH/SHT/TH 2011/10/20 REV | QUALITY SYMBOLS ▽=0 ▽=0 ▽=0 | GENERAL TOLERANCES (UNLESS SPECIFIED) <table border="1"> <tr><th></th><th>mm</th><th>INCH</th></tr> <tr><td>4 PLACES</td><td>± .---</td><td>± .---</td></tr> <tr><td>3 PLACES</td><td>± .---</td><td>± .010</td></tr> <tr><td>2 PLACES</td><td>± 0.25</td><td>± .014</td></tr> <tr><td>1 PLACE</td><td>± 0.36</td><td>± .---</td></tr> </table> ANGULAR ±1/2° DRAFT WHERE APPLICABLE MUST REMAIN WITHIN DIMENSIONS | | mm | INCH | 4 PLACES | ± .--- | ± .--- | 3 PLACES | ± .--- | ± .010 | 2 PLACES | ± 0.25 | ± .014 | 1 PLACE | ± 0.36 | ± .--- | DIMENSION STYLE MM/IN DRAWN BY JSCHAFFER DATE 2004/03/04 CHECKED BY DATE KSAMIEC 2004/03/04 APPROVED BY DATE MARGULIS 2004/03/04 MATERIAL NO. SEE CHART | SCALE 2:1 DESIGN UNITS INCH THIRD ANGLE PROJECTION | TITLE KK .156 HDR ASSY FLAT BKWY 8POS 2-24 CKTS MOLEX MOLEX INCORPORATED DOCUMENT NO. SD-41661-001 SHEET NO. 1 OF * |
|--|--------------------------------------|--|--|----|------|----------|--------|--------|----------|--------|--------|----------|--------|--------|---------|--------|--------|--|--|--|
| | | | | mm | INCH | | | | | | | | | | | | | | | |
| 4 PLACES | ± .--- | ± .--- | | | | | | | | | | | | | | | | | | |
| 3 PLACES | ± .--- | ± .010 | | | | | | | | | | | | | | | | | | |
| 2 PLACES | ± 0.25 | ± .014 | | | | | | | | | | | | | | | | | | |
| 1 PLACE | ± 0.36 | ± .--- | | | | | | | | | | | | | | | | | | |
| THIS DRAWING CONTAINS INFORMATION THAT IS PROPRIETARY TO MOLEX INCORPORATED AND SHOULD NOT BE USED WITHOUT WRITTEN PERMISSION | | | | | | | | | | | | | | | | | | | | |

9 8 7 6 5 4 3 2 1