

Excellent Integrated System Limited

Stocking Distributor

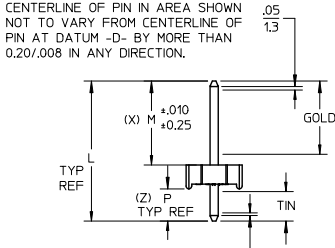
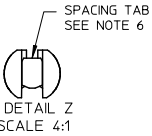
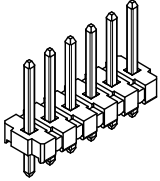
Click to view price, real time Inventory, Delivery & Lifecycle Information:

[Molex Connector Corporation](#)
[0026584060](#)

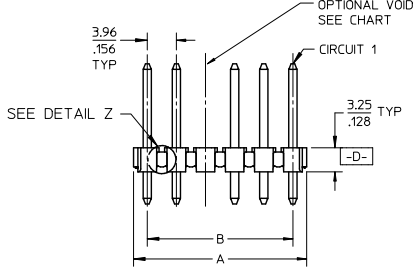
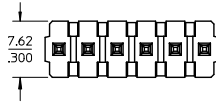
For any questions, you can email us directly:

sales@integrated-circuit.com

10 9 8 7 6 5 4 3 2 1

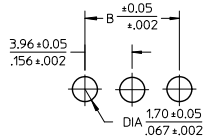


CENTERLINE OF PIN IN AREA SHOWN NOT TO VARY FROM CENTERLINE OF PIN AT DATUM -D- BY MORE THAN 0.13/005 IN ANY DIRECTION.



PACKAGING & OPTIONS
B=BRASS-BULK PACKED
NO. OF CKTS. * N * * *
VOID CODE
BLANK=NO VOIDS
NO=CKT NO. VOIDED
MULT. VOIDS START WITH #51
PLATING CODE
PIN DIMENSIONS

| B | A | CKT SIZE |
|-------------|----------------------------|----------|
| 3.96/.156 | 6.78-.787 / .267-.310 | 2 |
| 7.92/.312 | 10.74-.1184 / .423-.466 | 3 |
| 11.89/.468 | 14.71-.15.80 / .579-.622 | 4 |
| 15.85/.624 | 18.67-.19.76 / .735-.778 | 5 |
| 19.81/.780 | 22.63-.23.72 / .891-.934 | 6 |
| 23.77/.936 | 26.59-.27.69 / 1.047-.1090 | 7 |
| 27.74/1.092 | 30.56-.31.65 / 1.203-1.246 | 8 |
| 31.70/1.248 | 34.52-.35.61 / 1.359-1.402 | 9 |
| 35.66/1.404 | 38.48-.39.57 / 1.515-1.558 | 10 |
| 39.62/1.560 | 42.44-.43.54 / 1.671-1.714 | 11 |
| 43.59/1.716 | 46.41-.47.50 / 1.827-1.870 | 12 |
| 47.55/1.872 | 50.37-.51.46 / 1.983-2.026 | 13 |
| 51.51/2.028 | 54.33-.55.42 / 2.139-2.182 | 14 |
| 55.47/2.184 | 58.29-.59.39 / 2.295-2.338 | 15 |
| 59.44/2.340 | 62.26-.63.35 / 2.451-2.494 | 16 |
| 63.40/2.496 | 66.22-.67.31 / 2.607-2.650 | 17 |
| 67.36/2.652 | 70.18-.71.27 / 2.763-2.806 | 18 |
| 71.32/2.808 | 74.14-.75.23 / 2.919-2.962 | 19 |
| 75.29/2.964 | 78.11-.79.20 / 3.075-3.118 | 20 |
| 79.25/3.120 | 82.07-.83.16 / 3.231-3.274 | 21 |
| 83.21/3.276 | 86.03-.87.12 / 3.387-3.430 | 22 |
| 87.17/3.432 | 89.94-.91.08 / 3.541-3.586 | 23 |
| 91.14/3.588 | 93.85-.95.00 / 3.695-3.740 | 24 |



PCB LAYOUT: COMPONENT SIDE
RECOMMENDED PCB THICKNESS:
1.57+.18/.062+.007

- NOTES:
- MATERIAL: HEADER: GLASS FILLED POLYESTER, 94V-0, MOLDED BLACK.
 - FINISH:
 - (197) OVERALL REFLOWED MATTE TIN: 0.00152/.000060 MIN OVER 0.00127/.000050 MIN. NICKEL OVERALL.
 - (222) OVERALL MATTE TIN: 0.00254/.000100 MIN OVER 0.00127/.000050 MIN NICKEL
 - (208) SELECT GOLD: 0.00038/.000015 MIN. SELECT TIN: 0.00254/.000100 MIN. OVERALL NICKEL UNDERPLATE: 0.00127/.000050 MIN.
 - (228) SELECT GOLD: 0.00076/.000030 MIN. SELECT TIN: 0.00254/.000100 MIN. OVERALL NICKEL UNDERPLATE: 0.00127/.000050 MIN.
 - (241) SELECT GOLD: 0.00051/.000020 MIN. SELECT TIN: 0.00254/.000100 MIN. OVERALL NICKEL UNDERPLATE: 0.00127/.000050 MIN.
 - THIS PART CONFORMS TO PRODUCT SPEC PS-08-50.
 - PACKAGING: SEE CHARTS.
 - SOLDERABILITY: SEE SMES 152.
 - PARTS ARE STACKABLE END TO END ON 3.96/.156 CENTERS. (SPACING TABS MUST BE REMOVED ON CIRCUIT SIZES 2 THRU 23 BEFORE PARTS ARE STACKABLE.)
 - THIS PART CONFORMS TO CLASS B REQUIREMENTS OF COSMETIC SPECIFICATION PS-45499-002.
 - PIN PUSH-OUT FORCE: PRIOR TO SOLDERING, A 3 LB MINIMUM FORCE (IN EITHER DIRECTION) SHALL BE REQUIRED TO PUSH THE PIN OUT OF THE HEADER.

| | | |
|----------------|--------|-----------|
| DRAWING FORMAT | SHEETS | REV LEVEL |
| GENERAL DOCS. | 2-* | BE |
| ANNOTATOR | 1 | |

| | | | | | | | |
|--|--------------------------------------|---|--|--|---|--|---------------------|
| ADD FINISH 197 EC NO: UCP2012-0114 DRAWN BY: BRUNNENSTROH 2011/07/19 CHECKED BY: CHROCHMAYER 2011/07/21 APPROVED BY: APPREIF-SHULTH 2011/07/20 | QUALITY SYMBOLS ∇=0 ∇=0 ∇=0 | GENERAL TOLERANCES (UNLESS SPECIFIED) mm INCH 4 PLACES ± --- ± --- 3 PLACES ± --- ± .010 2 PLACES ± 0.25 ± .014 1 PLACE ± 0.36 ± --- ANGULAR ± 1/2° | DIMENSION STYLE MM/IN DRAWN BY: JSCHAFFER 2004/03/04 CHECKED BY: KSAMIEC 2004/03/04 APPROVED BY: MARGULIS 2004/03/04 | SCALE 2:1 DESIGN UNITS INCH THIRD ANGLE PROJECTION | TITLE KK .156 HEADER ASSEMBLY FLAT BREAKAWAY 2-24 CKTS | MOLEX INCORPORATED DOCUMENT NO. SD-41661-001 | SHEET NO. 1 OF * |
| | | | | | | | |

9 8 7 6 5 4 3 2 1