

## Excellent Integrated System Limited

Stocking Distributor

Click to view price, real time Inventory, Delivery & Lifecycle Information:

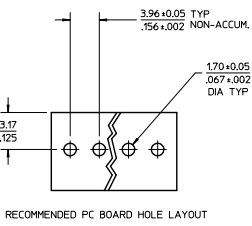
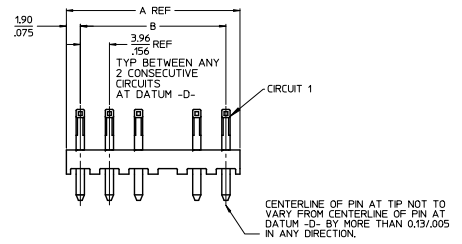
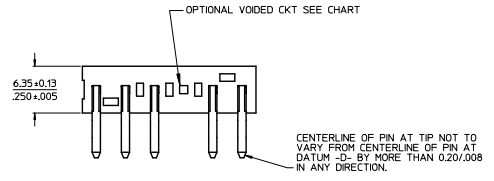
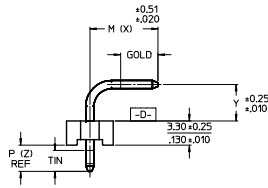
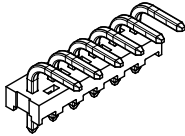
[Molex Connector Corporation](#)  
[0026603040](#)

For any questions, you can email us directly:

[sales@integrated-circuit.com](mailto:sales@integrated-circuit.com)

CKT	DIM. A	DIM. B
2	7.77	3.96±0.05
	.306	.156±.002
3	11.23	7.92±0.08
	.462	.312±.003
4	15.70	11.89±0.08
	.618	.468±.003
5	19.66	15.35±0.10
	.774	.624±.004
6	23.62	19.81±0.10
	.930	.780±.004
7	27.58	23.77±0.10
	1.086	.936±.004
8	31.55	27.74±0.13
	1.242	1.092±.005
9	35.51	31.70±0.13
	1.398	1.248±.005
10	39.47	35.66±0.13
	1.554	1.404±.005
11	43.43	39.62±0.15
	1.710	1.560±.006
12	47.40	43.59±0.15
	1.866	1.716±.006
13	51.36	47.55±0.15
	2.022	1.872±.006
14	55.32	51.51±0.18
	2.178	2.028±.007
15	59.28	55.47±0.18
	2.334	2.184±.007
16	63.25	59.44±0.18
	2.490	2.340±.007
17	67.21	63.40±0.20
	2.646	2.496±.008
18	71.17	67.36±0.20
	2.802	2.652±.008

- NOTES:  
 1. MATERIAL: HEADER-GLASS FILLED POLYESTER, 94V-0, MOLDED NATURAL (WHITE).  
 2. FINISH:  
 (154) OVERALL TIN: 0.00254/.000100 MIN OVER 0.00127/.000050 MIN NICKEL.  
 (197) OVERALL REFLOWED MATTE TIN: 0.00152/.000060 MIN.  
 OVER 0.00127/.000050 MIN. NICKEL OVERALL.  
 (208) SELECT GOLD: 0.00038/.000015 MIN, SELECT TIN: 0.00254/.000100 MIN.  
 OVERALL NICKEL UNDERPLATE: 0.00127/.000050 MIN.  
 (228) SELECT GOLD: 0.00076/.000030 MIN, SELECT TIN: 0.00254/.000100 MIN.  
 OVERALL NICKEL UNDERPLATE: 0.00127/.000050 MIN.  
 (241) SELECT GOLD: 0.00051/.000020 MIN.  
 SELECT TIN: 0.00254/.000100 MIN.  
 OVERALL NICKEL UNDERPLATE: 0.00127/.000050 MIN.  
 3. PRODUCT SPECIFICATION AND PROCESS PARAMETERS: SEE PS-08-50.  
 4. PACKAGING: SEE CHART  
 5. SOLDERABILITY: PER SMES-152.  
 6. PIN PUSH-OUT FORCE: PRIOR TO SOLDERING, A 3 LB. MINIMUM FORCE (IN EITHER DIRECTION)  
 7. PARTS ARE STACKABLE END TO END ON 3.96/.156 CENTERS.  
 8. THIS PART CONFORMS TO CLASS B REQUIREMENTS OF COSMETIC SPECIFICATION PS-45499-002.



2-*	M1
1	M1
SHEET	REV

ADD 41772-0682	QUALITY SYMBOLS
EC NO: UCP2012-3876	▽=0
DRAWN/PPER 2012/05/25	▽=0
CHKD/BELL 2012/05/25	▽=0
APPR/SMITH 2012/06/20	
DESCRIPTION	
M1	REV

GENERAL TOLERANCES (UNLESS SPECIFIED)	
	mm INCH
4 PLACES ± .010	± .0004
3 PLACES ± .015	± .0006
2 PLACES ± .025	± .0010
1 PLACE ± 0.38	± .0150
ANGULAR ±1/2°	
DRAFT WHERE APPLICABLE MUST REMAIN WITHIN DIMENSIONS	

DIMENSION STYLE	
MM/IN	
DRAWN BY	DATE
SCHAFFER	11-19-03
CHECKED BY	DATE
SAMIEC	11-21-03
APPROVED BY	DATE
MARGULIS	11-25-03
MATERIAL NO.	DOCUMENT NO.
SEE CHART	

SCALE	DESIGN UNITS	THIRD ANGLE PROJECTION
2:1	INCH	
TITLE		
KK 156 HEADER ASSEMBLY FLAT RIGHT ANGLE SOLID BODY W/O PEGS		
Molex MOLEX INCORPORATED		
DOCUMENT NO.		SHEET NO.
SDA-41772		1 OF *
THIS DRAWING CONTAINS INFORMATION THAT IS PROPRIETARY TO MOLEX INCORPORATED AND SHOULD NOT BE USED WITHOUT WRITTEN PERMISSION		