

Excellent Integrated System Limited

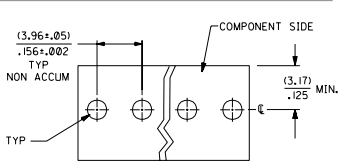
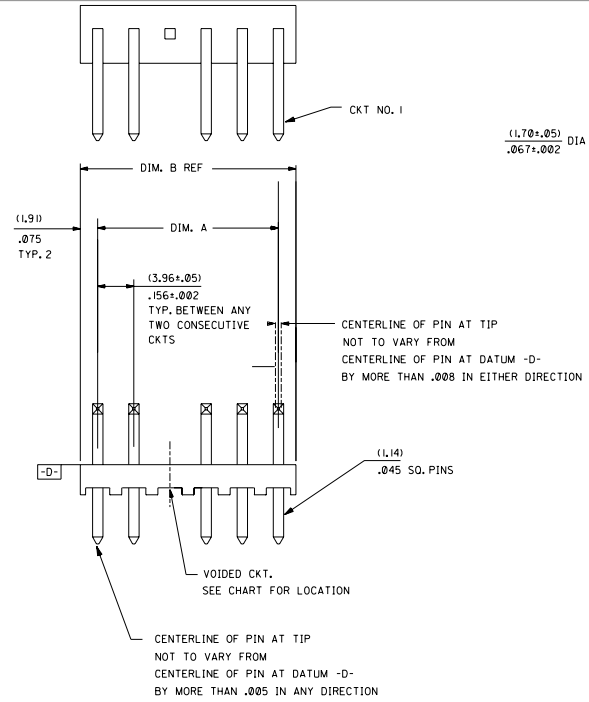
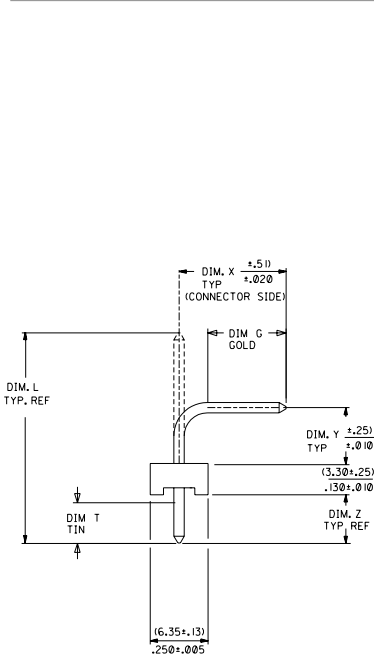
Stocking Distributor

Click to view price, real time Inventory, Delivery & Lifecycle Information:

[Molex Connector Corporation](#)
[0026603057](#)

For any questions, you can email us directly:

sales@integrated-circuit.com



RECOMMENDED PC BOARD HOLE LAYOUT FOR CORRECT ORIENTATION OF PARTS WITH VOIDS ELIMINATE CORRESPONDING PCB HOLE

NOTES:

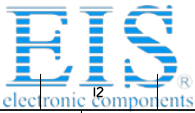
- PRECEDING ENG. NO. IN CHART DESIGNATES STANDARD PRODUCT.
- SOLDERABILITY: WHEN PARTS ARE SOLDERED AT A TEMPERATURE OF 230°C (446°F) FOR 5 SECONDS, EACH SOLDERED SURFACE SHALL BE A MINIMUM OF 95% COVERED WITH A SMOOTH CONTINUOUS ADHERENT COATING, FOR OTHER INFORMATION SEE ES-152.
- PIN PUSH OUT FORCE: PRIOR TO SOLDERING, A 3 POUND MINIMUM FORCE (IN EITHER DIRECTION) SHALL BE REQUIRED TO PUSH THE PIN OUT OF THE HEADER.
- FOR ADDITIONAL INFORMATION AND TESTING PROCEDURES SEE PS-08-50.
- PARTS ARE STACKABLE END TO END ON (3.96)/.156 CENTERS.
- FOR PART WITH PEG SEE DWG. NO. SDA-42472

MATERIAL: HEADER: GLASS FILLED POLYESTER, 94V-0, MOLDED NATURAL (WHITE).
PIN: BRASS

PLATINGS:
(102) ELECTRO TIN .000450/.000200 OVER .000200/.000100 COPPER
(567) SELECT GOLD 15 M.I. MIN SELECT TIN/LEAD 100 M.I. MIN OVER NICKEL OVERALL
(569) SELECT GOLD 30 M.I. MIN SELECT TIN/LEAD 100 M.I. MIN OVER NICKEL OVERALL
FOR ADDITIONAL INFORMATION SE SDES-88.

NO. OF CKT'S.	DIM. A	DIM. B
2	(3.96±.05) .156±.002	(7.77) .306
3	(7.92±.081) .312±.003	(11.73) .462
4	(11.89±.08) .468±.003	(15.70) .618
5	(15.85±.10) .624±.004	(19.66) .774
6	(19.81±.10) .780±.004	(23.62) .930
7	(23.77±.10) .936±.004	(27.58) 1.086
8	(27.74±.13) 1.092±.005	(31.55) 1.242
9	(31.70±.13) 1.248±.005	(35.51) 1.398
10	(35.66±.13) 1.404±.005	(39.47) 1.554
11	(39.62±.15) 1.560±.006	(43.43) 1.710
12	(43.59±.15) 1.716±.006	(47.40) 1.866
13	(47.55±.15) 1.872±.006	(51.36) 2.022
14	(51.51±.18) 2.028±.007	(55.32) 2.178
15	(55.47±.18) 2.184±.007	(59.28) 2.334
16	(59.44±.18) 2.340±.007	(63.25) 2.490
17	(63.40±.20) 2.496±.008	(67.21) 2.646
18	(67.36±.20) 2.652±.008	(71.17) 2.802

REL 0588/0604 UCR2002-0752 03/11/02 SAMEEC	H I	DIMENSIONS SHOWN (METRIC) INCH UNLESS OTHERWISE SPECIFIED TOLERANCES ARE AS SHOWN	REVISE ONLY ON CAD SYSTEM
REV TO WW SPEC UCR2002-0017 7/25/01 SAMEEC	H	1 PLACE ± 2 PLACE ± 3 PLACE ±	FLAT HEADER ASS'Y .156 C BENT SQ PINS, W/O PEG 41772 SERIES DRAWING
REL 0574/0587 UCR2001-0262 9-19-00 SAMEEC	G3	DRIFT WHERE APPLICABLE MUST REMAIN WITHIN DIMENSIONS	MOLEX INCORPORATED SHEET NO. DATE LYSLEAL G033 U.S.A. 1 OF 6 09/09/87
LTR. REVISIONS	LTR. REVISIONS	DRWG: SAMIEC DWG. NO. PATEL APP'D: LENZ SCALE: :	SEE CHART SD A-41772



Distributor of Molex Connector Corporation: Excellent Integrated System Limited

Datasheet of 0026603057 - KK 156 HDR ASSY RTAN TIN 5POS

Contact us: sales@integrated-circuit.com Website: www.integrated-circuit.com

Table with columns: ENG. NO., HEADER NO., PIN NO., PLATING, DIM. L, DIM. X, DIM. G GOLD, DIM. Y, DIM. Z, DIM. T TIN, DIM. W, NO. OF CKTS, VOID CKTS, PACKAGING. Rows include part numbers like A-41772-0206/0222 and dimensions.

ON ASSEMBLIES A-41772-0291 / 0324 THE PIN BEND RADIUS IS TO BE .045 R

Summary table with columns: A-41772-0206/0222, A-41772-0291/0307, A-41772-0308/0324, A-41772-0325/0340, A-41772-0341/0352, A-41772-0353/0367. Sub-headers: EDP NO., ENG. NO., NO. OF CKTS.

Main assembly table with columns: EDP NO., ENG. NO., NO. OF CKTS. Rows list various sub-components and their quantities, such as 26-60-3028, 26-60-3038, etc.

Technical drawing area containing a cross-section of a pin, a grid of revision references (SEE SHEET I, E10, etc.), and a title block with fields for DIMENSIONS, TOLERANCES, and PART INFORMATION.