

## Excellent Integrated System Limited

Stocking Distributor

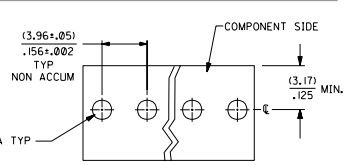
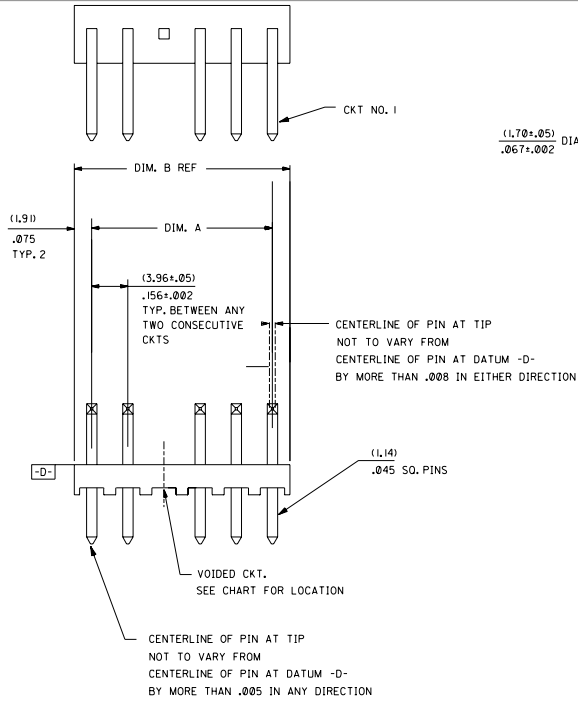
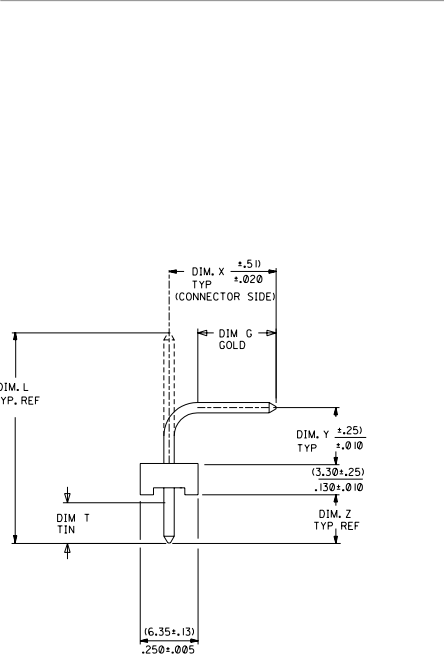
Click to view price, real time Inventory, Delivery & Lifecycle Information:

[Molex Connector Corporation](#)  
[0026603066](#)

For any questions, you can email us directly:

[sales@integrated-circuit.com](mailto:sales@integrated-circuit.com)

13 | 12 | 11 | 10 | 9 | 8 | 7 | 6 | 5 | 4 | 3 | 2 | 1



RECOMMENDED PC BOARD HOLE LAYOUT FOR CORRECT ORIENTATION OF PARTS WITH VOIDS ELIMINATE CORRESPONDING PCB HOLE

NO. OF CKT'S.	DIM. A	DIM. B
2	$(3.96 \pm .05)$ $.156 \pm .002$	$(7.77)$ .306
3	$(7.92 \pm .08)$ $.312 \pm .003$	$(11.73)$ .462
4	$(11.89 \pm .08)$ $.468 \pm .003$	$(15.70)$ .618
5	$(15.85 \pm .10)$ $.624 \pm .004$	$(19.66)$ .774
6	$(19.81 \pm .10)$ $.780 \pm .004$	$(23.62)$ .930
7	$(23.77 \pm .10)$ $.936 \pm .004$	$(27.58)$ 1.086
8	$(27.74 \pm .13)$ $1.092 \pm .005$	$(31.55)$ 1.242
9	$(31.70 \pm .13)$ $1.248 \pm .005$	$(35.51)$ 1.398
10	$(35.66 \pm .13)$ $1.404 \pm .005$	$(39.47)$ 1.554
11	$(39.62 \pm .15)$ $1.560 \pm .006$	$(43.43)$ 1.710
12	$(43.59 \pm .15)$ $1.716 \pm .006$	$(47.40)$ 1.866
13	$(47.55 \pm .15)$ $1.872 \pm .006$	$(51.36)$ 2.022
14	$(51.51 \pm .18)$ $2.028 \pm .007$	$(55.32)$ 2.178
15	$(55.47 \pm .18)$ $2.184 \pm .007$	$(59.28)$ 2.334
16	$(59.44 \pm .18)$ $2.340 \pm .007$	$(63.25)$ 2.490
17	$(63.40 \pm .20)$ $2.496 \pm .008$	$(67.21)$ 2.646
18	$(67.36 \pm .20)$ $2.652 \pm .008$	$(71.17)$ 2.802

NOTES:

- 1. PRECEDING ENG. NO. IN CHART DESIGNATES STANDARD PRODUCT.
- 2. SOLDERABILITY: WHEN PARTS ARE SOLDERED AT A TEMPERATURE OF 230°C (446°F) FOR 5 SECONDS, EACH SOLDERED SURFACE SHALL BE A MINIMUM OF 95% COVERED WITH A SMOOTH CONTINUOUS ADHERENT COATING, FOR OTHER INFORMATION SEE ES-152.
- 3. PIN PUSH OUT FORCE: PRIOR TO SOLDERING, A 3 POUND MINIMUM FORCE (IN EITHER DIRECTION) SHALL BE REQUIRED TO PUSH THE PIN OUT OF THE HEADER.
- 4. FOR ADDITIONAL INFORMATION AND TESTING PROCEDURES SEE PS-08-50.
- 5. PARTS ARE STACKABLE END TO END ON  $(3.96)/.156$  CENTERS.
- 6. FOR PART WITH PEG SEE DWG. NO. SDA-42472

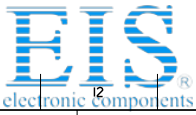
MATERIAL: HEADER: GLASS FILLED POLYESTER, 94V-0, MOLDED NATURAL (WHITE). PIN: BRASS

PLATINGS:

- (102) ELECTRO TIN  $.000450/.000200$  OVER  $.000200/.000100$  COPPER
  - (567) SELECT GOLD 15 M.I. MIN SELECT TIN/LEAD 100 M.I. MIN OVER NICKEL OVERALL
  - (569) SELECT GOLD 30 M.I. MIN SELECT TIN/LEAD 100 M.I. MIN OVER NICKEL OVERALL
- FOR ADDITIONAL INFORMATION SE SDES-88.

REL 0588/0604 UCR2002-0752 03/11/02 SAMEEC	H I	DIMENSIONS SHOWN (METRIC) INCH UNLESS OTHERWISE SPECIFIED TOLERANCES UNLESS NOTED		REVISIONS ONLY ON CAD SYSTEM	
REV TO WW SPEC UCR2002-0017 7/25/01 SAMEEC	H	1 PLACE ±	INCH	TITLE FLAT HEADER ASS'Y .156 C BENT SQ PINS, W/O PEG 41772 SERIES DRAWING	
REL 0574/0587 UCR2001-0262 9-19-00 SAMEEC	G3	2 PLACE ±	METRIC	MOLEX INCORPORATED 1000 N. GARDEN CITY BLVD. GARDEN CITY, MO 64303 U.S.A.	
LTR. REVISIONS	LTR. REVISIONS	DRAWING APPROVALS		PART NO. SEE CHART SD A-41772	
		APP'D: LENZ	CHK'D: PATEL	SHEET NO. DATE 1 OF 6 09/09/87	
			SCALE :	THIS DRAWING CONTAINS INFORMATION THAT IS PROPRIETARY TO MOLEX, INC. AND SHOULD NOT BE USED WITHOUT WRITTEN PERMISSION.	

13 | 12 | 11 | 10 | 9 | 8 | 7 | 6 | 5 | 4 | 3 | 2 | 1



Distributor of Molex Connector Corporation: Excellent Integrated System Limited

Datasheet of 0026603066 - KK 156 HDR ASSY RTAN TIN 6POS

Contact us: sales@integrated-circuit.com Website: www.integrated-circuit.com

Table with columns: ENG. NO., HEADER NO., PIN NO., PLATING, DIM. L, DIM. X, DIM. G GOLD, DIM. Y, DIM. Z, DIM. T TIN, DIM. W, NO-OF CKTS, VOID CKTS, PACKAGING. Rows include part numbers like A-41772-0019/0035 and dimensions.

Table with columns: A-41772-0019/0035, A-41772-0053/0069, A-41772-0070/0086, A-41772-0155/0171, A-41772-0172/0188, A-41772-0189/0205. Rows list EDP NO., ENG. NO., and NO OF CKTS.

Table with columns: A-41772-0019/0035, A-41772-0053/0069, A-41772-0070/0086, A-41772-0155/0171, A-41772-0172/0188, A-41772-0189/0205. Rows list EDP NO., ENG. NO., and NO OF CKTS.

Technical drawing area containing: DIMENSIONS SHOWN (METRIC) INCH, TOLERANCES UNLESS OTHERWISE SPECIFIED, DRAWING SHEET NO. 3, DATE 06/26/88, SEE CHART, SDA-41772, and revision table.