

Excellent Integrated System Limited

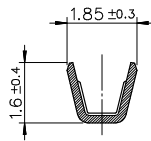
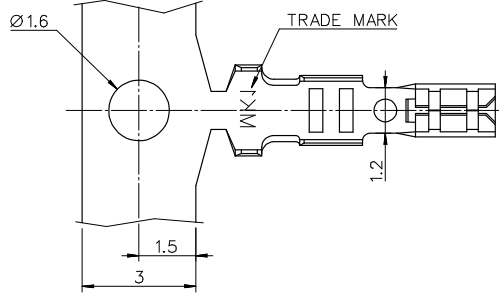
Stocking Distributor

Click to view price, real time Inventory, Delivery & Lifecycle Information:

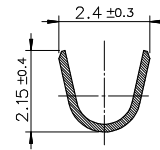
[Molex Connector Corporation](#)
[0039000160](#)

For any questions, you can email us directly:

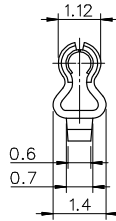
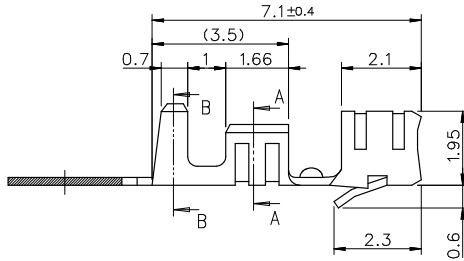
sales@integrated-circuit.com



SECTION A-A



SECTION B-B



NOTE

1. APPLIED HOUSING : 5264-N
2. MATERIAL : PHOSPHOR BRONZE(PRE TIN)
3. APPLIED WIRE : AWG #22~#28
INS. RANGE: Ø1.15~1.9

ENG. NO.	Material No.	FORM
5263PBT9	39-00-0160	CHAIN

REVISED EC NO: KOR2008-0778 DRW: HWJEONG CHKD: 2008/04/14 APPR: TUNSIKKIM 2008/04/15	QUALITY SYMBOLS ▽=0 ▽=0	GENERAL TOLERANCES (UNLESS SPECIFIED)		DIMENSION STYLE MM ONLY	SCALE 10:1	DESIGN UNITS METRIC	THIRD ANGLE PROJECTION	
				DRAWN BY 1988/09/13 SJMOON	DATE	TITLE BOARD IN CONNECTOR CRIMP TERMINAL		
				CHECKED BY 1988/09/13 YSOOKIM	DATE			
				APPROVED BY 1988/09/13 YSOOKIM	DATE	MATERIAL NO. SD-5263PBT9		
D1	DESCRIPTION	DRAFT WHERE APPLICABLE MUST REMAIN WITHIN DIMENSIONS		SIZE A3	SHEET NO. 1 OF 1			