

Excellent Integrated System Limited

Stocking Distributor

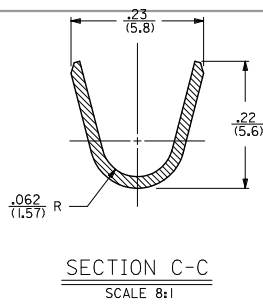
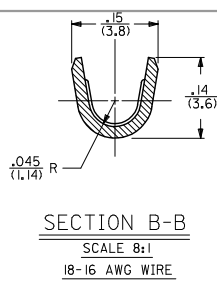
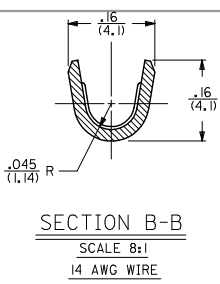
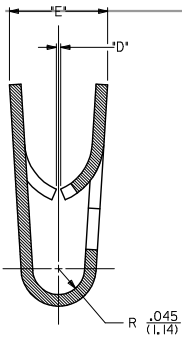
Click to view price, real time Inventory, Delivery & Lifecycle Information:

[Molex Connector Corporation](#)

[0040062014](#)

For any questions, you can email us directly:

sales@integrated-circuit.com

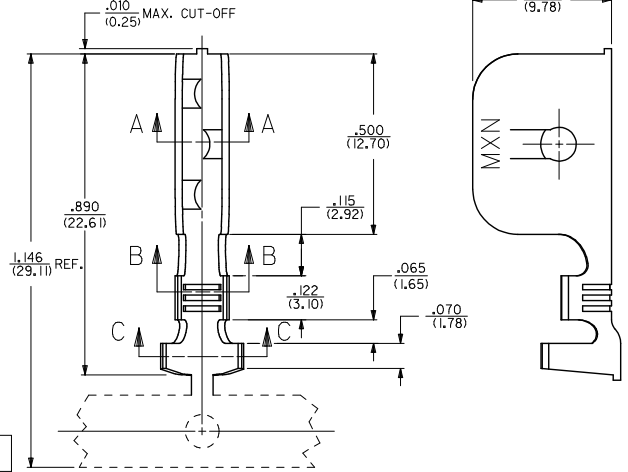
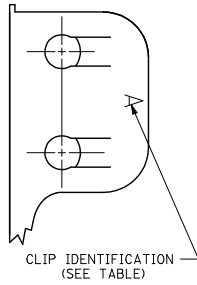
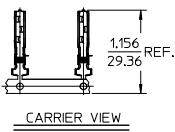


NOTES:

1. THIS GROUND CLIP CRIMPS TO #14- #18 AWG WIRE WITH .031(.79) THICK INSULATION, SEE CHART, AND IS INTENDED FOR USE ONLY AS A SECONDARY GROUND.

MATERIAL:

STEEL, STAINLESS, TYPE 301, .020(.51) THICK.



040-06-2015	42172-BB1	.025/(0.64)	.17/(4.3)	.035/(0.89)-.050/(1.27)	14 AWG	(2) #16 AWG
040-06-2014	42172-AA1	.008/(0.20)	.15/(3.8)	.015/(0.38)-.035/(0.89)	14 AWG	
050-29-1597	42172-H1	.035/(0.89)	.17/(4.3)	.045/(1.14)-.060/(1.52)	18-16 AWG	(2) #18 AWG OR (1) #18 & (1) #16
040-06-2017	42172-F1	.015/(0.38)	.15/(3.8)	.020/(0.51)-.030/(0.76)	18-16 AWG	
040-06-2013	42172-C1	.050/(1.27)	.17/(4.3)	.060/(1.52)-.075/(1.91)	18-16 AWG	
040-06-2005	42172-B1	.025/(0.64)	.17/(4.3)	.035/(0.89)-.050/(1.27)	18-16 AWG	
040-06-2003	42172-A1	.008/(0.20)	.15/(3.8)	.015/(0.38)-.035/(0.89)	18-16 AWG	
040-06-2024	42172-G1	.004/(0.10)	.15/(3.8)	.015/(0.38)-.035/(0.89)	18-16 AWG	
PART NO.	ENG. NO.	DIM. "D"	DIM. "E"	PANEL THICKNESS RANGE	WIRE GAGE	DOUBLE WIRE COMBINATION

MOVE DIM E REC NO: UCP2015-5495 DRAWN: JOMIT 2015/06/23 CHKD: KATIPER 2015/06/23 APPROV: SMITH 2015/06/30 R3	QUALITY SYMBOLS 	GENERAL TOLERANCES (UNLESS SPECIFIED) mm INCH 4 PLACES ± --- ± --- 3 PLACES ± --- ± .010 2 PLACES ± 0.25 ± .014 1 PLACE ± 0.35 ± .014 0 PLACE ± ±	DIMENSION STYLE IN/MM DRAWN BY DATE MAB 07-24-92 CHECKED BY DATE KBP 07-24-92 APPROVED BY DATE RAS 07-24-92	SCALE 5:1 DESIGN UNITS INCH THIRD ANGLE PROJECTION	TITLE GROUND CLIP		MATERIAL NO. SEE CHART	DOCUMENT NO. SD-42172-**	SHEET NO. 1 OF 1	
		ANGULAR ±1/2° DRAFT WHERE APPLICABLE MUST REMAIN WITHIN DIMENSIONS		THIS DRAWING CONTAINS INFORMATION THAT IS PROPRIETARY TO MOLEX INCORPORATED AND SHOULD NOT BE USED WITHOUT WRITTEN PERMISSION						
		THIS DRAWING CONTAINS INFORMATION THAT IS PROPRIETARY TO MOLEX INCORPORATED AND SHOULD NOT BE USED WITHOUT WRITTEN PERMISSION								