

Excellent Integrated System Limited

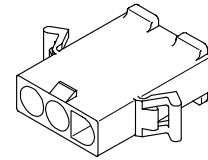
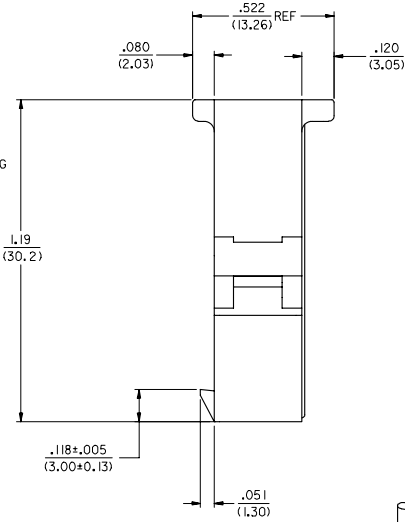
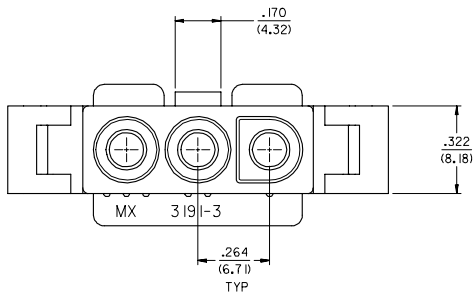
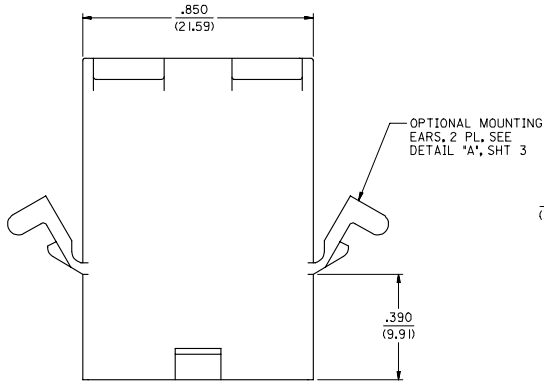
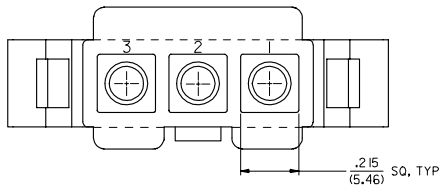
Stocking Distributor

Click to view price, real time Inventory, Delivery & Lifecycle Information:

[Molex Connector Corporation](#)
[0050361722](#)

For any questions, you can email us directly:

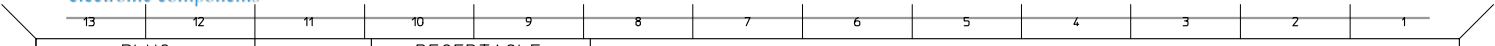
sales@integrated-circuit.com



PLUG

3	A
2	A
1	A
SHT. REV.	

INITIAL RELEASE EIC NO: UCF2006-0736 DRAWN BY: SCHMIDT 2007/07/25 CHECKED BY: SCHMIDT 2007/07/27 APPROVED BY: SMITH 2007/07/27 REV: A	QUALITY SYMBOLS ▽=0 ▽=0	GENERAL TOLERANCES (UNLESS SPECIFIED) <table border="1"> <tr> <td></td> <td>mm</td> <td>INCH</td> </tr> <tr> <td>4 PLACES</td> <td>±.005</td> <td>±.0005</td> </tr> <tr> <td>3 PLACES</td> <td>±.005</td> <td>±.0010</td> </tr> <tr> <td>2 PLACES</td> <td>±.025</td> <td>±.0015</td> </tr> <tr> <td>1 PLACE</td> <td>±.038</td> <td>±.0015</td> </tr> </table> ANGULAR ±1/2°		mm	INCH	4 PLACES	±.005	±.0005	3 PLACES	±.005	±.0010	2 PLACES	±.025	±.0015	1 PLACE	±.038	±.0015	DIMENSION STYLE IN/MM	SCALE 4:1	DESIGN UNITS INCH	THIRD ANGLE PROJECTION
		mm	INCH																		
	4 PLACES	±.005	±.0005																		
	3 PLACES	±.005	±.0010																		
2 PLACES	±.025	±.0015																			
1 PLACE	±.038	±.0015																			
DRAWN BY: AELHAG 2007/06/27 CHECKED BY: SCHMIDT 2007/07/19 APPROVED BY: SMITHROEMER 2007/07/20	TITLE .093/(2.36) HOUSING PLUG AND RECEPTACLE, 3 CKT .264/(6.71) CTRS.	MATERIAL NO. SEE CHART	DOCUMENT NO. SD-3191-3**1	MOLEX INCORPORATED	SHEET NO. 1 OF 3																
DRAFT WHERE APPLICABLE MUST REMAIN WITHIN DIMENSIONS																					
SIZE C THIS DRAWING CONTAINS INFORMATION THAT IS PROPRIETARY TO MOLEX INCORPORATED AND SHOULD NOT BE USED WITHOUT WRITTEN PERMISSION																					



PLUG		RECEPTACLE	
PART NO.	ENG. NO.	PART NO.	ENG. NO.
50-36-1722	3191-3P1-1	50-36-1689	3191-3R1-1

LEGEND

3191-3*****

CIRCUIT SIZE

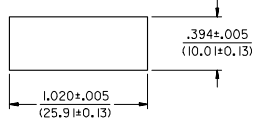
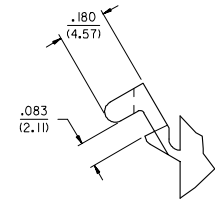
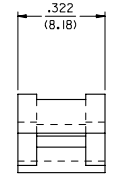
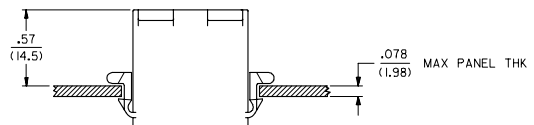
P = PLUG
R = RECEPTACLE

EARS: BLANK = WITH PREBENT EARS (PLUG ONLY)
I = WITHOUT EARS

COLOR: NOT APPLICABLE

MATERIAL:
1: CODE B.

- NOTES:**
- MATERIAL: B = NYLON (PA 6), UL94 V-0, IEC 60335-1, 4TH EDITION
GLOW WIRE CAPABLE; COLOR: BLACK
 - FINISH: NONE
 - PRODUCT SPECIFICATION: PS-02-08
 - PACKAGING SPECIFICATION: PK-3191-001
 - PARTS CONFORM TO CLASS B REQUIREMENTS OF COSMETIC SPECIFICATION PS-45499-002 EXCEPT SINK AND DISCOLORATION MEETS CLASS 'C' REQUIREMENTS.



RECOMMENDED HOLE CUTOUT

DETAIL "A"
PREBENT MOUNTING EAR
(SCALE 4:1)

INITIAL RELEASE IEC NO: UCP2006-0736 DRAWN BY: DRWNL: SCHMIDT 2007/07/25 CHECKED BY: CHKDL: SCHMIDT 2007/07/27 APPROVED BY: APPRG: SMITH 2007/07/27	QUALITY SYMBOLS ▽=0 ▽=0	GENERAL TOLERANCES (UNLESS SPECIFIED)		DIMENSION STYLE IN/MM	SCALE ---	DESIGN UNITS INCH	THIRD ANGLE PROJECTION		
		4 PLACES ±.--- ±.---	3 PLACES ±.--- ±.010	2 PLACES ±0.25 ±.015	1 PLACE ±0.38 ±.---	ANGULAR ±1/2°	DRAWN BY: AELHAG DATE: 2007/06/27 CHECKED BY: SCHMIDT DATE: 2007/07/19 APPROVED BY: FSMITHROEMER DATE: 2007/07/20	TITLE .093/(2.36) HOUSINGS, PLUG AND RECEPTACLE, 3 CKT .264/(6.71) CTRS.	MOLEX INCORPORATED
		DRAFT WHERE APPLICABLE MUST REMAIN WITHIN DIMENSIONS		MATERIAL NO. SEE CHART	DOCUMENT NO. SD-3191-3**1	SHEET NO. 3 OF 3			
		THIS DRAWING CONTAINS INFORMATION THAT IS PROPRIETARY TO MOLEX INCORPORATED AND SHOULD NOT BE USED WITHOUT WRITTEN PERMISSION							

