

Excellent Integrated System Limited

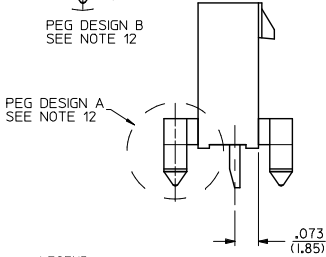
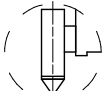
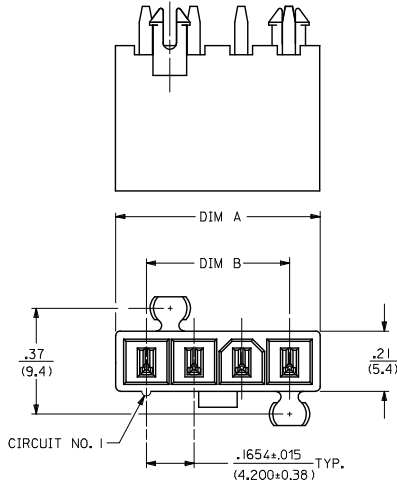
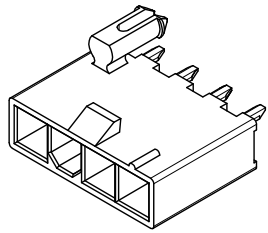
Stocking Distributor

Click to view price, real time Inventory, Delivery & Lifecycle Information:

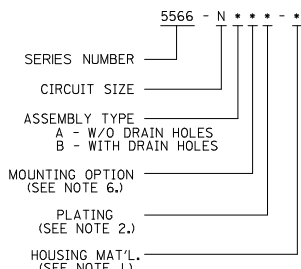
[Molex Connector Corporation](#)
[0050361819](#)

For any questions, you can email us directly:
sales@integrated-circuit.com

CKT SIZE	DIM A	DIM B	DIM D
3	.54 (13.8)	.331 (8.40)	.49 (12.5)
4	.71 (18.0)	.496 (12.60)	.50 (12.8)
5	.87 (22.2)	.661 (16.80)	.50 (12.8)

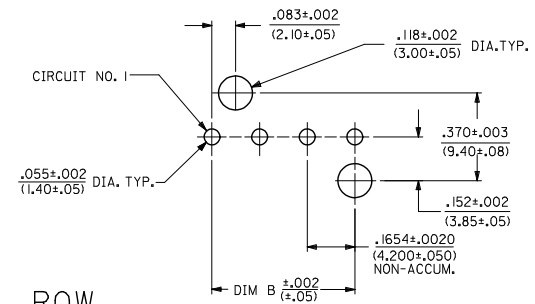


LEGEND:



SEE SHT. 2 FOR DUAL ROW

* THE CHART FOR SINGLE ROW PRODUCT IS ON PAGE 3

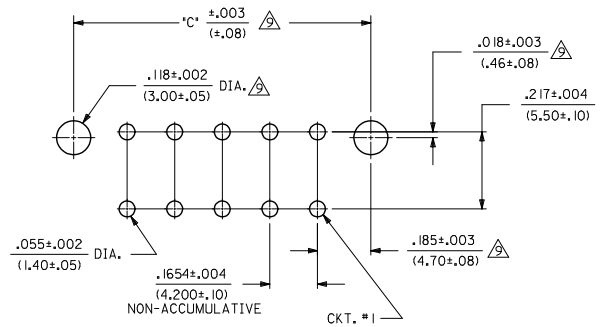
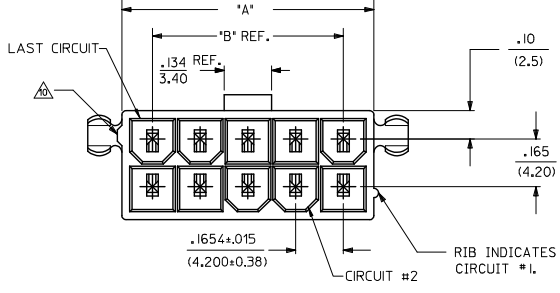
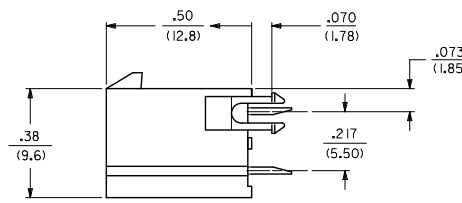
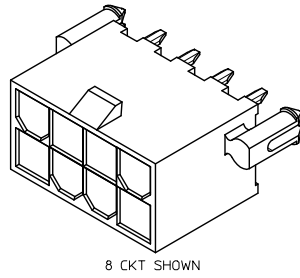


RECOMMENDED HOLE LAYOUT FOR
.070/(1.78) MAX. THICK P. C. BOARD
VIEWED FROM COMPONENT SIDE

- NOTES:**
- MATERIALS:**
HOUSING:
225-NYLON, UL94 V-0, COLOR: BLACK, IEC 60335-1, 4th EDITION GLOW WIRE CAPABLE
TERMINALS:
BRASS
TERMINAL PLATING:
S-.000100/(0.00254) MIN. BRIGHT TIN OVER
.000050/(0.00127) MIN. NICKEL
GS-.000030/(0.00076) MIN. SELECT GOLD AND
.000100/(0.00254) MIN. SELECT MATTE TIN OVER
.000050/(0.00127) MIN. NICKEL OVERALL
MS-.000100/(0.00254) MIN. MATTE TIN OVER
.000050/(0.00127) MIN. NICKEL
 - PRODUCT SPECIFICATION: PS-5556-001
 - PACKAGING: SEE CHARTS
 - PART MATES WITH MINI-FIT JR. RECEPTACLE NO. 5557.
 - MOUNTING OPTIONS:
BLANK-DUAL ROW WITHOUT PEGS
2-DUAL ROW WITH MOUNTING PEGS
3-SINGLE ROW WITH MOUNTING PEGS
 - PART IS NOT DESIGNED FOR CURRENT SHARING.
 - PARTS ARE NOT DESIGNED TO BE MATED OR UN-MATED WHILE CIRCUITS ARE LIVE.
 - LOCATION OF .118±.002/(3.00±.05) DIAMETER HOLES ON P.C. BOARD IS FOR OPTIONAL PEGS.
 - ANTI-SHINGLING RIB MAY OR MAY NOT APPEAR ON HOUSING.
 - PART CONFORMS TO CLASS 'B' REQUIREMENTS OF COSMETIC SPECIFICATION PS-45499-002 WITH THE EXCEPTION OF DISCOLORATION, FLASH AND SINK ON THE HOUSING MEET CLASS 'C' REQUIREMENTS.
 4. CIRCUIT PARTS WILL HAVE PEG DESIGN A. ALL OTHER CIRCUIT SIZES WILL HAVE PEG DESIGN B.

REMOVE DRAIN HOLES IEC NO. UCP2015-4208 DRAWN BY: 2014/04/22 CHKD: BELL APPROVED BY: 2014/05/16	QUALITY SYMBOLS	GENERAL TOLERANCES (UNLESS SPECIFIED)		DIMENSION STYLE		SCALE	DESIGN UNITS	THIRD ANGLE PROJECTION
		mm	INCH	IN/MM	DATE	4:1	METRIC	PROJECTION
A10	∇=0	4 PLACES	±.005	±.005	DRAWN BY: SCHMIDT	2008/01/22	MINI-FIT VERT HDR ASSY W & W/O PEGS SINGLE AND DUAL ROW molex SD-5566-225	
	∇=0	3 PLACES	±.015	±.015	CHECKED BY: ADERR	2008/01/24		
	∇=0	2 PLACES	±0.38	±.020	APPROVED BY: SMITH	2011/11/11		
	∇=0	1 PLACE	±0.50	±.020	MATERIAL NO.	DOCUMENT NO.		
	∇=0	0 PLACE	±.020	±.020	SEE CHARTS	SD-5566-225		
DRAFT WHERE APPLICABLE MUST REMAIN WITHIN DIMENSIONS		ANGULAR ±1/2°		SIZE C		THIS DRAWING CONTAINS INFORMATION THAT IS PROPRIETARY TO MOLEX INCORPORATED AND SHOULD NOT BE USED WITHOUT WRITTEN PERMISSION		

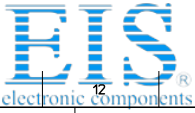
CIRCUIT SIZE	DIM. 'A'	DIM. 'B'	DIM. 'C'
2	.21 (5.4)	—	.370 (9.40)
4	.38 (9.6)	.17 (4.2)	.535 (13.60)
6	.54 (13.8)	.33 (8.4)	.701 (17.80)
8	.71 (18.0)	.50 (12.6)	.866 (22.00)
10	.87 (22.2)	.66 (16.8)	1.031 (26.20)
12	1.04 (26.4)	.83 (21.0)	1.197 (30.40)
14	1.20 (30.6)	.99 (25.2)	1.362 (34.60)
16	1.37 (34.8)	1.16 (29.4)	1.528 (38.80)
18	1.54 (39.0)	1.32 (33.6)	1.693 (43.00)
20	1.70 (43.2)	1.49 (37.8)	1.858 (47.20)
22	1.87 (47.4)	1.65 (42.0)	2.024 (51.40)
24	2.03 (51.6)	1.82 (46.2)	2.189 (55.60)



RECOMMENDED HOLE LAYOUT FOR .070/(1.78) MAX. THICK P. C. BOARD
VIEWED FROM COMPONENT SIDE

SEE SHT. 1 FOR SINGLE ROW
* THE CHART FOR DUAL ROW PRODUCT IS ON PAGE 4

SEE SHEET 1 EC NO: UCP2013-4208 2014/04/22 DRAWING: NGUYEN CHKD: BELL 2014/04/22 APPR: SMITH 2014/05/16	QUALITY SYMBOLS □=0 □=0 □=0	GENERAL TOLERANCES (UNLESS SPECIFIED)		DIMENSION STYLE IN/MM		SCALE 4:1	DESIGN UNITS METRIC	THIRD ANGLE PROJECTION	
		4 PLACES ± --- ± ---	3 PLACES ± --- ± .015	DRAWN BY LSCHMIDT	DATE 2008/01/22	TITLE MINI-FIT VERT HDR ASSY W & W/O PEGS SINGLE AND DUAL ROW			
		2 PLACES ± 0.38 ± .020	1 PLACE ± 0.50 ± ---	CHECKED BY ADERR	DATE 2008/01/24	APPROVED BY SMITH			
		0 PLACE ± --- ± ---	ANGULAR ± 1/2°	MATERIAL NO. SEE CHART	DOCUMENT NO. SD-5566-225	SHEET NO. 2 OF 4			
DRAFT WHERE APPLICABLE MUST REMAIN WITHIN DIMENSIONS		THIS DRAWING CONTAINS INFORMATION THAT IS PROPRIETARY TO MOLEX INCORPORATED AND SHOULD NOT BE USED WITHOUT WRITTEN PERMISSION							



Distributor of Molex Connector Corporation: Excellent Integrated System Limited

Datasheet of 0050361819 - MINIFITJRHDR VT SR W/PGS SN 5POS

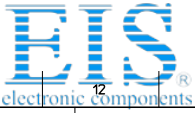
Contact us: sales@integrated-circuit.com Website: www.integrated-circuit.com

PLATING: 100 M.I. TIN - PLATING CODE 'S'			PLATING:			PLATING:			PLATING:		
MTG. OPTION: WITH PEGS			MTG. OPTION:			MTG. OPTION:			MTG. OPTION:		
PACKAGING: TRAY PACK PER PK-5566-002			PACKAGING:			PACKAGING:			PACKAGING:		
PART NO.	ENG. NO.	CKTS	PART NO.	ENG. NO.	CKTS	PART NO.	ENG. NO.	CKTS	PART NO.	ENG. NO.	CKTS
50-36-1809	5566-03A3S-225	3			3			3			3
50-36-2367	5566-04A3S-225	4			4			4			4
50-36-1819	5566-05A3S-225	5			5			5			5

<p>SEE SHEET 1</p> <p>EC NO: UCP2013-4208 2014/04/22</p> <p>DRAWING: 2014/04/22</p> <p>CHKD: BELL 2014/04/22</p> <p>APPR: SMITH 2014/05/16</p>																																
QUALITY SYMBOLS			GENERAL TOLERANCES (UNLESS SPECIFIED)			DIMENSION STYLE		SCALE	DESIGN UNITS	THIRD ANGLE PROJECTION																						
<p>▽=0</p> <p>▽=0</p> <p>▽=0</p>			<table border="1"> <tr> <th></th> <th>mm</th> <th>INCH</th> </tr> <tr> <td>4 PLACES</td> <td>±---</td> <td>±---</td> </tr> <tr> <td>3 PLACES</td> <td>±---</td> <td>±.015</td> </tr> <tr> <td>2 PLACES</td> <td>±0.38</td> <td>±.020</td> </tr> <tr> <td>1 PLACE</td> <td>±0.50</td> <td>±---</td> </tr> <tr> <td>0 PLACE</td> <td>±---</td> <td>±---</td> </tr> </table>				mm	INCH	4 PLACES	±---	±---	3 PLACES	±---	±.015	2 PLACES	±0.38	±.020	1 PLACE	±0.50	±---	0 PLACE	±---	±---	IN/MM		DATE	TITLE	1:1	METRIC			
	mm	INCH																														
4 PLACES	±---	±---																														
3 PLACES	±---	±.015																														
2 PLACES	±0.38	±.020																														
1 PLACE	±0.50	±---																														
0 PLACE	±---	±---																														
DESCRIPTION			DRAWN BY		DATE	MINI-FIT VERT HDR ASSY																										
REV			CHECKED BY		DATE	W & W/O PEGS																										
A10			ADERR		2008/01/24	SINGLE AND DUAL ROW																										
			APPROVED BY		DATE	molex																										
			F SMITH		2011/11/11	MATERIAL NO.		DOCUMENT NO.	SHEET NO.																							
			ANGULAR ±1/2°			SEE CHART		SD-5566-225	3 OF 4																							
			DRAFT WHERE APPLICABLE MUST REMAIN WITHIN DIMENSIONS			THIS DRAWING CONTAINS INFORMATION THAT IS PROPRIETARY TO MOLEX INCORPORATED AND SHOULD NOT BE USED WITHOUT WRITTEN PERMISSION																										

12	11	10	9	8	7	6	5	4	3	2	1
----	----	----	---	---	---	---	---	---	---	---	---

Id_frame_C_P_AM_T
Rev. G 2012/01/11



Distributor of Molex Connector Corporation: Excellent Integrated System Limited

Datasheet of 0050361819 - MINIFITJRHDR VT SR W/PGS SN 5POS

Contact us: sales@integrated-circuit.com Website: www.integrated-circuit.com

PLATING:	100 M.I. TIN - PLATING CODE 'S'	PLATING:	100 M.I. TIN - PLATING CODE 'S'	PLATING:	30 M.I. GOLD - PLATING CODE 'GS'	PLATING:	30 M.I. GOLD - PLATING CODE 'GS'	
MTG. OPTION:	WITHOUT PEGS	MTG. OPTION:	WITH PEGS	MTG. OPTION:	WITHOUT PEGS	MTG. OPTION:	WITH PEGS	
PACKAGING:	TRAY PACK PER PK-5566-001	PACKAGING:	TRAY PACK PER PK-5566-001	PACKAGING:	TRAY PACK PER PK-5566-001	PACKAGING:	TRAY PACK PER PK-5566-001	
COLOR:	BLACK	COLOR:	BLACK	COLOR:	BLACK	COLOR:	BLACK	
PART NO.	ENG. NO.	CKTS	PART NO.	ENG. NO.	CKTS	PART NO.	ENG. NO.	CKTS
50-36-1882	5566-02AS-225	2	50-36-1699	5566-02A2S-225	2	469990037	5566-02AGS-225	2
50-36-1884	5566-04AS-225	4	50-36-1702	5566-04A2S-225	4	NOT TOOLED	5566-04AGS-225	4
50-36-1697	5566-06AS-225	6	50-36-1704	5566-06A2S-225	6	469990039	5566-06AGS-225	6
50-36-1683	5566-08AS-225	8	50-36-1706	5566-08A2S-225	8	NOT TOOLED	5566-08AGS-225	8
50-36-1741	5566-10AS-225	10	50-36-1708	5566-10A2S-225	10	NOT TOOLED	5566-10AGS-225	10
50-36-1886	5566-12AS-225	12	50-36-1711	5566-12A2S-225	12	NOT TOOLED	5566-12AGS-225	12
50-36-1741	5566-14AS-225	14	NOT TOOLED	5566-14A2S-225	14	NOT TOOLED	5566-14AGS-225	14
50-36-1891	5566-16AS-225	16	NOT TOOLED	5566-16A2S-225	16	NOT TOOLED	5566-16AGS-225	16
50-36-1888	5566-18AS-225	18	NOT TOOLED	5566-18A2S-225	18	NOT TOOLED	5566-18AGS-225	18
NOT TOOLED	5566-20AS-225	20	NOT TOOLED	5566-20A2S-225	20	NOT TOOLED	5566-20AGS-225	20
NOT TOOLED	5566-22AS-225	22	NOT TOOLED	5566-22A2S-225	22	NOT TOOLED	5566-22AGS-225	22
NOT TOOLED	5566-24AS-225	24	NOT TOOLED	5566-24A2S-225	24	NOT TOOLED	5566-24AGS-225	24

<p>ib_frame_C.P_AM_T Rev. G 2012/01/11</p>								12	11	10	9	8	7	6	5	4	3	2	1
--	--	--	--	--	--	--	--	----	----	----	---	---	---	---	---	---	---	---	---

<p>SEE SHEET 1 EC NO: UCP2013-4208 2014/04/22 DRAWING: DVN:NGUYEN CHKD: BELL 2014/04/22 APPR: SMITH 2014/05/16</p>	<p>QUALITY SYMBOLS</p> <p>▽=0</p> <p>▽=0</p> <p>▽=0</p>	<p>GENERAL TOLERANCES (UNLESS SPECIFIED)</p>		<p>DIMENSION STYLE</p> <p>IN/MM</p>		<p>SCALE</p> <p>1:1</p>	<p>DESIGN UNITS</p> <p>METRIC</p>	<p>THIRD ANGLE PROJECTION</p>	
		<p>4 PLACES ± --- ± ---</p>	<p>3 PLACES ± --- ± .015</p>	<p>DRAWN BY</p> <p>LSCHMIDT</p>	<p>DATE</p> <p>2008/01/22</p>	<p>TITLE</p> <p>MINI-FIT VERT HDR ASSY W & W/O PEGS SINGLE AND DUAL ROW</p>			
		<p>2 PLACES ± 0.38 ± .020</p>	<p>1 PLACE ± 0.50 ± ---</p>	<p>CHECKED BY</p> <p>ADERR</p>	<p>DATE</p> <p>2008/01/24</p>	<p>MOLEX</p>			
		<p>0 PLACE ± --- ± ---</p>	<p>ANGULAR ±1/2°</p>	<p>APPROVED BY</p> <p>SMITH</p>	<p>DATE</p> <p>2011/11/11</p>	<p>MATERIAL NO.</p> <p>SEE CHART</p>	<p>DOCUMENT NO.</p> <p>SD-5566-225</p>	<p>SHEET NO.</p> <p>4 OF 4</p>	

DRAFT WHERE APPLICABLE MUST REMAIN WITHIN DIMENSIONS

SIZE C THIS DRAWING CONTAINS INFORMATION THAT IS PROPRIETARY TO MOLEX INCORPORATED AND SHOULD NOT BE USED WITHOUT WRITTEN PERMISSION