

Excellent Integrated System Limited

Stocking Distributor

Click to view price, real time Inventory, Delivery & Lifecycle Information:

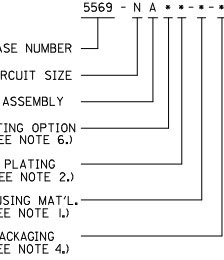
[Molex Connector Corporation](#)
[0050361836](#)

For any questions, you can email us directly:

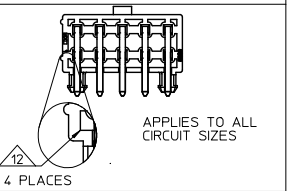
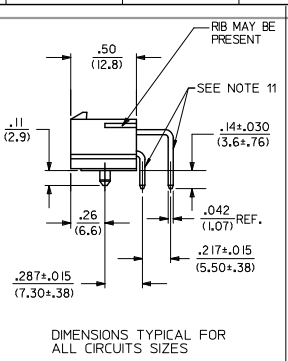
sales@integrated-circuit.com

13 12 11 10 9 8 7 6 5 4 3 2 1

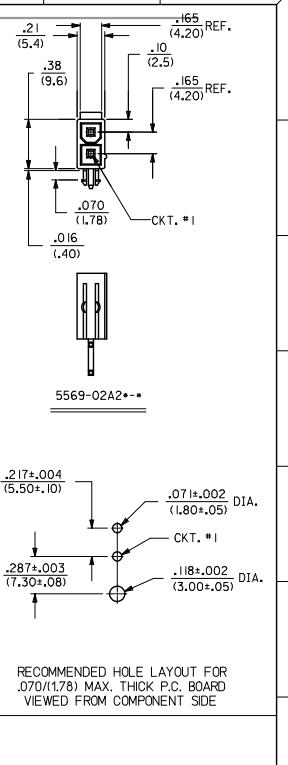
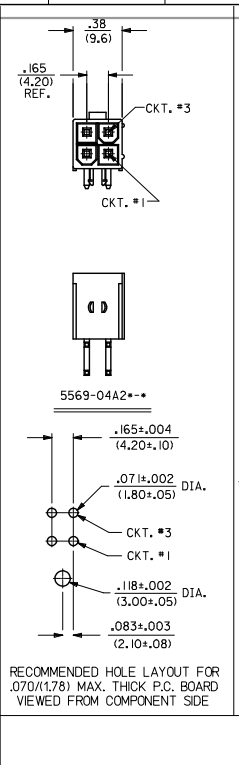
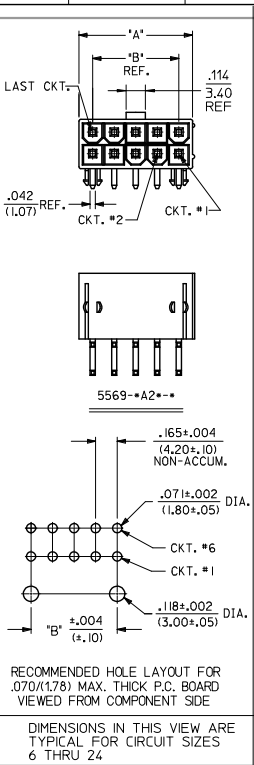
LEGEND:



| CIRCUIT SIZE | DIM. 'A' | DIM. 'B' |
|--------------|----------------|----------------|
| 6 | .54 (13.8) | .33 (8.4) |
| 8 | .71 (18.0) | .50 (12.6) |
| 10 | .87 (22.2) | .66 (16.8) |
| 12 | 1.04 (26.4) | .83 (21.0) |
| 14 | 1.20 (30.6) | .99 (25.2) |
| 16 | 1.37 (34.8) | 1.16 (29.4) |
| 18 | 1.54 (39.0) | 1.32 (33.6) |
| 20 | 1.70 (43.2) | 1.49 (37.8) |
| 22 | 1.87 (47.4) | 1.65 (42.0) |
| 24 | 2.03 (51.6) | 1.82 (46.2) |



- NOTES:**
- MATERIAL:**
HOUSING:
"BLANK" = NYLON (PA66), LOW HALOGEN, UNFILLED, UL94V-2, COLOR: NATURAL
"BL" = NYLON (PA66), LOW HALOGEN, UNFILLED, UL94V-2, COLOR: BLACK
"210" = NYLON (PA66), LOW HALOGEN, UNFILLED, UL94V-0, COLOR: NATURAL
"400" = NYLON (PA66), LOW HALOGEN, UNFILLED, UL94V-0, COLOR: BLACK
TERMINAL:
BRASS ALLOY
2) **FINISH (PLATING):**
G, GS = .000030/(0.00076) MIN. SELECT GOLD OVER .000100/(0.00254) MIN. SELECT MATTE TIN OVER .000050/(0.00127) MIN. NICKEL OVERALL
GS2 = .000015/(0.00038) MIN. SELECT GOLD OVER .000100/(0.00254) MIN. SELECT MATTE TIN OVER .000050/(0.00127) MIN. NICKEL OVERALL
GS3 = .000050/(0.00127) MIN. SELECT GOLD OVER .000100/(0.00254) MIN. SELECT MATTE TIN OVER .000050/(0.00127) MIN. NICKEL OVERALL
BLANK, S, MS = .000100/(0.00254) MIN. MATTE TIN OVER .000050/(0.00127) MIN. NICKEL OVERALL
RM = .000060/(0.00152) MIN. REFLOWED MATTE TIN OVER .000050/(0.00127) MIN. NICKEL OVERALL
 - PRODUCT SPECIFICATION:** PS-5566-001
 - PACKAGING:**
"BLANK" = BULK PACKED PER PK-5569-002 (NOT RECOMMENDED)
"T" = TRAY PACKED PER PK-5569-003 (RECOMMENDED FOR NEW APPLICATIONS)
 - PART MATES WITH MINI-FIT JR. RECEPTACLE SERIES 5567.**
 - MOUNTING OPTIONS:**
1 = SCREW MOUNT (SEE SD-5569-NA* SERIES DRAWING)
2 = PEG MOUNT
 - DISCOLORATION IN THE BANDOLIER CARRIER AREA OF THE PIN IS INHERENT TO THE PLATING PROCESS AND IS DUE TO THE MASKING EFFECT OF THE CARRIER. THIS DISCOLORATION IS IN A NON-FUNCTIONAL AREA OF THE PIN AND WILL NOT AFFECT THE PERFORMANCE OF THE HEADER ASSEMBLY.**
 - PART CONFORMS TO CLASS 'B' REQUIREMENTS OF COSMETIC SPECIFICATION PS-45499-002.**
 - CONNECTORS ARE NOT TO BE MATED AND UNMATED WHILE CIRCUITS ARE LIVE.**
 - PARTS ARE NOT DESIGNED FOR CURRENT SHARING.**
 - FORMING MARKS ON PINS ARE ACCEPTABLE.**
 - CORNER CORE-OUTS ARE OPTIONAL AND MAY OR MAY NOT BE PRESENT.**

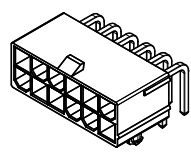


RECOMMENDED HOLE LAYOUT FOR .070(1.78) MAX. THICK P.C. BOARD VIEWED FROM COMPONENT SIDE

RECOMMENDED HOLE LAYOUT FOR .070(1.78) MAX. THICK P.C. BOARD VIEWED FROM COMPONENT SIDE

RECOMMENDED HOLE LAYOUT FOR .070(1.78) MAX. THICK P.C. BOARD VIEWED FROM COMPONENT SIDE

DIMENSIONS IN THIS VIEW ARE TYPICAL FOR CIRCUIT SIZES 6 THRU 24



| QUALITY SYMBOLS | GENERAL TOLERANCES (UNLESS SPECIFIED) <table border="1"> <tr> <th></th> <th>mm</th> <th>INCH</th> </tr> <tr> <td>4 PLACES</td> <td>±.005</td> <td>±.002</td> </tr> <tr> <td>3 PLACES</td> <td>±.010</td> <td>±.005</td> </tr> <tr> <td>2 PLACES</td> <td>±.025</td> <td>±.010</td> </tr> <tr> <td>1 PLACE</td> <td>±.038</td> <td>±.015</td> </tr> <tr> <td>0 PLACE</td> <td>±.076</td> <td>±.030</td> </tr> </table> | | mm | INCH | 4 PLACES | ±.005 | ±.002 | 3 PLACES | ±.010 | ±.005 | 2 PLACES | ±.025 | ±.010 | 1 PLACE | ±.038 | ±.015 | 0 PLACE | ±.076 | ±.030 | DIMENSION STYLE IN/MM DRAWN BY: R J F CHECKED BY: G T APPROVED BY: F S M I T H DATE: 1988/02/16 DATE: 1988/02/16 DATE: 2010/12/06 | SCALE 4:1 DESIGN UNITS METRIC THIRD ANGLE PROJECTION | 2-4 GENERAL DOCS. M7 1 MEO M9 SHT. SOFTWARE REV. |
|--|---|-------|----|------|----------|-------|-------|----------|-------|-------|----------|-------|-------|---------|-------|-------|---------|-------|-------|---|---|--|
| | | | mm | INCH | | | | | | | | | | | | | | | | | | |
| 4 PLACES | ±.005 | ±.002 | | | | | | | | | | | | | | | | | | | | |
| 3 PLACES | ±.010 | ±.005 | | | | | | | | | | | | | | | | | | | | |
| 2 PLACES | ±.025 | ±.010 | | | | | | | | | | | | | | | | | | | | |
| 1 PLACE | ±.038 | ±.015 | | | | | | | | | | | | | | | | | | | | |
| 0 PLACE | ±.076 | ±.030 | | | | | | | | | | | | | | | | | | | | |
| CORRECT 3.40 DIM. EC NO: UCP2015-4546 DRAWING: 2015/04/30 CHKD: BELL APPR: SMITH 2015/05/06 | MATERIAL NO. SEE CHART DOCUMENT NO. SDA-5569-NA2*-* SHEET NO. 1 OF 1 | | | | | | | | | | | | | | | | | | | | | |

ANGULAR ±1/2°
 DRAFT WHERE APPLICABLE MUST REMAIN WITHIN DIMENSIONS
 THIS DRAWING CONTAINS INFORMATION THAT IS PROPRIETARY TO MOLEX INCORPORATED AND SHOULD NOT BE USED WITHOUT WRITTEN PERMISSION



BULK PACKAGED PER PK-5569-002

THESE PART NUMBERS ARE NOT RECOMMENDED, FOR NEW APPLICATIONS USE THE TRAY PACKED PART NUMBERS

| PART NUMBER | ENG. NUMBER | CKT. SIZE | PLATING (NOTE 2) | HSG MAT'L | PART NUMBER | ENG. NUMBER | CKT. SIZE | PLATING (NOTE 2) | HSG MAT'L |
|-------------|-------------|-----------|---|-----------|-------------|---------------|-----------|---|-----------|
| 39-30-1020 | 5569-02A2 | 2 | MATTE TIN OVER NICKEL SEE NOTE 2 OPTION "BLANK" | 94V-2 | 39-30-0020 | 5569-02A2-210 | 2 | MATTE TIN OVER NICKEL SEE NOTE 2 OPTION "BLANK" | 94V-0 |
| 39-30-1040 | 5569-04A2 | 4 | | | 39-30-0040 | 5569-04A2-210 | 4 | | |
| 39-30-1060 | 5569-06A2 | 6 | | | 39-30-0060 | 5569-06A2-210 | 6 | | |
| 39-30-1080 | 5569-08A2 | 8 | | | 39-30-0080 | 5569-08A2-210 | 8 | | |
| 39-30-1100 | 5569-10A2 | 10 | | | 39-30-0100 | 5569-10A2-210 | 10 | | |
| 39-30-1120 | 5569-12A2 | 12 | | | 39-30-0120 | 5569-12A2-210 | 12 | | |
| 39-30-1140 | 5569-14A2 | 14 | | | 39-30-0140 | 5569-14A2-210 | 14 | | |
| 39-30-1160 | 5569-16A2 | 16 | | | 39-30-0160 | 5569-16A2-210 | 16 | | |
| 39-30-1180 | 5569-18A2 | 18 | | | 39-30-0180 | 5569-18A2-210 | 18 | | |
| 39-30-1200 | 5569-20A2 | 20 | | | 39-30-0200 | 5569-20A2-210 | 20 | | |
| 39-30-1220 | 5569-22A2 | 22 | | | 39-30-0220 | 5569-22A2-210 | 22 | | |
| 39-30-1240 | 5569-24A2 | 24 | | | 39-30-0240 | 5569-24A2-210 | 24 | | |

| | | | | | | | | | |
|--------------|------------|----|---|-------|------------|----------------|----|---|-------|
| 39-30-1021 | 5569-02A2G | 2 | 30 µ" SELECT GOLD SEE NOTE 2 OPTION "G" | 94V-2 | 39-30-1022 | 5569-02A2G-210 | 2 | 30 µ" SELECT GOLD SEE NOTE 2 OPTION "G" | 94V-0 |
| 39-30-1041 | 5569-04A2G | 4 | | | 39-30-1042 | 5569-04A2G-210 | 4 | | |
| 39-30-1061 | 5569-06A2G | 6 | | | 39-30-1062 | 5569-06A2G-210 | 6 | | |
| 39-30-1081 | 5569-08A2G | 8 | | | 39-30-1082 | 5569-08A2G-210 | 8 | | |
| 39-30-1101 | 5569-10A2G | 10 | | | 39-30-1102 | 5569-10A2G-210 | 10 | | |
| 39-30-1121 | 5569-12A2G | 12 | | | 39-30-1122 | 5569-12A2G-210 | 12 | | |
| 39-30-1141 | 5569-14A2G | 14 | | | 39-30-1142 | 5569-14A2G-210 | 14 | | |
| 39-30-1161 | 5569-16A2G | 16 | | | 39-30-1162 | 5569-16A2G-210 | 16 | | |
| 39-30-1181 | 5569-18A2G | 18 | | | 39-30-1182 | 5569-18A2G-210 | 18 | | |
| 39-30-1201 | 5569-20A2G | 20 | | | 39-30-1202 | 5569-20A2G-210 | 20 | | |
| NOT ASSIGNED | 5569-22A2G | 22 | | | 39-30-1222 | 5569-22A2G-210 | 22 | | |
| 39-30-1241 | 5569-24A2G | 24 | | | 39-30-1242 | 5569-24A2G-210 | 24 | | |

| | | | | | | | | | |
|--|--|--|--|--|--|--|--|--|--|
| | | | | | | | | | |
| | | | | | | | | | |
| | | | | | | | | | |
| | | | | | | | | | |
| | | | | | | | | | |
| | | | | | | | | | |
| | | | | | | | | | |
| | | | | | | | | | |
| | | | | | | | | | |
| | | | | | | | | | |
| | | | | | | | | | |

| | | | | | | | | | |
|--|--|--|--|--|--|--|--|--|--|
| | | | | | | | | | |
| | | | | | | | | | |
| | | | | | | | | | |
| | | | | | | | | | |
| | | | | | | | | | |
| | | | | | | | | | |
| | | | | | | | | | |
| | | | | | | | | | |
| | | | | | | | | | |
| | | | | | | | | | |
| | | | | | | | | | |

| | | | |
|---|--|--|--------------------------------------|
| <u>REVISION:</u> M7 | <u>ECR/ECN INFORMATION:</u> EC No: UCP2018-0918 DATE: 2014/08/29 | <u>TITLE:</u> MINI-FIT JR.® RIGHT ANGLE HEADER ASSEMBLIES WITH MOUNTING PEGS | <u>SHEET No.</u> - 2 - |
| <u>DOCUMENT NUMBER:</u> SDA-5569-NA2*-* | <u>Drawn By:</u> JDFOX | <u>Checked By:</u> JBELL | <u>Approved By:</u> FSMITH |
| Filename: SPOMASTER.DOC | Revision: 1 | Location: Workmanager General Docs Class. | Date: 4-15-2002 |

| TRAY PACKAGED PER PK-5569-003 | | | | | | | | | |
|---|--|--|---|---|-------------|--------------------------------------|-----------------|---|----------------|
| PART NUMBER | ENG. NUMBER | CKT. SIZE | PLATING (NOTE 2) | HSG MATL | PART NUMBER | ENG. NUMBER | CKT. SIZE | PLATING (NOTE 2) | HSG MATL |
| 26-01-3127 | 5569-02A2GS2-210-T | 2 | 15 μ" SELECT GOLD SEE NOTE 2 OPTION "GS2" | 94V-0 | 46999-0538 | 5569-02A2GS2-400-T | 2 | 15 μ" SELECT GOLD SEE NOTE 2 OPTION "GS2" | BLACK 94V-0 |
| 26-01-3128 | 5569-04A2GS2-210-T | 4 | | | 46999-0539 | 5569-04A2GS2-400-T | 4 | | |
| NOT TOOLED | 5569-06A2GS2-210-T | 6 | | | 46999-0540 | 5569-06A2GS2-400-T | 6 | | |
| NOT TOOLED | 5569-08A2GS2-210-T | 8 | | | 46999-0541 | 5569-08A2GS2-400-T | 8 | | |
| NOT TOOLED | 5569-10A2GS2-210-T | 10 | | | 46999-0542 | 5569-10A2GS2-400-T | 10 | | |
| NOT TOOLED | 5569-12A2GS2-210-T | 12 | | | 46999-0543 | 5569-12A2GS2-400-T | 12 | | |
| NOT TOOLED | 5569-14A2GS2-210-T | 14 | | | 46999-0544 | 5569-14A2GS2-400-T | 14 | | |
| NOT TOOLED | 5569-16A2GS2-210-T | 16 | | | 46999-0545 | 5569-16A2GS2-400-T | 16 | | |
| NOT TOOLED | 5569-18A2GS2-210-T | 18 | | | 46999-0546 | 5569-18A2GS2-400-T | 18 | | |
| NOT TOOLED | 5569-20A2GS2-210-T | 20 | | | 46999-0547 | 5569-20A2GS2-400-T | 20 | | |
| NOT TOOLED | 5569-22A2GS2-210-T | 22 | | | 46999-0548 | 5569-22A2GS2-400-T | 22 | | |
| NOT TOOLED | 5569-24A2GS2-210-T | 24 | | | 46999-0549 | 5569-24A2GS2-400-T | 24 | | |
| 26-01-3141 | 5569-02A2GS3-T | 2 | 50 μ" SELECT GOLD SEE NOTE 2 OPTION "GS3" | 94V-2 | | | 2 | | |
| 26-01-3142 | 5569-04A2GS3-T | 4 | | | | | 4 | | |
| 26-01-3143 | 5569-06A2GS3-T | 6 | | | | | 6 | | |
| 26-01-3144 | 5569-08A2GS3-T | 8 | | | | | 8 | | |
| NOT TOOLED | 5569-10A2GS3-T | 10 | | | | | 10 | | |
| NOT TOOLED | 5569-12A2GS3-T | 12 | | | | | 12 | | |
| NOT TOOLED | 5569-14A2GS3-T | 14 | | | | | 14 | | |
| 26-01-3148 | 5569-16A2GS3-T | 16 | | | | | 16 | | |
| NOT TOOLED | 5569-18A2GS3-T | 18 | | | | | 18 | | |
| NOT TOOLED | 5569-20A2GS3-T | 20 | | | | | 20 | | |
| NOT TOOLED | 5569-22A2GS3-T | 22 | | | | | 22 | | |
| NOT TOOLED | 5569-24A2GS3-T | 24 | | | | | 24 | | |
| 46999-0001 | 5569-02A2S-BL-T | 2 | MATTE TIN OVER NICKEL SEE NOTE 2 OPTION "S" | BLACK 94V-2 | | | 2 | | |
| 46999-0002 | 5569-04A2S-BL-T | 4 | | | | | 4 | | |
| 46999-0003 | 5569-06A2S-BL-T | 6 | | | | | 6 | | |
| 46999-0004 | 5569-08A2S-BL-T | 8 | | | | | 8 | | |
| 46999-0005 | 5569-10A2S-BL-T | 10 | | | | | 10 | | |
| 46999-0006 | 5569-12A2S-BL-T | 12 | | | | | 12 | | |
| 46999-0007 | 5569-14A2S-BL-T | 14 | | | | | 14 | | |
| 46999-0008 | 5569-16A2S-BL-T | 16 | | | | | 16 | | |
| 46999-0009 | 5569-18A2S-BL-T | 18 | | | | | 18 | | |
| 46999-0010 | 5569-20A2S-BL-T | 20 | | | | | 20 | | |
| 46999-0011 | 5569-22A2S-BL-T | 22 | | | | | 22 | | |
| 46999-0012 | 5569-24A2S-BL-T | 24 | | | | | 24 | | |
| 46999-0013 | 5569-02A2S-400-T | 2 | MATTE TIN OVER NICKEL SEE NOTE 2 OPTION "S" | BLACK 94V-0 | 46999-0515 | 5569-02A2G-400-T | 2 | 30 μ" SELECT GOLD SEE NOTE 2 OPTION "G" | BLACK 94V-0 |
| 46999-0014 | 5569-04A2S-400-T | 4 | | | 46999-0516 | 5569-04A2G-400-T | 4 | | |
| 46999-0015 | 5569-06A2S-400-T | 6 | | | 46999-0517 | 5569-06A2G-400-T | 6 | | |
| 46999-0016 | 5569-08A2S-400-T | 8 | | | 46999-0518 | 5569-08A2G-400-T | 8 | | |
| 46999-0017 | 5569-10A2S-400-T | 10 | | | 46999-0519 | 5569-10A2G-400-T | 10 | | |
| 46999-0018 | 5569-12A2S-400-T | 12 | | | 46999-0520 | 5569-12A2G-400-T | 12 | | |
| 46999-0019 | 5569-14A2S-400-T | 14 | | | 46999-0521 | 5569-14A2G-400-T | 14 | | |
| 46999-0020 | 5569-16A2S-400-T | 16 | | | 46999-0522 | 5569-16A2G-400-T | 16 | | |
| 46999-0021 | 5569-18A2S-400-T | 18 | | | 46999-0523 | 5569-18A2G-400-T | 18 | | |
| 46999-0022 | 5569-20A2S-400-T | 20 | | | 46999-0524 | 5569-20A2G-400-T | 20 | | |
| 46999-0023 | 5569-22A2S-400-T | 22 | | | 46999-0525 | 5569-22A2G-400-T | 22 | | |
| 46999-0024 | 5569-24A2S-400-T | 24 | | | 46999-0526 | 5569-24A2G-400-T | 24 | | |
| REVISION: M7 | ECR/ECN INFORMATION: EC No: UCP2018-0918 DATE: 2014/08/29 | TITLE: MINI-FIT JR.® RIGHT ANGLE HEADER ASSEMBLIES WITH MOUNTING PEGS | | | | | | SHEET No. - 3 - | |
| DOCUMENT NUMBER: SDA-5569-NA2*-* | | Drawn By: JDFOX | | Checked By: JBELL | | Approved By: FSMITH | | | |
| Filename: SPOMASTER.DOC | | Revision: 1 | | Location: Workmanager General Docs Class. | | | Date: 4-15-2002 | | |

| TRAY PACKAGED PER PK-5569-003 | | | | | | | | | | |
|-------------------------------|-------------------|-----------|---|-------------------|-------------|-------------------|-----------|---|-------------|--|
| PART NUMBER | ENG. NUMBER | CKT. SIZE | PLATING (NOTE 2) | HSG MAT'L | PART NUMBER | ENG. NUMBER | CKT. SIZE | PLATING (NOTE 2) | HSG MAT'L | |
| 50-36-1757 | 5569-02A2S-T | 2 | MATTE TIN OVER NICKEL SEE NOTE 2 OPTION "S" | 94V-2 | 50-36-1758 | 5569-02A2S-210-T | 2 | MATTE TIN OVER NICKEL SEE NOTE 2 OPTION "S" | 94V-0 | |
| 50-36-1767 | 5569-04A2S-T | 4 | | | 50-36-1768 | 5569-04A2S-210-T | 4 | | | |
| 50-36-1777 | 5569-06A2S-T | 6 | | | 50-36-1778 | 5569-06A2S-210-T | 6 | | | |
| 50-36-1787 | 5569-08A2S-T | 8 | | | 50-36-1788 | 5569-08A2S-210-T | 8 | | | |
| 50-36-1797 | 5569-10A2S-T | 10 | | | 50-36-1798 | 5569-10A2S-210-T | 10 | | | |
| 50-36-1807 | 5569-12A2S-T | 12 | | | 50-36-1808 | 5569-12A2S-210-T | 12 | | | |
| 50-36-1817 | 5569-14A2S-T | 14 | | | 50-36-1818 | 5569-14A2S-210-T | 14 | | | |
| 50-36-1827 | 5569-16A2S-T | 16 | | | 50-36-1828 | 5569-16A2S-210-T | 16 | | | |
| 50-36-1837 | 5569-18A2S-T | 18 | | | 50-36-1838 | 5569-18A2S-210-T | 18 | | | |
| 50-36-1847 | 5569-20A2S-T | 20 | | | 50-36-1848 | 5569-20A2S-210-T | 20 | | | |
| 50-36-1857 | 5569-22A2S-T | 22 | | | 50-36-1858 | 5569-22A2S-210-T | 22 | | | |
| 50-36-1867 | 5569-24A2S-T | 24 | 50-36-1868 | 5569-24A2S-210-T | 24 | | | | | |
| 50-36-1755 | 5569-02A2GS-T | 2 | 30 μ" SELECT GOLD SEE NOTE 2 OPTION "GS" | 94V-2 | 50-36-1756 | 5569-02A2GS-210-T | 2 | 30 μ" SELECT GOLD SEE NOTE 2 OPTION "GS" | 94V-0 | |
| 50-36-1765 | 5569-04A2GS-T | 4 | | | 50-36-1766 | 5569-04A2GS-210-T | 4 | | | |
| 50-36-1775 | 5569-06A2GS-T | 6 | | | 50-36-1776 | 5569-06A2GS-210-T | 6 | | | |
| 50-36-1785 | 5569-08A2GS-T | 8 | | | 50-36-1786 | 5569-08A2GS-210-T | 8 | | | |
| 50-36-1795 | 5569-10A2GS-T | 10 | | | 50-36-1796 | 5569-10A2GS-210-T | 10 | | | |
| 50-36-1805 | 5569-12A2GS-T | 12 | | | 50-36-1806 | 5569-12A2GS-210-T | 12 | | | |
| 50-36-1815 | 5569-14A2GS-T | 14 | | | 50-36-1816 | 5569-14A2GS-210-T | 14 | | | |
| 50-36-1825 | 5569-16A2GS-T | 16 | | | 50-36-1826 | 5569-16A2GS-210-T | 16 | | | |
| 50-36-1835 | 5569-18A2GS-T | 18 | | | 50-36-1836 | 5569-18A2GS-210-T | 18 | | | |
| 50-36-1845 | 5569-20A2GS-T | 20 | | | 50-36-1846 | 5569-20A2GS-210-T | 20 | | | |
| 39-30-1221 | 5569-22A2GS-T | 22 | | | 50-36-1856 | 5569-22A2GS-210-T | 22 | | | |
| 50-36-1865 | 5569-24A2GS-T | 24 | 50-36-1866 | 5569-24A2GS-210-T | 24 | | | | | |
| 26-01-3177 | 5569-02AGS3-210-T | 2 | 50 μ" SELECT GOLD SEE NOTE 2 OPTION "GS3" | 94V-0 | 26-01-3101 | 5569-02A2GS-BL-T | 2 | 30 μ" SELECT GOLD SEE NOTE 2 OPTION "GS" | BLACK 94V-2 | |
| 26-01-3178 | 5569-04AGS3-210-T | 4 | | | NOT TOOLED | 5569-04A2GS-BL-T | 4 | | | |
| | | 6 | | | NOT TOOLED | 5569-06A2GS-BL-T | 6 | | | |
| | | 8 | | | NOT TOOLED | 5569-08A2GS-BL-T | 8 | | | |
| 26-01-3094 | 5569-10AGS3-210-T | 10 | | | NOT TOOLED | 5569-10A2GS-BL-T | 10 | | | |
| | | 12 | | | NOT TOOLED | 5569-12A2GS-BL-T | 12 | | | |
| | | 14 | | | NOT TOOLED | 5569-14A2GS-BL-T | 14 | | | |
| | | 16 | | | 26-01-3108 | 5569-16A2GS-BL-T | 16 | | | |
| | | 18 | | | NOT TOOLED | 5569-18A2GS-BL-T | 18 | | | |
| | | 20 | | | NOT TOOLED | 5569-20A2GS-BL-T | 20 | | | |
| | | 22 | | | NOT TOOLED | 5569-22A2GS-BL-T | 22 | | | |
| | | 24 | NOT TOOLED | 5569-24A2GS-BL-T | 24 | | | | | |
| 26-01-3114 | 5569-02A2GS2-T | 2 | 15 μ" SELECT GOLD SEE NOTE 2 OPTION "GS2" | 94V-2 | | | | | | |
| 26-01-3115 | 5569-04A2GS2-T | 4 | | | | | | | | |
| 26-01-3116 | 5569-06A2GS2-T | 6 | | | | | | | | |
| NOT TOOLED | 5569-08A2GS2-T | 8 | | | | | | | | |
| NOT TOOLED | 5569-10A2GS2-T | 10 | | | | | | | | |
| 26-01-3119 | 5569-12A2GS2-T | 12 | | | | | | | | |
| NOT TOOLED | 5569-14A2GS2-T | 14 | | | | | | | | |
| NOT TOOLED | 5569-16A2GS2-T | 16 | | | | | | | | |
| NOT TOOLED | 5569-18A2GS2-T | 18 | | | | | | | | |
| NOT TOOLED | 5569-20A2GS2-T | 20 | | | | | | | | |
| NOT TOOLED | 5569-22A2GS2-T | 22 | | | | | | | | |
| 26-01-3126 | 5569-24A2GS2-T | 24 | | | | | | | | |

| | | | |
|---|--|--|----------------------------|
| REVISION: M7 | ECR/ECN INFORMATION: EC No: UCP2018-0918 DATE: 2014/08/29 | TITLE: MINI-FIT JR.® RIGHT ANGLE HEADER ASSEMBLIES WITH MOUNTING PEGS | SHEET No. - 4 - |
| DOCUMENT NUMBER: SDA-5569-NA2*-* | Drawn By: JDFOX | Checked By: JBELL | Approved By: FSMITH |