

Excellent Integrated System Limited

Stocking Distributor

Click to view price, real time Inventory, Delivery & Lifecycle Information:

[Molex Connector Corporation](#)
[0050650202](#)

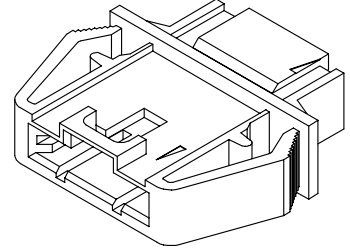
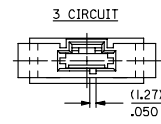
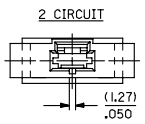
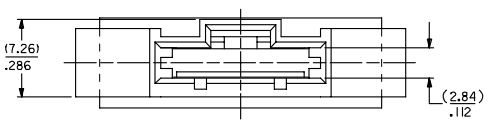
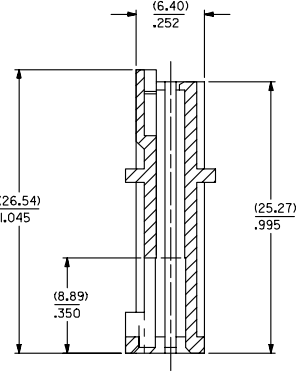
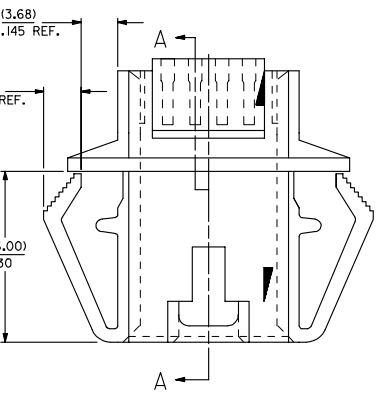
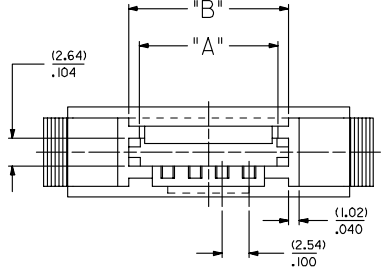
For any questions, you can email us directly:

sales@integrated-circuit.com

NOTES :

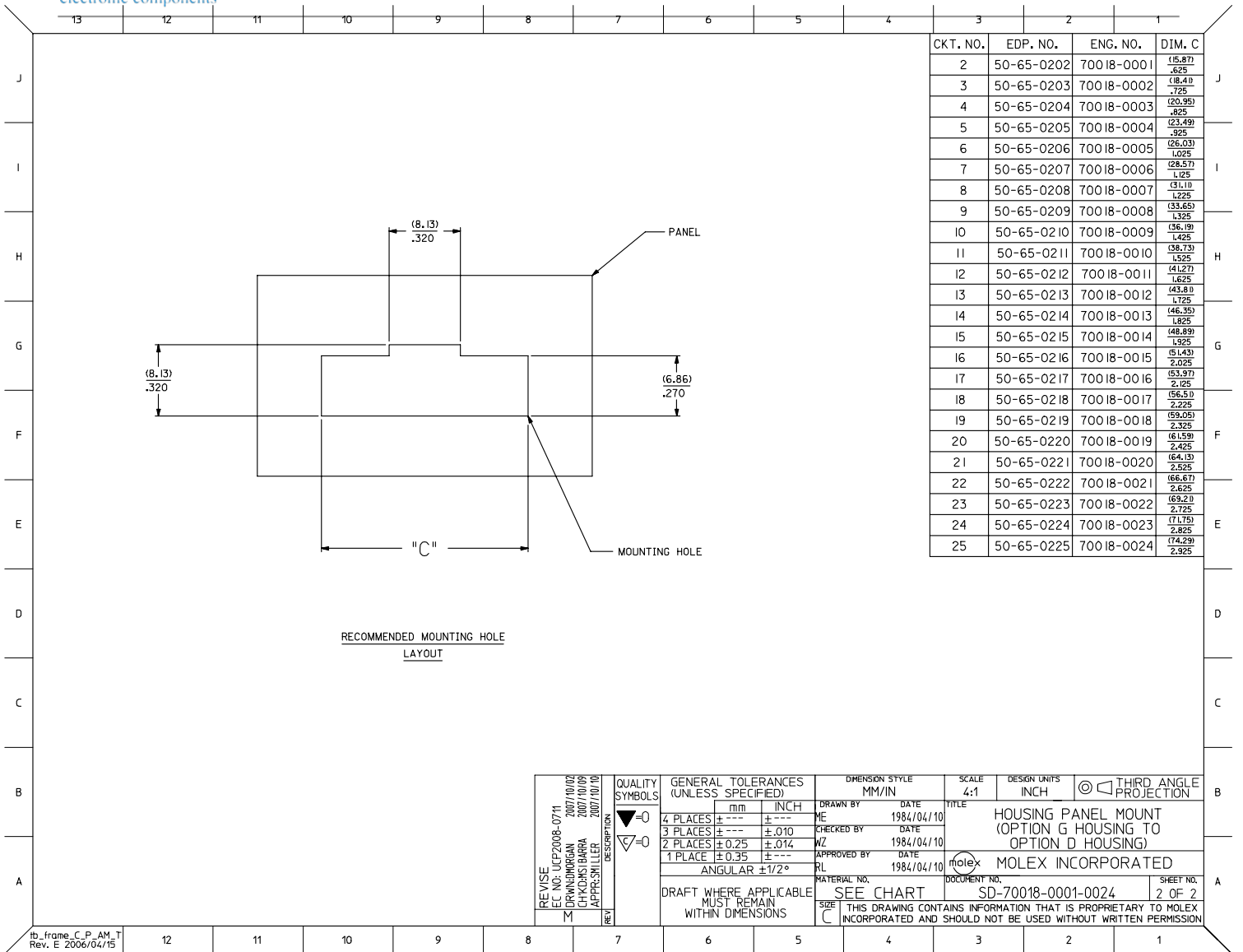
- 1) MATERIAL : POLYESTER, 94V-0
COLOR : BLACK
- 2) SEE CHART FOR CIRCUIT SIZES .
- 3) HOUSING TO BE USED WITH 70400 SERIES HOUSING (OPTION 'G' & OPTION 'D')
- 4) PANEL THICKNESS (0.81) / .032 - (2.36) / .093
- 5) SEE SHEET 2 FOR MOUNTING HOLE DIMENSIONS .
- 6) PACKAGE PER PK-70018-100.

| CKT. NO. | EDP. NO. | ENG. NO. | DIM. A | DIM. B |
|----------|------------|------------|------------------|------------------|
| 2 | 50-65-0202 | 70018-0001 | (5.21) .205 | (1.37) .290 |
| 3 | 50-65-0203 | 70018-0002 | (7.75) .305 | (1.93) .390 |
| 4 | 50-65-0204 | 70018-0003 | (10.29) .405 | (2.45) .490 |
| 5 | 50-65-0205 | 70018-0004 | (12.83) .505 | (4.99) .590 |
| 6 | 50-65-0206 | 70018-0005 | (15.37) .605 | (7.53) .690 |
| 7 | 50-65-0207 | 70018-0006 | (17.91) .705 | (10.07) .790 |
| 8 | 50-65-0208 | 70018-0007 | (20.45) .805 | (12.61) .890 |
| 9 | 50-65-0209 | 70018-0008 | (22.99) .905 | (15.15) .990 |
| 10 | 50-65-0210 | 70018-0009 | (25.53) 1.005 | (17.69) 1.090 |
| 11 | 50-65-0211 | 70018-0010 | (28.07) 1.105 | (20.23) 1.190 |
| 12 | 50-65-0212 | 70018-0011 | (30.61) 1.205 | (22.77) 1.290 |
| 13 | 50-65-0213 | 70018-0012 | (33.15) 1.305 | (25.31) 1.390 |
| 14 | 50-65-0214 | 70018-0013 | (35.69) 1.405 | (27.85) 1.490 |
| 15 | 50-65-0215 | 70018-0014 | (38.23) 1.505 | (30.39) 1.590 |
| 16 | 50-65-0216 | 70018-0015 | (40.77) 1.605 | (32.93) 1.690 |
| 17 | 50-65-0217 | 70018-0016 | (43.31) 1.705 | (35.47) 1.790 |
| 18 | 50-65-0218 | 70018-0017 | (45.85) 1.805 | (38.01) 1.890 |
| 19 | 50-65-0219 | 70018-0018 | (48.39) 1.905 | (40.55) 1.990 |
| 20 | 50-65-0220 | 70018-0019 | (50.93) 2.005 | (43.09) 2.090 |
| 21 | 50-65-0221 | 70018-0020 | (53.47) 2.105 | (45.63) 2.190 |
| 22 | 50-65-0222 | 70018-0021 | (56.01) 2.205 | (48.17) 2.290 |
| 23 | 50-65-0223 | 70018-0022 | (58.55) 2.305 | (50.71) 2.390 |
| 24 | 50-65-0224 | 70018-0023 | (61.09) 2.405 | (53.25) 2.490 |
| 25 | 50-65-0225 | 70018-0024 | (63.63) 2.505 | (55.79) 2.590 |



SECTION A-A

| | | | | | | | | | |
|---|-------------------------------|--|------------------------|--------------------------|-----------------------|---|--|------------------------------------|---------------------|
| REVISE ILC NO: UCP2008-0711 DRW: DRWINDIRGAN CHK: KIDRSI BARHA APPR: SMI LLER 2007/10/02 2007/10/09 2007/10/10 | QUALITY SYMBOLS ▽=0 ▽=0 | GENERAL TOLERANCES (UNLESS SPECIFIED) | | DIMENSION STYLE MM/IN | SCALE INCH | DESIGN UNITS INCH | THIRD ANGLE PROJECTION | | |
| | | 4 PLACES ± .010 ± .010 | 3 PLACES ± .010 ± .010 | 2 PLACES ± 0.25 ± .014 | 1 PLACE ± 0.35 ± .014 | DRAWN BY ME DATE 1984/04/10 | HOUSING PANEL MOUNT (OPTION G HOUSING TO OPTION D HOUSING) | | |
| | | ANGULAR ±1/2° | | | | CHECKED BY WZ DATE 1984/04/10 | MOLEX INCORPORATED | | |
| | | DRAFT WHERE APPLICABLE MUST REMAIN WITHIN DIMENSIONS | | | | APPROVED BY RL DATE 1984/04/10 | MATERIAL NO. SEE CHART | DOCUMENT NO. SD-70018-0001-0024 | SHEET NO. 1 OF 2 |



| | | | | | | | |
|--|-------------------------------|---|---|---|--------------|----------------------|------------------------|
| REVISE ILC NO: UCF2008-0711 2007/10/02 DRWINGMORGAN 2007/10/09 CH KHORRAMBARA APPR:SMILLER 2007/10/10 | QUALITY SYMBOLS ▽=0 ▽=0 | GENERAL TOLERANCES (UNLESS SPECIFIED) | | DIMENSION STYLE MM/IN | SCALE 4:1 | DESIGN UNITS INCH | THIRD ANGLE PROJECTION |
| | | 4 PLACES ±--- ±--- | DRAWN BY ME DATE 1984/04/10 | TITLE HOUSING PANEL MOUNT (OPTION G HOUSING TO OPTION D HOUSING) | | | |
| | | 3 PLACES ±--- ±.010 | CHECKED BY WZ DATE 1984/04/10 | MOLEX INCORPORATED | | | |
| | | 2 PLACES ±0.25 ±.014 1 PLACE ±0.35 ±--- | APPROVED BY RL DATE 1984/04/10 | MATERIAL NO. SD-70018-0001-0024 SHEET NO. 2 OF 2 | | | |
| DRAFT WHERE APPLICABLE MUST REMAIN WITHIN DIMENSIONS | | THIS DRAWING CONTAINS INFORMATION THAT IS PROPRIETARY TO MOLEX INCORPORATED AND SHOULD NOT BE USED WITHOUT WRITTEN PERMISSION | | | | | |