

## Excellent Integrated System Limited

Stocking Distributor

Click to view price, real time Inventory, Delivery & Lifecycle Information:

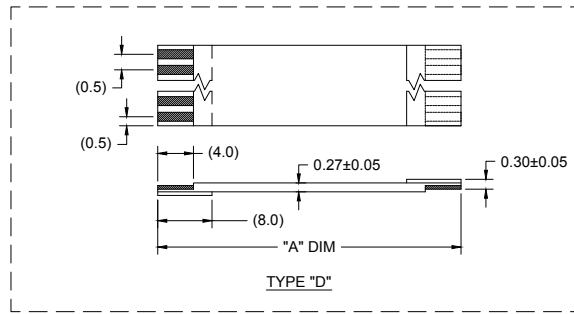
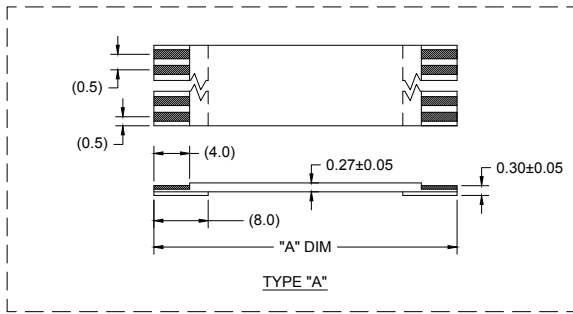
[Molex Connector Corporation](#)  
[0152660383](#)

For any questions, you can email us directly:

[sales@integrated-circuit.com](mailto:sales@integrated-circuit.com)

0.50MM CENTER FFC JUMPER CABLE (HIGH TEMPERATURE) CHART

Table with columns for 'A' DIM., STIFFENER, CKTS, and various length specifications in inches and millimeters. It lists part numbers for different configurations from 6 to 50 contacts.



NOTES: 1. NO PRINTING ON JUMPER CABLE UNLESS OTHERWISE SPECIFIED. IF PRINTING IS REQUIRED, THEN IT WOULD BE CONSIDERED A SPECIAL JUMPER CABLE.

Technical drawing metadata including: SHOW CONTINUOUS INSULATION FOR TAILS, EC NO. USW2014-0256, DRAWN: MFI, QUALITY SYMBOL, GENERAL TOLERANCES (UNLESS SPECIFIED), DIMENSION STYLE (MM), SCALE (---), DESIGN UNITS (METRIC), THIRD ANGLE PROJECTION, DRAWN BY, CHECKED BY, APPROVED BY, MATERIAL NO., SEE CHART, DOCUMENT NO. (SD-15266-001), SHEET NO. (1 OF 2), and PROPRIETARY INFORMATION.

