

## Excellent Integrated System Limited

Stocking Distributor

Click to view price, real time Inventory, Delivery & Lifecycle Information:

[Keystone Electronics](#)

[912](#)

For any questions, you can email us directly:

[sales@integrated-circuit.com](mailto:sales@integrated-circuit.com)

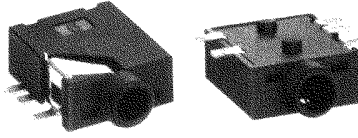


Designers' Choice

# AUDIO JACKS & "F" CONNECTORS

## SURFACE MOUNT STEREO JACKS

- Mates with 2.5mm and 3.5mm plugs
- Designed for reliable interface with audio equipment including computer speakers, headphones, sound cards, cell phones, etc.
- Models available for mono and stereo applications
- Low profile, surface mount design



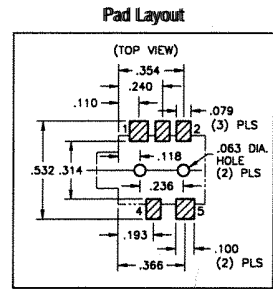
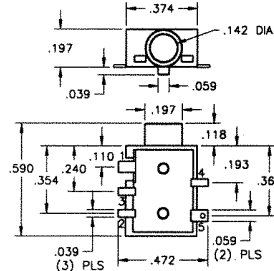
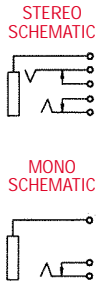
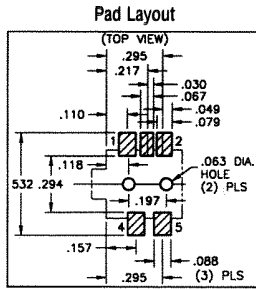
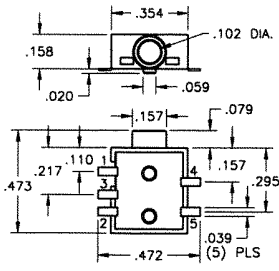
### SPECIFICATIONS

Housing: Polyamide, Rated UL 94V-0  
 Ground Terminal: .012 Brass, Gold Flash ①  
 Spring Contacts: .008 Phosphor Bronze, Gold Flash ② ⑤  
 Shunt Terminals: .012 Brass, Gold flash ③ ④

### FOR 2.5mm PLUGS

Supplied on Tape and Reel

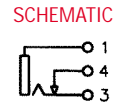
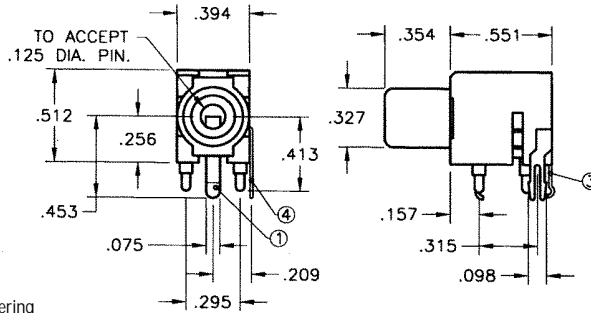
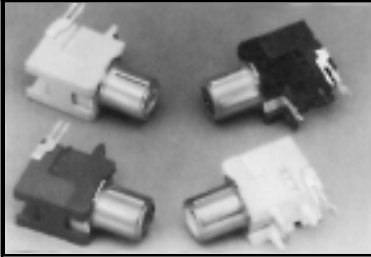
### FOR 3.5mm PLUGS



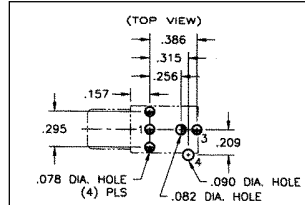
CAT. NO. 980TR (Stereo) Tape Spec's: 24mm wide; 16mm pitch  
 CAT. NO. 982TR (Mono) Reel Spec's: 15 inch reel (1,000 pieces per reel)

CAT. NO. 981TR (Stereo) Tape Spec's: 24mm wide; 16mm pitch  
 CAT. NO. 983TR (Mono) Reel Spec's: 15 inch reel (800 pieces per reel)

## COLOR KEYED — PC PHONO JACKS



Mounting Detail



- Mates with .125 diameter pins
- Features a normally closed circuit
- Various colors for circuit identification
- Snap-fit mounting for positive retention during wave soldering

CAT. NO.	COLOR
970	WHITE
971	RED
972	BLACK
973	YELLOW

### SPECIFICATIONS

Housing: PBT  
 Ground Terminal: .020 Brass, Nickel Plate ①  
 Spring Contact: .012 Phosphor Bronze, Silver Plate ③  
 Shunt Terminal: .016 Brass, Silver Plate ④

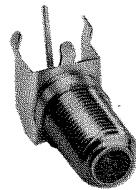
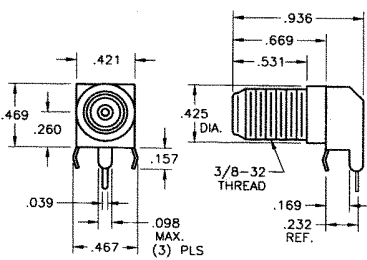
## "F" FEMALE CONNECTORS

### SNAP-FIT PC MOUNT

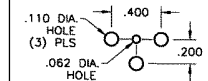
### PANEL MOUNT

- Low profile
- Snap-fit mounting for positive retention during wave soldering
- Rugged, stable construction facilitates reliable mating
- High reliability, manufactured using Nickel Plated Brass bodies and Tin Plated Phosphor Bronze contacts
- Supplied with washer and nut

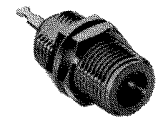
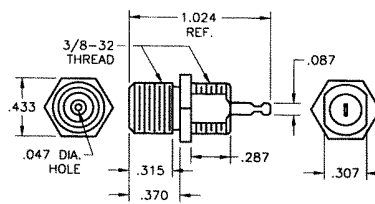
- Anti-rotation design
- Rugged construction facilitates reliable mating
- High reliability, manufactured using Nickel Plated Brass bodies and Tin Plated Phosphor Bronze contacts
- Supplied with washer and nut



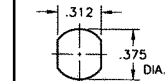
Mounting Detail



CAT. NO. 911



Mounting Detail



CAT. NO. 912