

## **Excellent Integrated System Limited**

Stocking Distributor

Click to view price, real time Inventory, Delivery & Lifecycle Information:

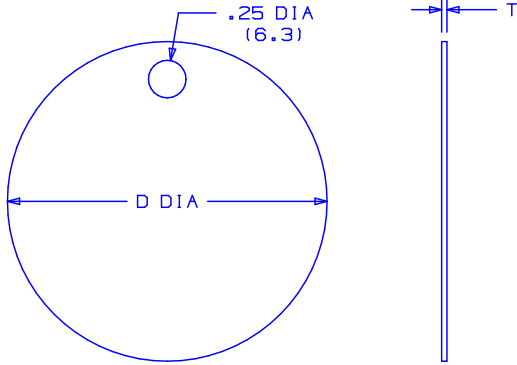
[Panduit](#)  
[MT1D-Q](#)

For any questions, you can email us directly:

[sales@integrated-circuit.com](mailto:sales@integrated-circuit.com)

THIS COPY IS PROVIDED ON A RESTRICTED BASIS AND IS NOT TO BE USED IN ANY WAY DETRIMENTAL TO THE INTERESTS OF PANDUIT CORP.


PANDUIT PART NO.	MATERIAL	PACKAGE QTY.	DIAMETER "D" ±.02(.5)	THICKNESS "T" ±.002(.05)
MT1D-Q	304 SS.	25	1.00 (25.4)	.035 (.89)
MT1D-Q316	316 SS.	25	1.00 (25.4)	.035 (.89)
MTB1D-Q	BRASS	25	1.00 (25.4)	.040 (1.02)
MT150D-Q	304 SS.	25	1.50 (38.1)	.035 (.89)
MT150D-Q316	316 SS.	25	1.50 (38.1)	.035 (.89)
MTB150D-Q	BRASS	25	1.50 (38.1)	.040 (1.02)
MT213D-Q	304 SS.	25	2.13 (54.1)	.015 (.38)
MT213D-Q316	316 SS.	25	2.13 (54.1)	.015 (.38)
MTB213D-Q	BRASS	25	2.13 (54.1)	.015 (.38)



**NOTES:**

1. DIMENSIONS IN ( ) ARE IN mm.
2. CUSTOM PERMANENT MARKING AVAILABLE. CONSULT FACTORY.

S41100\_02

02	8/05	JAMB	EJD	ADDED PART NO'S.MT1D-Q316, MT150D-Q316,& MT213D-Q316 TO TABLE	SS00018	---	---	 CORP. TINLEY PARK, ILLINOIS	
01	10/03	BRH	DPN	UPDATED METRIC VALUES IN TABLE.	11170	CCH	JJB		<b>CIRCULAR 1-HOLE STAINLESS AND BRASS METAL TAGS</b>
00	3/98	TM	NJS	DWG. RELEASED	00681	DRH	LCA		
REV	DATE	BY	CHK	DESCRIPTION	ECN #	PM	CUST	DRAWN BY TSM CHK'D NJS SCALE N/A DRAWING NO. S41100	