

Excellent Integrated System Limited

Stocking Distributor

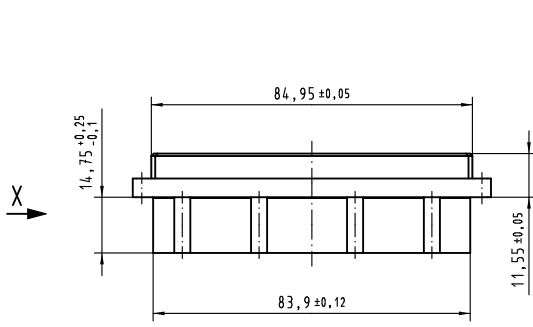
Click to view price, real time Inventory, Delivery & Lifecycle Information:

[Harting](#)

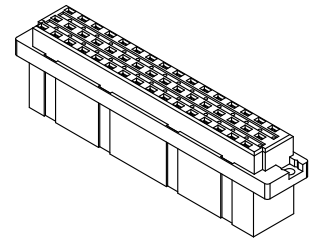
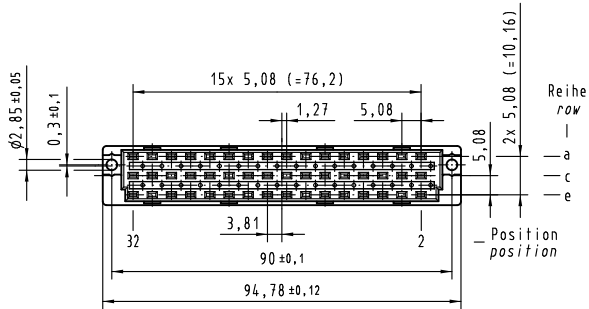
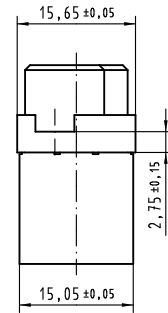
[09050483202](#)

For any questions, you can email us directly:

sales@integrated-circuit.com



X (2:1)



weitere Informationen siehe: DS 09 04 210 08 01
further information see: DS 09 04 210 08 01

All Dimensions in mm Original Size DIN A 3			Techn. Character.			Nicht tolerierte Maß/Free size tolerances ergänzend/complementary IEC 60603-2	
			Bel.	Name	Maßstab/Scale	Bauform/type E Federleiste Crimp female connector crimp	
			Detail. 25.11.05	Leh.	1:1		
			Insp. 25.11.05	kfoe.			
36501	27.03.12	Page.	Stand.			TB 09 05 048 3202 Sub.	
36429	31.08.11	AE	HARTING Electronics GmbH & Co. KG				
33174			D-32339 ESPELKAMP				
Mod.	Dat.	Name				Blatt/page	