

## Excellent Integrated System Limited

Stocking Distributor

Click to view price, real time Inventory, Delivery & Lifecycle Information:

[Panduit](#)  
[SBC6S-C](#)

For any questions, you can email us directly:

[sales@integrated-circuit.com](mailto:sales@integrated-circuit.com)

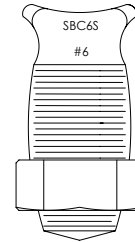
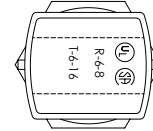
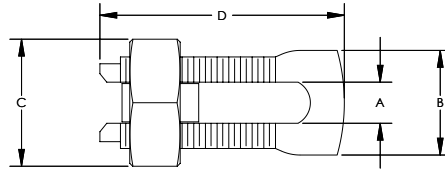
THIS COPY IS PROVIDED ON A RESTRICTED BASIS AND IS NOT TO BE USED IN ANY WAY DETRIMENTAL TO THE INTERESTS OF PANDUIT CORP.

**NOTES:**

1. HIGH STRENGTH ELECTROLYTIC COPPER HIGHLY RESISTANT TO CORROSION AND SEASON CRACKING.
2. FOR COPPER AND COPPERWELD WIRES ONLY.
3. \*CONNECTOR CAN BE USED WITH 3 WIRES, BUT IS NOT CSA APPROVED WITH 3 WIRES.
4. \*\*THE CONDUCTOR SIZES SHOWN ARE FOR EQUAL RUN AND TAP COMBINATIONS FOR BOTH SOLID AND STRANDED UNLESS OTHERWISE LISTED.
5. PARTS ARE UL LISTED TO UL467 AND UL486. PARTS ARE CSA CERTIFIED.



CATALOG NUMBER	COPPER CONDUCTOR			APPROXIMATE DIMENSIONS - INCHES				INSTALLATION TORQUE
	RANGE OF EQUAL RUN & TAP		MIN. TAP WITH ONE MAX RUN					
	MIN.	MAX.		A	B	C	D	
SBC8-C	10 STR	8 STR	16 STR	0.14	0.39	0.55	0.86	80
SBC6S-C	8 STR	6 STR	16 STR	0.16	0.41	0.62	0.95	165
*SBC6SL-C	8 STR	6 STR	16 STR	0.17	0.41	0.63	1.10	165
SBC4S-C	8 STR	6 STR	14 STR	0.21	0.45	0.69	0.98	165
*SBC4SL-C	8 STR	6 STR	14 STR	0.22	0.45	0.69	1.30	165
SBC3-C	8 STR	4 STR	14 STR	0.27	0.58	0.81	1.16	275
SBC2-C	6 STR	2 STR	14 STR	0.31	0.59	0.86	1.23	275
SBC1/0L	4 STR	1/0 STR	14 STR	0.37	0.75	0.93	1.55	385
SBC2/0-Q	2 STR	2/0 STR	14 STR	0.42	0.79	1.05	1.72	385
SBC3/0-Q	1 STR	3/0 STR	8 STR	0.53	0.95	1.24	2.07	500
SBC250-Q	1 STR	250 kcmil	8 STR	0.58	1.03	1.36	2.09	650
SBC350-1	2/0 STR	350 kcmil	1/0 STR	0.70	1.16	1.48	2.42	650
SBC500-1	300 kcmil	500 kcmil	2/0 STR	0.81	1.33	1.74	2.83	825



						TITLE		SBC SERIES - COPPER SPLIT BOLT CONNECTOR CUSTOMER DRAWING	
						ITEM REVISION NAME		N10850BM-C41512/07	<b>PANDUIT</b>
						DATASET FILE NAME		C41512/07.SLDDRW	
						UNLESS OTHERWISE SPECIFIED, DIMENSIONAL TOLERANCES ARE: IN [mm]			SEE NOTES
07	10/15	JHNU	JHNU	RGB	REVISED MARKING LOCATION ADDED NOTE TO SPECIFY PARTS ARE UL 486 AND UL467	N10850BM-C41512			
06	10/13	JHNU	JHNU	RGB	REVISED MAX RUN & TAP FOR SBC6S-C: 6 STR WAS 6 SOL	N10850BM-C41512			DRAWING NUMBER: C41512
05	3/13	JHNU	JHNU	RGB	REVISED TITLE BLOCK	N10850BM-C41512			
REV	DATE	BY	CHK	APR	DESCRIPTION	ECN		DRAWN BY: JHNU DATE: 3/06 CHK: JAC SCALE: NONE	SHEET 1 OF 1