

Excellent Integrated System Limited

Stocking Distributor

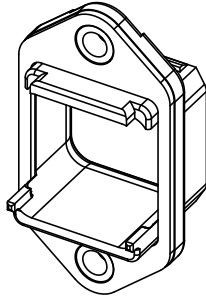
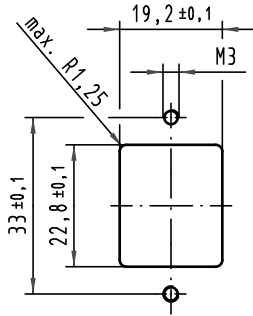
Click to view price, real time Inventory, Delivery & Lifecycle Information:

[Harting](#)
[09350020323](#)

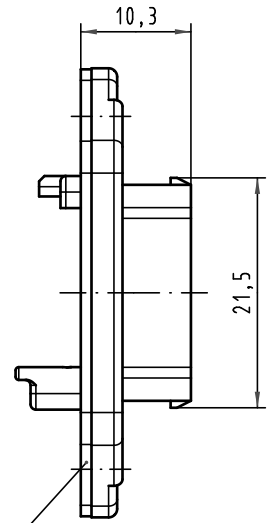
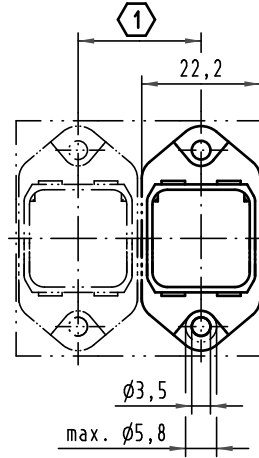
For any questions, you can email us directly:
sales@integrated-circuit.com

Alle Rechte vorbehalten/ All rights reserved

Montageausschnitt
panel cut out
1:1



1:1



Dichtung / seal

- ① min. 23 für Han PushPull Gehäuse mit SW19
- min. 27 für Han PushPull Gehäuse mit SW24
- min. 23 using Han PushPull housings with SW19
- min. 27 using Han PushPull housings with SW24

All Dimensions in mm Original Size DIN A 4			Techn. Character.			Nicht tolerierte Masse / Free size tolerances		
						Massstab / Scale 2:1 1:1	Han PushPull SCRJ / Power Anbaugehäuse Kunststoff / housing bulkhead mounting plastic	
			Detail.	10.04.06	Ho			
			Insp.		SDT			
			Stand.					
35946	10.12.09	hsv	HARTING Electronics GmbH & Co. KG				TB 09 35 002 0323	
411848			D-32339 ESPELKAMP					
Mod.	Dat.	Name				Sub.	Blatt / page	