

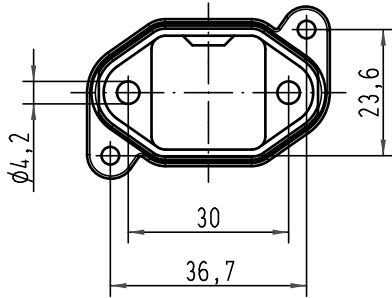
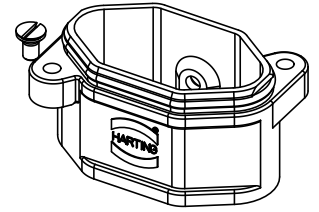
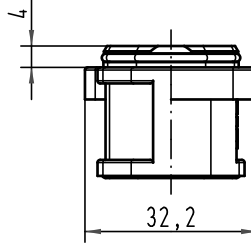
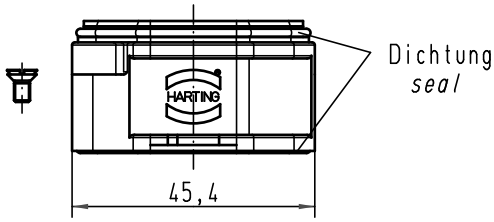
## Excellent Integrated System Limited

Stocking Distributor

Click to view price, real time Inventory, Delivery & Lifecycle Information:

[Harting](#)  
[09400030311](#)

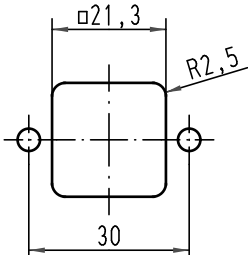
For any questions, you can email us directly:  
[sales@integrated-circuit.com](mailto:sales@integrated-circuit.com)




Lieferumfang: Gehäuse: Zinkdruckguß, schwarzverchromt  
Dichtung: 2 O-Ringe  
Einsatzbefestigungsschraube für IP 68

range of delivery: housing: zinc die-casting alloy, black chrom  
sealing: 2 O-rings  
Insertfixingscrew for IP 68

Montageausschnitt  
panel cut out



All Dimensions in mm Original Size DIN A 4			Techn. Character.			Nicht tolerierte Maß/Free size tolerances	
				Dat.	Name	Maßstab/Scale <b>1:1</b>	<b>Han 3HPR-agg-SV</b> Anbaugeschäuse für Schraubverschluss housing bulkhead mounting with screw locking system
			Detail.	10.02.09	Bor		
			Insp.		Sch		
			Stand.				
A			HARTING Electric GmbH & Co. KG				<b>TB 09 40 003 0311</b> Sub. TB 09 40 003 0311 v. 17.01.03
Mod.	Dat.	Name	D-32339 Espelkamp				